

PATTON COURIER.

PUBLISHED EVERY FRIDAY

PATTON PUBLISHING CO.

W. A. DINSMORE

THOS. A. OWENS

LOIS P. MERROW

Entered in the Post Office at Patton, Pa., as Second Class Matter.

Subscription Rate - \$2.00 Per Year

IN ADVANCE

RATE CARD

Legal Notices, 25c per line per week

Business Cards, 10c per line per week

Full page, 10c per line per week

Minimum charge, 10c per line

Advertising copy must reach this office by Tuesday evening for next insertion.

STATE NEWS

This year's production of the... High season and the largest... history of... with a... of... 60,000...

The... &... of... which... closed for... months... upon... employment...

At the - GRAND NEXT Week

Monday Night William Russell in 'Bare Knuckles' William Duncan in 'Fighting Fate'

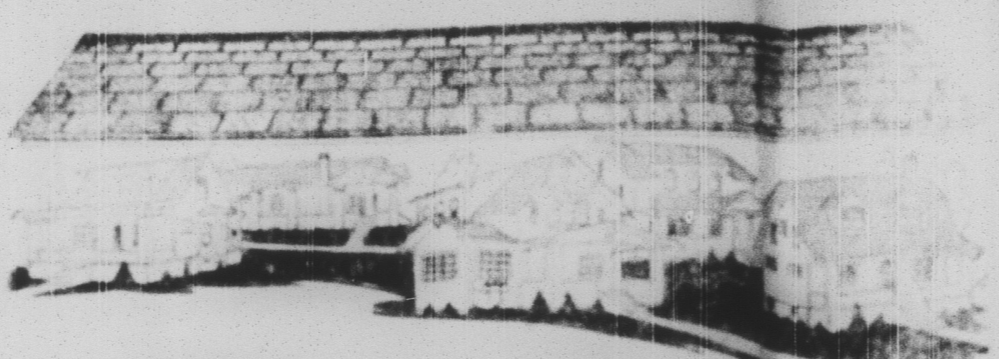
Tuesday Night Louise Glaum in 'Black is White' also an episode of 'The Son of Tarzan'

Wednesday Night Constance Binny in 'Something Different' A Realart Special Attraction.

Thursday Night 'Dangerous Moments' A Universal Special Attraction featuring Carmine Myers.

Friday Night 'A Message From Mars' Featuring Bert Lydell

Saturday Night 'DEEP PURPLE' A Realart Special.



Carey ASFALTSLATE SHINGLES

THINK of the up-keep as well as the first cost when you build your home. Use Carey Asfaltslate Shingles and your insurance rates will be less. Your home will be safer.

You will never have to paint Carey Asfaltslate Shingles. The beautiful natural red or green stone color of the slate is fadeless.

Your roof will not look shabby in a few years. These shingles cannot crack, they do not warp, wind does not get under them, ice action cannot break them.

Furthermore Carey Asfaltslate Shingles do not rot. This is because they are composed of from 70 to 80% mineral matter.

They are inexpensive and are very easy to apply. Let us figure on your requirements.

BINDER & STARRETT Hardware Patton, - - - Pa.

Advertisement for Rishell's Jewelry Store featuring a 'COMMUNITY PLATE' with various silverware items. Text includes: 'For weddings or anniversaries nothing equals it. It is useful and always appreciated. Guaranteed Fifty Years Rishell's Jewelry Store. PATTON, PA. Watches Clocks & Diamonds .25'

PENNSY BRAKEMAN KILLED

William Beamer, Tyrone, Falls from Train on Cresson & Clearfield Branch.

William Beamer, aged 41, of Tyrone, was instantly killed on Thursday afternoon, when fell from his train and rolled beneath the wheels on the Cresson & Clearfield Branch of the Tyrone Division of the Pennsylvania Railroad Company. The accident occurred at Van Scoyoc. He is survived by his widow and five children.

Several Thousand Dollars' Loss

Three frame dwelling houses in 'Whisky Row' in Spangler Borough, were destroyed by fire about 11 o'clock Friday night. The loss is estimated at about \$4,000, partly covered by insurance. The houses were owned by Italian families. There are about 20 houses in the row and some of the structures adjoining the burned houses were slightly damaged by fire and water. The Barnesboro Volunteer Fire Company responded to an alarm.

AIDEN IS GIVEN THIRTY DAYS IN THE COUNTY JAIL

EBENSBURG - Charged with possessing a revolver, Tony Zoell, 32, Johnstown, on unaturalized status, was fined \$25 and costs by Squire James I. Borkhals of this place. Information was made against Zoell by Deputy Game Warden Thomas N. Irwin, Johnstown. In default of payment Zoell was committed to the county jail for 30 days.

GRAND Patton, Pa.

Friday of this week 'The off Shore Pirate' FEAT'RING - - - Viola Dana

Saturday 'THE LAW of the YUKON'

A Realart Special Attraction with an all star cast. One of the better kind of shows. Admission 10c and 20c See this.

Now is the time to PAINT UP!

We are in a position to execute promptly and with neatness any painting you may be in need of.

GILL & CAVANAUGH PATTON, - - - PA.

STUDENT'S ANKLE BROKEN

Miss Esther Schofield daughter of Justice of the Peace and Mrs. Schofield of South Fork, suffered the fracture of an ankle when she fell from the front porch at the Schofield home. Miss Schofield is a student at the South Fork high school.

BOY STRUCK BY AUTO. IN MINERS' HOSPITAL

Wither, the eight-year-old son of Mr. and Mrs. John Weaver, of Spangler, is a patient in the Miners' Hospital, suffering of painful injuries sustained about 4 o'clock Monday afternoon, when he was struck by an automobile. He was en route from the parochial school to his home when he met with the accident. The boy received bruises about the face and one hand was injured.

Rendered Unconscious.

The Rev. Father William T. Dwyer, rector of St. Aloysius Catholic church at the Summit, sustained painful injuries Saturday night, when he was struck by an automobile, the accident occurring directly in front of church. It is claimed the automobile was traveling at high speed along the State highway.

PATIENT AT HOSPITAL

Miss Susie Stefania, of Rimigh, is a patient at the Miners' Hospital, where she is receiving medical treatment.

Lois P. Merrow Notary Public GOOD BUILDING, PATTON, PA.

PRESBYTERIAN CHURCH. Rev. French McFee, Pastor. Sunday morning sermon 10:30. Sunday School 11:45. Sunday evening sermon 7:30. Midweek Prayer Services, Wednesday evening 8 o'clock.

Be Photographed This Year on Your Birthday