

Patton Courier.

Roy Eaton Decker.

ESTABLISHED 1863.

TERMS OF SUBSCRIPTION. One copy, one year, in advance, \$1.00.

PATTON will make more improvements of a substantial nature this summer than any year during the past decade.

THAT new union station for Patton is still in statu quo. What about it, Mr. Pennsylvania Railroad Co.?

MCKINLEY is swinging around the circle at a rapid rate and is doubtless more than ever convinced of the greatness of the country of which he has the honor to be the chief executive.

THE law against Sunday fishing has not been repealed, notwithstanding the assertion of numerous exchanges.

SHORT SIGHTED PUBLISHERS. The ways of the average country newspaper publisher are past understanding.

Did it ever occur to the latter class that book concerns, bicycle manufacturers, etc., etc., will refuse to do cash advertising as long as they can secure \$1 worth of advertising for six cents in trade?

Space in his newspaper is a publisher's stock in trade just as much as sugar in the barrel is a grocer's.

Did it ever occur to the latter class that book concerns, bicycle manufacturers, etc., etc., will refuse to do cash advertising as long as they can secure \$1 worth of advertising for six cents in trade?

Space in his newspaper is a publisher's stock in trade just as much as sugar in the barrel is a grocer's.

Did it ever occur to the latter class that book concerns, bicycle manufacturers, etc., etc., will refuse to do cash advertising as long as they can secure \$1 worth of advertising for six cents in trade?

Did it ever occur to the latter class that book concerns, bicycle manufacturers, etc., etc., will refuse to do cash advertising as long as they can secure \$1 worth of advertising for six cents in trade?

though looked upon as such in some communities and by some publishers. Turn down the trade proposition, demand cash for advertising and subscriptions, pay cash for what you get, keep your credit untarnished and you will feel better, live longer, die happier and leave behind you pleasanter memories when you are dead.

ELECTED A NEW CHIEF.

Councilmen Gould and Probert voted for Frank McClure, Councilmen Winslow, Cordell and Campbell named Jax Gillicee while McCormick voted for Major W. H. H. Bell.

Chief of Police Wesley Merriman having resigned, the election of his successor was next in order. Applications were read from J. D. Mitchell, Frank Quinn, M. J. Ryan and Edward M. Tully.

M. J. Ryan was elected Chief of Police by the following vote:

For Ryan—Gould, Winslow, Campbell and Cordell.

For Mitchell—Hartshorne.

For Quinn—Probert.

For Tully—McCormick.

A discussion then ensued as to the time the officer was supposed to be on duty and a motion by Winslow seconded by McCormick that his hours for service were to be from 4 o'clock p. m. to at least 5 o'clock a. m. was carried without a dissenting vote.

A petition signed by eight property owners of North Fifth avenue asking for better fire protection in the shape of a fire plug was referred to the fire and police committee.

A letter from W. H. Denlinger inquiring the cost of tapping a sewer on Beech avenue near Fifth avenue was laid on the table for the purpose of ascertaining former prices charged.

Corbelled complained of the railroad engines running across the crossings in the borough without blowing their whistle or ringing the bell and at a much greater speed than allowed by the borough ordinance, thus endangering the lives of pedestrians, but no action was taken.

Probert called attention to numerous defective fire plugs and also stated that the fire laddies were making an effort to purchase a hook and ladder truck themselves and thought that it was no more than justice that the borough purchase 500 feet of new hose. This was incorporated into a

motion and carried unanimously. McCormick was of the opinion that the dirt in front of the school house which had been in the same position since last fall was about ready for removal, and was informed that promises had been made to have it done at an early date.

A bill of Street Commissioner Robinson was ordered sent back to be amended and the following were ordered paid:

H. S. Lingle, \$10; M. E. Cowher, \$10; Frank McClure, \$10; Patton Clay Mfg. Co., \$22.50; W. J. Donnelly, \$8.85; Geo. S. Good Electric Light Co., \$28.20; Wesley Morrison, \$41.25; Patton Water Co., \$40; W. P. Jackson, \$1; Roy Eaton Decker, \$28.85; Wm. Pyles, \$1.80; Abe Hutchinson, \$2.40; Wm. Robinson, \$4.50; Ed. Glass, \$1.92; Victor Lauer, \$1.92; H. H. Hubbard, \$1.75; A. G. Storm, \$18.80.

SCHOOL REPORT.

6; average attendance, 8; per cent of attendance, 93. Perfect in attendance: Iona Sandford, Reid Lewis, Mable Wharton.

Sophomore Grade—Number enrolled, 10; average attendance, 10; per cent of attendance, 98. Those perfect in attendance: Russel Helmhold, Alma MeJonn, Agnes Donnelly, Agnes Hunter, Rachel Sanford.

Junior—Number enrolled, 6; average attendance, 6; per cent of attendance, 95. Those perfect in attendance: Wm. Harper, Mamie Jones, Josephine Deaver.

Senior—Number enrolled, 1; average attendance, 1; per cent of attendance, 90.

B. I. MYERS, Principal.

Officers Elected.

The Beech Creek and Chest Creek railroad companies held their annual meetings in the Reading Terminal building in Philadelphia on last Friday and elected the following officers: Beech Creek—President, M. E. Oimsted; directors, Wm. K. Vanderbuilt, Samuel R. Callaway, George F. Baer, Wm. D. Kelly, Jas. Kerr and Charles Midler. Chest Creek Railroad—President, F. E. Herriman; directors, Samuel R. Callaway, Edward V. W. Rossiter, James D. Laying, Wm. D. Kelly, Jas. Kerr, A. E. Patton and W. T. Greer. Both lines are owned by the New York Central.

NOTICE.

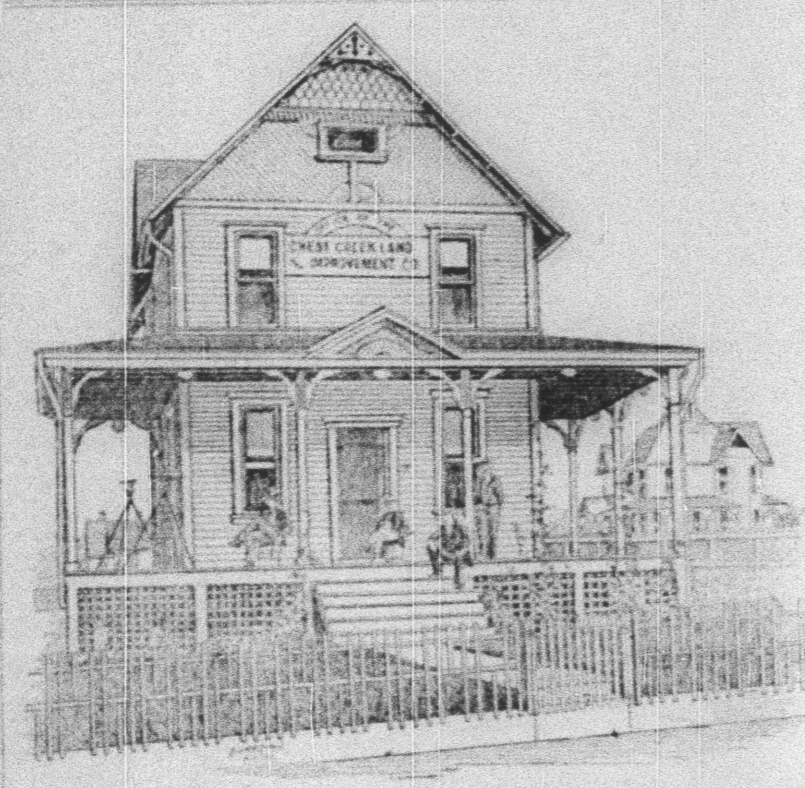
Of Meeting of Commissioners to Divide Patton Borough into Wards.

Notice is hereby given that the undersigned Commissioners appointed by the Court of Quarter Sessions of Cambria county to divide Patton Borough into wards, will meet for the purpose of performing the duties under their appointment, at the office of H. C. Verger, in the Good Building in Patton Borough, on the 15th day of May 1901, at 10 o'clock a. m., at which time and place all persons interested may be present and heard.

Dated at Patton, Penn'a, this 20th day of April, 1901.

H. C. VERGER, JAMES MELLON, MEADE R. COWHER, Commissioners.

Don't forget that the COURIER job printing department is better equipped than ever to do all kinds of commercial and book printing. Give us a trial order and you will be sure to come again. Lowest prices and best work.



Office of Chest Creek Land and Improvement Co., now being moved to the rear of the lot, where it will form part of the new parsonage of the new M. E. church.

OUR MILLINERY

Department is loaded with the latest style of hats for Ladies, Misses and Children.

Over \$100 of pattern hats to select from, so come and see our hats and you will surely get one at the price we offer, which will be stylish and up-to-date.

Over 75 boxes of flowers to select from. We have a large assortment of baby bonnets in Silk, Swiss Embroidered, Etc., and Mill Hats which we will sell at great bargains.

EVANS SISTERS.

DR. FENNER'S Family Medicines.

Cough Honey, For Coughs, Colds, Grip, or "Cold" in ANY PART of body.

Kidney and Backache CURE.

Blood and Liver Remedy and Nerve Tonic

Dyspepsia Cure

Golden Relief

St. Vitus' Dance

TO THE LADIES OF PATTON. Come here for your next hat. You are sure of getting so much more for your money than at most stores.

MRS. G. ROBISON, Nolan Bldg., Magee Ave., PATTON, PA.

Going Out of Business FREE! Our entire Stock of HARDWARE, STOVES, PAINTS, OILS, GLASS, ETC., ETC.,

Will be sold at and below cost, as we are Going Out of Business. Good values are offered in all lines.

Come Early. and get your pick of the Bargains.

The tinsmith business will be continued at the old stand.

Patton Hardware Company.

Eggs for Hatching Light Brahma's, Black Langshans, Silver Laced Wyandottes, Black Minorcas.

ED. WEAKLAND, Highland Poultry Farm, Patton, Pa.

Pan-American Exposition. The Pennsylvania Railroad Company announces the following special reduced rates to Buffalo on account of the Pan-American Exposition which opens on May 1.

Summer excursion tickets, to be sold from April 30 to September 30, inclusive, good to return until October 31, inclusive, at the rate of \$11.05 from Pittsburgh and proportionate rates from other points.

Fifteen-day excursion tickets, to be sold beginning April 30, and good returning within fifteen days, including date of sale, at the rate of \$9.20 from Pittsburgh and proportionate rates from other points.

Ten-day excursion tickets, to be sold only on Tuesdays, May 7, 14, 21, and 28, and good returning within ten days, including date of sale, at rate of \$8.00 from Pittsburgh and proportionate rates from other points.

Cheap John Store! You are invited to call and see my new line of GROCERIES, Canned Goods, Etc. At Lowest Prices. Flour and Feed A SPECIALTY.

Also best grade of Lime. Weighing done Correctly on street scales, located directly in front of store. FERTILIZERS.

I will in the future handle Fertilizers of all kinds. Farmers wishing it should leave orders early. I will not keep it in stock, but order direct from the manufacturers.

JOHN GANTZ, Proprietor.

GEO. BOONE, JUSTICE OF THE PEACE. Office on corner of Lang and Fifth Avenues. Collections promptly attended to. Properties to sell and rent.

When in need of PURE DRUGS, STATIONERY, TOBACCO & CIGARS, CONFECTIONERY, PATENT MEDICINES, Call at Huber's Drug store. PATTON, PA.

Prescriptions properly compounded. Chop, Feed and Meal. Best equipped Mill in Northern Cambria County.

BUCKWHEAT FLOUR A SPECIALTY. All kinds of Fancy Spring and Winter Wheat Flour, Whole Grain, Middlings, Bran, Oil Meal Baled Hay and Straw.

Patton Feed & Buckwheat Mills, W. J. PERRY, Proprietor.

Reuel Somerville, Attorney-at-Law, PATTON, PA. Office in the Good Building.

Parnell, Cowher & Co. FIRE, LIFE AND ACCIDENT INSURANCE. REAL ESTATE AGENTS. 1102 Main Building, Patton, Pa.—Phone No. 8.

DR. S. W. Worrell, PHYSICIAN AND SURGEON. Office in Good Building, Room No. 3. Mechanical Surgery and the Eye a Specialty. All calls will receive prompt attention.

H. A. SEITZ, Dentist! Office in Patton Building, next door to Post Office. Office Hours—8 a. m. to 12 m., and 1 p. m. to 5 p. m.

Dr. V. A. Murray, PHYSICIAN & SURGEON. Office in Adjoining block, next to Patton's, Patton, Pa. All night calls responded to promptly. Diseases of the ear, nose and throat given special attention. OFFICE HOURS: 7 to 9 a. m. and 12 to 2 p. m.

Patton Courier, Promoter of Publicity. Advertising Rates made known on application.