

**ANNOUNCEMENTS.**

**REGISTER AND RECORDER.**

**JOHN D. EVANS,**

Of Brookville borough, will be a candidate for Register and Recorder, subject to action of the Republican voters of Jefferson county at the primaries June 17, 1899.

**ED. C. BURNS,**

Of Reynoldsville borough, will be a candidate for Register and Recorder, subject to action of the Republican voters of Jefferson county at the primaries June 17, 1899.

**WILLIAM J. SHAFFER,**

Of Brookville borough, will be a candidate for Register and Recorder, subject to action of the Republican voters of Jefferson county at the primaries June 17, 1899.

**SHERIFF.**

**J. B. SYKES,**

Of Winslow township, will be a candidate for Sheriff, subject to action of the Republican voters of Jefferson county at the primaries June 17, 1899.

**J. M. CHESNUTT,**

Of Brookville borough, will be a candidate for Sheriff, subject to action of the Republican voters of Jefferson county at the primaries June 17, 1899.

**PROTHONOTARY.**

**CYRUS H. BLOOD,**

Of Brookville borough, will be a candidate for Prothonotary, subject to action of the Republican voters of Jefferson county at the primaries June 17, 1899.

**W. H. LUCAS,**

Of Corsica borough, will be a candidate for Prothonotary, subject to action of the Republican voters of Jefferson county at the primaries June 17, 1899.

**COUNTY TREASURER.**

**GIL C. REITZ,**

Of Rose township, will be a candidate for County Treasurer, subject to action of the Republican voters of Jefferson county at the primaries June 17, 1899.

**R. B. STEWART,**

Of Knox township, will be a candidate for County Treasurer, subject to action of the Republican voters of Jefferson county at the primaries June 17, 1899.

**H. G. KATZ,**

Of Eldred township, will be a candidate for County Treasurer, subject to action of the Republican voters of Jefferson county at the primaries June 17, 1899.

**LINUS M. LEWIS,**

Of Young township, will be a candidate for County Treasurer, subject to action of the Republican voters of Jefferson county at the primaries June 17, 1899.

**COUNTY COMMISSIONER.**

**W. C. MURRAY,**

Of Punxsutawney borough, will be a candidate for County Commissioner, subject to action of the Republican voters of Jefferson county at the primaries June 17, 1899.

**G. B. CARRIER,**

Of Brookville borough, will be a candidate for County Commissioner, subject to action of the Republican voters of Jefferson county at the primaries June 17, 1899.

**CHARLES D. EVANS,**

Of Washington township, will be a candidate for County Commissioner, subject to action of the Republican voters of Jefferson county at the primaries June 17, 1899.

**S. M. SHIELDS,**

Of Clover township, will be a candidate for County Commissioner, subject to action of the Republican voters of Jefferson county at the primaries June 17, 1899.

**F. M. BOWMAN,**

Of Young township, will be a candidate for County Commissioner, subject to action of the Democratic voters of Jefferson county, at the primaries, on July 1st, 1899.

**Miscellaneous.**

**W. H. STAMEY,**

**ATTORNEY-AT-LAW,**  
Office at Hotel McConnell, Reynoldsville, Pa.

**C. MITCHELL,**

**ATTORNEY-AT-LAW,**  
Office on West Main street, opposite the Commercial Hotel, Reynoldsville, Pa.

**C. Z. GORDON,**

**ATTORNEY-AT-LAW,**  
Brookville, Jefferson Co. Pa.  
Office in room formerly occupied by Gordon & Corbett, West Main Street.

**G. M. McDONALD,**

**ATTORNEY-AT-LAW,**  
Notary Public, real estate agent, Patents secured, collections made promptly. Office in Nolan block, Reynoldsville, Pa.

**SMITH M. MCCREIGHT,**

**ATTORNEY-AT-LAW,**  
Notary Public and Real Estate Agent. Collections will receive prompt attention. Office in Froehlich & Henry block, near postoffice, Reynoldsville, Pa.

**E. NEFF,**

**JUSTICE OF THE PEACE**  
And Real Estate Agent, Reynoldsville, Pa.

**DR. B. E. HOOVER,**

**REYNOLDSVILLE, PA.**  
Resident dentist. In the Froehlich & Henry block, near the postoffice, Main street. Gentleness in operating.

**DR. R. DEVERE KING,**

**DENTIST,**  
Office over Reynoldsville Hardware Co. store, Main street, Reynoldsville, Pa.

**DR. L. L. MEANS,**

**DENTIST,**  
Office in the J. Van Reed building, near corner of Main and Fifth streets.

**Hotels.**

**HOTEL MCCONNELL,**

**REYNOLDSVILLE, PA.**  
**FRANK J. BLACK, Proprietor.**  
The leading hotel of the town. Headquarters for commercial men. Steam heat, free bus, bath rooms and closets on every floor, sample rooms, billiard room, telephone connections, etc.

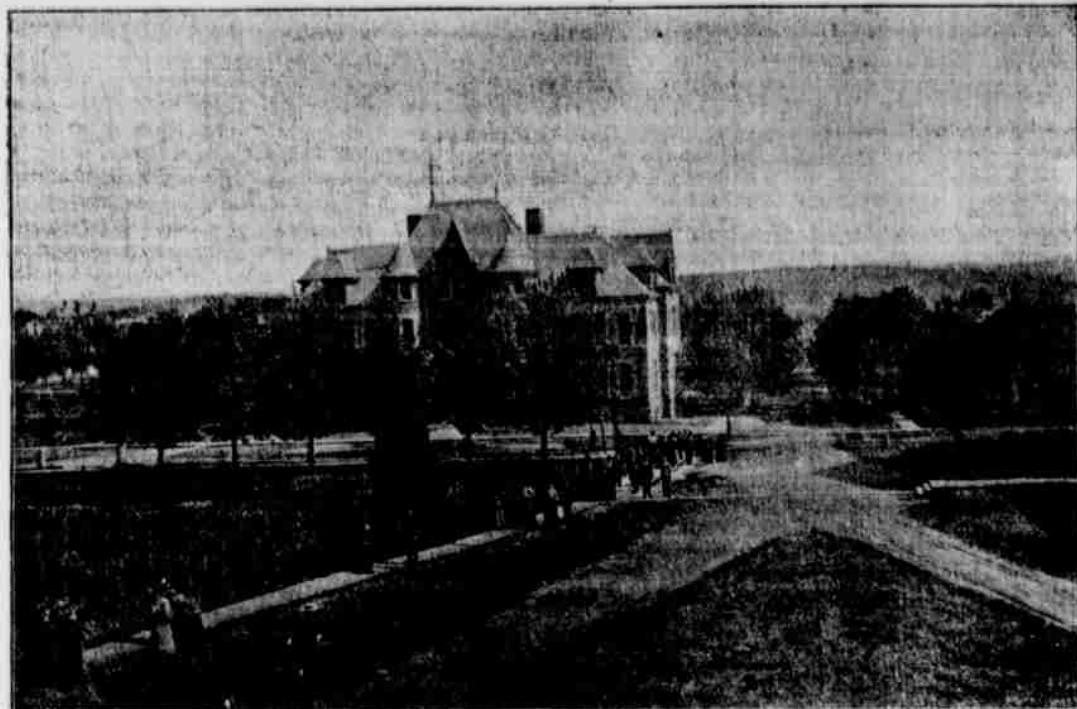
**HOTEL BELNAP,**

**REYNOLDSVILLE, PA.**  
**FRANK DIETZ, Proprietor.**  
First class in every particular. Located in the very center of the business part of town. Free bus to and from trains and commodious sample rooms for commercial travelers.

**FREE - SCHOLARSHIP**

To be Given by

**THE STAR, Reynoldsville, Pa.**



SCIENCE HALL, CLARION STATE NORMAL SCHOOL.

**TWO PRIZES.**

**First Prize: One Full Year at Clarion State Normal, Including Tuition, Boarding, &c.**  
**Second Prize: Free Trip to Niagara Falls over B., R. & P. Ry.**

Those thinking of entering THE STAR'S Free Scholarship Contest should make up their minds at once and join us as early as possible. THE STAR will pay expenses—tuition, light, heat, furnished room and board for ONE FULL YEAR at the Clarion State Normal School, Clarion, Pa., for some young lady or gentleman who receives the highest vote. This will entitle the recipient to all the privileges of that splendid institution. The Scholarship offered by THE STAR will be furnished free of cost to the successful contestant and the readers and patrons of the paper will be asked to award the prize by a popular vote.

To the Second highest contestant THE STAR will give a Free Trip to Niagara Falls over the Buffalo, Rochester & Pittsburgh Railway.

COUPONS will be printed in each issue, and when cut out and properly addressed, will be used. They can be mailed or sent to Smith M. McCreight, Esq., Secretary, who will place them in a sealed box until counted by the Judges each week.

PREMIUM COUPONS—Persons paying their back subscriptions, or in advance one year or more, can secure a Premium Coupon, at this office, which will entitle them to 36 votes or three votes for each month so paid. Any one sending or bringing in a new yearly cash subscriber will be entitled to a Premium Coupon, equal to 60 votes.

Persons desiring to enter the contest should begin as early as possible. As soon as the names are sent or handed in to THE STAR office they will be published, but the number of votes accompanying same will not be published until four weeks from this date (May 17th), when the vote each contestant has at that time will be published opposite the name and then the vote will be published as counted and returned by the Judges, from week to week.

On Monday of each week the ballot box will be opened and the Coupons counted by the Judges, and the same published.

Following is the Coupon. Cut it out of THE STAR and vote for some deserving person who would appreciate the Scholarship.

**THE STAR.**  
WEDNESDAY, MAY 31, 1899.

**Scholarship Coupon.**

NAME.....

ADDRESS.....

Write in the above lines the name and address of the person whom you wish to receive the Scholarship in the Clarion State Normal, Clarion, Pa. Not good after 30 days from date of Coupons. Forward same to secretary, Smith M. McCreight, Esq., where it will be counted. Contest closes at 12 M. August 28th, 1899. All business communications and inquiries should be mailed to THE STAR office. Receipts and Coupons promptly mailed to patrons.

S. M. MCCREIGHT, Secretary.      GLENN A. MILLREN, DR. B. E. HOOVER, DR. R. DEVERE KING, } Com.

**Names of Contestants.**

- |   |                                      |
|---|--------------------------------------|
| Miss Minnie B. Whitmore.....Reynoldsville | Walter B. Reynolds.....Reynoldsville |
| Miss Elsie May Ross.....Reynoldsville     | George Keagle.....Rathmel            |
| Miss Margaret W. Davis.....Reynoldsville  | E. R. Syphrit.....Reynoldsville      |

**Get an Education**  
The best outfit in life. Best schools in Pa. at  
**CENTRAL STATE NORMAL SCHOOL**  
LOCK HARTZ, Pa.

Strong faculty varied courses, good library, modern apparatus in laboratory and gymnasium, handsome buildings, extensive grounds. Shortest time, least expense, State aid to students. In addition to regular courses, elective work is offered in Music, Shortland, Typewriting. Send for illustrated catalogue.  
JAMES ELDON, Pa. D., Principal, Lock Hartz, Pa.

**WHEN IN DOUBT, TRY**  
*Serravallo's*  
They have cured thousands of cases of Nervous Diseases, such as Debility, Lizzie's, Sleeplessness and Yarrow's, Atrophy, &c. They clear the brain, strengthen the circulation, make digestion perfect, and impart a healthy vigor to the whole being. All drains and losses are checked permanently. Unless patients are properly cured, their condition often worries them into Insanity, Consumption or Death. Mailed sealed. Price \$2 per box; 6 boxes, with iron-clad legal guarantee to cure or refund the money, \$5.00. Send for free book.  
For sale by H. Alex. Stokes.

**STOCKHOLDERS' MEETING.**  
Notice is hereby given of the regular annual meeting of the stockholders of the Reynoldsville Creamery Co., which will be held at the creamery, in Reynoldsville, Pa., on **Friday, June 2nd, 1899**, at the hour of one o'clock, A. M., for the election of a Board of Managers and Officers to serve for the ensuing year, and for the transaction of such other business as may properly come before said meeting.  
**W. J. BOKER,** President.  
**H. ALEX. STOKES, Sec'y.**

**EVERY WOMAN**  
Sometimes needs a reliable monthly regulating medicine.  
**DR. FEAL'S PENNYROYAL PILLS,**  
Are prompt, safe and certain in result. The poison (Dr. Feal's) never disappears. Sent anywhere, by mail.  
For sale by your druggist.

**First National Bank**  
OF REYNOLDSVILLE.

Capital, \$50,000.  
Surplus, \$6,500.

**C. Mitchell, President;**  
**Scott McClelland, Vice Pres-;**  
**John H. Kaucher, Cashier.**

**Directors:**  
C. Mitchell, Scott McClelland, J. C. King, John H. Corbett, G. E. Brown, G. W. Fuller, J. H. Kaucher.

Does a general banking business and solicits the accounts of merchants, professional men, farmers, mechanics, miners, lumbermen and others, promising the most careful attention to the business of all persons.  
Safe Deposit Boxes for rent.  
First National Bank building, Nolan block  
**Fire Proof Vault.**

**BUFFALO, ROCHESTER & PITTSBURGH RAILWAY.**

**TIME TABLE.**  
On and after January 1, 1899, passenger trains will arrive and depart from Falls Creek station, daily, except Sunday, as follows:

**DEPART.**  
For DuBois, Big Run and Punxsutawney, 10:32 a. m., 1:30, 3:55, 8:00 p. m.  
For DuBois, Curwensville and Clearfield, 7:25 a. m., 1:40, 3:55 p. m.  
For Ridgway, Bradford and Rochester, 10:11 a. m.  
For Ridgway, Bradford and Buffalo, 1:15 p. m.  
For Reynoldsville, 10:35 a. m., 4:17 p. m.

**ARRIVE.**  
From Punxsutawney, Big Run and DuBois, 10:25 a. m., 12:45, 4:17, 7:25 p. m.  
From Buffalo, Rochester, Bradford and Ridgway, 3:55 p. m.  
From Bradford and Ridgway, 10:32 a. m., 3:55 p. m.  
From Reynoldsville, 1:05, 5:02 p. m.

Passengers are requested to purchase tickets before entering the cars. An excess charge of Ten Cents will be collected by conductors when fares are paid on trains from all stations where a ticket office is maintained. Thousand mile tickets good for passage over any portion of the B., R. & P. and Beach Creek railroads are on sale at two (2) cents per mile.  
For tickets, time tables and full information apply to  
**E. C. DAVIS, Agent, Reynoldsville, Pa.**  
**E. C. LAFAY, Gen. Pass. Agent, Rochester, N. Y.**

**L. M. SNYDER,**  
Practical Horse-Shoer  
and General Blacksmith.

Horse-shoeing done in the neatest manner and by the latest improved methods. Repairing of all kinds carefully and promptly done. SATISFACTION GUARANTEED.

**HORSE CLIPPING**  
Have just received a complete set of machine horse clippers of latest style '98 pattern and am prepared to do clipping in the best possible manner at reasonable rates.  
Jackson St. near Fifth, Reynoldsville, Pa.

**NEW PLANING MILL**  
Will keep in stock a full line of rough and dressed . . . . .

**Lumber, Sash and Doors, Mouldings, Casings, Brackets, Porch Material of all kinds, Shingles, Lath, Plaster, Lime, Cement and Sewer Pipe.**  
Material delivered to all parts of town.  
**J. V. Young.**

**SHICK & WAGNER**

This week we mention a few of the many new things that you will need in the near future. Of course you want the nicest, the most durable goods that you can get for your money.

**WASH GOODS**—Everything that is new and up-to-date from 5c. Lawns and Lapnets to 30c. Silk Gingham. We now have the finest line of Summer Goods that was ever brought to town. Don't fail to see them.

**SHIRT WAISTS**—Your choice from 40c. to \$1.50. Eight styles of 50c. waists in the new stripes.

**DRESS GOODS**—A fine line in Serge, Cashmeres, Poplins, Covert Cloths, Black Crepons, ranging in price from 12 1/2c. to \$2.00.

**LACE CURTAINS**—21 styles in Lace Curtains from 25c. to \$5.00 that we wish to call your attention to. Don't forget that we are headquarters for Curtains of all kinds.

**SHOES**—We have just received a large line of Shoes in tans and blacks for men, women and children.

**DOMESTICS**—Unbleached Muslin from 4 to 7c.  
Bleached " " 5 to 8c.  
Fine Half Bleached Muslin 8c.  
9 and 10-4 Sheeting from 12 1/2 to 25c.  
Calicos " " 4 to 6c.  
Outing " " 5 to 10c.  
Lancaster Gingham 6c.  
Shirting " " 5 to 8c.

A few words to the men and boys—Don't forget that we carry a full line of Men's and Boys' Suits, Shirts, Hats, Caps, Neckwear, &c. We are up-to-date in this line and can give you prices that will surprise you. Call and be convinced. Entrance through main store and on Fifth street. Don't forget the place.

**SHICK & WAGNER,**  
Successors to A. D. Deemer & Co. Next door to Postoffice.

**The Jefferson Supply Co.**

have their Spring Stocks now in, and very complete, too.

Men's Suits of the latest styles and patterns that are stylish.

In Men's Straw and Crash Hats we have just the things to suit you.

Our Ladies' and Children's Sailors and Trimmed Hats are selling fast and we are receiving new stocks every day.

If you want a Bicycle we can fit you out in proper style.

We sell the Demorest Sewing Machine, none better, at \$19.50 to \$25.00.

Shoes we have a complete line of, that are all right in every way.

New Dress Goods in all the newest things. If you see them they will please you.

A fine new line of Children's 2-Piece Suits that can't be beat in quality and price.

**W. L. DOUGLAS SHOES** THE BEST IN THE WORLD

For 15 years the leader in men's fine footwear at a popular price.

W. L. Douglas shoes are Union made, by the best skilled workmen in this country. Look for the stamp on the innersole when buying.

We are the exclusive agents for

**REYNOLDSVILLE, PA.**

Call and see us, and we will try to please you.

**The Jefferson Supply Co.**  
3 BIG STORES { REYNOLDSVILLE, RATHMEL, BIG SOLDIER.

**GOOD AND BAD**  
Stoves resemble each other very closely. It's when they are put in use that they tell their pedigree.

**CINDERELLA STOVES & RANGES**

are made of the best materials, and represent quite a number of improvements in stove making.

They meet every want of the housekeeper in a satisfactory manner at a moderate cost.

**DIRT, WORK, WORRY, WASTE. ALL LEFT OUT.**  
Good bakery—perfect roasters. Sold with that understanding.  
**Reynoldsville Hardware Co.**

**Avalon Terrace**  
Tom Reynolds' Addition to Reynoldsville, Pa.

The best town plot now offered for sale, right in the town, and every convenience. As a future home it is the best; as a growing investment, it is without an equal.

**LOTS HAVE BEEN SOLD AND ARE SELLING NOW. DON'T WAIT. GET THE BEST.**

I have for sale 100 lots, 50x150 ft., on Grant St. These lots will make beautiful building spots and sold on easy payments.

Remember no taxes for 1899.  
Remember the Title to every lot guaranteed.

Lots at \$150, sold \$10 down and 50c. per week thereafter.  
Lots at \$175, sold \$15 down and \$1.00 per week thereafter.

Also for sale, Lots on Pleasant Avenue and 4th Street, farm of 40 acres with house, barn and 100 kinds of fruit trees than any farm in the county.

Reynoldsville, with its Silk Mill, employing 300 hands, Coal Mines, Machine Shop, a Tannery, employing 150 men, and other industries that will be here before the year closes, will make these lots an investment that will more than double themselves before you get them paid for.

**SMITH M. MCCREIGHT, AGENT**