

FOR SALE.

GOOD CABBAGE PLANTS AT H. W. KEEN'S, Waymart, Wayne county, Pa. 100 for 20c; 1000 for \$1.50.

STEAMED CLAMS AT WENIGER'S Saturday night, 10 cents per dozen.

S. C. BUFF ORPINGTON EGGS, Blooded stock, \$1.00 setting of 15. F. B. Lord, Honesdale, Pa. 24elt.

CABBAGE, CAULIFLOWER AND tomato plants for sale at Andrew Liebigs, 307 High street. 4613

FOR SALE—WELL EQUIPPED machine shop and garage located on Industrial Point, Honesdale. Business established 20 years. Best known glass cutters' supply concern in the United States. Edward G. Jenkins, Honesdale, Pa. 42ft.

ANOTHER BARGAIN. THIS TIME Brand New \$350 Piano for \$225. Can't believe it. Come and see. McIntyre. 4812

MISCELLANEOUS.

GO TO THE WOODSIDE, AT BETHANY, Pa., for your Sunday dinner—large cool rooms—orders for dinner taken at any time. Call Bell 908-12. 48e12

WILL PAY CASH FOR YOUR chickens, hens, ducks, geese and eggs. Phone or write A. E. Sisson, Millville, Pa., or write to me, M. Fagin, Liberty, N. Y. 48e18

TWO OR THREE GIRLS WANTED at box factory at once. 37ft.

50 MEN AND BOYS WANTED TO learn glass cutting. Krantz, Smith Co., Honesdale, Pa. 25eltf

LOCAL NEWS

Base ball Saturday at 2:30 p. m.; Honesdale vs. Forest City. Everybody come.

Several new ads in today's issue of The Citizen. Look them over, there may be bargains in them.

The Drum Corps will give a picnic at Bellevue Park on Saturday evening, June 15. Sonner's orchestra will furnish the music.

S. E. Morrison has secured the job to install a steam heating system and do the plumbing in Millionaire B. H. Throop's new palatial home at Elmhurst.

The contract for the new organ for the German Lutheran church has been let to the Moeller Organ Company of Hagerstown, Md. The organ, which is a two manual and will cost \$2000, will be installed for service by the first Sunday in October.

The Thirteenth Street Quoit Club and the West Street "Crows" have arranged for a quoit tournament to be played on July 4th. Both clubs have a number of good players from which teams will be drawn. A most interesting and exciting series of games is anticipated.

The marriage of Miss Mae Kelsey to Ward Hill of Athens, N. Y., will occur June 27th at the home of the bride in Avoca. Miss Amy E. Clark, of this place, will be Miss Kelsey's maid of honor. Miss Kelsey was a former teacher of music in the Honesdale High school.

Mrs. Minor Crosby will entertain the Ladies' Aid Society of Indian Orchard on Wednesday afternoon, June 19, for tea. There will be ice cream and cake social held at the same place in the evening for the benefit of the Bethel Sunday school. A cordial invitation is extended to all to attend.

James Kelly, of Forest City, who played third base for the ball team of his home town, is to-day suffering from a badly fractured ankle, received during the recent game with Carbondale. Kelly was sliding into third base when the accident occurred. The injury is quite serious.

Now is the time to get reductions in furniture. Elsewhere in today's Citizen appears an advertisement making an announcement of a sale that is now being conducted at the Loercher Furniture House. In connection with the same establishment is an undertaking business, over 20 years' stand in Honesdale. See ad for particulars.

All friends of the late Mrs. Kalkman desiring to attend the funeral services will be given an opportunity to do so. The remains, upon the arrival of the 1:30 Erie train, will be taken to St. John's church, Friday afternoon, will be taken to St. John's Lutheran church, where the funeral services will be conducted by Rev. C. C. Miller.

Neal, son of Rev. and Mrs. W. H. Miller, of this place, who has been clerk at Green Ridge station on the Delaware and Hudson railroad, has just received another good promotion. He started in at Plymouth Tuesday morning, having been transferred from Green Ridge to that place. Neal will have charge of the freight department, which takes care of mine and coal tonnage.

At a special meeting of the town council, held Wednesday evening, Burgess C. A. McCarty was instructed to draft an ordinance on the closing of South Main street. Superintendent S. A. McMullen of the water company, was instructed to secure four attachments to be placed on fire hydrants, which would be used for sprinkling purposes. No action was taken regarding the sprinkling of the streets.

After trying up the city business of Carbondale for more than seven months the council deadlock is at last broken. The end came on Monday night, when Mr. Cacey, a Democrat, voted in favor of Mr. Davidson, Republican, for chairman and the latter was declared duly elected by City Clerk Likely. During this long deadlock the city business of Carbondale has suffered greatly, but now with it broken, the city's affairs will gradually be adjusted into their proper channels again.

GURNEY ELECTRIC ELEVATOR COMPANY

(Continued from Page Four).

located in the foundry building and another in the saw-tooth section, and they will contain modern facilities in the shape of lockers, wash basins, toilets and shower baths.

The business office and Drafting room will be located in the upper right hand corner of the saw tooth section. The operating and planning office will be located under the saw tooth section adjoining the machine department.

The tower shown rising from the centre of the main building will contain two elevator shafts 150 feet high, where machines may be tested before shipment.

Two large jib cranes are located at the left of the foundry building for handling flasks, heavy scrap iron, etc. The large central section of the machine shop will be served with a ten ton travelling crane, and



J. D. WESTON, Who Was Very Active in Securing This New Industry.

certain small jib cranes will also be conveniently located in this section to assist in the assembling work.

A modern heating plant will be installed, and this, together with the liberal lighting and facilities for ventilation, should make the shops an exceedingly pleasant place to work.

In addition to the crane facilities described above, industrial railway tracks will be placed in such a manner as to facilitate the handling of materials.

In general the type of construction will be as follows:

Steel frame work with brick sills, modern steel window frames, and approved type of roof construction. The plant will be equipped with the necessary fire prevention apparatus, and taken as a whole it will be thoroughly modern and up to date in every respect.

The work and design of construction is in charge of Day & Zimmermann, engineers of Philadelphia, who have been engaged on account of their large experience in industrial plants.

An industrial study of the shop of the Lehigh Coal & Navigation Company at Lansford, Pa., and the design and construction and equipment of their large machine shop as part of the complete ultimate plan. The shops serve all of the Lehigh Coal & Navigation Company's interests, including manufacture of, and repairs to, mine equipment, and locomotives, both standard gauge and for the mines.

Consulting engineers for the Jeannette Iron Works Company at Hazleton, Pa., having in charge all features bearing upon the industrial layout, including purchase of all new equipment and the moving of all



HON. A. T. SEARLE, Honorary Member Board of Trade Committee.

old equipment from the old shops at Jeannette to the new shops at Hazleton, Pa. This work also included the entire motor equipment and power plant. This company manufactures heavy duty mine pumps.

A complete preliminary study of the requirements of the Wagner Electric Mfg. Co., St. Louis, Mo., as the result of which a large plant was designed and constructed for the manufacture of motors, electrical instruments, and transformers.

The layout, design and construction of a large plant for the Cincinnati-Bickford Tool Company at Oakley, Ohio, for the manufacture of drill presses and radial drills.

An industrial study of the plant of Warner Brothers Company, Bridgeport, Conn., together with their

power requirements, which resulted in doubling the capacity of their plant and the entire rearrangement of all departments, as well as a complete new power plant and the installation of electric drives throughout. This company manufactures corsets.

The design and construction of extensive additions to the plant of Wm. Knabe Mfg. Co., Baltimore, Md. The work included the construction of large reinforced concrete additions, and changes from belt to electric drives throughout. The plant manufactures the well known Knabe pianos.

The design of the electric equipment for large Lidgerwood Cableways and the construction of the entire apparatus at the Gatun Locks, Panama, C. Z. This plant consisted of eight of the largest cableways which have ever been constructed, and were designed for and have successfully handled all of the materials entering into these great lock walls.

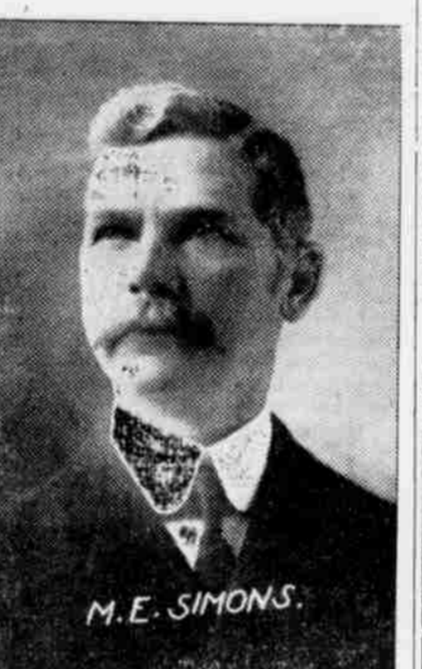
A complete industrial study of the requirements of the Watson Wagon Company of Canastota, N. Y. The results of this work was the design and construction of large extensions to the plant and complete rearrangements of the industrial departments and installation of electric drives. This plant manufactures the well-known Watson bottom dump contractor's wagon.

The company has in addition to the above, handled many commissions of a similar character. They have made complete investigations and reports on many industrial plants which have resulted in the rearrangements of departments and minor changes in them thus increasing production without the construction of additional buildings. Among such commissions may be mentioned:

H. Franklin Mfg. Co., Syracuse, N. Y. Link Belt Company at Philadelphia and Chicago. Ames Iron Works, Galesburg, N. Y. Bausch & Lomb Optical Co., Rochester, N. Y. American Optical Co., Southbridge, Mass.

They have acted as consulting engineers for:

The Duff Mfg. Co., Pittsburg, Pa. Deere and Company, Moline, Ill. Automatic Sprinkler Co. of America, Akron, Ohio. Ox Fibre Brush Co., Frederick, Md.



M. E. SIMONS, DISTRICT ATTORNEY SIMONS, Legal Adviser Board of Trade Committee.

Tabor Mfg. Co., Philadelphia. Phila. Textile Mfg. Co., Philadelphia.

Heald Machine Company, Worcester, Mass., and many other large concerns in various parts of the country. Among the important commissions which the Company has undertaken at the present time are new plants for the Hess Bright Mfg. Co., Phila. Textile Machinery Co., Provident Life & Trust Co., all of Philadelphia; the new plant for Barnard & Leas Mfg. Company, Moline, Ill., and the Gurney Electric Elevator Company, of Honesdale, Pa.

The Company's success in the industrial field is due to the ability of the members of the organization to co-operate with the clients in making a complete study of the requirements of the plant from an industrial standpoint, and this is considered so important by them that they have never, in a single instance, designed extensions to an old plant or prepared plans for a new one without having first thoroughly gone into this phase of the problem, and as a result reached conclusions which have been proved in all of their details before plans were prepared.

In addition to this industrial work, the company maintains a public utility department under the direction of which many reports have been made on public utility properties. The company also acts as general managers for the Penn Central properties, and this work includes the operation of all the electric light in the cities of Altoona, Huntingdon, and Lewistown, with a large steam and hydro-electric plant at Warrior Ridge, Pa., and about 150 miles of primary high tension transmission lines and several miles of secondary lines. The high tension lines extend from Lewistown, Pa., on the east, to Twin Rocks, Pa., on the west. In addition to the lighting of the towns mentioned above, many of the large coal mines in Cambria county are served with power from the company's lines. They also operate the gas companies of Lewistown and Huntingdon, Pa., and all electric railway running from Lewistown Junction to Reedsville.

The Citizens Traction Co. of Venango county is also operated by them and consists of several miles of electric railway as well as lighting in the towns of Oil City and Franklin, Pa. The Company's main office is located at 608 Chestnut street, Philadelphia, and the New York office at 43 Exchange Place, New York City.

This plant is unique inasmuch as the system of management best adapted to the manufacture of elevators was developed under the direction of H. L. Gantt, of New York, in

the old factory, and the new factory has been so designed as to enable that system to be operated economically and effectively.

Bearing in mind that the object of such a plant is to produce elevators economically and promptly, the operating or planning office, from which all manufacturing work is directed, has been centrally located in such a manner as to bring it in close touch with the most important parts of the factory.

In this office is gradually collected in a readily available form, the important information that a good superintendent usually carries in his head, but which, with the growth of the factory, it gradually becomes impossible for him to use effectively, and which is often lost when he is called to another sphere.

The trained corps in the office furnish with each order sent out, the best available information as to how the work should be done. If any advances are made they are recorded and go out as instructions the next time the piece of work is done. Thus all improvements are made promptly effective, and all chance of backsliding is practically eliminated.

The elevator work is divided between two companies, the parent company being the Gurney Electric Elevator Company of Honesdale, Pa. This company handles the designing and manufacturing of all the apparatus. The subsidiary company is the Gurney Company of New York, which is a selling and construction organization.

The officers of Gurney Electric Elevator Company are:

Mr. H. F. Gurney, President. Mr. W. B. Holmes, Vice-President. Mr. F. S. Merritt, Secretary and Treasurer. The officers of the Gurney Elevator Company are: Mr. H. F. Gurney, President. Mr. E. K. Little, Vice-President. Mr. W. D. MacQuisten, Secretary. Mr. W. L. O'Connell, Treasurer.

Martin Reader Dead.

Martin Reader died at his home in Hawley on Sunday afternoon at the age of 70 years. He was a most highly respected resident of this county for many years. For many years he successfully conducted the Wayne County House at Hawley and about 15 years ago he took charge of the Reader Hotel also at Hawley, which he continued to run until February of this year when he sold out his interests. The funeral was held from his late home in Hawley on Wednesday afternoon, Rev. R. Lucas officiating. He is survived by his wife and eight daughters, and one son, namely: Mrs. C. H. Ehret, of New Brunswick, N. J.; Miss Gussie of New York; Mrs. Amella Rose of Englewood, N. J.; Mrs. Irving B. Brown of Honesdale; Mrs. Theodore Distler, Mrs. Joseph Steele and William of Hawley; Misses Sarah and Anna at home.

There will be a base ball game on the local grounds on Saturday between Honesdale and Forest City.

RUTLEDGEDALE.

(Special to The Citizen.)

The Children's Day exercises which were held in the M. E. church at Galliee on Sunday evening were listened to by a large crowd. The recitations by the little folks, the rose drill by the intermediate pupils and music by the choir were excellent.

Mr. and Mrs. Willis Blackwell and children of Callicoon, spent last Saturday and Sunday with Irving Rutledge and wife.

M. E. Lavo, of Bethany, spent the week with his daughter, Mrs. A. M. Rutledge.

Mr. and Mrs. Corwin Valentine of Damascus, spent Sunday with Miss Nettie Pollock.

Mr. and Mrs. Amos Rutledge and children spent Sunday at Bethany. Mrs. Horace Taylor, of Honesdale, is visiting relatives in this vicinity.

Frost in many places June 8 and 9.

Several from here attended the Stalker-Rutledge wedding at Lookout on Wednesday evening last.



The Horse Knows

The difference between a harness or a bridle that is right and one that is wrong. Many a good horse is spoiled by a poor harness. Many an accident would be saved by a safe harness. A cheap harness may be very dear, but a dear harness need not always be good. It is all in using good leather and knowing how to make them. We have had nearly fifty years' experience in the harness business and we will give you the benefit of that experience whether you buy our own make or a factory harness, but our own make we know is the best for you to buy, because they have the material that will wear. Ask your neighbor, who has used them.

A large assortment of trunks, traveling bags, and all kinds of leather goods always found at

BETZ'S Harness Store HONESDALE, PA.

VOCAL MUSIC

Marchesi Method Taught by

Miss Blanche Pearce

who is a Graduate of

Combs Conservatory of Music, PHILADELPHIA.

and also a

Pupil of Mrs. Philip Jenkins, Philadelphia.

For terms apply to

Miss Blanche Pearce, Ridge Street, Honesdale, Pa.

Saturday Specials

Our Red Band Brand Of Fine Candies

Best 10c Grade In Town

SATURDAY SPECIAL

2 Pounds for 15c

Try a glass of Our Chocolate Soda made from HUYLER'S chocolate.

"THE BEST IN THE WORLD"

Paul Frederic