

# NATURAL RESOURCES

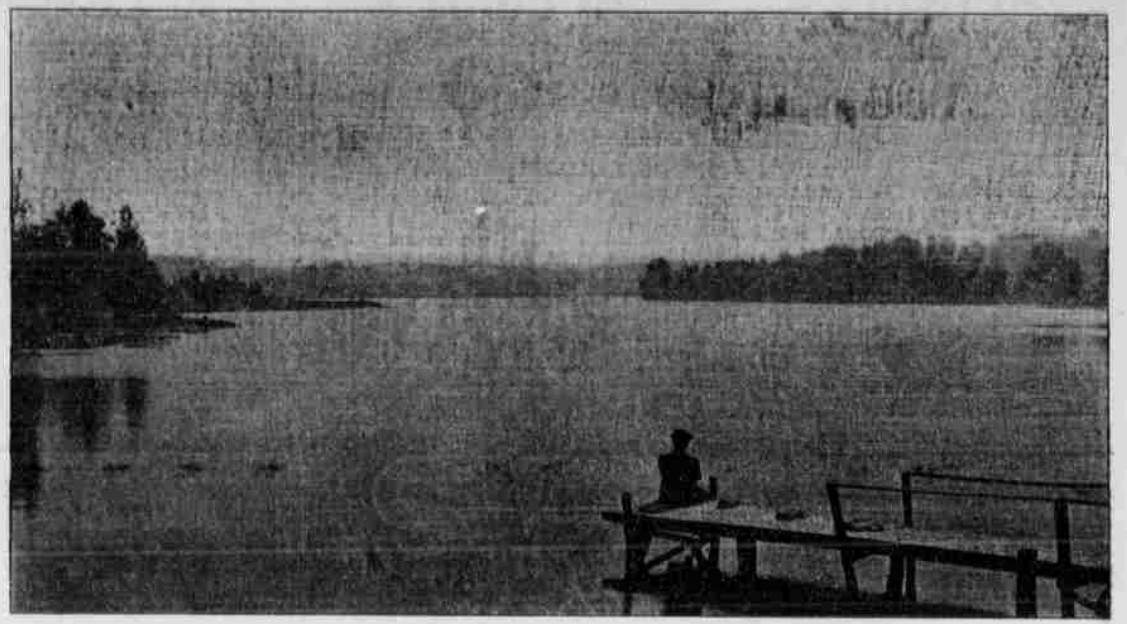
Lake.	Town.	Acreage.	Elev'n.
Union	Manchester	75	950
Price	"	80	1100
VanOrden	"	50	1000
Quinsigamond	South Canaan	175	1400
Curtis	"	40	1375

Palmyra, Paupack and Salem.  
 Wilsonville 7000 1200  
 The largest of the lakes is the contemplated Wilsonville dam above Hawley with its acreage of 7000 and a depth of 45 feet, and will contain billions of cubic feet of storage. With a fall of 312 feet in 1½ miles and a large natural flow of the Wallenpaupack creek and the gigantic storage of the Wallenpaupack Valley, it will develop 10,000 horse power.

From present indications the Hydro-Electric plant at Hawley is an assured fact and within a reasonable time will be in a position to furnish power to manufacturers, and with the natural resource and facilities that we have in Wayne county there are no reasons why this power should not be used for the upbuilding of our own towns and for the advancement of towns and cities at a distance from the source of supply.

We reprint a part of an engineer's report on the water power on the Lackawaxen about 2½ miles above Honesdale and a description of the storage lakes that can be used to feed this power proposition.

This company was incorporated under the laws of the state of Pennsylvania August 16, 1904, for the purpose of storage, transportation and furnishing of water for manufacturing and



LAKE QUINSIGAMOND, NEAR SOUTH CANAAN.

No. 2, Hankins. Situate in Mount Pleasant township on a tributary to the west branch of the Lackawaxen river, 12 miles from Honesdale. Dam 22 feet high. Flows at low water mark 1,085,000 sq. feet of 24.90 acres and at high water mark 4,305,000 cubic feet or 98.82 acres. Holds when full 69,407,500 cubic feet of water. This reservoir the company owns absolutely and have sold certain rights in it only.

No. 3, Miller. Situate in Mount Pleasant township on a tributary to the West Branch of the Lackawaxen river. Dam 24½ feet high. Flows at low water mark 527,500 sq. feet or 12.11 acres, and at high water mark 4,230,000 sq. feet or 97.10 acres. Holds when full 73,834,750 cubic feet of water. To this reservoir the company has flowage rights.

No. 4, Long. Situate partly in Mount Pleasant and partly in Dyberry townships; has no large inlet but is fed principally by springs. Dam 20 feet high. Flows at low water mark 2,782,500 sq. feet or 63.87 acres and at high water 6,685,000 square feet or 153.46 acres. To this reservoir the company has flowage rights.

No. 5, Swamp. Situate in Clinton township, on Cramer Pond Brook, a tributary to the west branch of the Lackawaxen river and 0 1-2 miles from Honesdale. Dam 20 feet high. Flows at low water mark 732,500 sq. feet or 16.81 acres, and at high water 2,417,500 sq. feet or 55.49 acres. Holds when full 33,657,500 cubic feet of water. To this reservoir the company has flowage rights.

No. 6, White Oak. Situate in Clinton township, on the White Oak Creek, a tributary

pense. The Lackawaxen river itself would furnish sufficient water power at all ordinary times. Only in times of low water would it be necessary to use the reservoirs.

Power developed depends on size of dam to be built near Prompton on the Lackawaxen river. It is estimated that a thirty foot dam at that point would give minimum horse power all year through of at least 1000.

The above lakes specified in engineer's report have a total storage capacity of 947,544,250 cubic feet of water and would furnish 5700 cubic feet flow per minute for 300 days, at ten hours per day operation and for 115 days at 24 hours per day operation.

With the increase of our industrial prosperity would come better railway facilities and more ideal conditions for the traveling public.

The labor question will adjust itself, for if we can create the demand for labor at fair wages and under fair conditions, labor will find us out.

\*\*\*\*\*

### PROFIT IN SUMMER BOARDERS.

There is good money in taking summer boarders. Wayne county is especially adapted to taking city guests, owing to its natural resources. One, and it might be termed the chief attraction for the summer visitor, is the lake. It is here that the guests enjoy themselves—bathing in its waters, boating, gathering lilies and fishing. The farm land that has a lake or pond upon it can be enhanced in value many times. The natural scenery cannot be surpassed.

The outlay preparatory to taking guests is not great. The improvements can be made at different seasons. With the proceeds or profits of the first or second year additional sleeping room can be made by building on to your present home. Another year the house could be painted and the approach to your home possibly made more attractive. If you have a lake on your premises a section of the underbrush could be cut along one side of it, making a lover's lane. Boards could be nailed on cleats between trees for seats and a swing or two might be hung beneath a spreading tree nearby, making the surroundings particularly attractive.

When summer guests come they come for a rest. Hammocks near the house, if possible in sight of the lake, would make an ideal place to rest. Take your boarders for a ride to Honesdale and let them shop; also during evenings. Not necessarily to Honesdale every night. Allow them to think that you appreciate them and would like them to return next season. If you do this they will return and by being kind and thoughtful to them they will influence other friends and the chain will grow.

It is not necessary to always have the table laden with meat. The city guest has probably been recommended to your place by fresh eggs, milk, butter, vegetables, berries, fruits, etc., that you furnish. On the other hand, don't stint your table. Ice cream served once, twice or oftener during the week is always relished. You can get from \$8 to \$11 per week for room and board. This insures you a good class of people. Should your board be less it will have a tendency to cheapen your place.

Give your farm a name. Place it upon a neatly painted board (black and white would be appropriate) and suspend from an archway or over the door of your home.

The different railroads operating in Wayne county publish summer boarder books. You can have your name, nearest post-office, price of board asked and any other data published free in them. Outside of this, before becoming established, you want to call on or write to The Citizen and get prices upon stationery and booklets which the Citizen Publishing Company, Honesdale, makes a speciality.

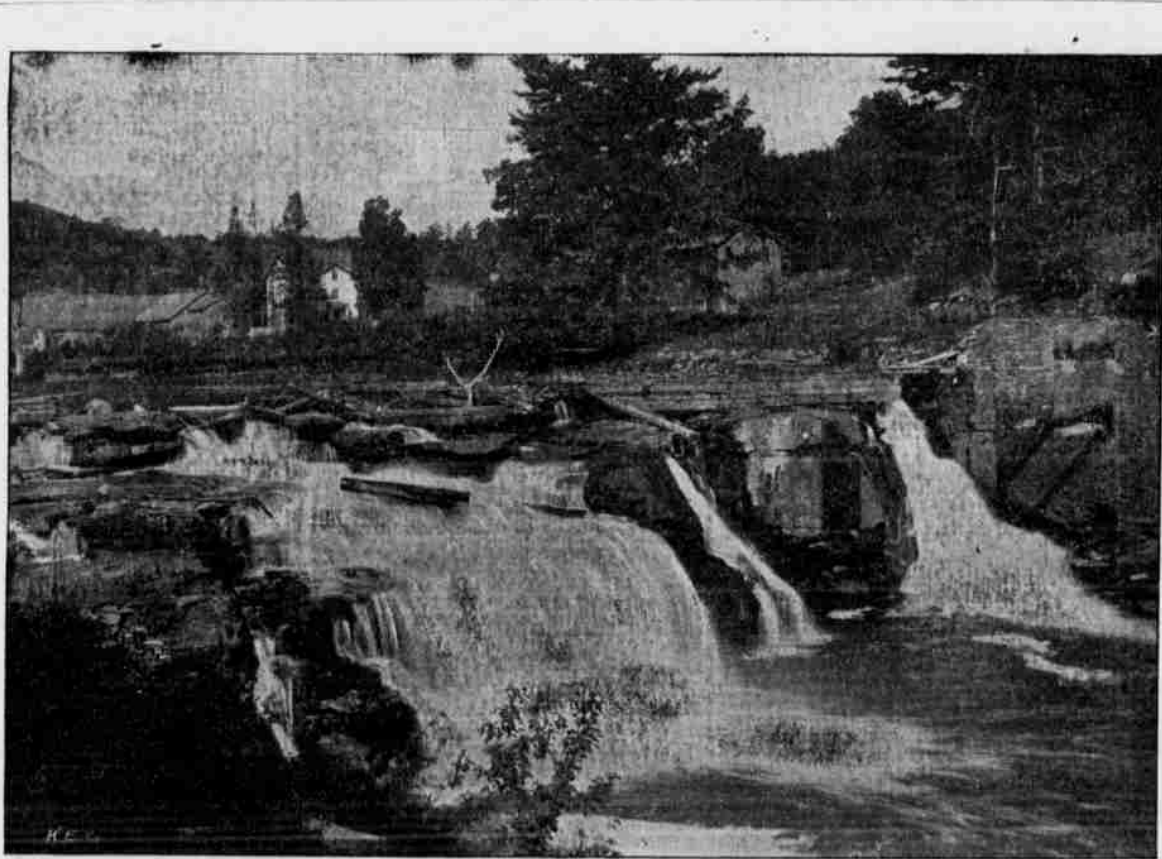
If you are not taking guests, start next season. You will never regret it.

\*\*\*\*\*

### VEGETABLES ON AN ACRE OF LAND.

With land in the proper condition, an authority says a good farmer can raise on one acre any of the following:

- One acre of onions, 445 to 600 bushels.
- Tomatoes, 300 to 400 bushels.
- Sweet potatoes, 500 to 600 bushels.
- Cauliflower, 100 to 300 pounds, \$450.



THE WALLENPAUPACK FALLS, HAWLEY, PA.

other purposes, and for the creation, establishment, furnishing, transmission and using water powers therefrom.

Honesdale was formerly the head of the D. & H. canal. This canal took coal from Honesdale, Pa., to the Hudson river at Rondout, N. Y. The Canal company had bought a large amount of land and built a number of reservoirs to furnish water for this canal at Honesdale. These reservoirs are now the property of the Wayne Storage Water Power Company.

The company owns upon the Lackawaxen river, six reservoirs. These all empty into the Lackawaxen river, which is a river of considerable size. The water was taken from this Lackawaxen river at Honesdale at the head of the Canal. The Wayne Storage Water Power Company have also purchased a plot of ground, containing something over 30 acres, about two and one-half miles from Honesdale, where there can be a fall of 26 to 30 feet.

The six reservoirs are as follows:

No. 1, Belmont. Situate partly in Mount Pleasant and partly in Preston townships. Dam 25 feet high. Flows at low water mark 9,347,500 sq. feet or 214.58 acres. Holds when filled to present 25 foot level, 13,995,750 cubic feet of water. If dam was raised to 45 foot level it would flow 22,370,300 sq. feet or 513.35 acres, and would hold when full 455,170,750 cubic feet. (The company has the right to raise this reservoir to what is known as the 45 foot level). This reservoir the company owns absolutely.

to the West Branch of the Lackawaxen river, 8 miles from Honesdale. Dam 26 feet high. Flows at low water mark 2,585,000 sq. feet or 59.34 acres and at high water mark 15,577,750 sq. feet or 357.61 acres. Holds when full 248,788,750 cubic feet of water. To this reservoir the company has flowage rights.

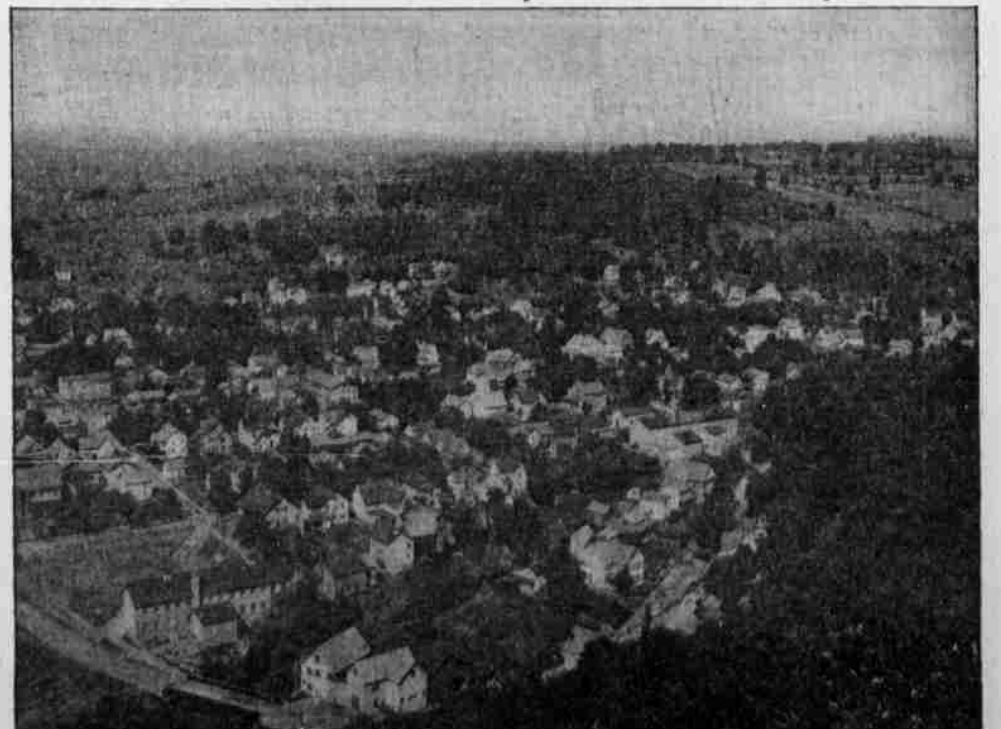
The Wayne Storage Water Power Company also own two other reservoirs as follows:

Lower Woods. Situate in Lebanon township, on the East Branch of the Dyberry river, 14 miles from Honesdale. Dam 18½ feet high. Flows at low water mark 1,810,000 square feet or 41.55 acres and at high water 4,177,500 sq. feet or 95.96 acre. Holds when full 61,758,750 cubic feet of water. There could be obtained here a fall of 85 feet.

Upper Woods. Situate in Lebanon township, being a natural lake on the East Branch of the Dyberry river about 15 miles from Honesdale. Flows at present 3,477,500 square feet or 79.83 acres. If a dam were erected to raise the water 20 feet, would flow 5,017,500 square feet or 115.11 acres, and the reservoir thus formed would hold when full 84,950,000 cubic feet of water.

The company has full and complete maps made for each of these reservoirs, showing the amount of water they will hold from low water to high water mark, the computation having been made for every foot in height.

These reservoirs have solid, substantial dams built mostly from stone at a very great ex-



HONESDALE LOOKING WEST FROM IRVING CLIFF.