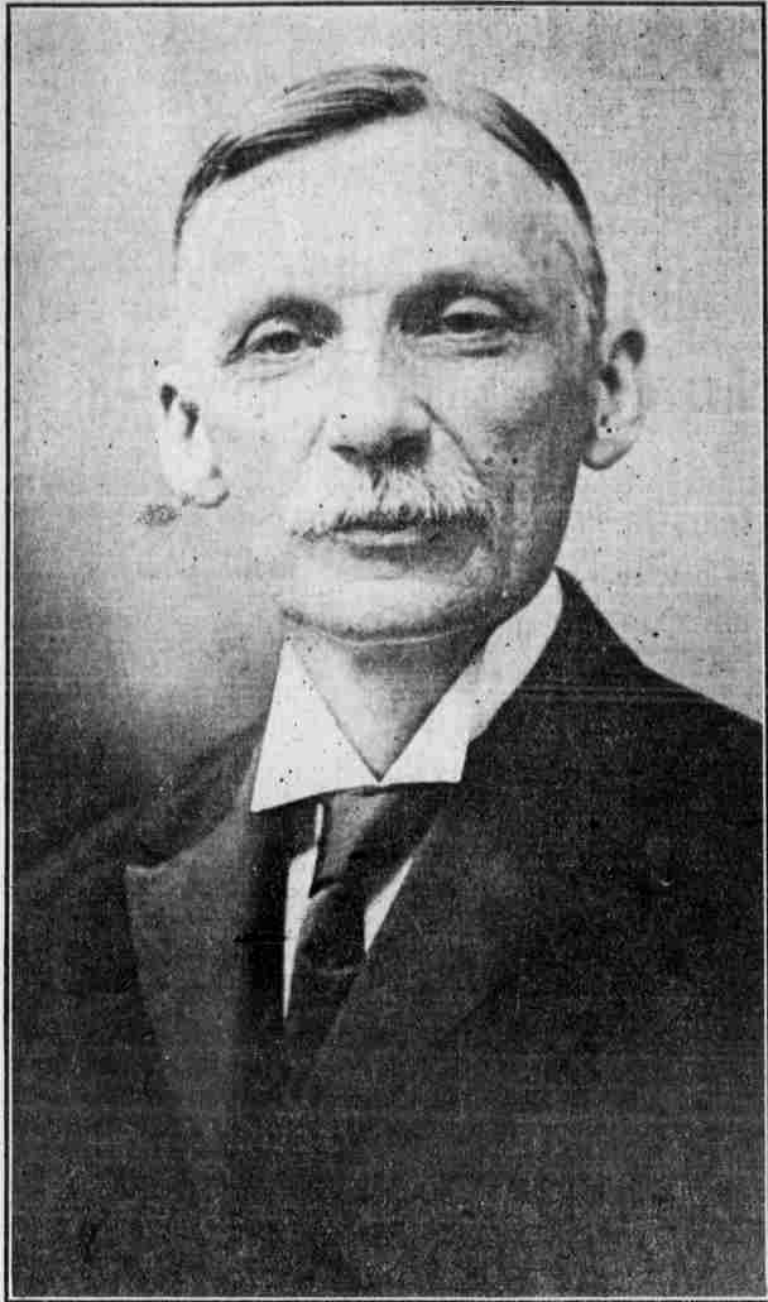


CANDIDATE FOR CONGRESS



W. D. B. AINEY,

Republican Nominee For Congress From The Fourteenth Pennsylvania District.

Perhaps the best introduction Mr. Ainey to the Republican voters is the following taken from his home paper published before his nomination:

It was surprising with what absolute unanimity men from all parts of the county and even in adjoining counties centered their views as to their ideal for that position, upon one name. The store, the office, the public place where the people were accustomed to gather in groups in different portions of the county expressed opinion, unitedly and overwhelmingly in favor of W. D. B. Ainey as their choice. One by which at this time can be given of one people from all these different sections have sought out Mr. Ainey and urged him to be their candidate until, unusual though it may seem, it is nevertheless true, that this time the office has sought the man. Mr. Ainey is a brilliant and hard-working lawyer, a student of men and affairs, a speaker of more than ordinary power, a man who has always been identified with the

higher ethical and religious movements of the age; a man who stands strong and firm on all moral lines. In politics a Republican, but one who has never hesitated to raise a warning voice against wrong or error even at the risk of personal popularity. With all he is a man of genial parts and in friendly touch with the great mass of people by whom he is so well known and greatly esteemed.

Mr. Ainey was born in New Milford and his entire active life has been lived in this county and district. He started at the bottom of the ladder and has successfully climbed to the top in his chosen profession and he now stands as one of the leading lawyers of Northeastern Pennsylvania. He is an active churchman and one of the directors and treasurer of the Montrose Bible Conference movement.

His nomination and election will gratify the people and assure them of a representative in congress whose ideals would be lofty, patriotic and purposeful and who would indeed be a representative.

CANDIDATE FOR PROTHONOTARY.



JOHN N. SHARPSTEEN.

To the Republicans of Wayne Co.:

I take this means of announcing myself as a candidate for the nomination of Prothonotary at the primaries, Sept. 30, 1911.

To most of you I am known personally. During my seventeen years of service as a clerk in the Honesdale postoffice my efforts have been to perform my duties faithfully and courteously to the patrons of the office and the public generally.

To the voters with whom I am not personally acquainted I would say that, since a severe injury sustained by my father a few years before his accidental death when I was sixteen years old I have tried to make an honest living. My birthplace was in Texas township, district No. 4, Wayne county. My school days were limited to the district school and the Honesdale High school. As a boy of eleven years I spent my summers slate picking on the Delaware & Hudson dock and attended school during the winter. I also spent several summers working on a farm in Cherry Ridge.

After school I entered the office of the Honesdale Iron Works, known now as the Guernev Electric Elevator Co., where I stayed a number of years and later entered the Honesdale postoffice serving two years under William F. Briggs. I then went to the Carbondale Lumber company as a bookkeeper, remaining with them until the appointment as postmaster of Miss Mary E. Gerety, who later became the wife of Hon. C. A. McCarty. In June, 1896, I returned to the Honesdale postoffice where I

have been employed ever since. In coming before the people and asking their assistance and vote at the coming primaries, let me say that I am no tool of any boss or bosses. I simply desire in common with every American citizen to better my condition. Your support will be appreciated and if nominated and elected I will devote all my time and attention to the duties of the office to which I aspire.

As the son of the late Newton Sharpsteen, veteran of the Civil war, I have an interest in and sympathy with all veterans.

If elected, I will resign my position in the postoffice and personally attend to the duties of Prothonotary. I will endeavor to be courteous and obliging in my dealings with everyone.

Most cordially yours,
J. N. Sharpsteen.

REPUBLICAN CANDIDATE FOR COUNTY COMMISSIONER.



G. HOWARD GILPIN,
Waymart, Pa.

DEMOCRATIC CANDIDATE FOR SHERIFF.

I respectfully ask the Democratic voters of Wayne county to give me their earnest support at the primary election to be held Saturday Sept. 30, 1911.

Sincerely yours,
F. C. KIMBLE,
Honesdale, Pa. ootif.

—The coming attraction—"Let George Do It"—will be very entertaining. Don't forget that.

INCREASED PRODUCTION OF ANTHRACITE.

Pennsylvania's Output in 1910 Largest in History With One Exception.

Except that of the "boom" year, 1907, the production of anthracite in Pennsylvania in 1910 was the largest in the history of the industry, according to E. W. Parker, coal statistician of the United States Geological Survey. The quantity produced in 1910 was 75,433,346 long tons, an increase over 1909 of 3,058,997 long tons, the value increasing from \$149,415,847 in 1909 to \$160,275,302 in 1910. The production in 1910 was within almost exactly 1,000,000 long tons of the maximum record for 1907, when the output amounted to 76,432,421 long tons. The value of the product in 1907 exceeded that of 1910 by \$3,308,754. The average price per ton at the mines in 1910 was \$2.12, against \$2.08 in 1909, \$2.13 in 1908, and \$2.14 in 1907.

Practical Coal Conservation.

Through the recent invention, says Mr. Parker, of grates and furnaces adapted to the use of small sizes of anthracite, and owing to the higher prices of the prepared sizes, the percentage of waste has been reduced to a minimum. "Buckwheat," "rice," "barley," and even culm are now important steam-raising fuels, particularly in hotels, apartment houses, and large office buildings in the cities of the East, where smoke-inhibiting ordinances are in force. An object lesson in practical conservation is here furnished and to the credit of the operators in the anthracite region he it said that it was put into effect a number of years before the agitation over the conservation of natural resources began. Not only are the small sizes produced in the present mining operations sold and utilized, but the unsightly culm banks which blotted the landscape in the anthracite region are fast disappearing as the usable coal is being recovered from them by washeries.

Of the total production in 1910, 1,184,623 tons were recovered from the old culm banks, and 91,833 tons were recovered by dredges from the bed of Susquehanna River.

The anthracite-producing industry was without any marked features during the year. The operators and miners had in 1909 renewed by mutual agreement for a third term of three years the awards of the Anthracite Commission that settled the great strike of 1902, and while there were a few temporary shut-downs because of labor difficulties, there was only one in which the idleness extended over 12 days, and most of them were from one day to one week. The board of conciliation created by the Anthracite Commission, consisting of six members, three representing the operators and three representing the miners, has done exemplary service in bringing the employers and employees into harmonious relations and has demonstrated the wisdom and practicality of conciliatory methods of settling labor disputes.

Utilizing the Consumers' Cellars.

The policy adopted several years ago by the operators, of allowing discounts from the circular prices for coal purchased in the spring and early summer months, continues to work satisfactorily. The discounts allowed on domestic sizes are 50 cents a ton in April, 40 cents a ton in May, 30 cents in June, 20 cents in July, and 10 cents in August, the circular prices being restored in September. The inducements thus offered to make the cellars of consumers the storage places for the winter supplies of fuel has had a notably steady influence on the trade and gives steady employment to the miners throughout the year, against the conditions of rush work in winter and much idleness in summer prevailing before the rule was put into effect.

Fatalities in the Mines.

According to a statement made to the United States Bureau of Mines by Mr. James E. Roderick, chief of the department of mines of Pennsylvania, there were 691 fatal and 1,050 non-fatal accidents in the anthracite mines in 1910. This was an increase of 34 in the number of fatal accidents and of 15 in the number of men injured as compared with 1909, when 567 men were killed and 1,025 injured. As the production in 1910 amounted to 75,433,246 long tons, the quantity of coal mined for each life lost was 125,513 long tons against 126,644 long tons in 1909. The death rate per thousand employees in 1909 was 2.55, against 3.31 in 1909.

CANDIDATE FOR SHERIFF



T. Y. BOYD.

I wish to announce to the Republican voters of Wayne county that I am a candidate for the nomination at the coming primaries for the office of Sheriff. Your vote and your support in my behalf will be greatly appreciated.

T. Y. BOYD,
Boyd's Mills.

NEW HAY FEVER TREATMENT.

Sufferers from hay fever are likely to be struck pleasantly by the proposal to treat their ailment by sitting for half an hour or so in a wine cellar. But the wine, it seems, has nothing to do with the case; it is the frost that is depended upon. By the way, has the effect of an unchilled cellar ever been tested? The theory of the New York hotel manager, put into practice lately with results said to be satisfactory, is that since the malady disappears with the first frost, it is well to try a little artificial frost. This, of course, rests upon the pollen theory. It is open to those who attribute hay fever to the strong sunlight of summer to prove that the same results may be obtained by darkness without the frost. Maj. Woodruff cites a Massachusetts doctor who has used smoked glasses successfully in his own case, and with patients. There seem to be no statistics showing the proportion of blands among sufferers from hay fever. Maj. Woodruff's view, based only on personal observation, is that "it seems to be more prevalent among blonds who are living in countries lighter than their ancestral home." But there are as many theories on the subject as there used to be in regard to malaria, and there are few subjects that are discussed with such intensity of opinion.—[Springfield Republican.]

THE LARGEST CITIES.

The following are the population and area of the ten largest cities in the world at the latest date for which figures are available:

Table with 3 columns: City, Area in Acres, Population. Lists London, New York, Paris, Tokio, Chicago, Vienna, Berlin, St. Petersburg, Philadelphia, Moscow.

A GUESSING GAME OF NAMES.

- A disagreeable girl—Annie Mosity. A sweet girl—Carrie Mel. A very pleasant girl—Jenny Rosity. A smooth girl—Amelia Ration. A clear case of girl—E. Lucy Date. A geometrical girl—Polly Gon. A flower girl—Rhoda Dendron. A musical girl—Sarah Nada. A clinging girl—Jessie Mine. A nervous girl—Hester Ical. A muscular girl—Calle Sthenics. A lively girl—Annie Matton. An uncertain girl—Eva Nescent. A big girl—Eille Phant. A warlike girl—Mulle Tary.

Roll of HONOR

Attention is called to the STRENGTH of the

Wayne County Savings Bank

The FINANCIER of New York City has published a ROLL OF HONOR of the 11,470 State Banks and Trust Companies of United States. In this list the WAYNE COUNTY SAVINGS BANK

Stands 38th in the United States, Stands 10th in Pennsylvania, Stands FIRST in Wayne County.

Capital, Surplus, \$527,342.88 Total ASSETS, \$2,951,048.26

Honesdale, Pa., December 1, 1910.

DIGNITY and CONFIDENCE

It is wonderful what an amount of dignity and confidence one gets from the fact that he has a growing bank account. The possession of money you have earned and saved yourself makes you independent mentally as well as in regard to material things.

Become a regular depositor in a good, strong, growing institution like the

Honesdale Dime Bank

We will help you with three per cent interest. Each new depositor is presented with a useful, as well as ornamental household bank.

We make a specialty of loaning money to Wayne county people. Business accounts solicited.

Call and see us or you can do your banking with us by mail. Write and we will tell you how.

JOS. A. FISCH, Cashier. E. C. MUMFORD, President.

RETURN OF COUNTRY BOARDERS

The back of summer's heat is "broke." The mournful frogs have ceased their croaking. And summer boarders, all tired out, in droves to city homes are flocking. Mosquitoes fierce and katydids Have quit their loud and cheerless singing. And every motor, train and boat To cheerful homes are wanderers bringing: While stay-at-homes with open arms And smiling face their friends are greeting, Who all are glad to reach once more A place where food is fit for eating— A place that's free from bites and stings Of spiders, bugs and other vermin; From watered milk and pounded steak And eggs whose age none can determine.

DR. E. F. SCANLON,

Only Permanent Resident Specialist In Scranton.

TEN YEARS' SUCCESS IN THIS CITY.

CURING VARICOCELE

Varicocele impairs the vitality and destroys the elements of manhood. I daily demonstrate that Varicocele can be positively cured without the organs being mutilated; they are preserved and strengthened; pain ceases almost instantly; swelling soon subsides; healthy circulation is rapidly re-established, and every part of the organism benefited by the cure. A written guarantee with every case I accept. Write if you cannot call. Consultation and examination free. Credit can be arranged.

Office Hours: 9 a. m. to 5 p. m., and 7 to 9 p. m.; Sundays, 12 to 1 p. m. Offices—133 Linden St., SCRANTON, PA. (Opposite Postoffice)



The Home of the Honesdale National Bank.

ORGANIZED 1836

Progressive Conservative Successful

Will extend every facility that good banking will justify.

Accounts of individuals, firms and corporations solicited.

Correspondence invited

OFFICERS: HENRY Z. RUSSELL—EDWIN F. TORREY PRESIDENT. ANDREW THOMPSON - A. C. LINDSAY VICE PRESIDENT. ABBY-TAST CASHIER

DIRECTORS: HENRY Z. RUSSELL ANDREW THOMPSON EDWIN F. TORREY HOMER GREENE HORACE T. MENNER JAMES C. BIRDSELL LOUIS J. DORFLINGER E. B. HARDENBERG PHILIP K. MURRAY

REPUBLICAN CANDIDATE For COUNTY COMMISSIONER.



Primaries Sept. 30.

I, Ferdinand Kroll, a Republican of the borough of Honesdale, and a supporter of the party, hereby give notice to the voters of Wayne county that I announce myself a candidate for the office of County Commissioner.

PROFESSIONAL CARDS.

Attorneys-at-Law. H. WILSON, ATTORNEY & COUNSELOR-AT-LAW. Office adjacent to Post Office in Dimmick office, Honesdale, Pa.

W. M. H. LEE, ATTORNEY & COUNSELOR-AT-LAW. Office over post office. All legal business promptly attended to. Honesdale, Pa.

E. C. MUMFORD, ATTORNEY & COUNSELOR-AT-LAW. Office—Liberty Hall building, opposite the Post Office, Honesdale, Pa.

HOMER GREENE, ATTORNEY & COUNSELOR-AT-LAW. Office over Reif's store, Honesdale, Pa.

CHARLES A. McCARTY, ATTORNEY & COUNSELOR-AT-LAW. Special and prompt attention given to the collection of claims. Office over Reif's new store Honesdale, Pa.

F. P. KIMBLE, ATTORNEY & COUNSELOR-AT-LAW. Office over the post office Honesdale, Pa.

M. E. SIMONS, ATTORNEY & COUNSELOR-AT-LAW. Office in the Court House, Honesdale, Pa.

PETER H. LLOFF, ATTORNEY & COUNSELOR-AT-LAW. Office—Second floor old Savings Bank building, Honesdale, Pa.

SEARLE & SALMON, ATTORNEYS & COUNSELORS-AT-LAW. Offices lately occupied by Judge Searle

CHESTER A. GARRATT, ATTORNEY & COUNSELOR-AT-LAW. Office adjacent to Post Office, Honesdale, Pa.

Dentists. DR. E. T. BROWN, DENTIST. Office—First floor, old Savings Bank building, Honesdale, Pa.

DR. C. R. BRADY, DENTIST, HONESDALE, PA. Office Hours—8 a. m. to 5 p. m. Any evening by appointment. Citizens' phone, 33. Residence, No. 88-X

Physicians. P. B. PETERSON, M. D. 1128 MAIN STREET, HONESDALE, PA. Eye and Ear a specialty. The fitting of glasses given careful attention.

Livery. LIVERY.—Fred. G. Rickard has removed his livery establishment from corner Church street to Whitney's Stone Barn

ALL CALLS PROMPTLY ATTENDED TO. FIRST CLASS OUTFITS. 75y1

SPENCER The Jeweler

would like to see you if you are in the market for

JEWELRY, SILVERWARE, WATCHES, CLOCKS, DIAMONDS, AND NOVELTIES

"Guaranteed articles only sold."

WHEN THERE IS ILLNESS

in your family you of course call a reliable physician. Don't stop at that; have his prescriptions put up at a reliable pharmacy, even if it is a little farther from your home than some other store.

You can find no more reliable store than ours. It would be impossible for more care to be taken in the selection of drugs, etc., or in the compounding. Prescriptions brought here, either night or day, will be promptly and accurately compounded by a competent registered pharmacist and the prices will be most reasonable.

O. T. CHAMBERS, PHARMACIST, Opp. D. & H. Station, HONESDALE, PA.

German-American Home Treatment.

Men & Women, young & old. It fails to cure a case of Catarrh, I will refund the money. The GERMAN-AMERICAN TREATMENT is a Scientific Combination Selected & Combined out of 5000 Different Drugs, to suit each & every individual case. It positively the Only Cure, no matter whether your ailment or disease may be, acute or chronic, who failed. Write, state your case in strict confidence. Cure GUARANTEED. Address: OLD GERMAN DOCTOR, Post Box 2000, Philadelphia, Pa.

HOTEL ST. DENIS BROADWAY and 11th ST. NEW YORK CITY

Within easy access of every point of interest. Half block from Shopping District. Five minutes' walk of Museum. NOTED FOR: Excellence of cuisine, comfortable appointments, courteous service and homelike surroundings.

Rooms \$1.00 per day and up With privilege of Bath \$1.50 per day and up EUROPEAN PLAN Table d'Hote Breakfast 60c WM. TAYLOR & SON, Inc.