



LIGHT AND SUMMERY.

## Those Pretty Washable Fobs.

Washable affairs seem to be the order of the day, for along with her tub gowns, her parasols which will withstand a thorough drenching and her washable coats, comes another little fancy for midday, and this, too, is warranted to survive the process of vigorous laundering.

It is pretty, this latest novelty, is useful and serviceable, so its success as a summer accessory of the smart, immaculate duck and dimity girl is already an assured fact.

The washable fob, as it is called, displays all manner of miniature belongings characteristic of the sportswoman, and is, for this very reason, eminently suited for summer wear.

Though gilt spurs, stirrup and horseshoes figure prominently on these new fobs, they could scarcely be called mannish, for daintiness saves them from this sad fate. Knowing the summer woman's fondness for things fresh, pretty and immaculate, clever minds have been kept busy discovering and designing novelties which will suit her particular taste, and a genuinely new article is now being offered in place of the usual gold or silver fob, which has lately returned to favor.

It seems such a simple matter to hit upon this practical little accessory, yet it remained for one ingenious feminine mind to originate a device which is bound to please all members of the fair sex.

Decidedly, the washable fob has caught on, and before leaving town for her usual season the summer girl is supplying herself with a generous variety of these little ornaments to match her shirtwaists and summer frocks. Mercantile canvases and fine white plaques are used for most of these attractive fobs, while an air of elegance is secured by having the guard made of white or pale tinted moire ribbon. These more elaborate accessories need not be confined to linen and cotton gowns, for they are pretty with any frock where a fob is suitable.

Buckles in enamel to represent one's favorite college colors are one of the fads. For instance, a pure white moire ribbon, neatly stitched all around and with no ornamentation whatever on the broad lobe, has its narrow pointed strap slipped through a plain gilt buckle enamelled in Yale or Columbia blue. The crimson shows to advantage against a pale buff linen, while a gun metal slide on an orange taffeta ribbon forms the tiger combination.

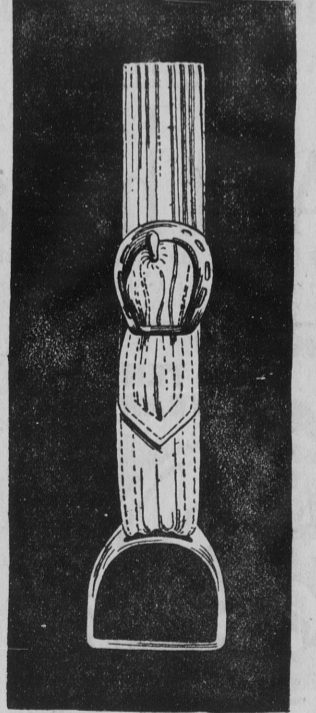
Mourning fobs are made of dull silk ribbon, fastened with gun metal trimmings. There are other decorations newer than and equally as attractive as the above. Even in such

trifles does the approaching coronation show its influence, for one of the smartest fobs presents the trio of graceful plumes surmounting a coronet as its decoration. The design is embroidered in colors on the lobe, and the enamel of the tiny oval slide harmonizes with the shade used for the nodding feathers. The coronet is usually black, and the plumes may be blue, pink, green or red.

When this design is embroidered upon soft mercerized Oxford or lustrous linen the effect is very smart and adds a decided charm to almost any stylish outing dress.

With a Delft blue linen frock one of these watch fobs was worn. It was of white linen, worked in a curious character, either Chinese or Arabic in style, and done in Delft blue silk, with just a touch of black to give it dash. The buckle was blue, too, though another fob of the same style displayed a gun metal slide.

For the sport-loving young woman there are numerous attractive designs in dull gold and enamel.



SUBURBAN.

Instead of the round lobe end, upon which is worked in embroidery pattern in colors, these sporting novelties have stirrups, spurs, bits and crops fastened at the end of the narrow linen strap, while the buckle may be a horseshoe, whip or of the same design as the pendant.

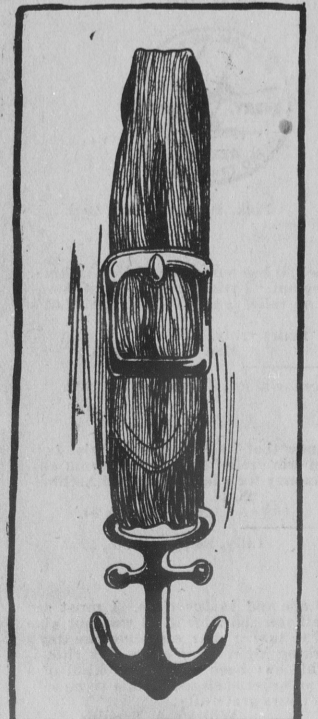
A scarlet linen fob, ornamented with tiny crossed golf clubs, made a pretty little novelty to be worn with a smart golf costume, and a tennis enthusiast will surely choose for her white serge costume a fob of purest white linen, decorated with gilt racquet and ball.

At a ping pong tourney the prize took the form of one of these washable fobs, having its pretty slide made to represent a small vellum racquet and celluloid ball.

To wear with these new watchguards are designed some very pretty belts and stocks to match, and the sets are practical and extremely smart, without being too elaborate.

Some of the stocks are furnished with small bow ties, fastened with fancy slides, and others have long Ascot scarfs, the ends of which are embroidered in the same plume or Oriental design as that seen upon the fob. If there is no metal buckle used upon the bow tie, then just above the knot, on the front of the plain linen or pique stock, is worked one of these attractive ornaments.

Belts to match are scarcely more than an inch wide at the back, tapering gently toward the front, where both pointed ends slip through a plain or fancy buckle.



LARCHMONT.



BY ELISE DEY.

We all know the shirtwaist young woman. Her trimness, immaculate getup and air of dainty freshness proclaim her by far the most attractive feature of outdoor summer life. The splendid color which glows in her cheeks, her movements, lithe and graceful, win our unbounded admiration, while before the dainty harmony of her smart little costume we prostrate ourselves in highest praise.

There are shirtwaist girls and shirtwaist girls, however, but it isn't a difficult matter to recognize those who possess a proper sense of uniformity and dress with a perfect knowledge of shirtwaist requirements.

After much coaching and hard practice the shirtwaist devotee has finally mastered the art of ascots and small bows; the belts, of course, came to her instinctively, but hats—there is where she frequently blunders, either through ignorance or a careless disregard of propriety.

The transgression is unpardonable, nevertheless, and a fussy hat worn with a trim shirtwaist stamps the wearer as badly dressed, no matter how smart may be the rest of her costume.

Since the shirtwaist has grown to be such an important part of the summer wardrobe all manner of pretty accessories have been devised to complete this natty dress. Of all these smart effects none, however, plays so prominent a part as the hat selected to accompany this particular style of gown.

The shirtwaist hat is already a well-known term among feminine belongings, and there are several manufacturers, as well as retailers, who supply exclusively this class of millinery. Not every hat creator is able to build a smart tailor model, for, as with gowns, it is much easier to cover up lines with soft fluffy masses of trimming.

Dashing lines are, however, the one thing needed to make the shirtwaist hat a success, and it naturally follows that much less ornamentation is used for this style than for other models. In contour the tailor hat conforms to the prevailing modes, while the size may be medium or small, according to individual taste.

**Hats Large This Season.** This season the hats are a bit larger than usual, and have a low, flat crown, with a gently rolling brim made most frequently of pure white braid, with a smart haps an ornamentation of dull silk ribbon and, perhaps, fancy steel buckles. The same pendant spring and summer millinery is likewise evident on tailor hats, though usually this

consists of loops and ends of broad velvet ribbon. Turban effects are popular and so are tricorneers, with changes in outline.

Panamas are to be worn to some extent, and the smaller hats are pressed into a fedora shape and trimmed with a two-inch band of black velvet, which ties in a broad black quill, with its simple knot placed in front, just to the left.

Larger styles in this very expensive weave are draped with scarfs, ornamented with smart knots of ribbon and sometimes trimmed with fancy feather rosettes.

Green, in a soft roseola shade, makes a very pretty combination with the yellowish tint of the Panama, and a touch of black introduced in a knot of velvet or long-blade quill gives the hat a decided dash. Rather rough straws, woven in a delicate plaid, say yellow and white beige or brown and white, are effectively trimmed with fancy Tuscan or chrysanthemum braid ornaments, such as cabochons, fringed rosettes, buckles and straps. These modish conceits give the hat a fallowy air, which is appropriately suggestive of its destined use.

The term shirtwaist is no longer restricted to plain starched affairs, and as these smart garments have taken unto themselves many airs and graces, so also have hats which are designed especially to accompany them become less severe and plain than formerly.

One might almost consider the pretty lingerie waist as an elaborate species of this tailor class of apparel, and it naturally follows that a degree more of fussiness in this respect allows of the same departure with regard to the hat.

Plumes, flowers, chiffons and fine laces are certainly inappropriate for shirtwaist hats, for this term includes everything in headwear designed for outdoor sports, morning wear and for any occasion when the simple little waist may be assumed.

There are, however, many pretty little scarfs of fine batiste almost as soft and sheer as mousseline de soie, and these are very good style when twisted about the crown of a flat round tailor hat.

Some of the coarser laces are permissible, but, as a general thing, smarter effects are secured by the use of handsome ribbons, quilts, wings and simple ornaments.

The Frenchwoman chooses chic wings for her equivalent of the shirtwaist hat, and her modish shade of the rough straw will furnish an excellent background for the smart low-lying wings and simple twist of black velvet ribbon. This latter trimming figures upon almost every tailor hat in one way or another, and nine times out of ten



BLACK VELVET MAKES A SMART TRIMMING.



ROUGH STRAW AND SHADD QUILL.

It is tied in a broad bow at the back, with streamer effect.

As the summer advances the shirtwaist hat loses just a bit of its typical severity, rolling and curving gently about the face, with just a suggestion of softness in its trimming.

Women who possess any sense of the fitness of things will readily make the distinction between correct and incorrect hats for wear with shirtwaist costumes, and they will be as particular in this respect as in the selection of the proper hair ornament or gloves to harmonize with a dainty decolette frock.

The first point they will observe, of course, will be that of selecting a becoming style, and then they will bear in mind the importance of obtaining a certain freshness of effect, combined with that indescribable quality called chic.

It is important to choose a hat which has the appearance of being light and cool, and a braid that is not very fine is better style, especially now that rough effects are considered extremely smart. While the hat is, perhaps, of more consequence than any of the many little shirtwaist accessories, these, too, require consideration and careful selection, for the entire effect of the costume may be spoiled by an inappropriate collar or badly fitting belt.

**Wide Choice in Neckwear.** With the vast variety of well-made neckwear at everyone's disposal, there is absolutely no excuse for any woman appearing in unbecoming or passe stocks. Simple ef-

## SUMMER NOVELTIES

### IN NECKWEAR.

In anticipation of the hot summer days to come neckwear designers have been busily engaged trying to devise some effect which will look smart and at the same time stand the severe test of humid weather.

After many unsuccessful efforts a certain manufacturer who caters exclusively to feminine wants has hit upon a novel fashion which no doubt will prove a favorite before June suns have spread their wily rays.

There isn't a question about its success with the fashionable woman who desires comfort above all things, and as this new collar has the advantage of giving one a youthful appearance it begins its existence with much in its favor.

From the small Eton box this progressive designer borrowed his ideas, for he has copied almost exactly the round turtleneck collar which rolls back, leaving the throat exposed in a picturesque fashion.

These collars are made of fine white lawn and dimity, sometimes showing a narrow border of a color, and there are ties to match which are knotted with loose, flowing, Byron-like ends. With summer shirtwaists such collars are very effective and pretty, and certainly they offer enough of a change to insure their popularity.

Considering their great comfort in the matter of coolness they cannot fail to appeal to the majority of the fair sex, though, precisely as was the case last summer with the collarless blouse, the one great drawback still exists. This consists of that ugly disfiguring mark which 99 out of every 100 feminine necks display, and which renders the wearing of the new collar almost an impossibility until some means have been taken to get rid of this unfortunate blemish. Besides the dark line which is the result of high collars and stiff stocks many women, especially those who have passed the age of 25, show a slight shriveled appearance of the skin just where the top of the collar comes. This is due to the tight band worn about the throat, and a neglect of the care of the muscles which surround this part of the neck.

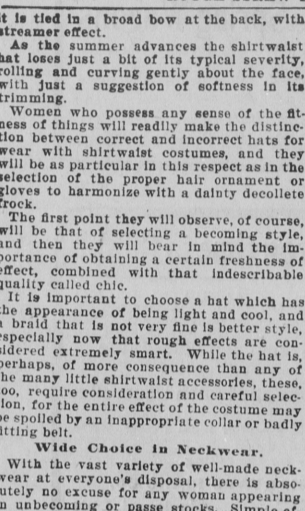
Since low collars are in vogue, it behooves us each and every one to get the neck into a presentable shape for this newest fad, and if the following directions are carefully followed for two or three weeks the brown mark will gradually disappear, while the skin will become firm again.

Lemon juice is about the safest remedy for removing the discoloration, and with an application of this every night, rubbed in gently but thoroughly, a change will soon be noted in the tone of the skin.

In the morning comes the treatment which improves the texture of the skin, and this should be neither vigorous nor long.

First a gentle rubbing of the throat with some good skin food, then a few exercises which call into play the muscles of the throat. If you start right in leaving the neck exposed to the light and air you will find that the skin will very soon assume a healthy appearance, for what it needs most are these very things.

The woman who realizes that it is here on her throat the telltale marks first disclose her age will be eager to overcome this physical tendency.



DINDIGUL.

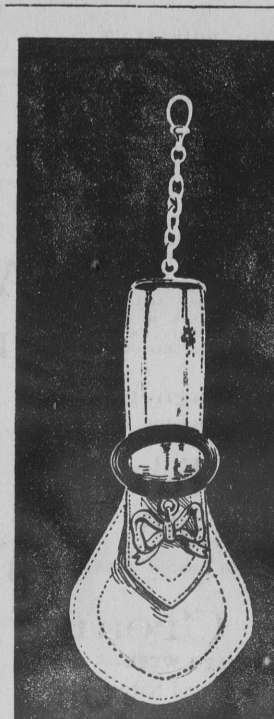
fects go best with the plain starched shirtwaist, and these may match or contrast with the waist fabric. Ascots are always smart and appropriate if well tied, and the pin with which the puff is fastened should, by all means, be of some sporting design—a horseshoe, golf club or any one of the fancy ornaments suggestive of outdoor summer life. Then there are numerous plain and smaller stocks which are very good style, simple to adjust and universally becoming.

Above all things, avoid soft effects, such as lace, chiffon and ribbon stocks, for the cotton waist; reserve these fancy affairs for wear with elaborate blouses, if you must wear them at all.

There are so many lovely little washable scarfs and stocks which look light and cool that there really seems no reason for choosing any other kind. These come daintily embroidered, and are really exquisite enough to accompany the finest of hand-wrought lingerie waists.

Belts are a matter of taste, as well as of figure, for what becomes the slender woman rarely looks well upon her stout sister. By no means have the belt too dressy. Smart, trim bands of suede, washable canvas, pique or plaid open-meshed linen are very pretty, while curious antique buckles, mounted upon inconspicuous ribbons, are always good style, so long as they are not too large and brilliant.

Those broad elastic belts, ornamented with cabochons, have again become popular in Paris, yet they are only half-heartedly received in other fashion centers. However, there are quantities of other styles from which to choose, and one can never make a mistake by avoiding fancy effects, as well as in all other shirtwaist accessories.



DOLLY VARDEN.