



# SPLENDORS OF AMERICA'S GREAT PANAMA CANAL CELEBRATION

## World Noted Sculptors Produce Marvels In the Plastic Art

### Superb Decorative Statuary Fast Assuming Form at the Panama-Pacific International Exposition

**P**RODIGIOUS works of sculpture are now being completed in the sculptural warehouses of the Panama-Pacific International Exposition. Many of them have already long been finished. The works are remarkable for their imagery and vigor and for the beauty of their conception.

Not for many years will the world be enabled to enjoy so marvelous a collection of the works of contemporary sculptors. The World's Columbian Exposition at Chicago first proved that the greatest talent might be employed to produce even work of temporary value. Since then more and more attention has been given to each succeeding exposition to sculpture as a form of decoration, and now the Panama-Pacific International Exposition promises to surpass even Chicago's exquisite display.

Viewing the superb groups and individual pieces of statuary, the visitor feels like a Lilliputian who has been transported into a land of giants. Some of the great groups are of colossal dimensions. Many of these great pieces of statuary will adorn huge triumphal arches and when so placed will seem of natural size to the visitor who stands upon the floors of the exposition courts.

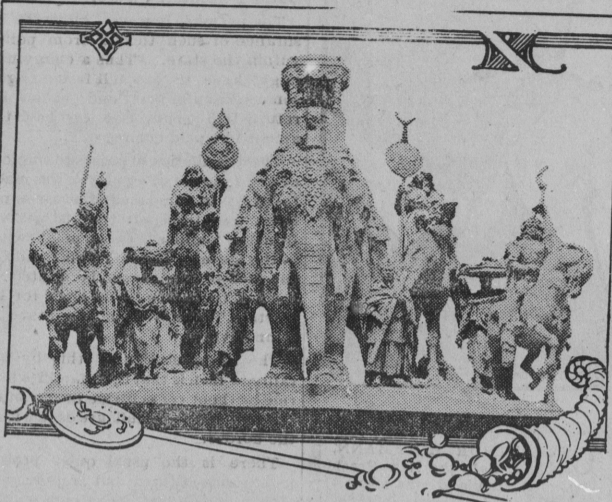
We present upon this page some classical examples of the sketch models and the enlarged figures. A number of America's foremost sculptors have been engaged in the production of these figures. Among the sculptors are many names widely known both in America and abroad. The list includes A. Stirling Calder, acting director of sculpture; Albert Jaegers, Furio Piccirilli, Leo Lentelli, Robert I. Aitkin, Adolph A. Weinman, Isadore Konti, Evelyn Beatrice Longman, Mrs. Harry Payne Whitney, Douglas Tilden, Gutzen Borglum, H. A. MacNeil, James E. Fraser, Charles C. Rumsey, Haig Patigan, Paulanship, F. G. R. Roth, Charles Nelhaus, D. C. French, Herbert Adams and others.

The sculpture of the Panama-Pacific International Exposition will carry out the note of the exposition in celebrating the opening of the Panama canal. The spirit of achievement as exemplified by America's work at Panama will be idealized.

When the sculptors began to plan their work they had as an inspiration an undertaking which has appealed to the imagination of the world for centuries. In the opening of the Panama canal they saw the final result of four centuries of effort to secure a passageway between the oceans. The statuary will reproduce upon a wonderful scale the historic incidents connected with the Panama canal. Figures of the early explorers of the oceans, groups symbolizing the effort to pierce the rocky backbone of the continents, compositions designed to symbolize occidental and oriental themes, colossal representations of struggle and achievement, will illustrate many of the dramatic topics inseparably associated with the search for a passageway to the Pacific and with the final building of the canal at Panama.

In no other exposition has sculpture been employed to adorn the grounds to the extent that it will be employed at the Panama-Pacific International Exposition.

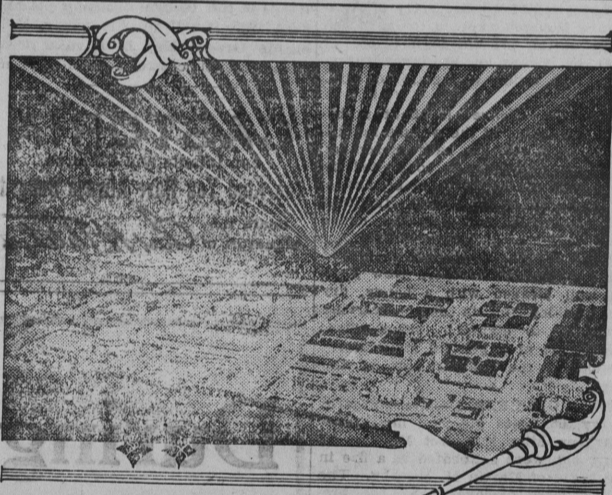
And while the sculptors are fast completing their splendid productions, which reveal the ideals of sculptors of the present day, other work upon the exposition is fast progressing. When the gates of this America's Panama canal celebration, swing open to the world on Feb. 20, 1915, it will be upon a fully completed and perfected spectacle, the setting of the greatest international celebration that the world has ever beheld.



Copyright, 1913, by the Panama-Pacific International Exposition Co. Photo by W. W. Swadley, staff photographer.

### "NATIONS OF THE EAST" AT THE PANAMA-PACIFIC INTERNATIONAL EXPOSITION, SAN FRANCISCO, 1915.

**T**HIS superb group of statuary is a model of the "Nations of the East" which will surmount the Arch of the Rising Sun in the Court of the Sun and Stars at the Panama-Pacific International Exposition at San Francisco in 1915. Reading from left to right, the figures are as follows: 1. Arab Sheik; 2 and 8, Negro Servitors; 3 and 7, Mohammedans; 4, Arab Falconer; 5 (the elephant), India; 6, Tibetan Lama; 9, Mongolian Horseman. The four pedestrian figures are by A. Stirling Calder, the equestrians by Leo Lentelli and the elephant and camel and their riders by Frederick G. R. Roth.



Copyright, 1913, by the Panama-Pacific International Exposition Co. Photo by W. W. Swadley, staff photographer.

### PANAMA-PACIFIC INTERNATIONAL EXPOSITION BY NIGHT.

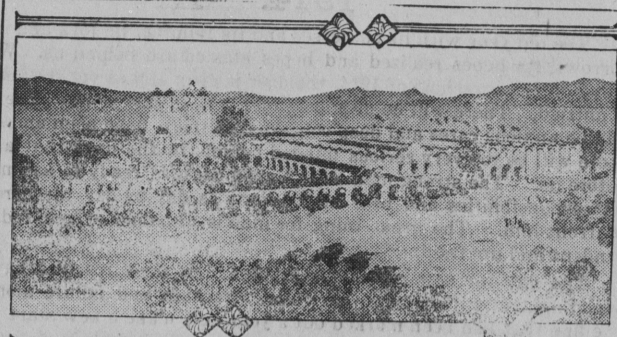
**N**IGHT perspective of the Panama-Pacific International Exposition in San Francisco in 1915. At night giant searchlights will transform the vast exposition city into a fairyland. The lighting scheme is the most remarkable ever planned.



Copyright, 1913, by the Panama-Pacific International Exposition Co. Photo by W. W. Swadley, staff photographer.

### "SUNSHINE" AND "SPRING" AT THE PANAMA-PACIFIC INTERNATIONAL EXPOSITION, SAN FRANCISCO, 1915.

**T**HE large group at the right is "Spring," by Furio Piccirilli, one of the groups in the Court of the Four Seasons at the Panama-Pacific International Exposition, San Francisco, 1915. At the left is "Sunshine," by A. Jaegers, who has created a companion statue, "Rain."



Copyright, 1913, by the Panama-Pacific International Exposition Co. Photo by W. W. Swadley, staff photographer.

### SUPERB CALIFORNIA BUILDING AT THE PANAMA-PACIFIC INTERNATIONAL EXPOSITION, SAN FRANCISCO, 1915.

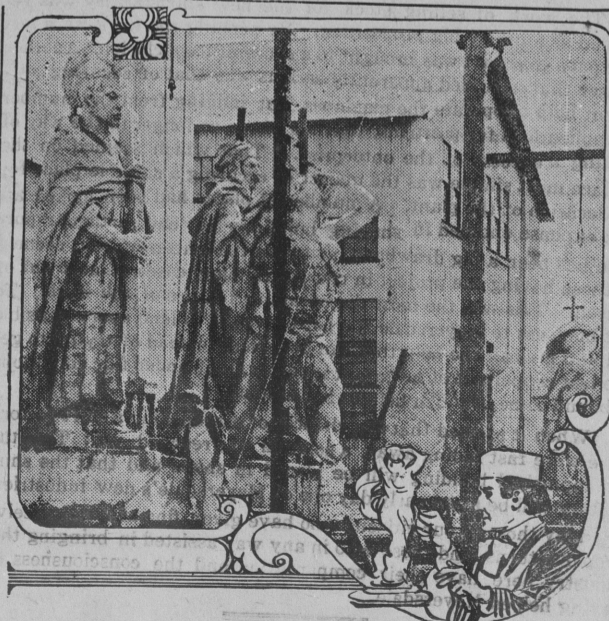
**T**HE California building at the Panama-Pacific International Exposition will not be surpassed by any other structure erected by sister states or by foreign nations in style, in type, in appropriateness and in location. In its architecture the designer has followed the Spanish mission type, which alone is truly typical of California, and has combined in it the recognizable features of many of the different missions built by the early Franciscan friars.



Copyright, 1913, by the Panama-Pacific International Exposition Co. Photo by W. W. Swadley, staff photographer.

### TWO NOTABLE PIECES OF STATUARY AT THE PANAMA-PACIFIC EXPOSITION, SAN FRANCISCO, 1915.

**S**TRIKING examples of the decorative sculpture at the Panama-Pacific International Exposition are shown in these two illustrations. At the left is "Rain," by Albert Jaegers, a figure that will be a companion to "Sunshine," by the same sculptor, ornamenting the Court of the Four Seasons in the main group of exhibit palaces. The camel with its Mohammedan rider is by Frederick G. R. Roth.



Copyright, 1913, by the Panama-Pacific International Exposition Co. Photo by W. W. Swadley, staff photographer.

### SUPERB STATUARY FOR PANAMA-PACIFIC INTERNATIONAL EXPOSITION, SAN FRANCISCO, 1915.

**T**HE illustration above shows some of the colossal works of sculpture to be set in the vast courts of the Panama-Pacific International Exposition at San Francisco in 1915. At the left are figures of a Tibetan Lama and an Arab Sheik which will be in the group "Nations of the East," over the Arch of the Rising Sun in the Court of the Sun and Stars; next is "Sunshine," and at the right is "Rain." A. Jaegers, Furio Piccirilli and A. Stirling Calder are the sculptors.



Copyright, 1913, by the Panama-Pacific International Exposition Co. Photo by W. W. Swadley, staff photographer.

### A MARVELOUS SETTING FOR SCULPTURE AT THE PANAMA-PACIFIC INTERNATIONAL EXPOSITION, SAN FRANCISCO, 1915.

**T**HE dominating architectural feature of the exposition, the superb Tower of Jewels, which will command the south entrance of the Court of Sun and Stars at the Panama-Pacific International Exposition in San Francisco in 1915. This tower, 430 feet in height, will have a base one acre in extent. The tower will rise upward in terraces, giving way at last to a group of figures supporting a globe, typifying the world. The repeated figures of armored horsemen and of explorers of the ocean will be used on the tower, which, with its statuary, mural paintings and mosaics, will be indescribably beautiful. Messrs. Carrere & Hastings, architects in chief of the Pan-American Exposition at Buffalo in 1901, are the architects.