

INDUSTRIAL EDITION OF



GEO. W. WAGENSELLER,
Editor and Proprietor.

MIDDLEBURGH, SNYDER CO., PA., THURSDAY, MAY 11, 1899.

VOL. 36, NO. 19.

AARON J. CROSSGROVE.

This special edition of the "Post" would not be complete without the likeness and sketch of Aaron J. Crossgrove, a painter of more than ordinary skill and ingenuity. Besides being a painter of ability, he is a hardy man on every occasion you need attention to some matter which requires skill. He is also a paper hanger second to none in this section. Always jovial and congenial, he never forgets that he as a citizen is one of the representatives of human kind and as such owes to his fellow beings a just equivalent of time and talent which he never hesitates begrudgingly, but rather prefers to give more than he owes to others than to take anything or overcharge for any work he may do. He is a useful citizen to have in town and those who need his services most understand best the real intrinsic value of his talent. His services are constantly required away from home as well as here, thereby proving that his faithful services are appreciated elsewhere as much as among his neighbors.



AARON J. CROSSGROVE.

stows begrudgingly, but rather prefers to give more than he owes to others than to take anything or overcharge for any work he may do. He is a useful citizen to have in town and those who need his services most understand best the real intrinsic value of his talent. His services are constantly required away from home as well as here, thereby proving that his faithful services are appreciated elsewhere as much as among his neighbors.

JOHN F. STETLER.

The town of Middleburgh has an architect of which it can well be proud. That builder is John F. Stetler. A cut of his residence appears in this issue of the Post. He has won for himself a reputation which speaks better for him than we in a feeble way can portray. The lines that now express his skill are found in the magnificent structures that now stand as living testimonials to his work. The beautiful public school buildings that now stand at Freeburg, Reesville and Milroy, the Lutheran Church at this place



D. A. KERN'S RESIDENCE.

and the one at Salem, this county, the Mifflin County National Bank and the Russel Bank, both of Lewistown, and the large number of beautiful residences scattered over this land are products of his ingenuity. He has built up for himself a very nice trade and since January 1, 1899 he has had on his board no less than 15 buildings. He is an active industrious citizen and is ever ready to encourage all kinds of industries and public improvements. A few more men with the amount of public spirit that Mr. Stetler possesses would make quite a difference in the activity of our town.

BARBER SIMONTON.

Swineford has a new merchant in the person of Barber Simonton, a young man of sterling qualities, who hails from Mifflinburg. He is, however, not a stranger in this village, having resided here for several years prior to this. He bought out the store of C. W. Graybill and proposes to run an up-to-date store. He will close out the shoe branch of his store and will partition off the rear of the store and make an eating room there. This will make an excellent lunch counter and will attract many a customer for a quick lunch or a plate of oysters or a plate of cream. He already has a reputation for making excellent cream and he will do all in his power to enhance that reputation. He is keeping a full line of groceries and will keep a fresh supply always on hand. He believes in judicious advertising and hence the people in this vicinity will know what he has to offer. We predict for him a brilliant and successful future.

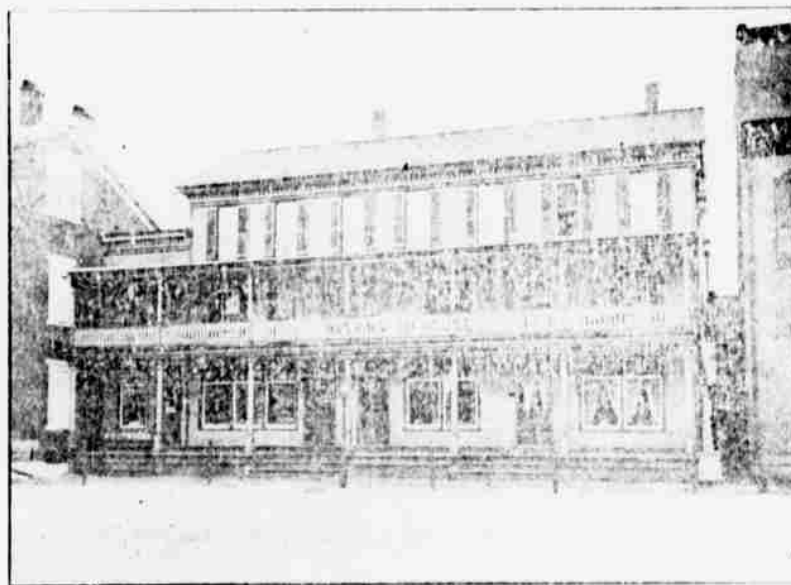


EVANGELICAL LUTHERAN CHURCH, MIDDLEBURGH, PA.

MIDDLEBURGH.

is the county seat of Snyder County, is located in the center of the county 19 miles west of Selinsgrove, the metropolis of the county. The town is 22 miles from Lewistown Junction, the connecting point for the fast trains west and east and 11 1/2 miles from Selinsgrove Junction, 13 miles from Sunbury where connection can be made for fast trains East, North, South and West. Our beautiful town is located only 60 miles from Harrisburg the capital of the state of Pennsylvania, the same distance from

seven miles from Reading and as early as 1882 John Swineford had a trolley line. The lots were sold subject to a ground rent of one dollar per acre forever. Middleburgh was Center township until the erection of Franklin township in 1876 and remained part of Franklin until 1894 when a charter of incorporation was secured for the borough. It lies in the heart of Middlebrook Valley, which abounds in the most fertile soil and is peopled by prosperous and sturdy farmers who are above the ordinary intelligence. The town has 3 hotels, a bank, five



WASHINGTON HOTEL.

Williamport and 165 miles to Philadelphia the metropolis of the state and one of the oldest settlements on the American Continent. Middleburgh was laid out in 1809 on the South side of Middlebrook on the land of John Swineford and the Penna. German name to this day is Swineford Stetle. The survey of the town plot was made by Frederick Evans, a prominent man in his day and the father-in-law of George Kremer, at one time the Congressman from this district. In 1801 a number of lots were sold. At the time the town was laid out there were

large General Stores, 10 Confectionery and Grocery stores, two newspaper, a tailor, an architect, several painters and paper hangers, 3 soldiers, six attorneys, a bakery, 3 Blacksmith Shops, a Shoe store, a Furniture Store, a meat market, a Drug Store, a music store, two Harness shops, a stove and tin Business, two millinery stores, two Coal and Grain Dealers, A Grist Mill, a distillery, a bottling works, a machinist, a Dentist, two Doctors, Several music teachers, four churches, Graded Schools, a jewelry Store, 4 livery Stables, A lodge of Free and accepted Masons, A camp



CHAS. A. MEISER.



CALVIN STETLER.

of Sons of America, a Grand Army Post, Telephone Exchange, Post Office, Several Stone Masons. Quite a number of carpenters, Two Barbers, an insurance office, three justices of the Peace, a notary Public, a pension board, A Plumber, a Planing mill, a brick yard, quite a number of lime kilns, a kerosene supply station, two bark and mining tie markets, a county superintendent, Eight College students, quite a number of college graduates, a few money lenders, the court house, the county jail, a historical society, a graveyard, two undertakers, a dealer in farming implements, a store keeper, grand gauger, several school teachers,

residences, that are a credit to the town. The people are hospitable and entertaining and will throw wide open the doors to receive any new industry that may propose locating here.

W. B. WINEY.

For 14 years Wilson B. Winey has been in the coal and grain business in this place. Born and raised in the vicinity of Richfield, in West Perry township, this county, he moved to this place and became one of the citizens and became a part of the community. He has been an important factor in the development



W. B. WINEY.

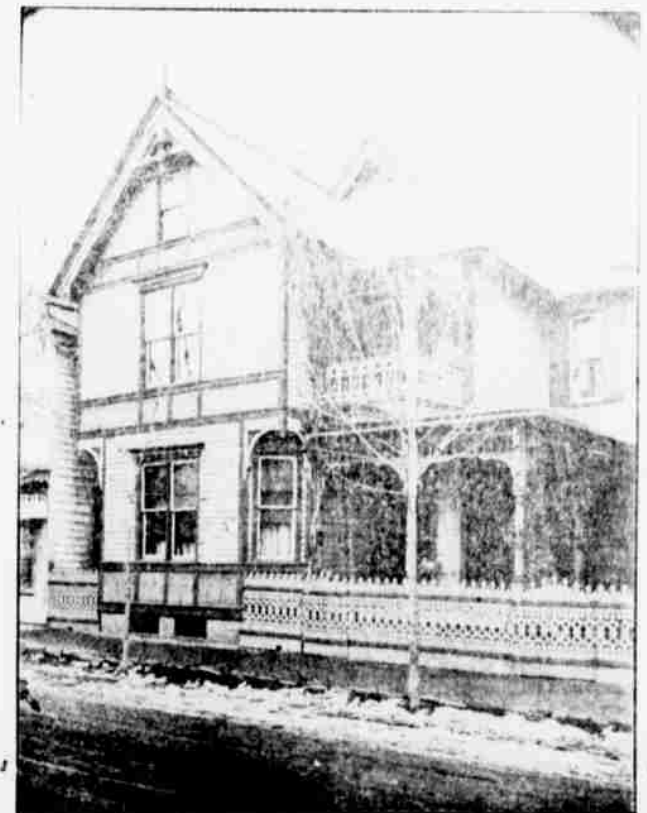
a telegraph office, an express office, a freight depot, a Passenger Station, a poultry market, a cornet band, an ortho-train and above all will soon have a shoe factory.

Four passenger trains arrive daily and leave daily, all of which carry mail. Three stage and mail carriers arrive and leave daily one from Freeburg, one from McKees Hall Hill and Richfield and intervening points, and one from Mifflinburg, New Berlin and intervening points. The town is in a healthy location where living is cheap. There could be no better place to establish an industrial concern than in Middleburgh. Rents are low and labor is not employed regularly, hence those who are seeking new locations for their industries will find a great saving in the cost of labor by moving to Middleburgh. The Middlebrook will afford cheap water power in case any one desires that kind of power. The employees could run for less money and live for less money here than any where else and hence can afford to work for lower wages. The town is adorned with quite a number of handsome private

of its interests and stands as an active supporter and one who will encourage industries to locate in our midst. He also deals in bark, shipment in that alone along the S. & E. Railroad average 100,000 tons a year. By Railroad ties he has a large trade and in one year he shipped to the Lehigh Valley R. R. Co. 212,000 ties. Making ties is also a large branch of his business. His coal and grain business is very extensive and involves the handling of large sums of money. It is a very full commercial business man who commands the highest respect of all who know him.

Notice

Owing to the large number of illustrations and sketches and found history, it has been necessary for us to put a great deal of hard news, some advertisements and some sketches on the inside pages of this week's Post. Unfortunately also some news and advertisements had to be entirely omitted. All these matters will have our attention in our next issue.



DR. J. W. ORWIG'S RESIDENCE.