

T. H. HARTER, Editor and Proprietor.

NOTICE TO SUBSCRIBERS.

Look at the figures on the label of your paper. Those figures tell you the date to which your subscription is paid. Within 3 weeks after money is sent, see if date is changed. No other receipt is necessary.

Thursday, August, 2 1888.

For President
BENJAMIN HARRISON,
For Vice President
LEWIS MORTON,
of New York.

Judiciary.

For Supreme Judge,
JAMES T. MITCHELL, of Philadelphia.
Associate Judge,
HENRY BROWN.

County Ticket.

Congress
A. W. FISHER,
Senator,
D. BOLENDER.
Probationary
W. W. WITTEMYER,
County Recorder,
HENRY J. DUCK,
District Attorney,
H. E. MILLER, Jr.,
Jury Commissioner,
Z. TAYLOR GEMBERLING.

Republican Standing Committee.

Adams—Henry Tobias, Tobias Mitchell,
Beaver—W. F. Fisher, C. F. Spacht,
Centre—W. H. Napp, R. H. Walter,
Chapman—Simon Long, Geo. Troutman,
Franklin—Chas. Roderick, Jacob Hassinger,
Jackson—W. S. Shultz, J. S. Yeats,
Middleburgh—J. M. Stimmer, Wm. Bonnie,
Middletown—H. E. Keller, J. Mitchell,
Monroe—T. P. Hummel, W. M. Gardner,
Penn—G. W. Wintner, Isaac Row,
Perry—W. H. Heeling, H. F. Robinson,
Perry West—J. C. Strasser, J. N. Willie,
Selinsgrove—M. F. Waggoner, S. F. Simpson,
Spring—E. L. Manbeck, G. P. Reagle,
Union—John D. Hagar, J. H. Herold,
Washington—E. W. Todd, G. A. Biddorf.

Written for the Post.

The Old English Tariff Policy.

The old English system of tonnage and poundage laws, of protective tariff, and of commercial regulation was severely in her own favor. It embraced over four hundred Acts of Parliament, and was administered without respect to the rights of any other nation, but solely for her own industrial and commercial welfare. She did not hesitate to make her tariffs prohibitive, nor to directly prohibit the exportation of articles which might teach inferior nations the skill of her own. There is no record of a protective system so selfishly woven, and so tyrannically administered as hers, if we except the absolutely exclusive and despotic system of China; nor of one so persistently sustained till it gave her the manufacturing and commercial supremacy she courted. This point reached, as to commerce by 1825, and as to manufactures by 1846, she resorted to a change of policy. Let us see how she protected her iron. From 1782 to 1795 the duty on foreign bar iron was over \$12 per ton. In 1791 it was over \$14; from 1798 to 1802 over \$15; from 1806 to 1808 over \$23; from 1810 to 1812 over \$24; in 1818 over \$28. By 1825 it was \$6 10c. per ton if imported in British ships, and \$7 18c. 6d. if imported in foreign ships. Other manufactured iron paid £20 (\$90) per ton; and iron not otherwise enumerated paid £50 for every £100 worth imported.

All of these rates were not only protective, but prohibitive, and they serve as an index to the policy which prevailed as to other industries which she designed to foster.

MODERN ENGLISH TARIFF POLICY.
The change from protection of the most studied and persistent kind to a policy of free trade came, after the former had given her wealth and a mighty reserve capital, multiplied her industries, fostered inventive skill, carried her fabrics to perfection, and enabled her to dominate the markets of weaker, and less skillful, wealthy and independent nations. "Her own markets for her own wares," was the motto so long as they were in danger of competitive invasion by others.

England became free trade all through, and immediately set up to indoctrinate the world with her newly assumed and selfish dogmas. Her Cobden Club, an association of British noblemen, was formed in 1866. Its avowed object is interference with the protective policy of newer, weaker, and less favored nations, and their conversion to English free trade notions not content with arguments scattered abroad in tracts and books, this club, which counts among its numbers, 200 members of Parliament and 12 of the 14 Cabinet ministers, has established agencies in different parts of the United States, for the purpose of operating directly on our politics, especially in congressional districts. In its issue of July 16, 1888, the London Times said: "It is to the New World that the Cobden Club is chiefly looking

as the most likely sphere for its vigorous foreign policy. It has done what it can in Europe, and it is now turning its eyes westward and bracing itself for the struggle which is to come. "IT CANNOT REST WHILE THE UNITED STATES ARE UNSUBDUED." What interest has the Cobden Club in the United States? Does that body love our American laborer? Do they seek to enhance his interests? Or do they work in the interest of England. The Cobden cares little for American industries but she loves her gold. If the Cobden Club should succeed in their enterprise would it not benefit England and would not England's gain be America's loss? This seems reasonable. We trust that the influence of this organization, which seeks the destruction of America's industries may never extend to this side of the Atlantic.

BRITISH COLONIAL TARIFF POLICY.

Tariff, prohibition, or general, was the wedge which forced colonial America from her British allegiance. England as well as other European nations discouraged all attempts to manufacture such articles in the colonies as could be provided for them by the mother country. An Act of Parliament in 1850 prohibited as a common nuisance the erection of any mill in America for slitting or rolling iron. So the making of nails in Pennsylvania was prohibited.

After the invention of the puddling furnace and rolling mill by Henry Cart, we find English statutes (1785) prohibiting the exportation of tools and utensils to foreign parts, the migration of workmen skilled in manufactures, and (1899) even of colliers who mined her coal. The first complete rolling mill in America, erected at Plumoseck, Fayette county, Pa., for Col. Isaac Menon, was built and started by two Welshmen, Thos. and George Lewis, who came under the head of British skilled iron-workers, and as such were compelled to "smuggle" their passage across the Atlantic. We are all more or less familiar with the English methods of exacting revenue from her American colonies, by Tea Acts, etc. etc. They were but a part of that stupendous system of home protection and foreign discrimination which enriched England and built up her manufactures and commerce at the expense of other nations. By no act or thought did she encourage agriculture in America, though she seemed to know that this country would become her granary. No sooner was this proved under the auspices of independence and in the midst of circumstances she could not control, than she set about to build up rival markets in other, and newly planted, colonies. How well she has succeeded in India and Australia ought to appear clear from the fact that her wheat supply from these two sources for 1883-4 so nearly equaled her demands as to leave our splendid surplus of 80,000,000 bushels almost untouched, or subject to a tardy movement at ruinous figures.

A VOTER.

MARRIED.

At the bride's home in Middleburgh, Pa., by Rev. Spayd, on July 29, Geo. Layton, and Alice Buffington.

In Middleburgh, July 26, by S. S. Schoch, J. P., Frank McQuinn of Mehl., and Miss Turie Keen of Milton, Pa.

July 21st at Middleburgh, by Rev. S. P. Orwig, Geo. Troutman and Alice A. Forney.

July 22nd at Middleburgh, by Rev. S. P. Orwig, Henry D. Mowrey and Mary J. Renninger, both of Snyder county.

VALUABLE REAL ESTATE AT PUBLIC SALE!

The undersigned, agents for the heirs of Benjamin Wittenmyer, late of Franklin township, Snyder county, Pa., dec'd, will expose to Public Sale on the premises 1/2 mile south of Middleburgh, on

Saturday, August 25, '88.

The following valuable Real Estate to wit: TRACT NO. 1. All that certain messuage or tract of land situate in township, county and State aforesaid, containing

42 Acres, more or less, bounded North by land of John H. Arnold, East by John Montz and George Kern, South and West by George Kern and Samuel Walter, on which is erected a GOOD FRAME HOUSE, FRAME BANK BARN, and other out-buildings, good Fruit and a never-failing well of water on the premises. TRACT NO. 2. Being a

House and Lot 1 in the town of Franklin, a desirable location and splendid buildings, good fruit, and a well of never-failing water, situate on street leading to Middleburgh.

Sale to commence at 1 o'clock, P. M., when due attendance will be given and terms made known by

JOHN WITTEMYER, Agents,
L. M. MOATZ.

BOARDING HOUSE.

The undersigned having made ample preparation for the accommodation of the public would respectfully announce that he will furnish boarding and lodging at the rate of seventy-five cents a day or twenty-five cents a meal, stabling and feed for horses furnished cheap. Those not having tried his table are respectfully invited to call, and they will not go away dissatisfied. Rooms a few doors west of the Court House, Middleburgh, Pa.
GABRIEL BEAVER, Proprietor.

PAINE'S CELERY COMPOUND
THE CELEBRATED NERVE TONIC.

A Word to the Nervous You are painfully aware that you have nerves? Then you are sick. A healthy boy has as many as you, but he doesn't know it. That is the difference between "sick" and "well." Why don't you cure yourself? It is easy. Don't wait. Paine's Celery Compound will do it. Pay your druggist a dollar, and enjoy life once more. Thousands have. Why not you?
WELLS, RICHARDSON & CO., Proprietors, Burlington, Vt.

The Piper Breech-Loading Shot-Gun and Rifle Combined.

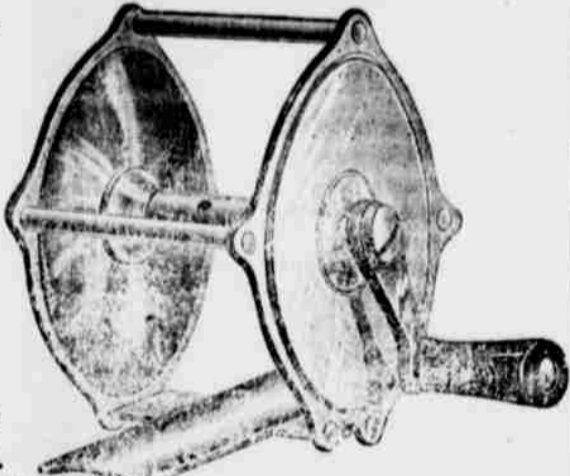
This system in combined rifle and shot-gun offers advantages over other makes even more marked than those for shot only. They far excel all others in strength, accuracy, workmanship and balance.



PRICES Side-snap action, best de-carbonized blued cast-steel barrel, 10 or 12 gauge shot, 44 Winchester. f. rifle cartridge weight 10 to 12lbs, price \$30 Top-snap action, same as above, 38-55 Ballard cartridge, or 44 Winchester, price \$36 The above prices include 100 paper she and one box of cartridges.

FISHING-TACKLE!

A Complete Assortment of Rods, Flies, Reels, Lines, Hooks, Artificial Bait, ect.



I respectfully submit to you a few prices Assorted Trout-flies at 25c. a dozen, tr. out-hoks to gu 25c. per doz., plain trout hooks 5c per doz. best oiled-silk lines from 2 to 3 cents per yard, all other lines from 1 to 2 cents per yard. Reels from 25c to \$2. Orders by mail promptly attended to.

J. B. Reed, Sunbury, Pa.

TEACHERS' EXAMINATIONS FOR 1888. Examinations for teacher's certificates will be held in the several districts of Snyder County as follows: West Beaver, at McClure, July 23. Spring, at Adamsburg, July 24. Adams, at King's S. H., July 25. Beaver, at Beavertown, July 26. Middleburgh-Franklin, at Middleburgh July 27. Eventide (Ind.) at Eventide, July 30. West Perry, at Cross Roads S. H., July 31. Perry, at Fremont, Aug. 1. Chapman, at Rohrer's S. H., Aug. 2. Union, at Port Trevorton, Aug. 3. Washington, at Treowburg, Aug. 4. Monroe, at Shamokin Dam, Aug. 6. Jackson, at Kratzville, Aug. 7. Penn. at Salem, Aug. 8. Middletown, at W. Lee's S. H., Aug. 9. The examinations will begin at 8:30 o'clock a.m. Persons under 17 years of age will not be examined. Private examinations will be given only in accordance with the school laws. Applicants must be examined in the district in which they intend to teach. Persons who make No. 1 in any branch will be exempt from examination in that branch next year. This year's list from 1 to 5. Teachers who barely passed last year should have made notable improvements. Directors.—The certificate is to a certain extent a criterion of the teacher's worth. Applicants who have an average of 24 to 25, must be employed at the risk of the school board, which employs such applicants. Aside from the certificate, directors would do well in noting points such as these: character, business qualifications, industry, habits, nature of the school, &c. Teachers should be selected on merit. It is expected that directors will attend the examinations. All friends of education are invited. I will hold a Normal term of four weeks at Middleburgh, commencing Aug. 20. The annual Institute will meet at Middleburgh during the week commencing Nov. 26, '88. C. W. HERMAN, Co. Supt.

PENNSYLVANIA RAILROAD. SUNBURY & LEWISTOWN DIV. Time Table, in effect May 15, 1888.

Table with columns: WESTWARD DIS., STATIONS, EASTWARD. Rows include Lewisport, Main Street, Lewisport, Maitland, Painter, Shingle, Wagner, Metlora, Raub's Mills, Adamsburg, Beavertown, Hunter, Middleburgh, Meiser, Kresner, Pawling, Selinsgrove, Selinsgrove J., Sunbury.

Selinsgrove Accommodation (Connecting with train on N. C. Ry.) Leave Selinsgrove. Arrive at Selinsgrove. 9:30 A. M. 10:02 A. M. 1:40 P. M. 2:03 P. M. 6:03 P. M. 5:30 P. M.

Trains Leave Lewistown Junction: 12:14, a. m. 5:04, a. m. 10:46 a. m. 6:28, p. m. 6:23 p. m. For Pittsburgh and the West. 7:45 a. m. 9:34 a. m. 1:47 p. m. 4:38 p. m. 8:31 p. m. 11:14 p. m. For Philadelphia, New York, Baltimore and Washington.

Philadelphia & Erie R R Division, AND NORTHERN CENTRAL RAILWAY.

Trains Leave Sunbury: 4:10 a. m. For Bellefonte, Erie and Canadagua. 9:53 a. m. For Lock Haven. 12:52 p. m. For Bellefonte, Kane and Canadagua. 8:30 p. m. For Renovo and Watkins. 5:25 a. m. For Catawissa and Hazelton. 5:25 a. m. 9:55 p. m. and 5:35 p. m. For Wilkesbarre. 6:55 a. m. 11:20 a. m. 5:40 p. m. For Shamokin and Mount Carmel.

Trains Leave Selinsgrove Junction: 9:53 a. m. arriving at Philadelphia 3:15 p. m. New York 9:25 p. m. Baltimore 6:45 p. m. Washington 5:55 p. m. 1:55 p. m. arriving at Philadelphia 6:50 p. m. New York 9:25 p. m. Baltimore 6:45 p. m. Washington 7:55 p. m. 7:57 p. m. arriving at Philadelphia 4:25 a. m. New York 10 a. m. Baltimore 5:15 a. m. Washington 6:25 a. m.

Trains also Leave Sunbury: 2:50 a. m. arriving at Philadelphia 8:25 a. m. New York 11:30 a. m. Baltimore 8:15 a. m. Washington 9:30 a. m. J. H. WOOD, Gen'l Pass Agent. CHAS. E. PUGH, Gen'l Manager.

Middleburgh Market

Table listing market prices: Butter 14, Eggs 14, Pitted cherries 3, Unpitted 3, Blackberries 3, Raspberries 3, Onions 40, Lard 9, Tallow 4, Chickens per lb. 6, Turkeys 8, Side 8, Soule 10, Ham 14.

ARE YOU A MAN

of keen perceptive faculties, and are you

A COMPETENT JUDGE

of good and stylish clothing? If so let me prevail on you to call at my store and look over my

Summer Stock.

It is made up of the choicest and most desirable selections that it has ever been our good fortune to secure and has been bought under the most favorable conditions that ready money can control.

Cash is a Wonderful Lever

in upsetting high prices, and we have used it well. Our

Customers Reap the Benefits

Call at once, G. C. GUTELIUS, Middleburgh, Pa.

1888. Spring and Summer. 1888.

We are now prepared to show you an immense variety of

Seasonable

Dry Goods, Notions, Groceries, &c

In Dry Goods we have an elegant line of Combination Suitings, Ladies' Cloth, Satines, A Variety of Wash Dress Goods. Scotch Zephyr Cloth, Century Cloth, New Calicoes, White Dress Goods.

An Elegant Line of Cassimeres, Laces, and Embroideries. First-class Groceries! SCHOCH BROS., Selinsgrove.

Stylish and Well Made Clothing

I still continue in the Merchant Tailoring business with rooms in Eby's Corner, Selinsgrove, Pa.

and take this means of informing the people of Snyder county, that I have on hand a well selected stock of Cloths, Cassimeres, etc.,

and samples from the best and most reliable New York and Philadelphia houses, and will sell lower than ever. Cutting, Cleaning, Repairing, Dyeing and Scouring done on short notice. Nov. 1st. E. E. BUCK

SPRING GOODS

Freidman & Getz's, Beavertown Pa.,

We have just returned from Philadelphia and New York with a new stock of goods, embracing

A Full Line of Dry Goods, Summer Dress Goods, Quilts, Linen Table Cloths, Lace Embroideries, Lace Curtains,

NOTIONS, JEWELRY,

Watches, Clocks, Silverware, Glassware, Queensware also a full line of ready-made

CLOTHING,

SHOES, GROCERIES, &c. We have our store well-fitted, and request the people to come and see us. We are thankful for past favors and request our friends to continue their patronage. We sell cheap for cash or country produce.

Hardware!

For a Superior grade of shelf and heavy Hardware it is always best to go to old and reliable houses who have a reputation to sustain. Such is

J. B. Selheimer, Lewistown, Pa.

Iron, Nails, Steel, Leather, Paints, Oils, Coach and Saddler Ware. Manufacturer of Stoves and Tinware.