

THE LEADERS FOR 1915

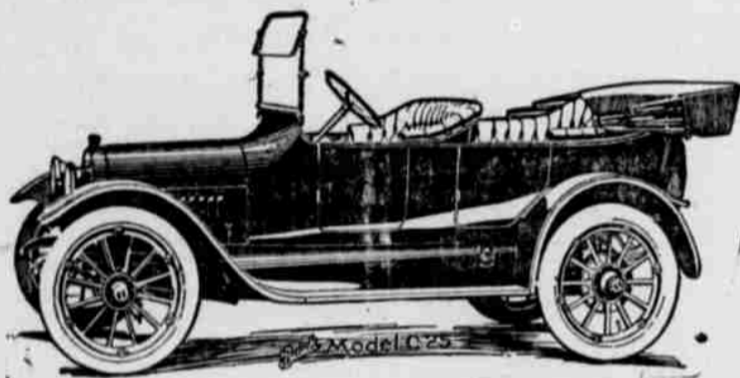
BUICK, MAXWELL AND OVERLAND

ALL SOLD BY

R. M. CLINE, McConnellsburg, Pa.

The Cline Garage.

At an expenditure of several thousand dollars, I have constructed a garage that for architectural design, safety, and comfort of tourists is seldom found in towns, even of much larger size. It has a frontage on the Lincoln Highway of 40 feet and a depth of 110 feet; it is four stories in height including the basement, near the leading hotels, and is constructed of concrete reinforced with steel. It is heated throughout by steam, and especially adapted to housing cars in cold weather.



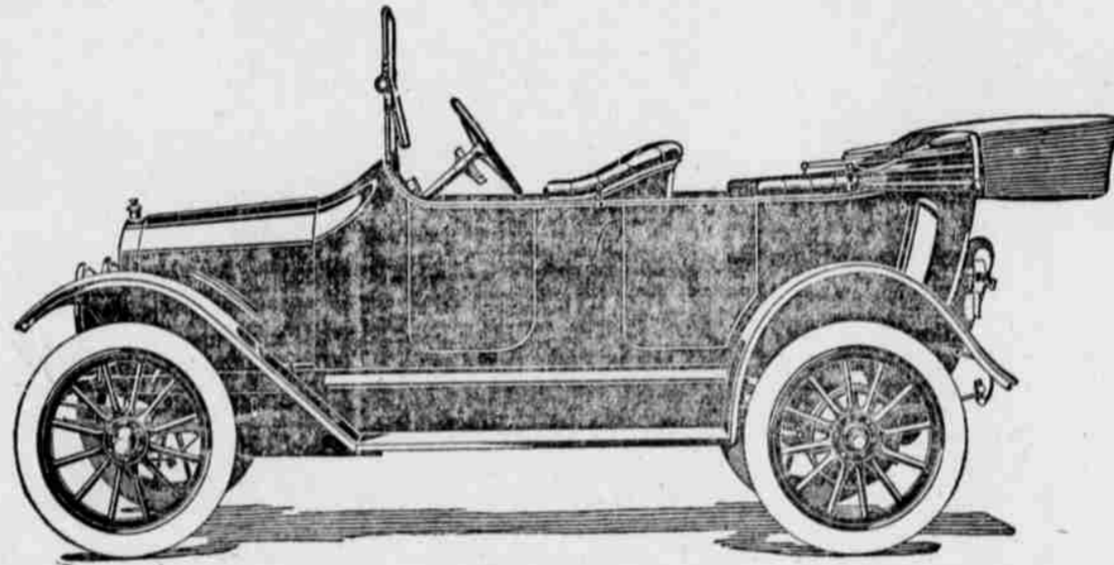
This Buick For \$950.

We are fortunate in securing the agency for this splendid line of Cars. The Buick line of fours and sixes for 1915 is the greatest the Buick Organization has ever built and comprises five models, built on three Chassis; and while the same characteristics and features are largely general in the construction of each, yet enough variation is provided to satisfy the requirements of every buyer and give him the choice of a Buick to fit his individual needs, in either the four or six-cylinder types.

The Buick Valve-in-Head motor is guaranteed to have more speed, more power and to be more economical in fuel consumption than any other type of motor ever built. The Buick was one of the first cars to enter Fulton county territory, and its record for service on our roads is evidence of its durability. Call at the garage for a demonstration.

Free Air! Free Water!

Automobile tourists are requested to note that the CLINE GARAGE is on the map, and they are cordially invited to "blow in" and have their flat tires inflated with air full of Fulton County ozone that seldom causes a blowout, and their radiators filled with pure mountain water free from any germ with teeth strong enough to gnaw a hole in a copper pipe.



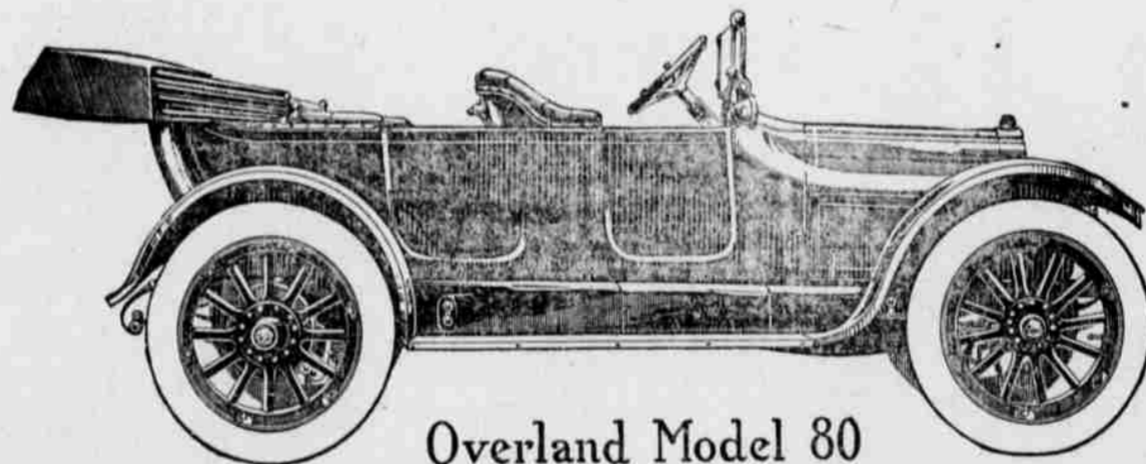
MAXWELL, \$695

The New 1915 Maxwell is the biggest automobile value ever offered for less than \$1,000. The production of 60,000 cars makes the new price of \$695 fully equipped, with 17 new features, possible.

Here are the 17 New Features

- | | |
|--|---|
| 1. Pure stream-line body | 13. Head lights braced by rod running between lamps. |
| 2. Adjustable front seat. | 14. Famous make of anti-skid tire on rear wheels. |
| 3. Sims high-tension magneto. | 15. Gracefully rounded, double-shell radiator equipped with shock absorbing device. |
| 4. Three-quarter elliptic rear springs. | 16. Instrument board, carrying speedometer, carburetor adjustment, and gasoline filler. |
| 5. Tire brackets on rear. | 17. Improved steering gear; spark and throttle control on quadrant under steering wheel; electric horn button mounted on end of quadrant. |
| 6. Spring tension fan. | |
| 7. Kingston carburetor. | |
| 8. Clear-vision wind shield. | |
| 9. Foot-rest for accelerator pedal. | |
| 10. Tail lights, with license brackets attached. | |
| 11. Gasoline tank located under dash cowl. | |
| 12. Crown fenders with all rivets concealed. | |

Electric Self-Starter and Electric Lights \$55 Extra



Overland Model 80

Overland Model 80 Five-Passenger Touring Car

Price \$1075

The satisfied users of this beautiful car in Fulton County are its most enthusiastic advertisers. It contains all the class and style--all the elements of power and durability--of the high priced car, and yet is within the reach of the conservative buyer.

Note Its Specifications:

- | | |
|---------------------------------------|---|
| Motor, 4 cylinders, cast singly. | Full streamline body. |
| Bore, 4 1/2 inches. | Floating type rear axle. |
| Stroke, 4 1/2 inches. | Electric starting and lighting. |
| 35 Horsepower. | Left hand drive. |
| Wheelbase, 114 inches. | Finish, Brewster green with ivory striping. |
| Tires, 34x4 inches, demountable rims. | |

Used Cars.

I will have from 12 to 16 Ford Cars, slightly used that I am taking in exchange from persons wanting 3-speeds cars. These cars I will sell at a bargain. No reasonable price will be refused.

Supplies and Accessories.

You will find in this garage the usual line of automobile tires, tubes, oils, greases, gasoline, and other supplies needed by the tourists.



Overland Model 81

OVERLAND, Model 81

Five-Passenger Touring Car

Price \$850.

Electric Lighting and Starting.

This is a great big car in everything but price. Read the following specifications and you will be astonished that so much automobile can be purchased for so little money. Are you from Missouri? If so, come around!

- | | |
|--------------------------------|--------------------------------|
| Motor: 4-cylinders cast singly | Bore, 4 inches |
| Stroke, 4 1/2 inches | 30 Horsepower |
| Wheelbase, 106 inches | Tires, 33x4 |
| Demountable rims | Full Streamline body. |
| Floating type rear axle | Electric Starting and Lighting |
| Left hand drive | Finish: Brewster green |

Repair Work.

The garage is equipped with the necessary appliances for doing speedily and satisfactorily all ordinary repair work. Our mechanics are skilful and reliable, and our charges not beyond the bounds of reason. If you are unfortunate enough to need the services of the repair man, we can take care of you, whether out on the road or in our garage.