

REPUBLICAN NEWS ITEM.
CHARLES L. WING, Editor.
 Published Every Thursday Afternoon
 By The Sullivan Publishing Co.
 At the County Seat of Sullivan County,
 LAPORTE, PA.
 W. C. MASON, President,
 THOS. J. INGHAM, Sec'y & Treas.
 Entered at the Post Office at Laporte, Pa.
 second-class mail matter.

A Dover editor suggests that, because of the appearance of the 34-inch "Merry Widow hat" and the 27-inch "Merry Garden or Flower Garden hat" that the custom of forty years ago, when all the women were obliged to sit on the right side of the church and all the men on the left of the center aisle, be returned to. This, it is contended, is the only salvation for the continuance of the attendance of men at a public worship and the only assurance that their souls will be saved.

Mechanical cow milkers are in operation at State College this spring. These mechanical milkers are operated by a vacuum pump, which in the State College experiment was run by an electric motor. Each machine milks two cows at a time into a bucket. In the operation of the milker a tread power or gasoline engine can be used quite conveniently.

Full blooded Rhode Island red roosters for sale also eggs.
 Eliza Battin, Shunk Pa.

SHERIFF'S SALE.

By virtue of a writ of Alias Fi Fa. to me directed and delivered, there will be exposed to public sale, at the Court House in Laporte, on

FRIDAY, MAY, 22, 1908,

at one o'clock p. m., the following real estate situate in the Township of Cherry, County of Sullivan and State of Pennsylvania, bounded and described as follows:

BEGINNING at a post in the warrant line of Peter Story, a corner of (formerly) Lewis Martin's thence North, 30 degrees East, along said warrant line, 71 perches to a corner of land formerly occupied by Patrick Redding; thence by said Redding, South, 59 degrees East, 103 perches to a post corner of Redding's clearing; thence South, 80 degrees East, by Redding's, 50 perches to the line of (formerly) Thomas Kennedy; thence by his line, South, 12 degrees West, 12 perches to a hemlock; thence by the line of same, South, 78 degrees East, 30 perches to an ironwood corner of (formerly) T. Bergan; thence South, by said Bergan, and Thomas Kennedy, 12 degrees West, 70 perches to a bench in the line of (formerly) Patrick Dempsey; thence by his line, North, 78 degrees West, 36 perches to a sugar tree corner of Lewis Martin's thence by their line, North, 10 degrees East, 40 perches to a beech corner; thence by said Martin's line, North, 80 degrees West, 152 perches to the place of beginning.

CONTAINING Fifty acres and 140 perches of land, be the same more or less.

ALSO another lot, piece or parcel of land adjoining the lot last described, in Cherry Township, Sullivan County, Pennsylvania, bounded and described as follows:

BEGINNING at a sugar tree in the line of land above described, thence by the same North, 10 degrees East, 40 perches to a corner thence by the same North, 80 degrees West, 40 perches to a birch; and thence by lands of Lewis Martin's South, 33 degrees East, 56 & 10 perches to the place of beginning.

CONTAINING Five acres of land, be the same more or less.

The above two parcels adjoining and being one farm containing in all Fifty-five acres and 140 perches, be the same more or less. And being the same land conveyed to Joseph P. Harney by Edward Harney, by deed dated November 2, 1899, and recorded in the Recorder's office of Sullivan County, at Laporte Pa., in deed book No. 28, page 15 etc.

All improved except about ten acres of woodland and having erected thereon a two-story frame dwelling house, frame barn and other outbuildings. All in good state of cultivation, having a good orchard and fruit trees thereon and being well watered with springs.

Seized, taken into execution and to be sold as the property of Joseph P. Harney surviving defendant, at the suit of John W. McMahon.

JUDSON BROWN, Sheriff.
 Sheriff's office, April 25, 1908.

Notice.

Notice is hereby given that an application will be made to the Honorable Charles E. Terry, President Judge of the Court of Common Pleas of Sullivan Co., on Monday, May 18, 1908, at 2 o'clock p. m., for the charter of a corporation to be called "The Mildred Benevolent Association of Mildred, Sullivan County, Pennsylvania" the character and object of which are to unite fraternally white male persons into a fraternal, beneficial society or association, with a ritualistic form of work, for beneficial and protective purposes, by providing for the payment of benefits to its members or to their beneficiaries in case of death, sickness, temporary or permanent disability, whether death, sickness or disability result from disease, accident or old age; to provide a fund from which said benefits may be paid, and the expenses of said corporation may be defrayed, by charging initiation fees to all persons who may become members of said society, and by dues and assessments levied upon and collected from each of said members; to provide a constitution and by-laws not inconsistent with the laws of this Commonwealth or those of the United States. Said charter is now on file in the office of the Recorder of Deeds of Sullivan County at Laporte, Pa., where the same may be inspected by any and all interested therein.
 A. J. BRADLEY, Solicitor.
 April 1, 1908.

AN ORDINANCE.

To establish sidewalk grades and curb lines on the various streets in the Borough of Laporte, Pennsylvania, altering width of Main street between Spring Alley and West street fixing distances of side walk lines from curb lines, providing for letting by contract any borough improvement and providing penalty for non-conformance with this ordinance.

Section 1. Be it enacted and ordained by the Town Council of Laporte Borough in regular meeting assembled, and it is hereby enacted and ordained by the authority of the same, that grades for sidewalks be hereby adopted upon the following streets:

On Cherry street from Maple street to Spring Alley. On Meylert street from Maple street to Spring Alley. On Main street from Maple street to A. Rose's house; on Park street from Maple street to west corner of Catholic Church lot. On Maple street from Park street to Cherry street. On Court street from Park street to Cherry street. On Muncy street from Spruce street to south corner of Stormont's lots. On King street, from Park street to Cherry street. On Beech street from Main street to Cherry street. On Thorne street from Park to Main street. On Spring Alley from Park street to Meylert street.

Section 2. That the following levels are hereby fixed and determined as and for the levels and grades upon which all the side walks now in use and hereafter to be built shall be constructed; (Here follow the levels and grades in detail referred to in sections five and seven of this ordinance.) And it is established that as a basis for determining the grades hereinafter set forth the Bench Mark on top step northwest corner, north entrance to the Court House is at an elevation of 1666.99 feet datum mean tide at Perth Amboy.

Section 3. All side walks hereinafter constructed on any street in the borough aforesaid shall conform to the grades established in this ordinance; and if the owner or owners of any lots fronting thereon shall neglect or refuse to construct said sidewalks, upon the said grades, for fifteen days after written notice, served by order of the Borough Council, upon the owner, owners, agent, tenants or attorneys, it shall be the duty of the Borough Council to cause said walk to be so built and the cost thereof, with 10 per cent additional to be filed as a lien against the abutting property.

Section 4. Curb lines are hereby established as follows: On all streets eighty feet wide, twenty feet on each side of center line of street. On all streets sixty feet wide, fifteen feet on each side of center line. On all streets forty feet wide, ten feet on each side of center line. On all streets eighty feet wide side walk lines shall be fifteen feet from curb line. On all streets sixty feet wide, side walk lines shall be ten feet from the curb line. On all streets forty feet wide, side walk lines shall be five feet from the curb line. On all thirty foot streets, side walk lines shall be three feet from the curb line. On all fifty four feet streets, sidewalk lines shall be eleven feet from the curb line.

Provided that outer lines on sidewalks existing at the time of the adoption of this ordinance shall not be changed unless such changes are made in conformity with resolutions adopted by the borough council.

Provided further, that in order to avoid interference with buildings and walls, Main street is to be made four feet narrower from center on the south side and eight feet narrower on the north side, leaving curb, from Spring Alley to West street.

Section 5. The sidewalk grades upon the various streets and alleys shall be in accordance with the plans, profiles, specifications and map, made from original surveys by W. C. Mason, Borough Engineer, which elevations, grades and distances are given in detail in said ordinance which is now on file with the Secretary of the Town Council and which is entered in full in the Borough Ordinance Book.

Section 6. The Town Council shall have full power and authority to let, by contract, the furnishing of materials for and the construction of, any street crossing, sidewalks or pavement, any street curb or other improvement or building; provided before such contract can be let, notices of the work to be done shall be inserted in at least one newspaper, published in the County of Sullivan and in the Borough of Laporte if there be one, for at least one week's issue previous to the letting of such contract which notice shall state where plans and specifications of the work to be done can be seen and shall invite bids for its performance.

Section 7. Profiles marked "Profiles of Street Grades in the Borough of Laporte, Pa., W. C. Mason, C. E." and map marked "Map of the Borough of Laporte Pa., W. C. Mason, C. E." are hereby approved and adopted as showing distances, elevations, street lines, sidewalk grades, curb lines and center lines of street, within the Borough of Laporte, and the same are hereby made a part of this ordinance.

Section 8. All ordinances or parts of ordinances inconsistent herewith be and the same are hereby repealed.

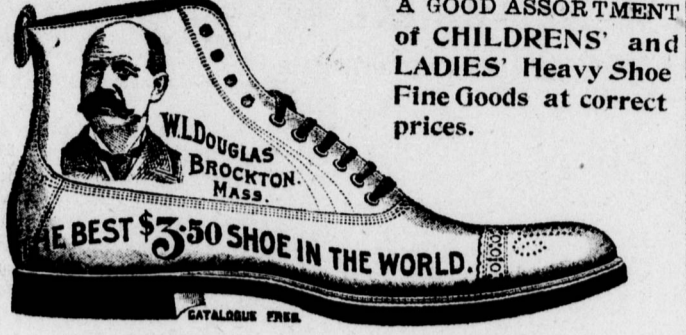
Passed this 7th day of April 1908.
 F. W. MEYLERT,
 President Council.

F. H. INGHAM, Secretary.
 The above and within ordinance is hereby approved this 7th day of April, 1908.
 W. H. RANDALL, Burgess.

Agents wanted:—16x20 crayon portraits 40 cents, frames 10 cents and up, sheet pictures one cent each. You can make 400 per cent profit or \$36.00 per week. Catalogue and samples free.
 Frank W. Williams company,
 1208 W. Taylor St.,
 Chicago Illinois

Cultivate the Habit of buying reputable goods from a reputable concern.

We are agents for W. L. DOUGLASS SHOES from 2.50 to 5.00 per pair.
 Wood School Shoes for boys has no equal. Tracys Shoes for farms are, we find, always satisfactory.



A GOOD ASSORTMENT of CHILDRENS' and LADIES' Heavy Shoe Fine Goods at correct prices.

Clothing Made to Order
 All have the right appearance and guaranteed outd in both material and workmanship and price mte.
 We also manufacture Feed, the Flag Brand. It is not cheap, but good. Is correctly made. Ask your dealer for it or write us for prices.

NORDMONT SUPPLY Co.
 General Merchants, PROPRIETORS NORDMONT STEAM MILL
 NORDMONT, PA.

" ? " PATENTS
 The Best place to buy goods is often asked by the prudent housewife. Money saving advantages are always being searched for. Lose no time in making a thorough examination of the New Line of Merchandise Now on

EXHIBITION
 ? ? ? ??? ? ? ?

STEP IN AND ASK ABOUT THEM.
All answered at Vernon Hull's Large Store.
 Ellipton, Pa.

Advantages— This is the Time This is the Place

When you are looking for some good Farm Implements it will be to your Advantage to call on me and examine my line consisting of

- DEERING BINDERS, MOWERS, REAPERS and HAY RAKES. Also the EMPIRE GRAIN DRILLS, LEROY PLOWS, HARROWS AND CULTIVATORS.

Blacksmithing and General Repair Work given prompt attention and executed with guaranteed satisfaction.

J. M. Dempsey, CHERRY MILLS, PA.

Kodol Dyspepsia Cure
 Digests what you eat.
 This preparation contains all of the digestants and digests all kinds of food. It gives instant relief and never fails to cure. It allows you to eat all the food you want. The most sensitive stomachs can take it. By its use many thousands of dyspeptics have been cured after everything else failed. Is unequalled for the stomach. Children with weak stomachs thrive on it. First dose relieves. A diet unnecessary. **Cures all stomach troubles**
 Prepared only by E. C. DEWITT & Co., Chicago The \$1. bottle contains 2 1/2 times the 60c. size

The Greatest of all Musical Inventions—the Two-Horn

DUPLEX PHONOGRAPH

FREE TRIAL

NO MONEY IN ADVANCE

It is the one phonograph that gives you all the sound vibrations. It has not only two horns, but two vibrating diaphragms in its sound box. Other phonographs have one diaphragm and one horn. The Duplex gets all the volume of music; other phonographs get the half. Not only do you get more volume, but you get a better tone—clearer, sweeter, more like the original. Our

Each horn is 30 in. long with 77 in. bell. Cabinet 28 in. x 14 in. x 10 in.

FREIGHT PREPAID

Seven Days' Free Trial

We allow seven days' free trial in your own home in which to decide whether you wish to keep it. If the machine does not make good our every claim—volume, quality, by passing satisfaction—just send it back. We'll pay all freight-charge both ways.

All the Latest Improvements

The Duplex is equipped with a mechanical feed that revolves the record of all the destructive work of propelling the reproducer across the surface. The needle point is held in continuous contact with the inner (which is the more accurate) wall of the sound wave groove, thus reproducing more perfectly whatever music was put into the record when it was made. The Duplex has a device by which the weight of the reproducer upon the record may be regulated to suit the needs of the occasion, thus greatly preserving the life and durability of the records. These are exclusive features of the Duplex and can not be had upon any other make of phonograph. Plays all sizes and makes of the records. Our Free Catalogue explains everything.

FREE CATALOGUE

Will explain fully the superiority of The Duplex. Don't allow any one to persuade you to buy any other make without first sending for our catalogue.

Save all the Dealers' 70% Profits

The Duplex is not sold by dealers or stores. We are the Duplex's only makers, and sell only direct from our factory to the user, eliminating all middlemen's profits. That is why we are able to manufacture and deliver the best phonograph made for less than one-third what dealers ask for other makes not so good.

DUPLEX PHONOGRAPH Co., 31 Rose St. Kalamazoo, Mich.

Reduction Sale of SHOES
 Great Bargains
 Groceries and Provisions.
 We have the best goods at the lowest prices. If you want a good sack of flour, try the Laurel Brand of winter wheat and you will use no other. Special prices on large quantities. Our motto is: "Best Goods at Lowest Prices."
J. S. HERRINGTON, DUSHROE, PA.

Presto "MAKES PROPER DIET" PLEASING
 new pastry delights **FORCE**

SPRING STYLES
Clothing for Easter
 Arriving daily in Large lots
 at **Jacob Whinton's, MUNCY VALLEY, PA.**

Come and see the perfect models no country tailor can duplicate.

\$18, 16, 15 12. 10, 8.00 and \$6.50
SUITS.

Spring Styles of Ladies' Waists.
 50 cents and up.

BIG SALE OF LADIES' HATS 3.50, 3.00 and 2.50 Hats for 1.19 at Clearance Sale. 2.75 Ladies' Hats at 99c. An extensive line of Ladies' Hats at 38c.

Men's Shoes at Clearance Sale.
 W. L. DOUGLASS 5.50 Shoe for 2.85; and the 3.00 Shoe for 2.55 at this sale only
A Big Lot of Ladies' Shoes, 2.00 and 1.75 Shoes at 1.19.
 Please don't delay your coming too long. Better come at once for first choice.

J. M. WHITON, MUNCY VALLEY, PA.