

REPUBLICAN NEWS TRI-M.
CHARLES L. WING, Editor.
 Published Every Thursday Afternoon
 By The Sullivan Publishing Co.
 At the County Seat of Sullivan County,
LAPORTE, PA.
 W. C. MASON, President,
 THOS. J. INGHAM, Sec'y & Treas.
 Entered at the Post Office at Laporte, as
 second-class mail matter.

To The Republican Electors of Pennsylvania:
 I am directed by the Republican State Committee to announce that the Republicans of Pennsylvania, by their duly chosen representatives will, in accordance with the provision contained in Section 12 of the Uniform Primary Law (requiring that the State Convention be held not later than one week after the date of the primaries), meet in convention at the Lyceum Theatre in the City of Harrisburg on Tuesday, June 6, 1907, at 10:30 A. M. for the purpose of nominating a candidate for the following office, viz:
 One person for the office of State Treasurer; and for the transaction of such other business as may be presented.
 In accordance with the rules governing the party, the representation in the State Convention will be based upon the vote polled at the last Presidential election. Under the rules, each legislative district is entitled to one delegate for each two thousand votes cast for Republican Presidential electors in 1904, and an additional delegate for every fraction of two thousand votes polled in excess of one thousand.

By order of State Comm.
 W. R. Andrews, Chairman.
 John R. Williams, Sec'y.
Joseph Sick,
 DEALER IN
 Flour, Feed and Meal,
 Cherry Mills, Pa.

I have just received a large load of re-cleaned outs for seed.
 A large quantity of corn meal and oat chop on hand. Also have a nice chop made from corn, oats and buck-wheat for milch cows and sheep.
 Call on me for special prices on large quantities.

JOSEPH SICK,
 CHERRY MILLS, PA.

NUTRETO.
 A Nerve, Brain and Brawn Food Drink.
 Give the little ones all the Nutreto they like. It's the NATURAL FOOD DRINK. Harmless as milk; nothing more delicious.
 Sold at Smith's.

Capital and Surplus, \$450,000.00



Every Woman should have a savings account. Such accounts have been the salvation of many a family in time of trouble. You can bank with this Company no matter where you live, by sending your money by mail. We pay 3 per cent. interest. Write for booklet telling how to Bank by Mail.

LACKAWANNA TRUST & SAFE DEPOSIT COMPANY
 404 Lackawanna Avenue
 SCRANTON, PA.

Mercantile Appraisal.
 To vendors of domestic and foreign merchandise etc. in Sullivan county Pa. will take notice that they are appraised and classified by the undersigned appraiser of Mercantile and other Licenses for the year 1907, as follows, to wit:

Bernice Store Co. Cherry Twp. Mercantile
 Conner, J. J. do do do
 Cook, William do do do
 Denney, J. M. do do do
 Deley, John do do do
 Gross, John do do do
 Golla, L. do do do
 Hill, Joseph do do do
 Gratify, W. C. do do do
 Heffman, Mrs. T. do do do
 Hyman, Morris do do do
 Hyman, B. B. do do do
 Hyman, Morris do do do
 Heilman, Joseph do do do
 Hopec, P. do do do
 Jackson, C. E. do do do
 Lowry, Lawrence do do do
 Magerly, Edm. do do do
 Myers, W. J. do do do
 Myers, Frank do do do
 Metcalf, Patrick do do do
 Schaud, H. J. do do do
 Sick, Charles do do do
 Schaud, John G. do do do
 Sick, Joseph do do do
 Sick, John do do do
 Sick, Wendell do do do
 Weaver, I. L. do do do
 Youkin, Joseph & Son do do do
 Haley, William do do do

Colley do do
 Fitzgerald, John do do
 Geyer, E. do do
 Hunsinger, C. F. do do
 Henbrak, Joseph do do
 Johnson, W. L. do do
 Johnson, G. A. do do
 Johnson, John L. do do
 Lopez Drug Co. do do
 Kellogg, H. M. do do
 Murry, P. P. do do
 Miller, Charles E. do do
 McKibbin, Mary E. do do
 Metcalf, J. H. do do
 Ryan, James P. do do
 Satoel, Michael do do
 Strydom, Jacobus do do
 Armstrong, A. T. Davidson do do
 Baek, J. W. do do
 Basley, Harry do do
 Crist, Nora do do
 Patten, Ira W. do do
 Devanney, M. J. do do
 Frisco, L. K. do do
 Firman, Geo. H. do do
 Lorch, D. H. do do
 Lorch, Mrs. D. H. do do
 Macargel, James P. do do
 Macargel, Frank do do
 Miller, C. A. do do
 Meyers, Geo. W. do do
 Palmater, W. L. do do
 Stimmons, J. B. do do
 Starr, Chas. do do
 Swank, Bill do do
 Taylor, C. S. do do
 Taylor & Bro. do do
 Whitton, Jacob do do
 Webby, E. do do
 Watson, John do do
 Bahr, C. A. Dushore do do
 Ball, J. P. do do
 Cummins, M. do do
 Cunningham, James do do
 Connor, P. do do
 Connor, Mrs. J. do do
 Crowl, Chas. do do
 Cullins, J. H. do do
 Carroll, D. E. do do
 Carroll, John W. do do
 Cole, Samuel do do
 Dechoy, Anthony Mill Co do do
 Dieffenbach, W. H. do do
 Deegan, Geo. T. do do
 Daley, Patrick do do
 Hancock, J. do do
 Hoffman F. do do
 Hoffa, Chas. W. do do
 Hoffa & Co. do do
 Honneter, G. H. do do
 Harrington, J. S. do do
 Hirschman V. do do
 Kraus, Wm. H. do do
 Kline, Bernard do do
 Keel, D. do do
 Kennedy, J. F. do do
 Kreider, Adam do do
 Kaufman, M. do do
 Lilley & Cott. do do
 Lane, John D. do do
 Mosier, Will do do
 McDonald, P. E. do do
 Metcalf, Robert do do
 Nichol, Wm. do do
 Ouel, James E. do do
 Ober, H. E. do do
 Peater, Chas. do do
 Gossey, Anthony do do
 Reeser, J. D. do do
 Rettenbury, Mrs. Bernice do do
 Seltman, E. do do
 Sarce, Frank do do
 Youkin, & Co. J. H. do do
 Williams, C. M. do do

Kreger, Daniel & Son Eagles Mere do do
 Birchard, F. C. do do
 VanBuskirk, W. do do
 Kiess, Edgar do do
 Reeser, A. W. do do
 Little, A. C. do do
 Taylor, W. L. do do
 Warner, Wm. Y. do do

Evoritt, C. B. Elkland Twp. do do
 Hugo, George do do
 Hartman, August do do
 Bart, William do do
 Jennings, Edsworth do do
 Holtz, A. T. do do
 Snyder, J. L. do do
 Jennings, C. B. do do
 Norton & Hottenstein, Forks Twp. do do
 Fawcett B. W. Forksville do do
 Callins, Wm. do do
 Giddell & Fleming do do
 Rogers, M. A. do do
 Gonsky, W. do do
 Smith, J. B. do do
 Mathers, Mis. Sallie do do
 Campbell, A. E. Fox Twp. do do
 Campbell, L. L. do do
 Fanning, W. H. do do
 Hill, E. W. do do
 Moreau, Frances do do
 Caseman, C. do do
 Parish, J. M. do do
 Williams, O. J. do do
 Caseman, Jacob Hills Grove do do
 Laidacker, Bartel do do
 Gatsch, S. T. do do
 Hull, Vernon do do
 Hoffman, W. L. do do
 Fiester, G. M. Laporte Twp. do do
 Nordmont Supply Co do do
 Red, Geo. W. do do

Buschhausen A. H. Laporte Boro do do
 Cott, & Kraus do do
 Hassen, John Jr do do
 Leeb, William do do
 Smyth, John L. do do
 Gallagher, F. W. do do
 McFarlane, Jas. do do
 Minter, John do do
 Bourman Smith Shrewsbury do do
 Sones, C. W. do do

Johnson, Jno. L. two pool tables, Lopez do do
 Marzetti, J. P. one pool table, Muncy Valley do do
 Kiess, E. E. one pool table, Eagles Mere do do
 one billiard table do do
 two ten pin alleys do do
 Warner, W. Y. two ten pin alleys do do

Atlantic Refining Co., wholesale, Dushore, do do

And that an appeal will be held in the office of the County Treasurer in Laporte, Pa. on the 26th day of April, 1907, at 10:30 A. M. what and where you may attend if you think proper.

MILES O. BARNES, Mercantile Appraiser.

Foleys
 is a sure resource
 (better than flour)

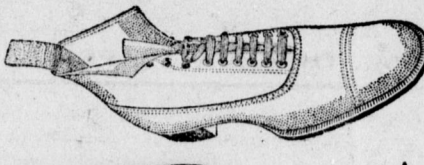
Don't tobacco spit and Smoke Your Life Away. Do quit tobacco easily and forever, by using Foleys. Full of life, nerve and vigor, take No-To for the weaker worker, that makes you meet strong. All druggists, 50c or 25c. Caregiver and 50c. Booklet and sample free. Address: Stocking House, Co. Chicago - New York.

IT MAKES PROPER DIET
PLEASE

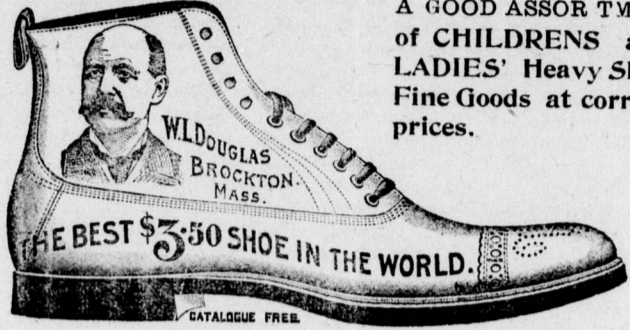
Foley's Honey and Tar
 cures colds, prevents pneumonia.

Cultivate the Habit of buying reputable goods from a reputable concern.

We are agents for W. L. DOUGLASS SHOES from 2.50 to 5.00 per pair.



Wood School Shoes for boys has no equal. Tracys Shoes for farms are, we find, always satisfactory.



A GOOD ASSORTMENT of CHILDRENS and LADIES' Heavy Shoe Fine Goods at correct prices.

Clothing Made to Order
 All have the right appearance and guaranteed outsd in both material and workmanship and price mte.
 We also manufacture Feed, the Flag Brand. It is not cheap, but good. Is correctly made. Ask your dealer for it, or write us for prices.

NORDMONT SUPPLY Co.
 General Merchants, PROPRIETORS NORDMONT STEAM MILL, NORDMONT, PA.

WINCHESTER
"NEW RIVAL"
 FACTORY LOADED SHOTGUN SHELLS

No black powder shells on the market compare with the "NEW RIVAL" in uniformity and strong shooting qualities. Sure fire and waterproof. Get the genuine.
 WINCHESTER REPEATING ARMS CO. New Haven, Conn.

Primary Election Notices.
 Notice is hereby given that the Chairman of the Republican party for Sullivan County, has filed in this office a written notice setting forth the names of the following party officers to be filled at the ensuing primary election, in accordance with the Act of Assembly of February 17, 1906. One County Chairman, one Secretary, and one Treasurer of the Standing Committee; one Committeeman for each voting precinct, and one Delegate to the Republican State Convention.

Notice is hereby given that the Chairman of the Democratic party for Sullivan County has filed in this office a written notice setting forth the names of the following party officers to be filled at the ensuing primary election in accordance with the Act of Assembly of February 17, 1906. One Delegate to the Democratic State Convention, one Committeeman for each voting precinct.

Notice is hereby given that the Chairman of the Prohibition party, for Sullivan County has filed in this office a written notice setting forth the name of the following party officers to be filled at the ensuing primary election in accordance with the Act of Assembly of February 17, 1906. One County Chairman, one Committeeman for each voting precinct.

PUBLIC OFFICES TO BE FILLED AT THE SPRING PRIMARY.
 One High Sheriff.
 One Prothonotary, Clerk of the Courts. Etc.

F. H. McCarty,
 B. P. Bennett,
 Michael McDonald, } Coms.
 Hoffman, W. L. } Clerk.

Attest: Wm. P. Shoemaker, Clerk.

Notice.
 Estate of Jesse Williams late of Forks Township, Sullivan County, Pa., deceased. Notice is hereby given that letters of administration upon the estate of said decedent have been granted to the undersigned. All persons indebted to said Estate are requested to make payment and those having claims or demands against same will make them known without delay to
 A. H. BUSCHHAUSEN, Admr.
 Laporte, Pa., March 30, 1907.

60 YEARS' EXPERIENCE

PATENTS

TRADE MARKS DESIGNS & COPYRIGHTS & C.

Anyone sending a sketch and description may quickly ascertain our opinion free whether an invention is probably patentable. Communications strictly confidential. **HANDBOOK** on Patents sent free. Oldest agency for securing patents. Patents taken through Munn & Co. receive special notice, without charge, in the

Scientific American.

A handsomely illustrated weekly, Largest circulation of any scientific journal. Terms, \$3 a year; four months, \$1. Sold by all newsdealers.

MUNN & Co. 361 Broadway, New York
 Branch Office, 255 F St., Washington, D. C.

Williamsport & North Branch Railroad TIME TABLE.
 In effect Monday, Sep. 25, 1906.

Read down		Flag stations where time is marked "F"										Read up			
AM	PM	P.M.	P.M.	A.M.	A.M.	A.M.	A.M.	A.M.	A.M.	A.M.	A.M.	P.M.	P.M.	PM	PM
10 15	12 50	4 20	5 21	6 30	10 20	7 60		Halls	6 20	7 60	9 37	12 15	4 00	5 05	9 60
10 20	12 55	4 25	5 26	6 35	10 25	7 65		Pennsdale	6 15	7 55	9 33	12 12	3 56	5 00	9 55
10 25	1 00	4 30	5 31	6 40	10 30	8 00		Hughesville	6 10	7 40	9 27	12 09	3 49	4 54	9 50
1 05	4 35	5 36	6 45	7 54	10 35	8 05		Picture Rocks	9 15	10 51	12 38	1 01	3 58	5 03	9 56
1 15	4 45	5 46	6 55	8 04	10 40	8 10		Chamond	10 45	12 32	1 19	3 12	4 17	5 22	10 01
1 19	4 49	5 50	6 59	8 08	10 45	8 15		Glen Mewr.	10 38	12 25	1 12	3 05	4 10	5 15	9 56
1 26	4 56	5 57	7 06	8 15	10 50	8 20		Muncy Valley	10 31	12 18	1 05	2 58	4 03	5 08	9 56
1 34	5 04	6 05	7 14	8 23	10 55	8 25		Strawbridge	10 24	12 11	1 00	2 53	3 58	4 63	9 56
1 40	5 10	6 11	7 20	8 29	11 00	8 30		Beechfield	10 17	12 04	0 53	2 46	3 51	4 56	9 56
1 43	5 13	6 14	7 23	8 32	11 05	8 35		Sonestown	10 10	11 57	0 46	2 39	3 44	4 49	9 56
1 55	5 25	6 26	7 35	8 44	11 15	8 45		Northmont	9 59	11 46	0 35	2 28	3 33	4 38	9 56
	5 28	6 29	7 38	8 47	11 20	8 50		Mokoma	9 52	11 39	0 28	2 21	3 26	4 31	9 56
	5 43	6 44	7 53	9 02	11 30	9 00		Laporte	9 22	11 09	0 00	1 53	2 58	4 03	9 56
	5 45	6 46	7 55	9 04	11 35	9 02		Ringdale	9 15	11 02	0 00	1 48	2 53	3 58	9 56
	5 58	6 59	8 08	9 17	11 40	9 10		Bernice	9 08	10 55	0 00	1 41	2 46	3 51	9 56
	6 05	7 06	8 15	9 24	11 45	9 15		Butterfield	8 51	10 38	0 00	1 34	2 39	3 44	9 56
		A.M.	A.M.	A.M.	A.M.	A.M.									
		PM	PM	AM	AM	AM									
		6 20	3 00	9 20	7 10			Sonestown	9 15	2 40	5 10	9 00			
		7 08	3 48	10 08	7 58			Eagles Mere	8 27	1 02	4 22	8 12			
		6 23		9 49				Dushore			7 56	4 28			
		7 26		10 50				Towanda			7 05	5 39			
				12 10				Wilkes Barre				3 65			
5 00	4 00		12 29	10 00	7 30	Williamsport	6 30	10 39	12 39	5 37	10 31				

S. D. TOWNSEND,
 Gen. Manager, Hughesville

D. K. TOWNSEND,
 Passenger Agent.

Reduction Sale of SHOES
 Great Bargains
 Groceries and Provisions.

We have the best goods at the lowest prices. If you want a good sack of flour, try the Laurel Brand of winter wheat and you will use no other. Special prices on large quantities. Our motto is: "Best Goods at Lowest Prices."

J. S. HERRINGTON,
 DUSHROE, PA.

Our Time is Yours
 Whenever You're Ready to Pick Out That New **SPRING SUIT.**

JACOB WILTON Just Returned from Phila. and New York and purchased a big stock of Men's and Boys' Suits and All Kinds of Clothing to suit Spring and Summer Wear, so if you need a suit for yourself or family, you are invited to come and examine the goods and the prices. You can save from 20 to 25 per cent. on the dollar and you can get all styles. The goods are the latest that are made.

Men's Suits \$5.50, 7.00, 9.50, 10.50, 14.50, 15.50
 Youths' Suits, \$3.75, 5.50, 6.00, 8.00, 9.00, Lates Styles.
 Children's Suits, \$1.15, 1.50, 1.75, 2.50, 3.50, worth the money.

SHOES.

Also big lot of Shoes and Slippers, the latest styles, big values for your money. All kinds of low shoes to fit the foot and suit the purse. Also a big line of Douglas Shoes, the modern styles, best in the country.

Ladies' White Waists.

A large variety of Ladies' White Shirt Waists to select from. Prices range from 49c up to 98c, regular \$1.50 value. All colors. Also big lot of Corsets.

Millinery of the Rarest Type and Styles.

You are invited to call and examine our big line of Ladies' Hats, just received from New York. We bought from the largest importer from Paris. So you ladies need not worry about your hats, you can get them at Jacob Wilton's, Muncy Valley, Pa. Please don't forget to come here for your latest style hats when you need one.

Jacob M. Wilton,
 MUNCY VALLEY, PA.

PATENTS
 TRADE MARKS DESIGNS & COPYRIGHTS & C.
 FREE
 ADVISE AS TO PATENTABILITY
 Notice in "Inventive Age"
 Book "How to obtain Patents"
 Charges moderate. No fee till patent is secured.
 Letters strictly confidential. Address,
 E. G. SIGGERS, Patent Lawyer, Washington, D. C.