

REPUBLICAN NEWS ITEM.
 CHARLES L. WING, Editor.
 Published every Thursday afternoon
 by The Sun and Publishing Co.,
 At the Corner of 2nd and 3rd Sts.,
 Laporte, Pa.
 Entered at the Post Office at Laporte, as
 second-class mail matter.

CONTINENTAL FREE TRADE.
 Impossible Except Under One Single
 Government.

Some newspapers of the United States are following the Mexican Herald in a lot of talk about the necessity for making a North American tariff common to all the countries which may be reached without boats. The idea is a big one for the handlers. The same papers are fast and furious for state rights, even in this country, which has been one most of the time for more than a century, and they advocate the making of state lines emphatic in all matters of business.

There is nothing which needs to have the boundaries of a country so plainly marked as the tariff for the revenue of the government and for the protection of the industries which support the movement. That principle cannot be spread out over a continent, so long as any two sections of it are controlled by different governments, with the best interests of the industries subserved.

The largest territory of this continent is still within the grasp of the British nation, with its most important interests controlled on the other side of the Atlantic. Any man who has read of the Boston tea party and the war which followed it should know that it is no possibility of a tariff for all the continent with the interests of the United States getting the protection they are entitled to.

Henry M. Whitney has said that President Roosevelt told him that he was in favor of continental free trade, and the president is too busy to say any such foolishness. If free trade is good for all North America it is also good for all the world, and the facts of history prove that it is the greatest maker of beggary the world has ever known. Any American who has been to England within five years can furnish all the proof that is necessary for that. It is on demonstration ever there all the time, and the greatest economists of the thinking world have been able to find no cure for it but the putting of the industries of a nation under a protective system of tariff which will guarantee the safe investment of capital and the payment of living wages to the workers. — *Washington Telegram.*

MEANS LOWER WAGES:
 Will likely to follow Any Attempt at Tariff Revision.
 Under much of the demand for a revision of the tariff is a desire for lower wages. Many hold the belief that the time has come when a check may well come to steadily advance scales of wages. Farmers, perhaps, more so than manufacturers entertain this conviction. When tariff changes come they cannot be limited to the few categories desirable. The ways of congress are such that many concessions must be granted to get one. During the agitation for and adoption of any plan materially dropping protection tariff uncertainty must prevail and prosperity halt.

We believe high tariff means high wages. We also believe that high wages mean good times. The greater the future purchasing power the greater the prosperity. Child the few corrections ever edily needed, be made in the schedules and finishing step there, all might be well. But begin and no man can foresee the end. Because of this fear of corrections never to be made? Not while things are as good for everybody as now. — *Illness (N. Y.) Journal.*

Naturally.
 A political party is always very loath to abandon its traditional policy. It is to be expected that the Republican party will only very slowly and in spite of strenuous and persistent opposition consent to any modification of its traditional policy of high protection. The party leaders have too long appealed to the freedom of the ground that the party stands for the protection of American industries, they have too long ennobled the party for giving the nation prosperity through the adoption of the protection principle, to consent that that principle should be abandoned or easily modified either by changes in the schedules or the adoption of reciprocity. — *Outlook.*

The West Pleased.
 The cattle districts of the west are finding no fault with President Roosevelt's treatment of the Massachusetts politicians who called to see about placing hides on the free list. — *Kansas City Journal.*

All in a Nutshell.
 Letter heads of a Pomona grange in Calif. in addition to the emblems of the order, bear the following: "Patrons of Husbandry, the Only Protection and Training School, National in Extent, Available for the Farmer and His Family. Organized in 1867. Over 27,000 chapters issued and a Membership of Nearly a Million. Father of Rural Mail Delivery Present Department of Agriculture at Washington, Interstate Commerce Commission and the Office of Dairy and Food Commissioner at Columbia."

Rochester (N.Y.) Business Institute
 A LEADER IN ITS FIELD.
 Many more calls for graduates to fill good positions than graduates desiring places. Enrollment much larger than last year. The managers are the authors of the leading series of commercial text-books. An unusually large registration expected in January. Catalogue free. Correspondence invited.

“ ? ”

The Best place to buy goods

Is often asked by the prudent housewife. Money saving advantages are always being searched for. Lose no time in making a thorough examination of the New Line of Merchandise Now on

EXHIBITION
 ? ? ? ??? ? ? ?

STEP IN AND ASK ABOUT THEM.

All answered at Vernon Hull's Large Store.
 Hillsgrove, Pa.

CENTRAL State Normal School. LOCK HAVEN, PA.
 J. R. FLICKINGER, Principal.

Full term of 15 weeks begins September 11. The facilities at this important school for doing first class work, professional and academic were never better than now. Its graduates are required to do a full year's teaching in the training school. Its faculty has the best American and European training. Buildings modern. College Preparatory department Location unexcelled. Fine Gymnasium. Expenses moderate. Free tuition to prospective teachers. Address for illustrated catalogue, the Principal.

NOTICE.—Every policy holder of the F. & M. Home Fire Insurance Co., whose post office address has been recently changed is requested to send (by postal or otherwise) the new address and No. of the policy to the Secretary at Forksville, R. D. Lancaster, M. R. Black, Sec'y, President BUCKNELL UNIVERSITY.—JOHN HOWARD HARRIS, President. College: Courses in Arts, Philosophy, Science, Chemistry, Biology Civil and Electrical Engineering, with shop work. Department for Women, comprising College, Institute, Art and Music courses. School of Music open to both sexes. Academy for young men and boys. For catalogue etc. address the Registrar, Wm. C. Gretzinger, Lewisburg, Pa.

Sealed Proposals. COMMONWEALTH OF PENNSYLVANIA State Highway Department, Harrisburg, Pa. Sealed proposals will be received by the State Highway Department of Pennsylvania, under the Act approved May 14, 1905, for the construction of 7,000 feet of road, extending from the Lehigh Valley Railroad, near Bernice P. O., to Sugar Hill School House, in Cherry Township, in the County of Sullivan. Plans and specifications can be seen at the office of the County Commissioners, Laporte, Pa., and at the office of the State Highway Department, Harrisburg, Pa. Bidding blanks will be furnished by the State Highway Department upon request. Bids must be endorsed "PROPOSALS FOR CONSTRUCTION OF ROAD IN CHERRY TOWNSHIP, SULLIVAN COUNTY," and received at the office of the State Highway Department not later than January 31, 1906. JOSEPH W. BUNTEL, State Highway Commissioner.

In the matter of the application of Louis T. Savneool for a divorce from Sarah Savneool his wife. To Sarah Savneool you are hereby notified that an alias subpoena in the above stated case having been returned that you could not be found in this county, you are required to appear on the Monday of February, next, at a Court of Common Pleas to be held at Laporte, at 2 o'clock, p.m., and make answer to the complaint made by your husband in the above stated case. FRANK W. BUCK, Sheriff, Sheriff's office, Laporte, Pa., Jan. 19, '05.

John D. Reeser's Big Store, Bank Block, Dushore, Penn'a
 J. D. REESER'S CASH DEPARTMENT STORE.

CLEARANCE SALE JANUARY 6 to 20th, 1906

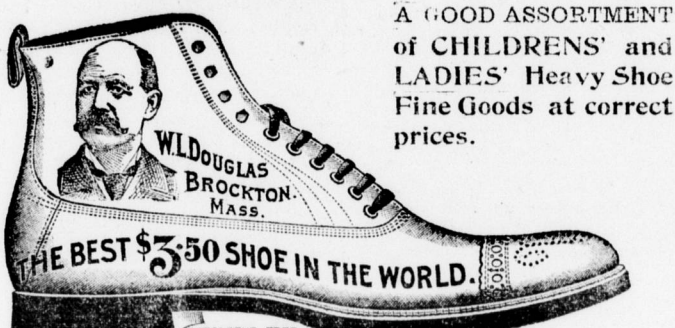
TO MY PATRONS: The hearty support given me by the public in my effort to convert my mercantile business from "credit" to "cash" has been most gratifying as demonstrated by the crowds that have visited my store during the present sale. Your presence during the past ten days and the manner in which you have supported me in this sale has instilled in me a desire to serve you better in both price and quality. Each day during this sale I shall put forth new and fresh bargains for your inspection and I trust you will take this as a special invitation to visit my store and inspect the goods. High grade of goods. Reasonable cash prices. Prompt and courteous treatment, are embraced in our motto

John D. Reeser's Big Store, Bank block DUSHORE.

Cultivate the Habit of buying reputable good from a reputable concern.

We are agents for W. L. DOUGLASS SHOES from 2.50 to 5.00 pair.

Wood School Shoes for boys has no equal. Tracys Shoes for families are, we find, always satisfactory.



A GOOD ASSORTMENT of CHILDREN'S and LADIES' Heavy Shoe Fine Goods at correct prices.

Clothing Made to Order All have the right appearance and guaranteed std in both material and workmanship and price in e. We also manufacture Feed, the Flag Brand. It is not cheap, but good. Is correctly made. Ask your dealer for it or write us for prices.

NORDMONT SUPPLY Co. General Merchants, PROPRIETORS NORDMONT STEAM MILL, NORDMONT, PA.

THE RIGHT WAY to Buy Furniture is to come or send to Holcomb and Lauer's and tell them about what you want They will Do the Rest.

Following is a list of the many useful and beautiful articles they keep:

Rocking Horses, Shoe Flies, Doll Carriages, Doll Beds, Child's Couches, Childrens, Morris Chairs, Music Cabinets, Racks, Plate racks, Magazine racks, Hat and Hall racks, Shaving and Medicine Cabinets, Work and Waste Baskets, Smoking Sets, Shirt waist Boxes, Umbrella Stands, Blacking cases, Jardiner Stands and Tablets, Pedistals.

Morris Chairs and Morris Rockers, Fancy Chairs, Fancy Rockers and Dining Chairs, Drop Head Couches, and plain couches. Portier Curtains, Rope Porters, Couch Covers, Rugs and Table Spreads, Sewing Machines from 14.50 to 45.00. Pictures, picture frames and picture framing.

Holcombe & Lauer, Furniture & Undertaking DUSHORE, PA.

TELEPHONE.

MEN WANTED at the American Car and Foundry Co's. works at Berwick, Pa.

Able bodied men can find steady work at fair wages in this great plant. An increase of force necessary because of extension of works. Call in person at the Employment Office of the Company in Berwick.

DYSPEPTICIDE BANNER SALVE The greatest aid to DIGESTION. the most healing salts in the world.

Williamsport & North Branch Railroad TIME TABLE. In effect Monday, Dec. 11, 1905.

Read down				Flag stations where time is marked "F"												Read up			
P. M.	P. M.	P. M.	P. M.	A. M.	A. M.	A. M.	A. M.	STATIONS.	A. M.	A. M.	A. M.	A. M.	P. M.	P. M.	P. M.	P. M.			
12 50	1 20	5 25	10 22	7 30	Halls	9 37	12 15	4 00	5 05	9 55			
12 55	1 25	5 30	10 27	7 35	Pennsboro	9 31	12 12	3 55	5 00	9 50			
1 05	1 35	5 40	10 34	8 01	Hughesville	9 22	12 03	3 45	4 50	9 42			
1 13	1 43	5 48	10 41	8 06	Picture Rocks	9 15	11 52	3 35	4 40	9 35			
1 19	1 49	Lyons Mills	11 47			
1 26	1 56	Chambers	11 41	3 28			
1 31	1 59	Green Mount	11 35	3 22			
1 40	2 09	Strawbridge	11 27	3 15			
1 41	2 05	Herschelton	11 21	3 09			
1 50	2 07	Murphy Valley	11 15	3 03			
.....	Sonestown	11 09	3 00			
.....	Nordmont			
.....	Mokoma			
.....	Laporte			
.....	Ringdale			
.....	Bernice			
.....	Satterfield			
.....			
.....			
.....			
.....			
.....			
.....			
.....			
.....			
.....			
.....			
.....			
.....			
.....			
.....			
.....			
.....			
.....			
.....			
.....			
.....			
.....			
.....			
.....			
.....			
.....			
.....			
.....			
.....			
.....			
.....			
.....			
.....			
.....			
.....			
.....			
.....			
.....			
.....			
.....			
.....			
.....			
.....			
.....			
.....			
.....			
.....																