

THE BUSY FACTORIES

GRATIFYING EXHIBIT OF STATISTICS
AS TO IMPORTS.

Increasing Quantities of Manufacturers' Materials an Important Feature of Our Foreign Trade, Whereby Additional Employment is Assured.

The bureau of statistics' records for January of this year show that manufacturers' materials formed one-half of our total imports during that month and about 45 per cent of the imports for the seven months ended January. That is a very gratifying result in view of our continually increasing imports, and the necessity of which exists for the American wage earner to be kept busy.

The January proportion of manufacturers' materials was largely in excess of that of January, 1904. The figures were \$40,500,000 against \$37,000,000, an increase of \$12,500,000 in a single month, or one-third more. What that one-third means to the American wage earners their weekly pay envelopes can best tell.

For the seven months ended January, 1904, manufacturers' materials formed \$236,700,000 of our \$626,000,000 imports against \$254,000,000 of \$565,000,000 in the same months of 1902, an increase of \$32,700,000, or more than half \$61,000,000 increase in the total. This result is in every way comforting, as the busy American factory means the busy everything else.

Tariff revisionists should take note of the fact that of the \$287,700,000 manufacturers' materials imported in the seven months of this fiscal year no less a proportion than \$106,000,000 worth entered free of duty.

By manufacturers' materials is meant two classes—viz, "articles in a crude condition ready for manufacturing" and "articles wholly or partially manufactured, for use in manufacturing." The increases referred to are almost entirely in the first class. That is still better for the wage earners and all concerned.

It is interesting to note the stages by which materials for manufacturing have increasingly entered into our imports generally. These stages by fiscal years are 1820, 16.6 per cent; 1850, 28.2 per cent; 1880, 34 per cent; 1900, 45 per cent; 1905 (seven months), 45.8 per cent, and in the single month of January, 1905, 50.1 per cent.

There is another and equally gratifying side to the story—the increasing entrance of exported manufactures into our general exports. Shipments of manufactures in January, 1905, amounted to \$40,513,000, or 33.37 per cent of the total exports for the month. This eminently desirable proportion has been reached by the following fiscal year stages: 1850, 13 per cent; 1870, 15 per cent; 1890, 17.8 per cent; 1900, 31.6 per cent; 1905 (seven months), 34 per cent.

For the seven months of this fiscal year exports of manufactures were \$202,000,000, against \$250,000,000 for the preceding similar months, an increase of \$52,000,000. In January, 1905, alone the increase was \$2,000,000. These increases in manufactures exported prove the assertion that all concerned benefit by the increase in manufacturers' materials imported.

It is also worth while noting the lines in which this imported material increase has chiefly occurred. Raw silk in January, 1905, was \$5,637,000, an increase over January, 1904, of \$1,800,000; wool, 25,000,000 against 10,000,000 pounds; India rubber, \$24,417,000 against \$20,800,000, an increase of \$5,557,000; hides, \$34,450,000 against \$27,708,000, an increase of \$6,731,000 (yet Massachusetts is sectionally clamoring against the tariff on hides) and tin, in pigs, bars, blocks, etc. (not in tin manufactures), 43,621,000 against 39,714,000 pounds.

These things being so, we need not worry, but rather rejoice that congress adjourned without disturbing the American factory and business generally by hasty interference with the Dingley protective tariff.—Walter J. Ballard.

The Democratic Floor Leader.
The announcement that John Sharp Williams is preparing to make a campaign for the senatorship from Mississippi in succession to Senator Money is not surprising. The senate has been the refuge before this of Democratic floor leaders who have failed. Senator Bailey, one of the most prominent members of the senate, was not a success as the leader of the house minority.

Being Trade to a Town.
Every farmer, every business man, it matters not in what part of the United States he resides, should take a lively interest in the good roads movement. There are few matters of such vital interest to the farmers, and the merchants of each and every town are just as much interested. Good, well kept roads leading to a town are sure to bring trade that would otherwise go to some other place. Then good roads mean economy; cost less for repairs, consequently lower taxation; mean that teams can haul loads from 50 to 200 per cent greater, and mean less wear and tear on horses and wagons. If there are poor roads in your section start a movement to improve them and you are doing the community a service worthy of highest commendation.

Wanted -Pupils in Piano, Organ, and Voice Culture. Especial attention given to beginners. Terms moderate. Miss Alice Browster, LaPorte, Pa.



The Best place to buy goods

Is often asked by the prudent housewife.

Money saving advantages are always being searched for.

Lose no time in making a thorough examination of the New Line of Merchandise Now on

EXHIBITION

STEP IN AND ASK ABOUT THEM.

All answered at

Vernon Hull's Large Store.

Hills Grove, Pa.

CENTRAL

State Normal School. LOCK HAVEN, PA.

J. R. FLICKINGER, Principal.

Final term of 15 weeks begins September 11. The facilities at this important school for doing first-class work, professional and academic, were never better than now. Its graduates are required to do a full year's teaching in the training school. Its faculty has the best American and European training.

Buildings modern. College Preparatory department location unexcelled. Fine Gymnasium. Expenses moderate. Free tuition to prospective teachers.

Address for illustrated catalogue, the Principal.

NOTICE.—Every policy holder of the F. & M. Home Fire Insurance Co., whose post office address has been recently changed is requested to send (by postal or otherwise) the new address and No. of the policy to the Secretary at Forksville, R. D. Lancaster, M. R. Black, Sec'y, President.

BUCKNELL UNIVERSITY.—JOHN HOWARD HARRIS, President. College: Courses in Arts, Philosophy, Science, Chemistry, Biology, Civil and Electrical Engineering, with shop work. Department for Women, comprising College, Institute, Art and Music courses. School of Music open to both sexes. Academy for young men and boys.

For catalogue etc. address the Registrar, Wm. C. Gretzinger, Lewisburg, Pa.

Bids will be received for delivering a car load of anthracite stove coal at Laporte Borough schoolhouse. Bids to be in not later than Saturday September 23, 1905. Board reserves the right to accept or reject any or all bids.

A. J. Bradley, Pres. A. H. Buschhausen, Sec'y.

Executrix Notice.

In re: Estate of Sabathiel Mead, late of the Borough of Laporte, Sullivan County, Pa., deceased. Notice is hereby given that letters testamentary upon the estate of said decedent have been granted to the undersigned. All persons indebted to the said estate are requested to make payment, and those having claims or demands against the same will make them known without delay. Mrs. ELEFTA MEAD, Executrix, T. J. KEELER, Laporte, Pa., Power of Attorney, Sept. 26, 1905.

COLEYS KIDNEY PILLS
Makes Kidneys and Bladder Right
PILLS
Saves Costly Life

John D. Reeser's Big Store, Bank Block, Dushore, Penn'a

COATS.

COATS.

Latest arrivals in New Winter Suits and Coats. There are the finest styles and materials, best you can buy for the money in Sullivan county. Blank coats, the finest line you would wish to see. Come in and see our immense stock. Will be pleased to show you.

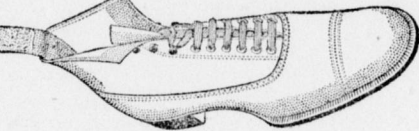
MILLINERY. Your wants can be supplied here. You will not only get the best and most stylish goods, but you'll save from one-third to one-half of what you buy because they are marked so very reasonable and the price within reach of every one.

Remember we carry a full and complete line in Coats, Furs, Dry Goods, Millinery, Shoes, Comforts, Blankets, Underwear, Curtains, Carpets, Rugs, Sweaters, Trunks, Suitcases, Telescopes, Satchels, Crochery, Flour and Feed Groceries.

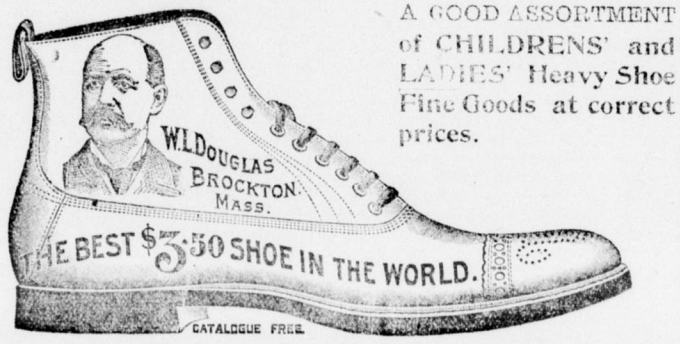
John D. Reeser's Big Store, Bank block DUSHORE.

Cultivate the Habit of buying reputable goods from a reputable concern.

We are agents for W. L. DOUGLAS SHOES from 2.50 to 5.00 pair.



Wood School Shoes for boys has no equal. Tracy's Shoes for ladies are, we find, always satisfactory.



A GOOD ASSORTMENT of CHILDREN'S and LADIES' Heavy Shoe Fine Goods at correct prices.

Clothing Made to Order All have the right appearance and guaranteed good in both material and workmanship and price. We also manufacture Feed, the Flag Brand. It is not cheap, but good. Is correctly made. Ask your dealer for it or write us for prices.

NORDMONT SUPPLY Co. General Merchants, PROPRIETORS NORDMONT STEAM MILL, NORDMONT, PA.

For November Only.

We are going to move our immense stock of Bedroom suits to make room for our Christmas stock. In order to move them quickly

We are going to cut the Price during the month of November to such a degree that it will pay you to buy now, even if you do not want the suit for another year.

THIS REDUCTION is going to be for cash, but the cut is going to be so great that it will pay you to borrow the money to purchase one or more of them. We are headquarters for Blankets and Comforts.

Holcombe & Lauer, Furniture & Undertaking DUSHORE, PA. TELEPHONE.

MEN WANTED at the American Car and Foundry Co's. works at Berwick, Pa.

Able bodied men can find steady work at fair wages in this great plant. An increase of force necessary because of extension of works. Call in person at the Employment Office of the Company in Berwick.

WINCHESTER FACTORY LOADED SHOTGUN SHELLS "New Rival," "Leader," and "Repeater" ALL DEALERS KEEP THEM.

Williamsport & North Branch Railroad TIME TABLE. In effect Monday, Sept. 1, 1905.

Table with columns for Read down, Read up, Stations, and Times. Includes stations like Halls, Pennsdale, Hughesville, Picture Rocks, Lyons Mills, Chamouni, Glen Mawr, Beechgrove, Suney Valley, Somestown, Nordmont, Mikesom, Laporte, Ringdale, Bernice Road, Satterfield.

S. D. TOWNSEND, Gen. Manager, Hughesville. D. K. TOWNSEND, Passenger Agent.

Reduction Sale of SHOES. Great Bargains for everyone.

J. S. HARRINGTON, Dushore, Pa

FIRST NATIONAL BANK, HUGHESVILLE, PA. CAPITAL STOCK \$50,000 DeWITT BODINE, President. JEREMIAH KELLY, Vice Pres. W. C. FRONTZ, Cashier.

DIRECTORS: DeWitt Bodine, Jacob Per, Peter Reeder, Jeremiah Kelly, Wm. Frontz, W. C. Frontz, James K. Boak, John C. Laird, E. P. Brenholtz, Peter Frontz, C. W. Sones, Daniel H. Poust, John Bull.

A POINTER. "Porcelain Enamel Paint" and "Porcel-line." RINALD BROS., PHILADELPHIA.

WISO'S CURE FOR CONSUMPTION. CURES WHERE ALL ELSE FAILS. Best Cough Syrup. Tastes Good. Use in time. Sold by druggists.