

REPUBLICAN NEWS ITEM.
CHARLES L. WING, Editor.

Published Every Thursday Afternoon
By The Sullivan Publishing Co.
At the County Seat of Sullivan County,
LAPOORTE, PA.

W. C. MASON, President.
THOS. J. INGHAM, Sec'y & Treas.
Entered at the Post Office at Laporte, as
second-class mail matter.

Political Announcement.

We are authorized to announce the name of W. M. Botsford of LaPorte Twp. as a candidate for County Commissioner, subject to the action of the Republican county convention.

We are authorized to announce the name of Boyd P. Bennett of Shrewsbury Twp. as a candidate for County Commissioner, subject to the action of the Republican county convention.

FINE PARTY FERVOR

Gratifying Result of Republican Canvass of the State.

THE COUNTY CHAIRMEN REPORT

Predictions That the Majority Will Be the Largest Ever Given in an "Off Year" Campaign.

[Special Correspondence.]

Harrisburg, July 18.

A canvass of the state has just been completed through the chairmen of the Republican county committees, and it shows a very gratifying condition of affairs from a Republican standpoint.

The party is united and harmonious, and there is a splendid feeling manifested among the rank and file of the organization. That Pennsylvania will make a very creditable showing at the coming election is apparent from reports that come from the several counties. In order that at the very outset of the canvass there might be definite data on hand regarding the feeling in the different sections of the state, Chairman Wesley R. Andrews, of the Republican state committee, sent to each of the county chairmen a letter soliciting detailed information as to conditions and sentiment in their respective localities.

In this letter Chairman Andrews said that he fully realized that the phenomenal Republican majority polled in Pennsylvania last fall was largely due to the great issues then pending before the American people and the fact that both national and state candidates were running.

A Letter of Inquiry.

Continuing, Chairman Andrews said: "There being no national or congressional ticket in the field this year, it can scarcely be expected that the majority will be as large as last; nevertheless it is exceedingly desirable that the full vote be gotten out, particularly in view of the fact that a noticeable decrease in the majority would invite the criticism of our opponents who would try to make it appear that the Republicans of Pennsylvania were no longer in accord with the policies of the national administration.

"Again, a large falling off in the Republican vote this year would inspire the opposition to make strenuous efforts in the congressional districts in 1906, in the hope of reducing the Republican representation from Pennsylvania in the national house of representatives, and which, if successful, might imperil the election of a Republican speaker, and thereby seriously embarrass the administration of President Roosevelt. In view of the difficulties that might be occasioned by the failure to get out the Republican vote in November next I am led to thus early address you, and to urge the necessity of your perfecting the organization in your county at the earliest possible date, and of conducting thereafter an energetic campaign until the curtain rings down on Tuesday, November 7."

Republicans Standing True.

The chairman supplemented this with a request for a report regarding the political outlook and inquiring whether it would be reasonable to expect that a full vote can be polled. In response to this letter, Chairman Andrews has received answers from every Republican county chairman in the state and he is more than delighted with the information they impart. "I do not recall an instance in my years of political work," said Colonel Andrews, in discussing this correspondence, "when I have had such prompt and highly satisfactory replies to a letter of inquiry of this character so early in a political contest. All the letters indicate the Republicans of Pennsylvania are standing true to their party colors, and that they will be heard from in no uncertain tones in November next as loyally supporting the entire Republican ticket."

Many of the letters gave not only the opinions of the county chairmen, but the latter quoted other leading Republicans in their respective counties, endorsing their statements as to the feeling among the voters.

People Contented and Happy.

"Our county is standing steadfast in the Republican column," wrote one of the chairmen. "We will give a larger majority than usual in an off-year campaign. Our people are contented and happy. They believe in Roosevelt and they propose that the Republican

party of Pennsylvania shall herald to the world in November next that the Keystone state is not faltering in her loyalty to the national administration, and will be found next year electing a solid Republican delegation to congress to support the president in his progressive American policies."

"Insurgency and mugwumpery have no foothold in this county," reported another of the chairmen. "We are all in line for the whole Republican ticket. While we may not get out as many votes as we did for President Roosevelt, we will more than hold our own for a state election, and our majority will be above the average. I hear of absolutely no dissent, while, on the other hand, there is an ardent and aggressive Republican spirit evinced by the young men of this section."

From one of the northern tier of counties the chairman sent this message:

"Put our county down for fully as large a majority as we polled at the presidential election. This may seem strange, but a canvass shows that we are going to get large accessions from men who last year voted the Demo-

cratic ticket for the last time. I don't know what is to become of the Democratic party up our way. Old-time Democrats see no hope for their party in the future. They are satisfied with the condition of affairs throughout the country, and are going to vote with us next November. Roosevelt has captured many of them, and they are going to be with us from now on. Our people are prosperous."

Coal Mining Regions Loyal.

Throughout the anthracite coal region there appears to be an unusually confident spirit shown in the correspondence received by Chairman Andrews. One chairman from this region among other things said:

"Every county in the coal mining districts of this state will be found 'standing pat' with Roosevelt and the Republican party. Our men are employed and contented. They have no concern as to the future, and they are determined to vote the full Republican ticket. They believe in letting well enough alone. They want no change, and cannot be switched from the Republican ticket by any arguments or chicanery of independent Republican or other assistant Democrats."

One of the western county chairmen, after predicting that his county would increase its Republican majority over the highest figure ever given in an off year, added:

"I bank upon this estimate because after having interviewed several hundred of our active Republicans I discovered a remarkable condition of affairs. We have for years been bothered with an element which, while professing Republican principles, have always found one pretext or another to vote against our ticket.

"Kickers" Stop Kicking.

"They do not comprise over three hundred voters all told, but three hundred voters for the ticket means quite a difference in the size of the majority. There will not be five per cent. of these old-time 'kickers' against us this fall. They may all get into line before election day. Stalwart Republicanism seems to be in the air, and that is why you may look for a splendid showing from our county; in fact, I believe you will have the same reports from all parts of this section of the state from what I hear in travelling on trains."

All of Chairman Andrews' letters told practically the same story. The majority will surely be above the average for an "off-year."

There was no room to question the intense party fervor which exists.

PENROSE AND KNOX

They Stand Well With the President, and Are Working in Harmony.

Washington, July 18.—Members of the Pennsylvania official colony here are still talking about the conference which Senator Knox held with President Roosevelt last week at Oyster Bay. There is no doubt of the fact that Senator Knox is one of the closest men in the country to the president. Roosevelt has great respect for his judgment and it is known that questions of the highest importance were discussed at this conference.

Pennsylvania's two United States senators stand well with the president, and they are working in absolute harmony in looking after the interests of their constituents in the Keystone state. Senator Penrose, in his last visit to the White House, which was just before the Roosevelt family left on their summer vacation, had a very satisfactory talk with the president, and the latter showed his appreciation of the cordial support of the senior senator from Pennsylvania by giving him two important consular appointments that very day.

One of these places went to Maxwell Kennedy Moorehead, of Pittsburg, who was appointed consul to a desirable post in Canada, and the other was landed by B. F. Chase, former chairman of the Clearfield county Republican committee, who goes to Catania, Italy.

Probably in no other state in the union do the two United States senators work in greater harmony than do Senators Penrose and Knox.

Every now and then reports to the contrary emanate from Philadelphia, but they are absolutely unfounded.

Senator Knox in his recent interview in Pittsburg showed that he is in full sympathy with the Republican organization in Pennsylvania and that he believes that the Republican party is quite competent to manage its own affairs without seeking advice or assistance from Democrats or others who are not good Republicans.

John D. Reeser's Big Store, Bank Block, Dushore, Penn'a

MILLINERY SACRIFICED.

Now is a good time to select your Millinery as it is greatly reduced and a bargain to you. It is marked below cost and a fine assortment to select from.

SHIRTWAISTS. Have a large assortment of Shirtwaists ranging in price from \$1.00 to 2.75 and very neat designs. Now is a splendid time to come in and see what we offer.

LACE CURTAINS. New line just received and ranging in price 75c to 4.00 a pair in white and ecru and pretty designs.

DRESS GOODS. This department is well stocked with the latest and up-to-date goods and the price within reach of everyone; in all colors to suit ones fancy. **WASH FABRICS** beautiful wash materials in the height of season's style, but the progressive style of this store demands that the season's goods must be sold in season, so they have been marked down.

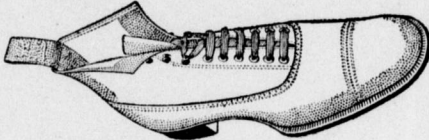
Remember we carry a full line in Millinery, Dress Goods, Shoes, Carpets, Rugs, Crockery, Suit Cases, Trunks, Satchels, Telescopes, Groceries, Feed and Flour.

John D. Reeser's Big Store, Bank block

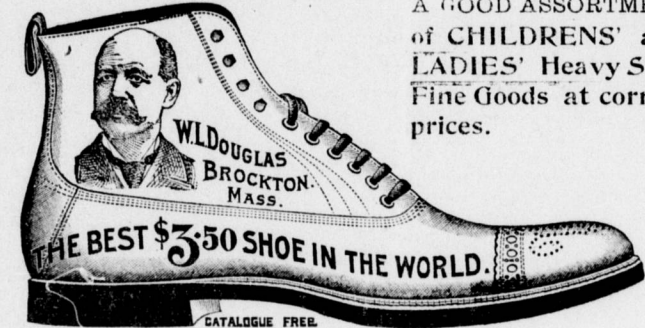
DUSHORE.

Cultivate the Habit of buying reputable goods from a reputable concern.

We are agents for W. L. DOUGLASS SHOES from 2.50 to 5.00 pair.



Wood School Shoes for boys has no equal. Tracys Shoes for ladies are, we find, always satisfactory.



A GOOD ASSORTMENT of CHILDREN'S and LADIES' Heavy Shoe Fine Goods at correct prices.

Clothing Made to Order

All have the right appearance and guaranteed fits in both material and workmanship and price etc.

We also manufacture Feed, the Flag Brand. It is not cheap, but good. Is correctly made. Ask your dealer for it or write us for prices.

NORDMONT SUPPLY Co.

General Merchants, PROPRIETORS NORDMONT STEAM MILL, NORDMONT, PA.

The Way to Buy Carpet

Is to come right here to headquarters and get them direct from the mills. We do not handle any job stock or dropped patterns, but will sell you a good honest carpet at a good honest price. Come in and see our

BRUSSELS INGRAIN

Just what you want a Brussels Carpet at an Ingrain price. Get our prices on 9 x 10 Rugs, we have them from the cheapest to the best. Ask to see our dust proof Carpet Lining.

Holcombe & Lauer, Furniture & Undertaking DUSHORE, PA.

TELEPHONE.

FIRST NATIONAL BANK, HUGHESVILLE, PA.

CAPITAL STOCK \$50,000
Surplus and Net Profits, 50,000.
Transacts a General Banking Business. Accounts of Individuals and Firms solicited.
DeWITT BODINE, President.
JEREMIAH KELLY, Vice Pres.
W. C. FRONTZ, Cashier.
DIRECTORS:
DeWitt Bodine, Jacob Per, Peter Reeder, Jeremiah Kelly, Wm. Frontz, W. C. Frontz, James K. Boak, John C. Laird, E. P. Brenholtz, Peter Frontz, C. W. Sones, Daniel H. Poust, John Bull.

Don't Tobacco Spit and Smoke Your Life Away.

To PATENT Good Ideas may be secured by our aid. Address, THE PATENT RECORD, Baltimore, Md.

MONEY

To Cure Constipation Forever.

Take Cassarets Candy Cathartic. 10c or 25c. C. C. C. fail to cure, druggists refund money.

PISO'S CURE FOR CONSUMPTION

Summer closing hours: The store will close Wednesday at 12 o'clock noon. All other days at 5 o'clock, except Saturday at 9:30.

The Shopbell Dry Good Co., 313 Pine Street, WILLIAMSPORT, PA.

- Laces** There's a beautiful show of Laces for Summer Dresses and Lingerie at the Lace Counter now. Some of the daintiest designs from the Best Lace makers. Valenciennes Laces which are seen on numerous Wash Dresses and Waists this season, we show a fine assortment of patterns and widths.
- Made-Up Sheets** Figure out the cost of material and the making and compare with the ready made ones we sell and you will buy them every time.
Plain Hemmed Sheets for 50c to 70c.
Hemstitched Sheets 35c AND 75c.
Unbleached Sheets for 50c to 65c.
- Ladies' Neckwear** Nothing could be daintier than the new neckwear we have ready for you to look at and buy. Wash Stocks in plain, white, white with colors, plain black and black with white. Fancy embroidered Silk Stocks in black, white and colors.
- White Goods** If you are interested in White Dress and Waist Materials come in. You'll find yourself well repaid. The new designs are distinctly new and the prices are as decidedly cheap.
- Umbrellas** We have a good assortment for rain or sun in Gloria, Union Tableta or All Silk Covers, 26 or 28-inch with handsome Horn, Ebony, Silver Mounted and Natural sticks and Handles. Prices vary from 50c to \$5.
- Pillow Cases** It doesn't pay nowadays to make your own, big factories make them cheaper. Plain Hem Pillow Cases for 10c to 20c.
Hemstitched Pillow Cases for 12 1/2c to 22c
- Bedspreads** Will you test the value of your spreads? Here are three numbers and all are worth more money. They are extra large size, neat Marseilles patterns hemmed, ready for use; the prices are 97c 1.25 1.39
Better qualities of Marseilles and Satin Finished Quilts up to 3.50.
- How About Towels?** No better time to supply your wants than now.
Huck Towels, 18x38 for 12 1/2 cents.
Hand Spun Linen Towels, 20x40, for 30 cents.
Fine Damask Towels, up to \$2.00

Williamsport & North Branch Railroad TIME TABLE.

In effect Monday, June 1, 1905.

Read down				Flag stations where time is marked "F"												Read up			
P. M.	P. M.	P. M.	P. M.	A. M.	A. M.	A. M.	A. M.	A. M.	A. M.	A. M.	A. M.	A. M.	A. M.	P. M.	P. M.	P. M.	P. M.		
10 15	12 50	4 20	5 25	10 22	7 51	Halls	6 20	7 35	10 10	12 15	4 00	5 05	1000				
10 20	12 55	4 25	5 30	10 25	7 55	Pennsdale	6 15	7 30	10 05	12 12	3 56	5 00	9 55				
10 30	1 05	4 32	5 40	10 34	8 02	Hughesville	6 02	7 20	9 55	12 00	3 45	4 50	9 45				
.....	1 13	4 39	5 48	10 44	8 09	Pietre Rocks	9 45	11 52	3 36	8 29				
.....	1 19	4 45	Lyons Mills	11 47	8 24				
.....	1 26	4 52	Chamont	11 44	3 28	8 17				
.....	1 34	4 59	Glen Mawr	11 36	3 22	8 10				
.....	1 40	5 06	Strawbridge	11 27	3 15	8 06				
.....	1 45	5 05	Beech Glen	11 21	3 09	8 03				
.....	1 50	5 07	Munsey Valley	11 18	3 07	8 00				
.....	5 13	Sonestown	11 00	3 00	7 55				
.....	5 28	Nordmont	9 35	7 38				
.....	5 45	Mokoma	7 18				
.....	5 45	Laporte	9 12	6 59				
.....	5 58	Ringdale	9 00	6 50				
.....	6 05	Bernice Road	8 53	6 50				
.....	6 09	Satterfield	8 50	6 35				
P. M.	A. M.	A. M.	A. M.	A. M.	A. M.	A. M.	A. M.	A. M.	A. M.	A. M.	A. M.	A. M.	A. M.	P. M.	P. M.	P. M.	P. M.		
3 05	6 30	8 45	Sonestown	8 25	11 10	5 10		
4 05	7 30	9 55	Eagles Mere	7 35	10 00	4 10		
6 25	9 49	Dushore	7 56	6 28		
7 26	10 50	Towanda	7 05	5 30		
.....	Wilkes Barre		
5 00	4 00	12 29	10 00	7 30	Williamsport	6 30	10 39	12 39	5 37	10 31		

S. D. TOWNSEND, Gen. Manager, Hughesville
D. K. TOWNSEND, Passenger Agent.

Reduction Sale of SHOE. Great Bargains for everyone.

J. S. HARRINGTON, Dushore, Pa