

# Republican News Item.

VOL. IX. NO. 32.

LAPORTE, SULLIVAN COUNTY PA., THURSDAY

JANUARY 26, 1905.

75 TS. PER YEAR

## This Is the Place To Buy Your Jewelry

Nothing in Town to Compare With  
the Quality that We are Giving  
You for the Low Price Asked.

Quality and moderate prices makes a force that irresistibly draws into our store the best patronage of this section. Many years here in business, always with a full line of goods above suspicion; chosen with a care and judgment commensurate with its desirability and adaptability to refine taste, makes our store a safe place to invest.

Repair work done on short notice and guaranteed, by skilled workmen. Your orders appreciated.

**RETTENBURY,**  
DUSHORE, PA. The Jeweler.

## COLE'S HARDWARE.

No Place Like this Place  
For Reliable

**STOVES and RANGES,**  
COAL OR WOOD.  
**HEATERS;**

ONE OF WINTER'S GREAT DELIGHTS.

House Furnishing Goods, Tools of Every  
Description, Guns and Ammunition.

Bargains that bring the buyer back.  
Come and test the truth of our talk.

A lot of second hand stoves and ranges for sale cheap.  
We can sell you in stoves anything from a fine Jewel Base  
Burner to a low priced but satisfactory cook stove.

Hot Air, Steam and Hot Water Heating and  
General Repairing, Roofing and Spouting.

**Samuel Cole, Dushore, Pa.**

**The Shopbell Dry Good Co.,**  
313 Pine Street,  
WILLIAMSPORT, PA.

January Sale, Muslin Underwear.

This week, we begin an important sale of Muslin  
Underwear, at special prices, that is worthy of more  
than the usual attention of muslin underwear sales. Every  
garment is entirely new and the prices are very much  
less than you have been paying for equal value.

### For 10 Cents

Ladies' Corsets Covers; Children's Drawers, 2 to 6 years; Boys' and Girls'  
Twilled Muslin Waists; Children's Skirts, 1 to 3 years, and Infant's Dresses,  
Neck and Sleeves Edged with Lace, for 10c.

### For 15 Cents

Ladies' Corset Covers, edged with lace or homestitched ruffles; Ladies'  
Drawers, with ruffles; Children's Plain or Ruffled Drawers, sizes 2 to 8; Children's  
Waists and Infant's Dresses with yoke and insertion, for 15 cts.

### For 55 Cents

Ladies' Gowns, either square or V neck, tucked yoke or lace or embroidery  
insertions; Ladies' Drawers with Flounce and Tucks; Ladies' Long and Short  
Skirts, with hemstitched ruffle; Corset Covers daintily trimmed with lace and  
ribbon, and Infant's Dresses, for 25c.

### For 50 Cents

Ladies' Corset Covers with lace embroidery and ribbon; Ladies' Drawers  
with deep flounce edged with embroidery or lace; Ladies' Long Skirts; Ladies'  
Short Skirts with lace edge—several styles of gowns to choose from, for 50c

### For 75 Cents

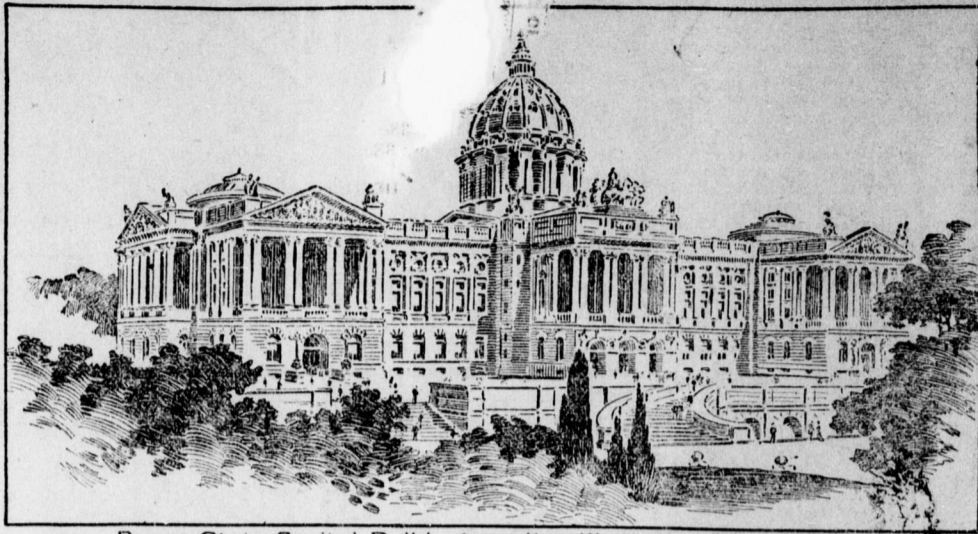
Ladies' Gowns with tucked yoke, lace embroidery insertion; Ladies' Long  
Skirts, with tucked flounce or insertion and lace edge; Ladies' Drawers with deep  
flounce trimmed with tucks and embroidery or lace. A large line of Corset Covers  
daintily trimmed with fine lace and embroidery, excellent values for 75c.

### For \$1.00

We show a large line of Ladies' Muslin, and Cambrie Underwear elaborately  
trimmed with fine laces and embroideries; the best assortment we ever showed for  
\$1.00

In connection with this special sale of Muslin Underwear we will have displayed  
a large line of the finer grades of Muslin and Cambrie Under Garments,  
that are elaborately trimmed with dainty laces, embroidery and ribbons. Quality  
considered, the prices will be very low.

**Subscribe for the News Item**



Penna. State Capitol Building as it will appear when completed.

### CAPITOL BEAUTIES HIDDEN

**Park Should Be Extended to Af-  
ford Setting For State Building.**

A bill will shortly be presented in the state legislature at Harrisburg for the extension of the state capitol park, a project which has been urged for years, and which in the opinion of everyone who has seen the new state capitol, is needed for the magnificent structure is to be given an adequate setting. This measure has been outlined and will receive the hearty support of members of the legislature from all parts of the state.

The plan for park extension has been endorsed by Architect Huston, whose plans have been carried out for the new capitol, and to whom is due the splendor of the building which is rising on historic Capitol Hill. It has been a subject which has received periodical attention for many years, but which never took definite shape before. Now general interest in all parts of the state has been aroused, and since the proportions of the state's new official home can be seen it is realized that unless something is done to provide more room the structure, on which there has been expended a wealth of idea and millions of state money, will be practically hidden. A building notable for its stately appearance, its handsome decoration and beautiful material, is being built in the midst of a city, so that it will be unappreciated unless one goes almost beside it.

In order to appreciate this condition it is necessary to give some idea of the location of the state house at Harrisburg. The building is being erected on Capitol Hill, an eminence which is from eight to 15 feet above the streets in the heart of Harrisburg, and which is bounded on all sides by paved thoroughfares lined with business and residential buildings, some of which, especially on the side which it is proposed to take, are anything but beautiful. On the west side of the capitol park stretches the chief residence district of the city containing many fine homes, several of the city's largest churches, the new Y. M. C. A. building, one new theatre, the government's stately granite building and for which are projected a Masonic temple and a Roman Catholic cathedral, which will cost far over half a million dollars, in addition to other buildings. To extend on this side would be manifestly impossible because of the expense even though it is bounded two squares from the capitol by the beautiful Susquehanna.

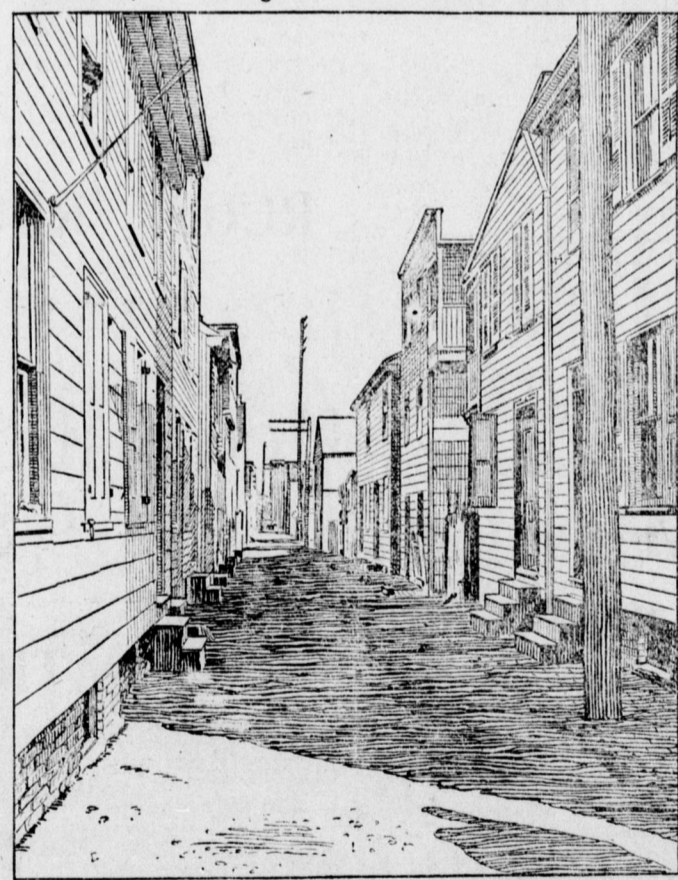
The proposed improvements are to be on the east side. If it had been destined by the founders and builders of the capitol to have it taken into the park some day it could not have been planned better. It has never been developed worth speaking about. It contains some industrial plants, none of them attractively built, a soap factory or two, a market and some small churches, the bulk of the buildings being small and many of them rickety frame buildings, characteristic of the poorest section of a city. Some idea of their character can be gleaned from the photographs presented.

Because of this growth of the city there are just two points from which there can be obtained good views of the new state house. One is on State street, west, where from a distance of a block a view embracing about half of the front of the building, with its flight of steps, can be had. Extension of the park there is considered out of the question because of the expense. On the east side State street gives the other view, equally circumscribed. At no place can there be obtained a view of the state house so that its decoration and graceful outline can be satisfactorily observed. On the side where it is proposed to make the extension of the park the capitol rises from a city street, towering so that even on the opposite side of the highway it is necessary to crane one's neck to see the balustrade on top of the main building.

The section which it is proposed to take contains four streets running



Toward Capitol Building from Fifth Street on North Avenue.



Looking west on South Avenue from Fifth Street.

north and south and an equal number running east and west, there being also several alleys whose removal would be a good thing for all concerned. This project has long been a favorite one with lawmakers and state officials to whom the eastern outlook from the capitol has been an eyesore, and who realize that at comparatively small cost the park can be extended so that the \$4,500,000 capitol will not be hidden, but can be given a setting like those of other states, and where the citizen of Pennsylvania may view with pride the unmatched capitol of his state.

The death of ex-Governor Nash of Ohio left a vacancy on the board of trustees of the Ohio State university. Governor Herick promptly appointed Hon. F. A. Dertbick, master of the Ohio state grange, to fill the vacancy.

Every deputy organizer should know the history of the Order by heart and be able to tell what it has done for the farmer.

Bradford county, Pa., has twenty-five granges, and eighteen of them own their own halls. Its membership is 2,350.

## THE GRANGE

Conducted by  
J. W. DARROW, Chatham, N. Y.,  
Press Correspondent New York State  
Grange

### THE ORDER FLOURISHING.

**Brief Reports of the Condition of the  
Grange in Various States.**

New Hampshire reports 266 subordinate and 19 Pomona granges, and 100 members of the Order were elected to the last legislature. Pennsylvania reports nearly 7,000 new members the past year. Maine now has 374 subordinate granges and 24 Pomona granges. The total state membership is 45,772. Thirteen new grange halls were erected the past year in that state, costing on an average \$3,700, the most expensive one costing \$14,500. One subordinate grange in that state has a membership of about 800. New York has organized 32 new granges the past year and has dedicated 7 grange halls. The gain in membership is between 5,000 and 6,000 for the year. Kansas has added 6,000 to the membership during the past year. One fire insurance company in that state carries risks to the value of more than \$3,200,000. Rhode Island reports fair prosperity for the grange. Mutual fire insurance companies report a saving of 50 per cent on the cost of insurance.

Maryland reports progress. Michigan has added eighty-one granges the past year, making 719 granges in the state, with 44,013 members. There are about twenty county and district fire insurance companies in the state, the average cost of insurance on each \$1,000 being about \$1.25 per annum. They have \$20,000 in the state treasury. Four hundred granges were owned by subordinate granges in that state. There are twenty-four in one county. Virginia is rapidly coming to the front. There are about 100 granges in good standing. New Jersey has increased its membership about 2,000 the past year.

### Topics For Discussion In the Grange.

Will the exclusive use of commercial fertilizers tend to impoverish land when used continuously?

Is the food value of a ton of corn either increased or diminished by putting it into a silo?

Should a farmer join the grange merely to make or save money by so doing?

Is the abolition of corporal punishment in our common schools proving a blessing or an injury to the youth of our country?

Is it possible for manufacturers of farm implements to sell direct to farmers and dispense entirely with agents?

Does improved machinery increase or decrease the cost of production of a crop, everything being taken into consideration?

Is it equitable and fair for one locality that has already built good roads to be taxed for the improvement of roads in other localities where roads are unimproved?

### The Subordinate Grange.

The subordinate grange is the basic stone of our Order, and without it we could not succeed, says State Master Gaunt of New Jersey. It is the strong link in the chain that binds this great farmers' organization together from ocean to ocean. The influence and usefulness of the Pomona state and national granges depend upon good work done by our subordinates. It behooves us as Patrons to look well to the great superstructure upon which the order rests. Let each be a farmers' school, where the mind and heart can be cultured, the vision be broadened and life made worth living.

### An Enterprising Maine Grange.

Wesaweskeag grange, up in Maine, is noted for something besides its name. This grange, we learn from the Maine Farmer, is to acquire title to a small farm property at South Thomaston, whereon it will erect or remodel one of the present buildings into a commodious grange hall. The hall will be on the second floor, with banquet hall, kitchen, pantry and other facilities on the first floor. This will involve an expense of about \$500, and the money for the entire deal is in sight. The property cost \$1,300.

### The Grange In Illinois.

We have added eight granges to our rolls during the year and increased our membership about 20 per cent. The profits to the membership, so far as reported for the three quarters past, by co-operation in buying supplies and disposing of products, were about 14 per cent as compared with the local prices. Our dealings reach from the disposing of products in the east to the buying of fruit in Washington and California.—Oliver Wilson, State Master of Illinois.

### The Grange In Rhode Island.

This little Roger Williams state, containing a little over 1,200 square miles, reports within its borders twenty-one subordinate granges and four Pomona granges. Frank E. Marchant is the worthy master.