

Republican News Item
 CHAS. LOREN WING, Editor.
 THURSDAY, MAY 17, 1900.
 "FIRST OF ALL--THE NEWS."
 The News Item Fights Fair.
 IT IS A PATRIOTIC HOME NEWSPAPER.

Published Every Friday Morning.
 By The Sullivan Publishing Co.
 At the County Seat of Sullivan County,
 LAPORTE, PA.

Subscription—\$1.25 per annum. If
 paid in advance \$1.00. Sample copies
 free. All communications should be ad-
 dressed to
 REPUBLICAN NEWS ITEM,
 Laporte, Pa.

(Special Correspondence.)
 Philadelphia, May 15.—Gen. Frank Reeder, chairman of the Republican state committee, was in this city yesterday supervising the improvements being put upon the new headquarters of the state committee, 1417 Locust street. The headquarters are now practically finished, the different offices have been assigned to General Reeder's staff of assistants and the task of getting the party organization in shape for the approaching campaign is already under way. While aside from this preliminary work little can be done until after the Republican national convention next month, General Reeder has the plan of campaign carefully mapped out, and he proposes that the policy of the party organization shall be aggressive from the very outset of the canvass. He is going to be in touch with the Republican national committee and the Republican congressional committee, and the county committeemen through the state will be constantly advised as to the policy that is to be pursued in meeting every move that may be made by the Bryanites and their Populistic allies. The news from the west indicates that the Bryan men and the leaders of the most influential wing of the Populistic organization have a perfect understanding as to the coming campaign and that they intend to make a determined and desperate effort to capture the presidency by fair means or foul. They are anxious to secure any advantage that might come through labor troubles in different sections of the country, and there is reason to believe that the Democratic and Populistic managers are not neglecting any opportunity to encourage a feeling of unrest among workmen and prompt them to make demands for increases in wages. There has been little heard of reductions in wages since McKinley's election. The movement has been upward. Many have had large increases in their wages and others have had their hours of labor shortened. There is work for all who seek it, and the condition of general prosperity in which the country finds itself can fairly be attributed to the present Republican national administration.

who believe in recognizing the will of the majority as a fundamental doctrine of their party. The Democrats have all to gain and nothing to lose in this game of practical politics. The Republican voters of Pennsylvania are beginning to appreciate this fact, and they will not be gotten to give encouragement and assistance to the political enemy merely to satisfy the ambition of a few disgruntled members of their party who are following a selfish and personal insurgent leadership.

MUST WIN CONGRESSMEN.
 Word has been received from the chairman of the Republican congressional campaign committee that there must be Republican gains from Pennsylvania at next November's election of members of congress. The Democrats are talking quite boastfully at Washington about their chances of carrying the next house of representatives and securing the power and patronage that goes with the organization of that body. Experience has taught that congressional elections are frequently involved in much uncertainty, even when there is no doubt of how the country is going to vote on the presidency. The national Republican leaders propose to bend every energy toward winning every doubtful congressional district, and they look for not less than four gains from Pennsylvania. There were ten Democratic candidates for congress elected in this state to the present house. Since the election Representative Joseph C. Sibley has repudiated the Democracy, and he was recently nominated for congress by the Republicans of his district. The others who were elected as Democrats to the present house from this state were Representatives McAleer, Barber, Green, Polk, Davenport, Ryan, Ziegler, Gaston and Hall. The Republicans of the Third district of this city declare that McAleer is not to have another term, and that he will be succeeded by a Republican. Select Councilman Henry Clay is the only Republican so far mentioned for this nomination, and should he be nominated a determined effort will be made to elect him.

The districts now represented by Congressmen Barber, Polk, Davenport, Ryan and Gaston it is thought will surely be carried by the Republicans this fall. The congressional campaign in Pennsylvania will be one of the features of the coming canvass, and it will be given close attention by the chairman of the Republican state committee.

PENNSYLVANIA IN THE CONVENTION.

Many Prominent Men Among the National Delegates From This State.

ALL ENTHUSIASTICALLY FOR MCKINLEY

Many Thousands from the Interior Counties Will Be Present as Spectators and a Large Number of Clubs Will Take Part in the Big Parade.

(Special Correspondence.)

Harrisburg, May 15.—Pennsylvania will be well represented at the coming Republican national convention. She will have next to the largest delegation on the floor of the convention, and although there is not apt to be any contest in which her 64 votes will figure as an important factor, the character and influence of the men in the delegations will be felt in the committee rooms and in the discussions of party policies at the hotels and in the private conferences of the party leaders. There will be found among the delegates from the Keystone state men of affairs in their respective districts and men who have gained prominence in the professions and in the commercial world and others who are identified with the immense manufacturing interests of the commonwealth. Colonel M. S. Quay, who is one of the delegates-at-large, will head the delegation, and he will be re-elected to represent Pennsylvania in the Republican national committee. He is at present a member of the executive committee of that body.

In a number of cases the political leaders of districts have stepped aside this year in order to allow business men, manufacturers and other admirers of President McKinley who do not ordinarily figure in politics to go to the national convention. It is a true blue McKinley delegation, and there is no need of instructions from the state or district conventions to bind the members of the delegations to McKinley.

Several districts have yet to elect their representatives. In the Cumberland-Adams-York district there is a contest over the national delegates. A dispute arose as to the representation to which York county was entitled in the conference. Both sides named Charles H. Mullin, of Cumberland, as one of the national delegates. For the other place Dr. Charles A. Dale, of York, is contesting the claim of John L. Hill, Jr., of Adams. United States Senator Boies Penrose, Secretary of the Commonwealth Grist, Congressman Bingham, former Congressman Williams, Israel W. Durham and David H. Lane, the Philadelphia leaders, are among the district delegates. Governor Stone and Attorney General Elkin, who were proposed for delegates-at-large, declined to allow the use of their names, as they wished the honors to go to others.

In commenting upon the struggles of the insurgents and their plans to defeat the stalwart Republicans of Pennsylvania in the contest over the United States senatorship, former Congressman Brumm, of Schuylkill, said as to that county, that the regular Republicans will gain six and probably seven votes. He concedes the election of one Democratic assemblyman.

I AM AGENT FOR THE
Celebrated Pitkin Paint
 THIS PAINT IS FULLY GUARANTEED.
 CALL AND SEE COLOR CARD. James McFarlane.

House Cleaning

If you are short of anything when you rearrange your house this spring send to Holcomb & Lauer's store and get it, they keep everything in the house furnishing line that you can think of. If you have not been in their store to inspect their immense stock, do so at once, and be convinced that you do not have to go out of the County to get what you want.

Telephone call, Hotel Obert.
HOLCOMBE & LAUER,
 Furniture and Undertaking, **Dushore, Pa.**

Williamsport & North Branch Railroad
TIME TABLE.
 In effect Monday Dec. 11, 1899.
 Corrected to February 22 1900

Read down				Corrected to February 22 1900				Read up			
A. M.	M. P.	M. P.	M. P.	A. M.	M. P.	M. P.	M. P.	A. M.	M. P.	M. P.	M. P.
8 05	10 25	12 55	4 15	5 25	7 45	10 05	12 25	7 50	9 45	12 05	4 00
8 09	10 30	1 00	4 18	5 30	7 50	10 10	12 30	7 55	9 50	12 10	4 05
8 20	10 40	1 10	4 27	5 40	8 00	10 20	12 40	8 00	9 55	12 15	4 15
10 48	4 35	5 48	8 08	10 28	12 48	4 30	5 43	8 10	10 30	12 50	4 20
10 51	4 39	5 51	8 11	10 31	12 51	4 33	5 46	8 13	10 33	12 53	4 23
10 54	4 41	5 54	8 14	10 34	12 54	4 36	5 49	8 16	10 36	12 56	4 26
11 02	4 48	6 02	8 21	10 42	13 02	4 41	5 54	8 21	10 41	13 01	4 31
11 11	4 56	6 11	8 29	10 51	13 11	4 49	6 02	8 29	10 49	13 09	4 39
11 15	5 01	6 15	8 33	10 55	13 15	4 53	6 06	8 33	10 53	13 13	4 43
11 19	5 05	6 19	8 37	11 00	13 19	4 57	6 10	8 37	10 57	13 17	4 47
11 25	5 11	6 25	8 43	11 06	13 25	5 03	6 16	8 43	11 03	13 23	4 53
	5 26	6 40	8 58	11 21	13 40	5 18	6 31	8 58	11 18	13 38	5 08
	5 43	6 57	9 15	11 38	13 57	5 35	6 48	9 15	11 35	13 55	5 25
	5 45	7 00	9 17	11 40	14 00	5 37	6 50	9 17	11 37	13 57	5 27
	5 50	7 05	9 23	11 45	14 05	5 42	7 00	9 23	11 42	14 02	5 32
	5 52	7 07	9 25	11 47	14 07	5 44	7 05	9 25	11 44	14 04	5 34
	5 57	7 12	9 31	11 52	14 12	5 49	7 10	9 31	11 49	14 10	5 39
	6 02	7 17	9 37	11 57	14 17	5 54	7 15	9 37	11 54	14 15	5 44
	6 05	7 20	9 40	12 00	14 20	5 57	7 18	9 40	11 57	14 18	5 47
	6 15	7 30	9 50	12 10	14 30	6 07	7 28	9 50	12 07	14 28	5 57

Connection with Phila. & Reading at Halls For Philadelphia, New York and intermediate stations—Leave Williamsport 7:42 a.m., 10:00 a.m., Arrive Halls 7:59 a.m., 10:19 a.m. For Shamokin and intermediate stations—leave Williamsport 4:30 p.m., arrive Halls 4:51 p.m.
 From Phila., New York and intermediate stations—leave Phila. 10:21 a.m. and 11:36 p.m.; leave New York via Phila. 7:30 a.m., 9:00 p.m.; leave New York via Tamaqua, 9:10 a.m. Arrive Halls, 6:24 a.m. and 5:21 p.m.
 From Shamokin and intermediate stations—leave Shamokin 8:10 a.m. Arrive Halls 9:49 a.m.
 Connecting with L. V. R. R. at Satterfield. For Towanda and intermediate stations, leave Wilkesbarre 3:05 p.m.; arrive at Satterfield 6:25 p.m.
 For Towanda and intermediate stations, leave Bernice 6:40 a.m.; arrive Satterfield 7:04 a.m.
 For Wilkesbarre and intermediate stations—leave Towanda 6:45 a.m. and 10:30 a.m.; arrive Sat field, 7:52 a.m., 1:04 p.m.

A. T. ARMSTRONG,
 SONESTOWN, PA.
 DEALER IN
 Flour Feed and Groceries

13½ pounds of pure Lard for \$1.00
 Baking molasses, 25 to 50c.
 8 pounds Rolled Oats for 25c.
 7 pounds of Corn Starch for 25c.
 7 pounds of Laundry Starch for 25c.
 2 pounds of Rio Coffee for 25c.
 8 bars of Lenox Soap for 25c.
 No. 1 mackerel per pound 8c.
 Best Sugar Coated Hams @ 11c per lb.
 Buckwheat Flour 25 pound sack 74c.
 Buckwheat Flour 100 pounds, \$1.80.
 Yellow Corn per 100 pounds 90c.
 Corn Meal or Cracked Corn 90c.
 Corn, Oats and Barley Chop 90c.
 Wheat Bran 200 pounds \$1.50.
 Flour middlings, 140 pound sack \$1.40.
 Fine middlings 200 pounds \$1.60.
 Flour per sack \$1.00.
 Winter Roller per sack \$1.00.
 Good Flour 90c.
 Rye Flour 25 pounds, 50c.
 Graham Flour 12½ pounds 30c.
 Common Fine Salt per barrel \$1.20.

FREE TO EVERY READER
 who mentions this Ad. and sends us an order, we will make a 16x20 Cry-on Portrait in 51 inch Oak and Gilt frame, and give AWAY ABSOLUTELY FREE, the latest Oil Portrait, of Admiral Geo. Dewey, all complete for \$2.50. All work hand-finished and guaranteed to deliver. We will give during 1900 SPECIAL inducements to agents. Write to-day.
 Address all orders to
THE HOME ARTIST,
 HILLSGROVE, PA.
 To Cure Constipation Forever, Take Cascarets Candy Cathartic. 10c or 25c. If C. C. fail to cure, druggists refund money.

Made to Fit And Fit to Wear
 THIS IS THE BEST FITTING SHOE ON THE MARKET
 Guaranteed in Every Respect.

To Repair Broken Articles use
Major's Cement
 Remember MAJOR'S RUBBER CEMENT, MAJOR'S LEATHER CEMENT.



Educate Your Bowels With Cascarets.
 Candy Cathartic, cure constipation forever. If C. C. fail, druggists refund money. Beauty is found deep.
 Clean blood means a clean skin. No beauty without it. Cascarets, Candy Cathartic clean your blood and keep it clean, by stirring up the lazy liver and driving all impurities from the body. Begin to-day to banish pimples, boils, blotches, blackheads, and that sickly bilious complexion by taking Cascarets,—beauty for ten cents. All drug-gists satisfaction guaranteed, 10c, 25c, 50c.

SOLD ONLY BY
T. J. KEELER,
 LAPORTE, PA.

JENNINGS BROS.
 We keep in stock at our mills a complete line of dressed lumber in hemlock and hardwood.
 MANUFACTURERS OF
Gang Sawed and Trimmed Lumber.
 LOPEZ, PA.
 SPECIALTIES
 Hemlock Novelty or German Siding, Hemlock Ceiling 7-8 or 3-8 stick, Hemlock Flooring any width desired, Hemlock Lath both 3 and 4 feet long, Hardwood Flooring both Beech, Birch or Maple, The same woods in 3-8 ceiling. CORRESPONDENCY SOLICITED.

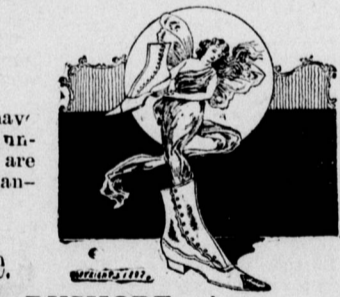


In a Pretty Pickle

is the woman who must entertain unexpected company—unless she is well supplied with canned and bottled groceries. If her pantry shelves are nicely lined with our famous brands of pickles, soups, vegetables, canned meats and fish and crackers, she is completely ready for any emergency. What's all we send you to-day?

ON DRY GOODS WE ARE IN THE LEAD
 WHY? Because we carry the Largest and Best line in the county. Because we have only new and attractive patterns to show. Because you will find no old goods on our shelves.
 We have just opened a new line of Gingham, Shirtings, muslins, etc., or the spring trade, which we would be pleased to have you inspect.

Perfectly Shaped Footwear



for women and men. We have a stock of women's shoes that is unequalled hereabouts. The shapes are dainty, the leather fine, the workmanship exquisite, and the fit perfect. Prices are right.
 Cash Paid for Country Produce.
E. G. Sylvara DUSHORE, A

Red Star Shoe Store
 NENS BOYS and YOUTHS
 SPECIAL BARGAINS

Men's tan and black fine shoes 5½ to 10, \$1.25 to 4.00. Boys' tan and black fine shoes 2½ to 5½, \$1.00 to 2.00. Youths' fine tan or black shoes 12 to 2, 90c to 1.25. Little gents tan and black 90c to 1.25, 8½ to 11 also 6 to 8, 75c to 90c.

LADIES' MISSES' AND CHILDREN'S SPECIAL BARGAINS

Ladies' fine lace shoes \$1.00 to 3.50. Ladies' fine button shoes 85c to 3.00. tan and black 50c to 2.00. Child soft soles 15c to 50c. Child shoes 3 to 8, 35c to 75c. Childs tan and black 8½ to 11, 75c to 1.15. Misses tan and black 12 to 2, 85c to 1.50.

If you are in want of good foot wear, cheap, go to
J. S. HARRINGTON.
 OPERA HOUSE BLOCK,
DUSHORE, PA.

MONEY To PATENT Good Ideas may be secured by our aid. Address: THE PATENT RECORD, Baltimore, Md. Subscriptions to The Patent Record \$1.50 per annum.