



Store Closes Daily at 6 P. M. Except Saturday Evenings, L. V. R. R. Paydays and Two Evenings Succeeding

PRE-INVENTORY SALE

As stated to you in our yesterday's advertisement, we will take inventory February 1st, and in the meantime, make offerings of seasonable merchandise at out of season prices. We want no remnants of any sort left. Most close cuts are at factory cost and appeal to thrifty buyers.

Furs

Regardless of price are out to cost to us, and cost to us means less than small dealers can buy them at, hence, any price you pay is better value for same money than you can get at many places. This means practically every fur at from 75c per piece to \$25.00.

Coats and Suits

Are a hobby with us. Our selections are unique and exclusive. New numbers have been inserted in our stocks within a week. Yet our stocks are too large in view of the unseasonable weather we have had. We are willing to part company with any garment in our store at FACTORY COST TO US.

Axminster Carpet

Pre-inventory offer without restriction as to quality. 10 kinds made, laid and lined at 88c. We are told on good authority that dealers charged you \$1.50 per piece. None sold to dealers.

Special for Wednesday, Jan. 10th

One lot of Men's half wool hose at 10c pair.

Misses' and Children's Tamoshanters

And toboggans of wool and camel's hair, a 50c value for 39c. In white, brown, navy and scarlet.

Upon special request from many of our patrons, we have again arranged to have our New York photographer here from Jan. 8th to 18th.

WE FILL MAIL ORDERS AND PREPAY FREIGHT OR EXPRESS ON PURCHASES OF \$5.00 OR OVER.

Outing Flannel Night Gowns

At 50, 75, 89 and 97c. Their value is one-third more if you will compare weight and finish with offerings no matter from what source. We also carry the out sizes in \$1.00 and \$1.25 value at 79c and \$1.00.

Children's Sleeping Garments

1 to 4 years at 47c, 6 to 8 years at 69c. The Dr. Denton's style.

Blankets and Comfortables of Wool and Cotton

We have settled the price to a point like coffee grounds in a pot. Cotton \$1.00 value at 69c. All others closed out. All wool 10-4, regular \$3.75 value, now \$2.98. All wool 10-4, regular \$4.98 value, now \$4.00. All wool 11-4, regular \$5.98 value, now \$4.98. Special values in Maish Laminated Cotton Comfortables. \$1.50 value at \$1.19, \$1.75 value at \$1.29, \$2.00 value at \$1.39, \$2.25 value at \$1.60, \$2.75 value at \$1.97. Complete line of lower grades at Big Store prices.

Outing Special

30 pieces outing, regular 19c value 8c. It would cost us 8c to replace it today on the present high price of cotton.

Pyrography Sets

The regular \$2.00 sets at \$1.79. Also many novelties in stamped pieces at from 10c per piece to \$1.00.

HILL & BEIBACH CAFE

Best of Everything Lockhart St. Sayre.

LEHIGH VALLEY R. R.

(In effect Dec. 1, 1934) Trains leave Sayre as follows: EASTBOUND. 12:27 A. M. Daily for Towanda, Tunkhannock, Pittston, Wilkes-Barre, Mauch Chunk, Allentown, Bethlehem, New York, Philadelphia, Baltimore and Washington. 2:35 A. M. Daily for Tunkhannock, Pittston, Wilkes-Barre, Glen Summit Springs, White Haven, Mauch Chunk, Allentown, Bethlehem, New York, Philadelphia, Baltimore and Washington. 7:00 A. M. (Waverly 6:45 A. M.) Week days only for Athens, Utter, Towanda, Montrose, New Albany, Dunmore, Baiter, Halls, Williamsport, Wyalusing, Laceyville, Tunkhannock, Pittston and Wilkes-Barre. 8:50 A. M. (Waverly 8:35 A. M.) Daily for Towanda, Tunkhannock, Pittston, Wilkes-Barre, Glen Summit Springs, White Haven, Mauch Chunk, Allentown, Bethlehem, New York, Philadelphia, Baltimore and Washington. 10:00 A. M. (Waverly 9:45 A. M.) Daily for Athens, Utter, Towanda, Montrose, New Albany, Dunmore, Baiter, Halls, Williamsport, Wyalusing, Laceyville, Tunkhannock, Pittston and Wilkes-Barre. 12:50 P. M. Daily for Towanda, Tunkhannock, Pittston, Wilkes-Barre, Glen Summit Springs, White Haven, Mauch Chunk, Allentown, Bethlehem, New York, Philadelphia, Baltimore and Washington. 3:10 P. M. Daily except Sunday, Black Diamond Express, Utter, Towanda, Tunkhannock, Pittston, Wilkes-Barre, Glen Summit Springs, White Haven, Mauch Chunk, Allentown, Bethlehem, New York, Philadelphia, Baltimore and Washington. 4:55 P. M. (Waverly 4:40 P. M.) Week days only for Athens, Utter, Towanda, Montrose, New Albany, Dunmore, Baiter, Halls, Williamsport, Wyalusing, Laceyville, Tunkhannock, Pittston and Wilkes-Barre. WESTBOUND. 1:58 A. M. Daily for Geneva, Buffalo, Niagara Falls, Toronto, Detroit, Chicago, St. Louis and points west. 3:40 A. M. Daily for Geneva, Rochester, Caladonia, Batavia, Buffalo, Connecticut for Niagara Falls and Toronto. 6:10 A. M. Daily for Lockwood, Van Hiten, Spencer, Ithaca, Trumansburg, Hayti Corners, Geneva, Rochester, Caladonia, Batavia, Buffalo, Connecticut for Niagara Falls, Toronto, Detroit and Chicago. 11:00 A. M. Week days only for Lockwood, Van Hiten, Spencer, Ithaca, Trumansburg, Hayti Corners, Geneva, Rochester, Caladonia, Batavia, Buffalo, Connecticut for Niagara Falls, Toronto, Detroit and Chicago. 3:40 P. M. Daily for Geneva, Rochester, Caladonia, Batavia, Buffalo. 5:00 P. M. Daily for Lockwood, Odessa, Bantick (Watkins) Valois, Lodi, Gilbert, Varick and Geneva. 5:42 P. M. Daily for Trumansburg, Ithaca, Hayti Corners, Geneva, Clifton Springs, Victor, Rochester, Caladonia, Batavia, Buffalo, Connecticut for Niagara Falls, Detroit, Chicago, St. Louis and points west. 6:35 P. M. Daily except Sunday, Black Diamond Express, for Geneva, Rochester, Buffalo, Niagara Falls, Detroit, Chicago, St. Louis and points west. 6:38 P. M. Daily for Lockwood, Van Hiten, Spencer, Ithaca, Trumansburg, Hayti Corners, Geneva and Manchester. AUBURN DIVISION. A. M. Week days only for Otego, Freeville, Cortland, Canastota, Groton, Morrisville, Auburn, Westport, North Star, Havana, Syracuse, Utica and Albany. P. M. Daily for Otego, Freeville, Cortland, Canastota, Groton, Morrisville, Auburn, Syracuse, Utica and Albany.

Hendricks Has Not Resigned. ALBANY, N. Y., Jan. 9.—Persistent reports that Francis Hendricks, state superintendent of insurance, would not accept reappointment when his term expires in February next were given fresh impetus here by the publication of a statement that there are five candidates in Syracuse alone for the position. When the matter was brought to the attention of Governor Higgins he said: "It is news to me that there are five candidates for the position. Superintendent Hendricks has not resigned, his term of office has not expired, and there is no vacancy in his office. That is all I care to say."

Four Burned to Death at Cove, Pa. HUNTINGDON, Pa., Jan. 9.—In the destruction by fire of their home at Cove, Pa., Robert Adams, his wife and two children were burned to death. The fire resulted from a defective fuse.

FINANCIAL AND COMMERCIAL.

Closing Stock Quotations. Money on call firm at 4 to 7 per cent. Prime mercantile paper, 10 1/2 to 11 per cent. Exchange, 137.50 to 137.75; balances, 138.25 to 140. Closing prices: Amal Copper, 109; N. Y. Central, 104 1/2; Atchafalaya, 94 1/2; North & West, 80 1/2; B. & O., 114 1/2; Penn. R. R., 144 1/2; Brooklyn R. T. & M., Reading, 142 1/2; C. C. & St. L., 107; Rock Island, 124 1/2; Ches. & Ohio, 56 1/2; St. Paul, 132 1/2; Chi. & North, 22; Southern Pac., 64 1/2; D. & H., 22; Southern Ry., 27 1/2; Erie, 10 1/2; South. Ry. pf., 10 1/2; Gen. Electric, 17 1/2; Sugar, 12 1/2; Ill. Central, 17 1/2; Texas Pacific, 12 1/2; Lackawanna, 6 1/2; Union Pacific, 12 1/2; Louis. & Nash, 13 1/2; U. S. Steel, 44 1/2; Manhattan, 14 1/2; U. S. Steel pf., 10 1/2; Metropolitan, 12 1/2; West. Union, 39 1/2; Missouri Pac., 10 1/2.

New York Markets.

FLOUR—Steady, but quiet. Minnesota patent, 14 1/2 to 15 1/2; winter straight, 13 1/2 to 14 1/2; winter extra, 12 1/2 to 13 1/2; winter patent, 14 1/2 to 15 1/2. WHEAT—A steadier tone and slight advance in the price of wheat resulted from small world shipments, cold weather west, light Russian exports and room covering May, 11 1/2 to 12 1/2; July, 9 1/2 to 10 1/2. RYBEE—Firm, creamery, common to extra, 15 1/2 to 16 1/2; state dairy, common to extra, 14 1/2 to 15 1/2. BUTTER—Strong, state, full cream, small and large, colored and white, September, fancy, 16c; October, best, 15 1/2 to 16c; late made, small, colored and white, average best, 15c; large, 14 1/2 to 15c; fair, 14 1/2 to 15c; same, full to light, 13 1/2 to 14c. EGGS—Firm, state, Pennsylvania and nearby, selected, white, 30c; choice, 30 1/2c; mixed, extra, 29 1/2c; western, 19 1/2 to 20c; selected, 20c; first, 19c; southern, 18 1/2c. TALLOW—Firm, city, 40 1/2 to 41c; country, 40c. HAY—Steady, shipping, 50 1/2 to 51c; good to choice, 50c. BEANS—Quiet, marrow 19 1/2 to 20c, medium, 18 1/2 to 19c; pea, 11 1/2 to 12c; red kidney, 12c. WOOL—Steady, domestic fleece, 30 1/2 to 31c; HOPS—Steady, state, common to choice, 18c; 19c; 18c; 19c; 18c; 19c; 18c; Pacific coast, 18c; 19c; 18c; 19c; 18c; 19c. LIVE POULTRY—Steady; fowls, 12 1/2 to 13c; ducks, 15 1/2 to 16c; old roosters, 9 1/2 to 10c; turkeys, 14 1/2 to 15c; spring chickens, 12 1/2 to 13c. DRESSED POULTRY—Steady; fresh killed fowls, choice, 12 1/2 to 13c; fair to good, 11 1/2 to 12c; turkeys, choice and fancy, 18 1/2 to 19c; do. fair to good, 16 1/2 to 17c; ducks, 11 1/2 to 12c; old roosters, 8 1/2 to 9c; nearby chickens, choice, 15 1/2 to 16c; western chickens, choice, 14 1/2 to 15c; western chickens, fair to good, 13 1/2 to 14c. Live Stock Markets. CATTLE—Supply light; market steady; choice, 8 1/2 to 9c; prime, 8 1/2 to 9c; veal, 8 1/2 to 9c.

BLACKSMITHING HORSESHOEING AND GENERAL REPAIRING.

Have had over thirty years' experience in practical horseshoeing and guarantee work to please. Your patronage solicited. The East Waverly Shop. W. E. MILLER.

LEHIGH AND SCRANTON COAL

At the Lowest Possible Prices. Orders can be left at West Sayre Drug Store, both phones; or at the Erie street yards at Sayre, Valley Phone 27m.

COLEMAN HASSLER, H. L. TOWNER, M. D.

Specialties. Diseases of Women and of the Rectum. Hours—7 to 9 a. m., 1 to 3, 7 to 8 p. m. OFFICE—SAMUELS BLOCK. Valley Telephone 27c. 128 Lockhart St.

A. H. MURRAY, M. D.

SPECIALTIES: Diseases of the Eye, Ear, Nose and Throat, and the Proper Fitting of Glasses. Hours—9-12; 1-4; 7-8; Sundays by appointment. Office, Wheelock Block.

A. E. BAKER, Carpenter and Builder.

17 Pleasant St. Waverly, N. Y. Advertise in The Record.

Wm. B. McDonald, D. D. S.

All modern methods for the scientific performance of painless operations on the mouth and teeth. 104 South Elmer Ave. OVER THE GLOBE STORE

LOOMIS OPERAHOUSE ORCHESTRA

Strictly Up-to-Date Music furnished for Balls, Parties and all manner of Social Functions, either public or private. Any number pieces desired will be furnished. Call Valley Record for terms, etc.

ATHENS.

Miss Laura Eighmey has returned from Elmira.

Ethan Jakeway spent Sunday with his family here.

Mrs. Mary Hall has returned from Cleveland, Ohio.

Mrs. Robert Nichol of Harris street is ill of pneumonia.

Miss Bertha Bradley is quite ill with a third attack of appendicitis.

Dr. Julius Dodd is removing to Philadelphia to succeed an old, retiring physician.

A son was born December 28 to Mr. and Mrs. Robert Wilkinson of Poughkeepsie.

Miss Alice Aickey has returned from a two weeks' visit in Trenton and Philadelphia.

Hugh E. Pierce, one of Ulster's active merchants, spent last night with relatives in town.

Dr. E. B. Joachim has been confined to his home by grip for several days but is able to be about again.

The machinery and derrick to be used in drilling the gas well are expected to arrive tonight from Wellsburg.

Jas. Bunyan and wife, who have been guests of Mr. and Mrs. Burdette Smith, returned to Towanda this morning.

John Melville and wife who have been visiting at the L. C. Horton home a short time, returned to Burlington today.

The union prayer service will be held at the Presbyterian church this evening. Rev. Allen will have charge of the meeting.

There was a meeting of the school board last evening. No business was transacted except the payment of presented bills.

Mrs. Anna Stevens and Mrs. Howard McIlvain of Reading came to Athens today to attend the funeral of their uncle, Mark Thompson.

WANT AN EXTENSION

Athens—Petitions are being circulated for the purpose of extending Pennsylvania avenue from its abrupt terminus at the furniture works in a zigzag southwesterly direction across the Kellogg, Harris and railroad lots to intersect Main street at the Lehigh Valley station. There is at present a driveway over private property but it is liable to be closed at any time. In that case approach to Wheelock avenue and to the furniture works would have to be made from the north or west. It is said that the property owners will consent to the opening of the road.

WANTED AT ELMIRA

Athens—Night Police O'Brien received a telephone message last evening to be on the lookout for a man who had stolen team of horses and a wagon near Elmira. The man is described as slim, and horse is black and the other roan.

The Envy of All Women. What woman or girl does not admire a beautiful, rose-tinted complexion. One cannot possess it if the blood is impure or weak. If the bowels are constipated, if the liver and kidneys are out of order. If you would try Dr. Rand's Celery Remedy, the great herb medicine, you would not only possess a beautiful complexion but also perfect health. Trial size free, large packages 25 and 50 cents. H. L. Gillespie and Child, Waltham & Young, Sayre.

Quickest Route to Chicago, 17 Hours from Sayre. Leave Sayre this afternoon and arrive at Chicago at 8 o'clock tomorrow morning. In time for connections for western points. This is via Lehigh Valley, Michigan Central or Lake Shore Railroads. Sleeper \$3.00 double berth from Buffalo. Best services and equipment—finest roadbed—unexcelled dining cars. Get a Free Sample To-day. Bauer's Instant Cough Cure and is convinced that it is the best. It is guaranteed to cure or your money refunded. C. W. Gliddings of Weak's Mills, Me., writes, "Your Bauer's Instant Cough Cure is a good seller and gives the best satisfaction of any cough medicine on the market. I have never had a bottle returned. If I sell one bottle they are sure to come after the second one and tell their friends of its merits. I will send another order soon." For sale by H. L. Gillespie and Child, Waltham & Young, Sayre.

Wednesday SPECIALS

KARNER'S

Groceries

The Charlotte brand of early June peas are small, even sized, sweet, tender, succulent, good values at 2 for 25c.

Wednesday, Very Special, 4 Cans for 31c

- 4 cans delicious corn .32
4 cans Van Camp's pumpkins .32
3 boxes shredded wheat .25
1 box Blanco Cero .19
1 box Saxon wheat food .19
1 box Zest and pretty dish 1 box Blanco Cero .19
1 box Banner Oats .25
1 box Cream of Wheat .19
1 box Blanco Cero .19
5 lbs best rolled oats .25
1 box Blanco Cero .25
10 bars Swift's Pride soap .29
10 bars Swift's wash'g powder .29
4 bottles best bluing .29
1 lb Karner's special Coffee .28
1 box Blanco Cero .28
3 lbs finest oyster crackers .28
1 box Blanco Cero .28
Niagara fancy bread flour .145
Spray Bread Flour .145
Cyclone Bread Flour .135
White Wings Bread Flour .130
Minnesota Bread Flour .125
Standard Pastry flour .125
The meanest prices on the best flour.
Supreme Pure Lard .10
Compound Lard, 6 for .50
6 lbs Cottosut .25
42 table Pickles .25
2 boxes Honey .25
10 lbs Morley's Buckwheat .25
3 cans Monogram syrup .25
10 bars Oakleaf soap .29
10 bars Acme soap .29
Roll Butter .23
10 lb pails fine butter .24
Cream cheese .16
Strictly fresh eggs .28
Finest storage eggs .24
4 qts beans .10
1 bu potatoes .100

Meat Department

- Sirloin steak .12 1/2
Porter House steak .12 1/2
Pork roasts, rind on .12 1/2
Pork chops, rind on .12 1/2
Pork Chunks, rind on .10
Pork Steak, rind on .12 1/2
Head Cheese "Our Own" .10
Liver Sausage "Our Own" .10
Scrapple, "Our Own" .10
Sausage "Our Own" .10
We pride ourselves with the products we offer you under "Our Own" brand. Nothing better found.
Link Sausage .10
3 lbs Hamburg steak .25
4 lbs pickled pigs feet .25
Frankfurters .10
Best chunk roasts .08
Good chuck roasts .07
Meaty neck cuts .06

Furniture Stores

Bedding, Dishes PRICED QUICK PAYMENTS SLOW QUALITY HIGH PRICES LOW

E. B. GARNER

Trustee. Quickest Route to Chicago, 17 Hours from Sayre. Leave Sayre this afternoon and arrive at Chicago at 8 o'clock tomorrow morning. In time for connections for western points. This is via Lehigh Valley, Michigan Central or Lake Shore Railroads. Sleeper \$3.00 double berth from Buffalo. Best services and equipment—finest roadbed—unexcelled dining cars. Get a Free Sample To-day. Bauer's Instant Cough Cure and is convinced that it is the best. It is guaranteed to cure or your money refunded. C. W. Gliddings of Weak's Mills, Me., writes, "Your Bauer's Instant Cough Cure is a good seller and gives the best satisfaction of any cough medicine on the market. I have never had a bottle returned. If I sell one bottle they are sure to come after the second one and tell their friends of its merits. I will send another order soon." For sale by H. L. Gillespie and Child, Waltham & Young, Sayre.

LAWYERS & WINLACK,

Attorneys and Counselors at Law. A GENERAL LAW BUSINESS TRANSACTED. LAWS' BUILDING, 219 DESMOND ST., Valley Phone 180-A. Sayre.

WILLIAMS & SUTTON SHOES Sayre, Pa., FURS

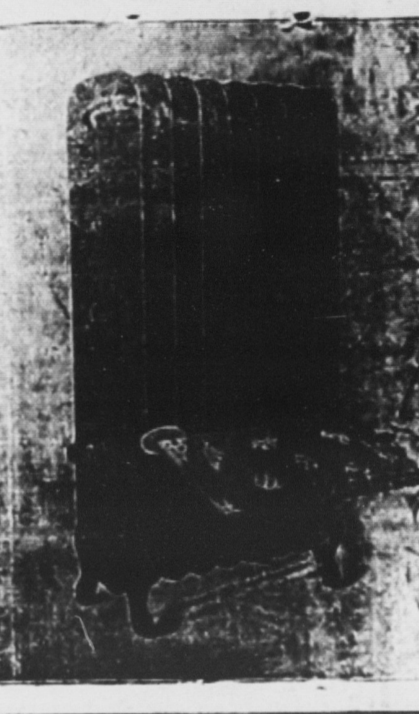
Take Notice

Today or Tomorrow we will leave a large circular at the door of every house in Waverly, Sayre and Athens announcing our semi-annual sale of

Shoes and Furs

Look for It, and Take Care of It. It Will Be Worth Money to You.

Walk-Over, A. E. Nettleton and all our lines of Shoes at the lowest prices ever offered in this section.



WARM YOUR FEET

Did you ever have any real comfort in trying to warm your feet at an ordinary radiator? Equip your radiators with our Foot Warmer which can also be used as a warming shelf on a dining room radiator, and then you'll know what the other fellow means because he didn't buy. For decorating radiators we sell the finest line of bronze on the market. All colors.

H. R. TALMADGE

Plumbing, Heating, Tinning, Both Phones. Elmer Ave.

The Valley Record, 25c a Month.

Bring Your Job Printing to Murrelle's Printing Office

"The Satisfactory Place." From four to eight skilled job printers and a new, up-to-date equipment are at your service. Our patrons say we have the disposition to please. We keep our promises. Talmadge Building, Elmer Ave., Sayre, Valley Phone 142a. WE PRINT

ELMER A. WILBER,

Wholesaler of WINES, LIQUORS BEERS AND ALES

109 Packer Avenue, SAYRE, PA. BOTH PHONES.

C. J. KITCHIN,

SAYRE'S LEADING DRAYMAN. Special care and prompt attention given to moving of Pianos, Household Goods, Safes, etc.

The Valley Record

If You Are Looking for An Up-to-Date Line of Neckwear, Gloves, Mufflers, Hosiery, Sweaters, Handkerchiefs, Fancy Suspenders, Sleeve Holders,

Don't Fail to Visit Murphy & Blish. Their Display is the Most Complete ever shown in the valley.

Murphy & Blish,

SAYRE, PA., Lockhart St., Next to Postoffice.