

The Daily Review.

Towanda, Pa., Friday, June 24, 1881.

EDITORS.
S. W. ALVORD. NOBLE N. ALVORD.
"Daily Review" only 25 cents per month. Try it.

Republican County Committee.

The Republican County Committee will meet at the Court House, in the Borough of Towanda, Pa., on Friday, June 24th, 1881, at one o'clock, P. M., for the purpose of organizing, selecting Vigilance Committees for the different election districts of the county and for the transaction of such other business as may come before the Committee.

E. J. ANGLE, Chairman.

COUNTY COMMITTEE OF 1881.

- Alba—O. F. Young.
- Albany—James Terry.
- Armenia—Benj. VanSickle.
- Ayclum—F. D. Kerrick.
- Athens Boro.
- 1st ward—Charles T. Hull.
- 2nd ward—Joseph M. Ely.
- Athens Twp.
- 1st Dist.—Frank Morley.
- 2nd Dist.—Dr. F. D. Keyes.
- 3rd Dist.—H. W. Thomas.
- Barclay—F. F. Lyon.
- Burlington Twp.—J. Travis.
- Burlington Boro.—M. S. Douglass.
- Burlington West—Jesse B. McKeap.
- Cantou Boro.—J. H. Shaw.
- Canton Twp.—C. C. Brown.
- Columbia—Hubert Ferguson.
- Franklin—A. C. Fairchild.
- Granville—H. H. Heald.
- Herrick—Geo. Brown.
- LeRaysville—O. G. Canfield.
- Leroy—H. K. Mott.
- Litchfield—H. S. Munn.
- Monroe Boro.—C. N. Walker.
- Monroe Twp.—Chas. Scott.
- New Albany—Dr. C. H. Plank.
- Orwell—G. G. Corbin.
- Overton—C. M. Williams.
- Pike—C. L. Squires.
- Ridgeberry—E. M. Taton.
- Rome Twp.—L. F. Russell.
- Rome Boro.—W. S. Kinney.
- Sheshequin—I. L. Young.
- Smithfield—N. W. Waldron.
- South Creek—William Dean.
- South Waverly—John M. Post.
- Springfield—Robert Allen.
- Standing Stone—Lawrence Gorden.
- Sylvania—Findly Furman.
- Terry—J. W. Gould.
- Towanda Twp.—B. T. Hale.
- Towanda North—D. O. Hollon.
- Towanda Boro.
- 1st Ward—J. McPherson.
- 2nd Ward—J. F. Sanderson.
- 3rd Ward—J. N. Califf.
- Troy Boro.—Albert Morgan.
- Troy Twp.—Milton Loomis.
- Tuscarora—John Clapper.
- Ulster—James Mather.
- Warren—C. T. Abel.
- Wells—C. L. Shepard.
- Windham—W. H. Clark Jr.
- Wilmot—Hiram Meeks.
- Wyalusing—E. S. Keeler.
- Wysox—Albert Lent.

SOCIETY DIRECTORY.

- MASONIC.**
- Union Lodge, No. 108, meets First and Third Wednesday of each month.
- Union Chapter, No. 161, meets Second Wednesday evenings of each month.
- Northern Commandery, Knights Templar, No. 16, Meets fourth Wednesday each month.
- KNIGHTS OF PYTHIAS.**
- Towanda Lodge, No. 290. Meets every Tuesday evening.
- Endowment Rank, Section 101. Meets Third Friday in each month.
- ODD FELLOWS.**
- Bradford Lodge, No. 167. Meets every Monday night.
- Bradford Encampment, No. 41. Meets Second and Fourth Wednesday night of each month.
- Leoh Lodge Degree of Rebekah. Meets First and Third Friday evenings of each month.
- KNIGHTS OF HONOR.**
- Crystal Lodge. Meets every Monday evening.
- Mystic Lodge, K. and L. of H. Meets Second and Fourth Friday evenings of each month.
- G. A. R.**
- Watkins Post No. 68. Meets every Saturday evening.
- KNIGHTS OF THE GOLDEN RULE.**
- Towanda Castle No. 58. Meets at K. of P. Hall every Wednesday evening.
- ROYAL ARCANUM.**
- Towanda Council, No. 532, meets first and third Friday of each month in K. P. Hall.

NEW

Job Printing!

OFFICE.
All work
Neatly executed on the shortest notice.
LETTER, NOTE AND BILL HEADS, ENVELOPES, TAGS AND PAMPHLET WORK A SPECIALTY
Corner Main and Pine streets, over the Music Store.
TOWANDA, PENN'A.
ALVORD & SON.
Publishers of
THE DAILY REVIEW.

TRAVELLER'S GUIDE.

PA. AND N. Y. R. R.
Trains on the Pa. & N. Y. R. R. pass this place as follows:

Moving South.
No. 3, at 5:05 a. m., for New York and way sta.
No. 7, at 10:43 a. m., mail train for New York, Philadelphia and intermediate points.
No. 9, at 3:00 p. m.—Express for Philadelphia.
No. 15, at 10:46 p. m.—Fast express for Philadelphia and New York.
No. 31.—Local Passenger Train, between Elmira and Wyalusing, 7:23 p. m.

Moving North.
No. 8, at 4:00 a. m.—Fast express from New York and Philadelphia
No. 30, at 9:30 a. m., WilkesBarre accommodation.
No. 2, at 4:43 p. m.—Mail train from Philadelphia and New York.
No. 12, at 12:45 a. m., from New York.
No. 32, at 6:53 a. m.—Wyalusing and Elmira local.

STATE LINE AND SULLIVAN R. R.
Leave.
3:00 o'clock p. m. for Bernice and intermediate sta.

Arrive.
9:00 a. m., from Bernice.

BARCLAY R. R.
Leave.
7:30 a. m., for Barclay and all stations, and 3:00 p. m.

Arrive.
10:15 a. m., from Barclay and intermediate stations, and 6:20 p. m.

CANTON STAGE.
Leaves at 9 o'clock, a. m. Arrives at 5 o'clock p. m.

TROY STAGE.
Leaves at 10:30 a. m. Arrives at 1 p. m.

SHESHEQUIN STAGE.
Arrives at 11 o'clock a. m. Departs at 12 m.

LERAYSVILLE STAGE.
Arrives at 12 m. Leaves at 2 p. m.

TERRYTOWN STAGE.
Arrives Monday, Wednesday and Friday, at 12 m. Departs same days at 1 p. m.

NEW ERA STAGE.
Arrives Tuesday, Thursday and Saturday, at 12 m. Departs same days at 1 p. m.

CHURCH DIRECTORY.

PRESBYTERIAN—Rev. J. S. Stewart, D.D., Pastor. Preaching at 10:30 a. m. and 7 p. m. every Sunday. Prayer meeting Thursday evening at 7:30. Sunday School—D. A. Overton, Superintendent—at 12 o'clock.

CHRIST CHURCH—(Episcopal)—Rev. John S. Beers, Rector. Service and preaching at 10:30 a. m. and 6:00 p. m. Service and lecture Thursday evening at 7:30. Sunday School—Jas. T. Hale, Assistant Supt.—at 12 m. Teachers' meeting Tuesday evening at 7:45.

M. E. CHURCH—Rev. C. H. Wright, Pastor. Preaching at 10:30 a. m. and 7 p. m. Prayer Meetings on Sunday evening at 6:30, Thursday evening at 7:30. Young men's prayer meeting Friday evening at 8. Sunday School—B. M. Peck, Superintendent—at 12 m.

SS. PETER AND PAUL—(R. C.) Rev. Chas. F. Kelley, Priest. Mass at 8 and 10:30 a. m. Vespers at 7:30 p. m. Sunday School at 12:30 and 2:30.

CHURCH OF THE MESSIAH—(Universalist) Rev. William Taylor, Pastor. Preaching at 10:30 a. m. and 7 p. m. Prayer and Conference Meeting Thursday evening at 7:30. Sunday School—Dr. Taylor, Superintendent—at 12 m.

BAPTIST CHURCH—Rev. C. T. Hollowell, Pastor. Preaching at 10:30 a. m. and 7 p. m. Prayer Meeting, Thursday Evening, 7 P. M. Sunday School at 12 m.

BRETHREN—Services at 10:30 a. m. every Lord's day. Reading meeting every Wednesday evening. Sunday-school at 5 p. m.

"PRO BONO PUBLICO."

"JAKE"
The Clothier

(Established 1865)
Offers better bargains in Men's, Youths', and Boys' CLOTHING,
Hats, Caps, Ties, Scarfs,
Collars, Cuffs, &c., than ever, and proposes to sell lower than any house in Bradford county. A large stock of
CHILDREN'S SUITS AT COST,

as we wish to close out that line of goods entirely in the next sixty days. Fresh spring goods every day. For "proof of the pudding," all on "JAKE" at No. 2 Patton Block, Towanda.

PLUMBING AND GAS-FITTING!

Ed. Williams
PRACTICAL

Plumber and Gas-Fitter,

Respectfully informs the people of Towanda that he is prepared to do all work in his line on the shortest notice, and guarantee satisfaction.

He keeps a LARGE ASSORTMENT of stock, and will furnish pipe, all plumbing materials and gas fixtures at a small advance from jobber's prices. I refer to my numerous customers during the ten years I have been in Towanda as to the character of my work, and solicit the patronage of those having jobs in my line.

Estimates furnished when desired.
E. WILLIAMS.
Shop a few doors north of Mercur Block
May 6, 1881.

TAKE THE



THE GREAT

BURLINGTON ROUTE.

No other line runs Three Through Passenger Trains Daily between Chicago, Des Moines, Council Bluffs, Omaha, Lincoln, St. Joseph, Atchison, Topeka and Kansas City. Direct connections for all points in Kansas, Nebraska, Colorado, Wyoming, Montana, Nevada, New Mexico, Arizona, Idaho, Oregon and California.

The Shortest, Speediest and Most Comfortable Route via Hannibal to Fort Scott, Denison, Dallas, Houston, Austin, San Antonio, Galveston and all points in Texas.

The unequalled inducements offered by this Line to Travelers and Tourists, are as follows: The celebrated Pullman (16-wheel) Palace Sleeping Cars, run only on this Line, C., B. & Q. Palace Drawing-Room Cars, with Horton's Reclining Chairs. No extra charge for Seats in Reclining Chairs. The famous C., B. & Q. Palace Dining Cars. Gorgeous Smoking Cars fitted with Elegant High-Backed Rattan Revolving Chairs for the exclusive use of first-class passengers.

Steel Track and Superior Equipment, combined with their Great Through Car Arrangement, makes this, above all others, the favorite Route to the South, South-West, and the Far West.

Try it, and you will find traveling a luxury instead of a discomfort. Through Tickets via this Celebrated Line for sale at all offices in the United States and Canada.

All information about Rates of Fare, Sleeping Car Accommodations, Time Tables, &c., will be cheerfully given by applying to
J. Q. A. BEAN, Gen'l Eastern Agent,
306 Washington St., Boston, Mass.
and 317 Broadway, New York.

JAMES R. WOOD, Gen. Pass. Agt., Chicago.
T. J. POTTER, Gen. Manager, Chicago.

PASSENGERS

GOING WEST

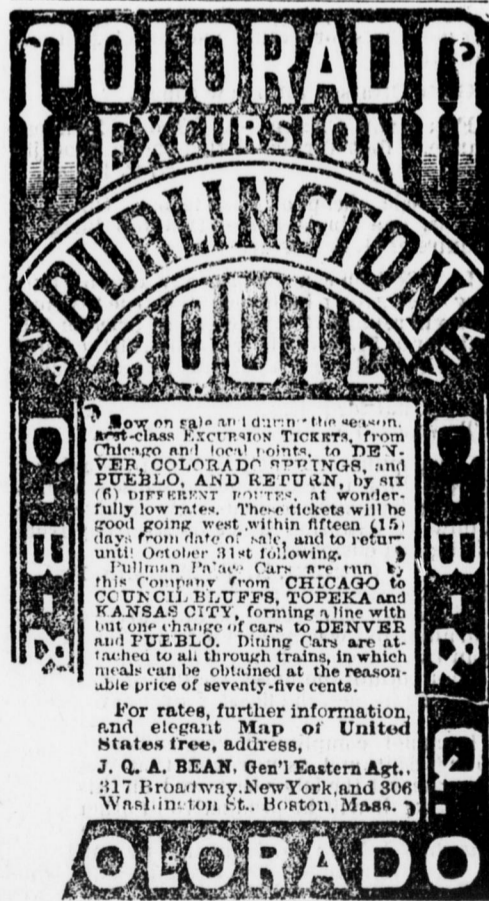
Should remember that the regular Ticket Office at the upper depot, Towanda, is the place to purchase TICKETS TO ALL POINTS

WEST, NORTHWEST and SOUTHWEST, at the

Lowest Possible Rates

by any route. For information as to routes, time changes, connections, &c., to any place in the United States or Canada, call on or address

H. E. BABCOCK,
Ticket Agent, Towanda, Pa.



Now on sale and during the season, first-class EXCURSION TICKETS, from Chicago and local points, to DENVER, COLORADO SPRINGS, and FUEBLO, AND RETURN, by SIX (6) DIFFERENT ROUTES, at wonderfully low rates. These tickets will be good going west within fifteen (15) days from date of sale, and to return until October 31st following. Pullman Palace Cars are run by this Company from CHICAGO to COUNCIL BLUFFS, TOPEKA and KANSAS CITY, forming a line with but one change of cars, to DENVER and FUEBLO. Dining Cars are attached to all through trains, in which meals can be obtained at the reasonable price of seventy-five cents.

For rates, further information, and elegant Map of United States free, address,
J. Q. A. BEAN, Gen'l Eastern Agt.,
317 Broadway, New York, and 306 Washington St., Boston, Mass.

COLORADO

THE DAILY REVIEW

ONLY TWENTY-FIVE CENTS A MONTH.

MRS. D. V. STEDGE,
Manufacturer of and dealer in
Human Hair Goods,

Special attention given to
COMBINGS—Roots all turned one way.

Switches from \$1 upwards. Also agent for Hunter's INVISIBLE FACE POWDER, Madam Clark's Corsets, and Shoulder Brace Elastics. Particular attention paid to dressing ladies hair at their homes or at my place of business, over Evans & Hildreth's store. MRS. D. V. STEDGE.

NEW EATING HOUSE
AND RESTAURANT.

S. B. TIDD has fitted up one of the stores in Streeter's new block (one door south of Evans & Hildreth's) and is now prepared to furnish

WARM MEALS ON SHORT NOTICE.

HIS LUNCH COUNTER
is supplied with all the delicacies of the market. He has elegantly furnished rooms for the accommodation of parties.

GIVE HIM A CALL!

H. W. MILLER

keeps several
[PUBLIC HACKS]

and is ready to attend all calls in his line promptly. He runs to ALL TRAINS. Charges for night and early morning trains 25 cents per passenger. Regular customers supplied with tickets at reduced rates. Charges for attending funerals from \$2.50 to \$3.00. Horses and carriages to let.

Orders left at his office below council rooms will receive careful attention. H. W. MILLER.
Nov. 27, 1880.

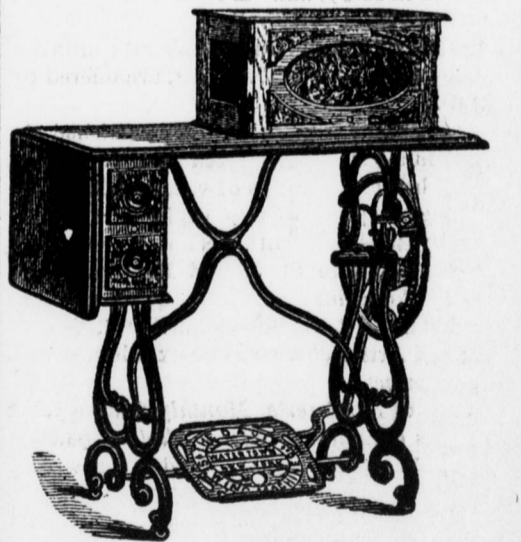
STEDGE'S TONIC FOR THE HAIR.

A sure cure for Dandruff and all other diseases of the Scalp. Stops the hair from falling out; invigorates the hair nerves; cleanses the hair perfectly and gives it a beautiful and healthy gloss that cannot be obtained without its use.

Price 50 cents per Bottle.
Manufactured and sold by
D. V. STEDGE,
TOWANDA, PA.



DAVIS VERTICAL FEED



Simplest, Strongest and does work that cannot be done on any under feed machine.

O. A. BLACK, Agent,
Towanda, Pa.
Send for Samples.