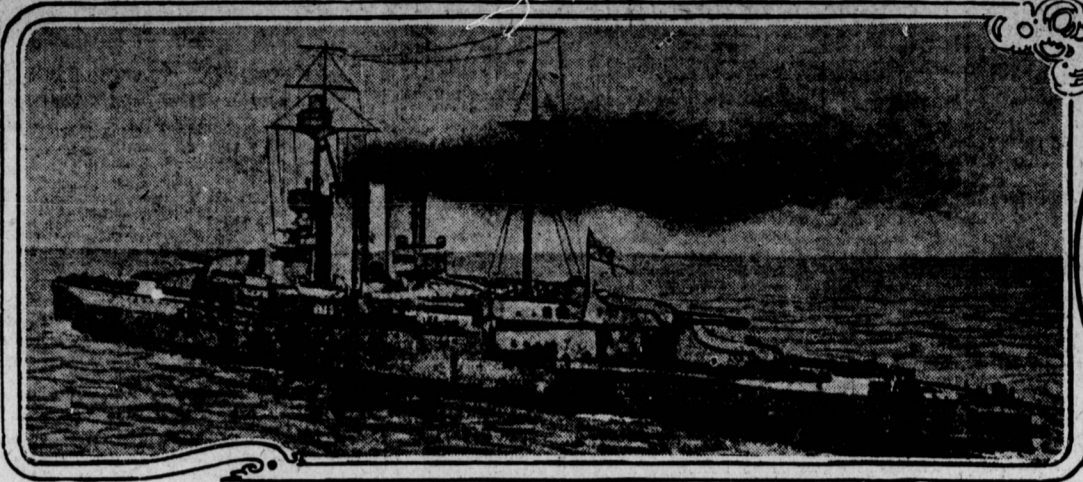


TURKS CONFUSE FRANCO-BRITISH GUNNERS BY CONSTANT SHIFTING OF LAND BATTERIES

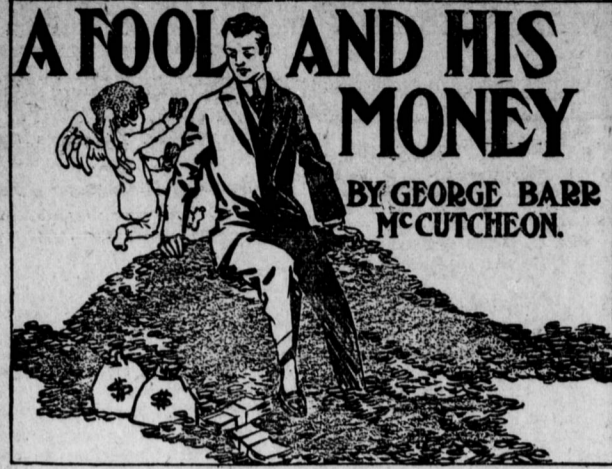


THE QUEEN ELIZABETH

The Queen Elizabeth, the largest ship in the British navy, is at present leading the Allies' fleet in trying to force the Dardanelles. The Franco-British gunners have been confused all along by the constant shifting of the Turkish land batteries. This is given as one of the principal reasons why they are having such a hard time forcing the straits. Rear Admiral John Michael de Robeck is the present commander of the allied fleet.



REAR ADMIRAL JOHN MICHAEL DE ROBECK



A FOOL AND HIS MONEY

BY GEORGE BARR MCCUTCHEON.

Copyright, 1915, by George Barr McCutcheon.

CONTINUED
Our second and more critical survey of the lower floors of the castle revealed rather urgent necessity for extensive repairs and refurbishing, but I was not dismayed. With a bit of the disregard for expenses I dispatched Rudolph, the elder of the two sons, to Linz with instructions to procure artisans who could be depended upon to undo the ravages of time to a certain extent and who might even suggest a remedy for leaks.

paid them off last night, you see. It may interest you to hear that their wages for three days amounted to nearly \$700 in our money, to say nothing of materials and breakage.
"Breakage?" I exclaimed in surprise.
"Yes, sir, breakage. They break nearly as much as they mend. We'll—we'll go bankrupt, sir, if we're not careful!"
I liked his pronoun. "Never mind," I said; "we'll soon be rid of them."

to me. You say you can't find the keys to that side of the castle. Will you explain how it is that it is open to strange woman and—s—d dogs?
"You must be mistaken, mein herr," he whined abjectly. "She cannot be there. She— Ah, I have it! It may have been my wife, Gretel! Have you been in the east?"
"Nonsense!" I cried sharply. "This won't do, Mr. Schmick. Give me that bunch of keys. We'll investigate."

Two Abreast We Fled Through the Long, Vaulted Halls.
hand. "And, Schmick, if that dog bites I'll hold you personally responsible. Do you understand?"
Two abreast we fled through the long, vaulted halls, Rudolph carrying a gigantic lantern and Max a sledge. We traversed extensive corridors, mounted tortuous stairs and came at length to the sturdy oak door that separated the east wing from the west—a huge, formidable thing strengthened by many crosspieces and studded with rusty bolt heads.

Cumberland Valley Railroad
In Effect May 24, 1914.
Trains Leave Harrisburg—
For Winchester and Martinsburg, at 5.03, 7.50 a. m., 3.40 p. m.
For Hagerstown, Chambersburg and intermediate stations, at 5.53, 7.50, 11.53 a. m., 3.40, 5.32, 7.40, 11.09 p. m.
Additional trains for Carlisle and Mechanicsburg at 9.48 a. m., 2.18, 3.27, 6.30, 9.20 p. m.
For Dillsburg at 5.03, 7.50 and 11.53 a. m., 2.18, 3.40, 5.32, 6.30 p. m.
Daily. All other trains daily except Sunday.
J. E. JOHNSON, Supt.
H. A. RIDDLE, G. P. A.

PLANT PROSPEROUS UNDER MR. J. GILMORE FLETCHER

Brother of Former Sheriff of This County Is President of Pittsburgh Steel Concern That Is Sharing Largely in the Return of "Good Times"

(Special to the Star-Independent.)
Pittsburgh, April 20.—The Pittsburgh "Dispatch" of April 14 prints the following article showing the facts of a prosperity wave that has come to the Riter-Conley Manufacturing Company, of Pittsburgh, of which the president is J. Gilmore Fletcher, formerly of Chambersburg, a brother of former Sheriff J. Rowe Fletcher, of Dauphin county.

HOTEL IROQUOIS

South Carolina Avenue & Beach Atlantic City, N. J.
Pleasantly situated, a few steps from Boardwalk. Ideal family hotel. Every modern appointment. Many rooms equipped with running water; 100 private baths. The Riter-Conley most excellent. Rates \$10.00, \$12.00, \$15.00 weekly. American plan. Booklet and calendar sent free on request.
David P. Rahter, Chief Clerk
Silas Wright, Manager
Calendars of above hotel can also be obtained by applying at Star-Independent office.

Directory of Leading Hotels of Harrisburg

HOTEL VICTOR
No. 25 South Fourth Street
Directly opposite Union Station, equipped with all modern improvements, running water in every room; bath, perfectly sanitary; nicely furnished throughout. Rates moderate.
European Plan.
JOSEPH GIUSTI, Proprietor.

THE PLAZA

423-425 Market St., Harrisburg, Pa. At the Entrance to the P. E. R. Station
EUROPEAN PLAN
F. B. ALDINGER, Proprietor

Broken Egg Stove Nut

sizes of coal are now 50c a ton cheaper. Why not get in touch with Kelley and have your bins filled for next Winter?

H. M. KELLEY & CO.
1 N. Third Street
Tenth and State Streets

from the office building, power and galvanizing houses, consists of six large shops, all under one roof, that covers an area of 360,000 square feet, and is said to be the largest and most completely equipped shop in the world for miscellaneous plate and structural work.

Comforts for Employees
In laying out the plant the company was not unmindful of the comfort and convenience of its employees. The grounds are especially attractive and there are two tennis courts, a baseball diamond, quiet grounds and a putting green for the use of all employees, while a large truck garden is cultivated to supply vegetables for the noon meals of employees.

"One reason for the increased output of our company," said this man, "is orders for 55,000-barrel oil-storage tanks. These tanks are 114 feet 7 inches in diameter and 30 feet 4 inches high and weigh approximately 150 tons each. Two of these tanks are fabricated each workday and, during the last three months, 145 of them were contracted for, to be delivered and erected in the Oklahoma oil fields, 20 for the Texas oil fields and 10 for the Tampico district in Mexico."

"A recent bridge order we received from the Indianapolis Union Railway covers the furnishing of approximately 8,100 tons of metal work for the downtown track elevation in Indianapolis. This is one of the most important improvements authorized by the Pennsylvania Railroad since its re-trenchment policy adopted about two years ago."

"Refinery and tankage work recently booked for the Texas company includes 6,500 tons of plate work to be erected at their various refinery plants. Orders for galvanized transmission towers for power and light companies call for delivery of approximately 75 miles of towers to be erected in Eastern Pennsylvania, North and South Carolina and along the Ohio River from Pittsburgh to Beaver, Pa."

Big Gas Contracts
"The 4,000,000 cubic foot holder under contract for the Cambridge Gas Light Company, of Cambridge, Mass., and retort houses now under contract for the Worcester Gas Light Company, Rockford Gas Light Company, and the Philadelphia Suburban Gas and Light Company are well under way and will be completed this summer."

"A contract is practically completed with the United States Reclamation Service for furnishing material for the rolling dam of the Grand River Division Dam of the Grand Valley project in Colorado, consisting of six 70 and one 60-foot by 15-inch rollers with accessories, involving approximately 200 tons of structural and plate work. This type of dam, the first built in the United States, is patented by Maschinenfabrik Augsburg-Wurzburg, A. G., Gustavshagen, Germany, and the Reclamation Service caused its manufacture in this county under a license from that company."

"More near-local business covers structural steel required for an extension to the shops of the Hookensmith Wheel and Mine Car Company at Penn Station, Pa., and the American Vanadium Company at Bridgeville, Pa. Shipments will start shortly on the steelwork required for a six-story storage building, 121 feet long by 115 feet wide, for the H. J. Heinz Company. This contract involves approximately 1,400 tons, and the building will be similar to the present seven-story building which the Riter-Conley Company furnished."

Work is going on rapidly on an order for dredge pipe for the St. Lawrence River Power Company at Massena Springs, N. Y. The order calls for one mile of pipe, 24 inches in diameter."

Makes 61 Feel Like 16
"I suffered with kidney ailment for two years," writes Mrs. M. A. Bridges, Robinson, Mass., "and commenced taking Foley Kidney Pills about ten months ago. I am now able to do all my work without fatigue. I am now 61 years of age and feel like a 15-year-old girl." Foley Kidney Pills strengthen and invigorate weak, tired and deranged kidneys; relieve backache, weak back, rheumatism and bladder trouble. They are tonic in action. Geo. A. Gargas, 16 North Third Street.—Adv.

Veteran Dies on Visit
York, Pa., April 20.—While visiting in the city, as had been his annual custom for five years, George H. Drysdale, of the Mountain Branch of the National Home for Disabled Volunteer Soldiers, Johnson City, Tenn., died of apoplexy last night. His body was found in a local hotel.

Lancaster Tabernacle Sold
Lancaster, April 20.—Dr. Henry W. Stough, evangelist, will close his seven weeks' campaign here next Sunday. The tabernacle was sold yesterday at auction. The building cost \$4,500 and was sold for \$1,725.

STOMACH SOUR? STOP INDIGESTION, GAS, HEARTBURN—PAPPE'S DIAPEPSIN

Don't Suffer! Regulate Your Upset Stomach in Five Minutes

Do some foods you eat hit back—taste good, but work badly; ferment into stubborn lumps and cause a sick, sour, gassy stomach? Now, Mr. and Mrs. Dyspeptic, get this down: Pape's Diapepsin digests everything, leaving nothing to sour and upset you. No difference how badly your stomach is disordered, you get happy relief in five

minutes, but what pleases you most is that it strengthens and regulates your stomach so you can eat your favorite foods without fear. Most remedies give you relief sometimes—they're slow, but not sure. Diapepsin is quick, positive and puts your stomach in a healthy condition so the misery won't come back. You feel different as soon as Pape's Diapepsin comes in contact with the stomach—distress just vanishes—your stomach gets sweet, no gases, no belching, no eructations of undigested food, your head clears and you feel fine. Put an end to stomach trouble by getting a large fifty-cent case of Pape's Diapepsin from any drug store. You realize in five minutes how needless it is to suffer from indigestion, dyspepsia or any stomach disorder.—Adv.



HOUSEHOLD TALKS

Henrietta D. Grauel

A Most Important Food—Jam

It may seem early in the season to talk about making jams. We usually wait until strawberries and raspberries are low priced and plentiful, and they are far from that now. But so much is being said about the demand abroad for this food that everyone is considering it.

We are given to thinking it a sweet and more or less of a luxury but often it is a necessity. Such cases are when food is not plentiful, when it is lacking in variety or playing pranks on digestions.

In army camps all these conditions prevail and Professor James Long explains in detail that "jam contains three and one-half times as much energy as butter. That minerals are present in the skins of the fruit, that the fine seeds and fibres are a natural, or mechanical, laxative. It is toothsome and gives plainest fare a relish and creates a mental effect that helps to maintain health." Dr. Long adds that all sugars are not alike and that the sweetness of jam is like a sugar of fruit and has a wonderful action on nutrition. Commercial sugar, eaten freely, would cause irritation, acidity and other freaks in the way of trouble in the digestion but there is none of this where fruit sugar is used.

Our favorite jams are made from gooseberries, plums, currants and blackberries, but we make peach and apple butter, pear conserve and various marmalades and all these the British dub "Jam."

Just now we should have orange

marmalade for this fruit is plentiful and low priced. Use only pulp from two grape fruit, six oranges, and four lemons. Slice them thin and cut in small pieces. Place in a porcelain pan over night with three quarts of water covering fruit, to which has been added three pounds of sugar.

In the morning boil until it is jelly-like.

QUESTIONS AND ANSWERS
"Should wash material be shrunk before it is made up and how is it done so it will still look like new goods?"

Reply.—Materials should always be shrunk before use. Sprinkle goods with water, using a whisk brush to get it on lightly and evenly. Place on a clean sheet and roll it up as tightly as you can and let it stand for twenty-four hours. Iron on the wrong side.

"I have several cans of corn left from last season and would like to use it before corn comes, but my family is tired of it. Can it be made into a relish or a salad?"

Reply.—Corn salad is made from either fresh or canned corn and is excellent with meats and fish. To each can of corn add one stalk of chopped celery, one-half of a head of cabbage chopped, two quarts of vinegar, and several sweet peppers. Season with four cups of sugar, four tablespoons of salt and the spices you like. Boil this twenty minutes, taste and add more sugar or more spices as needed. Seal in cans.

DOEHNE BEER
Unrivaled for Purity and Flavor
A builder of strength and flesh
A Tonic for businessmen and overworked persons
Produced by the Master Brewer
DOEHNE BREWERY
Bell 826 L Order It Independent 318

EVERY HOME
Has Its Real Value
The Classified Columns of the Star-Independent will get you results if you want to buy or sell one.
The wants of many business people and home demands are realized by its use. Let us act for and with you—now. Call at our office or
Bell Phone 3280 Independent 245 or 246