

CALL 1991-ANY PHONE. **Bowman's**
FOUNDED 1871
HARRISBURG'S POPULAR DEPARTMENT STORE

Visit the Demonstration of Elmo
Toilet Preparations—just inside the
main entrance.

Save greatly on a fine set of furs,
fur coats, and separate pieces. It's
a Sale.

CALL 1991-ANY PHONE. **Bowman's**
FOUNDED 1871
HARRISBURG'S POPULAR DEPARTMENT STORE

THE GREAT JANUARY CLEARING SALE

Starts To-morrow: An Event Prior to Inventory When Winter Apparel, and All Odd Lots are Dismissed, So That Stocks May be "Clean as a Whistle" for Early Spring Merchandise.



A Sale Like This Sale of Women's Shoes Never Happened Before

Nor is it likely to happen again—soon. Doesn't it appear massive when 3,273 women can secure a pair of good quality shoes, at the very little price of

\$1.49 Pair

Of course, to-morrow being the second day of this great sale, there are considerably less than the above amount, but then, over three thousand pairs of shoes do not move in one day, so all the assortments are still complete.

This Sale—Why?

It represents the entire stock of women's shoes from a retailer who operates a chain of 127 stores, one being in Harrisburg, and is NOT a clearance lot. Having decided to discontinue selling women's shoes, the entire stock was offered at an extraordinary concession in price. Some of the shoes had been purchased for spring selling and were never out of the case, while not one pair has been made over a year ago. This speaks for the styles.

You Will Remember

That these shoes sell at all times at an established price, so we only give you the very special sale price—1.49, in order to avoid identity, as requested.

Women's and Children's Gloves Figure In This Clearing

- Fownes' Kid Gloves, \$1.25 pr.—regularly \$1.50—one-clasp, in white and tan; P. K. finger.
- Bacmo Gloves, \$1.00 pr.—regularly \$1.50—real mocha skin, in tan and black.
- Mousquetaire Gloves, \$2.50 pr.—value \$3.00—12-button, in tan only; fleece lined.
- Mocha Gloves, \$1.98 pr.—regularly \$2.50; in tan and grey; wool lined.
- Overseam Kid Gloves, 75¢ pr.—regularly \$1.00—two-clasp, in black, white, tan and grey.
- Children's Gauntlets at 29¢—regularly 50¢; fleece lined.
- Children's Gloves, 75¢ pr.—regularly \$1.00; in tan and grey; fleece lined.

Main Floor—BOWMAN'S.

A Sturdy Clearing In the Art Dept.

- Linen Centers, 50¢—regularly 75¢; Madeira hand embroidered centers, 18-inch.
- Linen Doilies, 20¢—regularly 35¢; Madeira hand embroidered—10 inch size.
- Linen Lunch Cloths, \$1.98—regularly \$3.50—54 inches square, hand embroidered corner, scalloped edge.
- Hand Embroidered Pieces at 75¢—regularly \$2.00 to \$5.00; lot consists of collars, boudoir caps, aprons, pillow tops, collar and cuff sets; tie racks.

Second Floor—BOWMAN'S.

A Little Clearing of 'Kerchiefs

- Linen Handkerchiefs, 10¢—regularly 25¢—embroidered edge and corner.
- Linen Finish Handkerchiefs, 5¢—initial and plain.
- All Linen Handkerchiefs, 12½¢—narrow hem; exceptional value.

Main Floor—BOWMAN'S.

Clearing Sale Items In the Children's Dept.

- Children's Sweaters at 49¢—formerly \$1.25—soft wool yarns, in brown, Copenhagen and white; sizes 1 to 4 years.
- Children's Hats and Bonnets, at 49¢—formerly \$1.25 to \$2.00—velvet and plush; trimmed with ribbon, fur and flowers.
- Children's Dresses at 65¢—formerly \$1.25 to \$1.50—gingham and galatea; stripes, checks and plaids; low belted and double skirt models; trimmed in wash braids and plain contrasting colors; sizes 4 to 14 years.

Second Floor—BOWMAN'S.

Clearing of Broken-Size Corset Lots

Broken size corsets, but all sizes in the lot; back and front laced; La Camille, Warner, C. B., Henderson and Royal Worcester, \$3.00 to \$6.00 values. Priced at \$1.98.

Second Floor—BOWMAN'S.

Strong Reductions On Dress Fabrics During The Clearing Sale

- All Wool and Silk and Wool Brocades, 39¢ yd.—formerly \$1.50—in navy, Copenhagen, brown and tan.
- Wool Suiting, 39¢ yd.—formerly \$2.00—56 inches wide; tango shades.
- Black Wool Dress Goods, 39¢ yd.—formerly \$1.00; 44 inches wide.
- Satin Messalines, 59¢ yd.—formerly \$1.00—colored; 36 inches wide.
- Silk Samples, 10¢ piece.
- Cotton Crepes, 12½¢ yd.—formerly 25¢ and 39¢; sheer quality; all shades.
- Striped Mercerized Suitings, 10¢ yd.—formerly 39¢; yard wide.
- Crepe Plisse, 9½¢ yd.—formerly 15¢; set figures and floral designs.
- Figured Lawns, 10¢ yd.—formerly 25¢; 40 inches wide.

Main Floor—BOWMAN'S.

Dismissing a Large Number of Trimmings At Unusual Prices

- 5¢ Torchon Laces and Insertions, 3¢ yard.
- 10¢ colored Embroidery Edges, in pink, light blue, red, navy and black, 5¢ yard.
- 25¢ Marabou, in pink, light blue, white and natural, 18¢ yard.
- 5¢ and 10¢ Val. Insertions, 2¢ yard.
- 39¢ Embroidered Wool Flannel, 29¢ yard.
- 15¢ and 20¢ Point de Paris Laces, 9¢ yard.
- \$2.00 Ostrich Ruffs, \$1.25.
- \$1.50 Maline Ruffs, \$1.00.
- \$1.00 Maline Ruffs, 75¢.

Main Floor—BOWMAN'S.

Notions Reduced

- 12½¢, 20¢, 25¢ and 39¢ Buttons, 5¢ doz.
- 50¢ and 75¢ Buttons, 10¢ doz.
- 5¢ card colored Pearl Buttons, 24 and 36 line, 2¢.
- 3¢ white cotton Tape, 1¢.
- 50¢ silk and washable Emblem Sets, 19¢.
- 25¢ silk Emblem Sets, 10¢.
- 10¢, 12½¢ and 25¢ washable Braids, 1¢ yard.
- 10¢ card salt water Pearl Buttons, 5¢.
- 10¢ 6-yd. piece white Beading, 7¢.
- 8¢ and 10¢ silk Inside Belting, 1¢ yard.
- 5¢ brass Hooks and Eyes, 2 cards 5¢.
- 25¢ and 50¢ fancy Hair Ornaments, 10¢.
- 10¢ Dressing Comb, 3¢.
- 12½¢ and 20¢ velvet grip Hose Supporters, slightly aged elastic, 5¢.
- 5¢ pack lightning Sewing Needles, 2 packs 5¢.
- 5¢ Dress Snaps, 2 dozen, 5¢.

Main Floor—BOWMAN'S.

Blankets Are Very Specially Priced In This Sale

- Wool Nap Blankets, \$1.75 pr.—regularly \$2.50; grey and tan, with pink and blue borders; slightly soiled from handling.
- Single Bed Blankets at 29¢ each.
- Baby Blankets at 29¢—regularly 39¢; in pink, blue, grey and tan.
- Baby Blankets at 10¢—regularly 29¢; pink and blue borders.

Main Floor—BOWMAN'S.

Clearing Out Remnants of White Goods

- In lengths from 1 to 15 yards; in voiles, piques, lawns, batiste, madras, nainsook and longcloth; values up to 19¢ yard. Price is 6¼¢ yard.
- Linen Finish Suiting, 37½¢ yd.—90 inches wide.

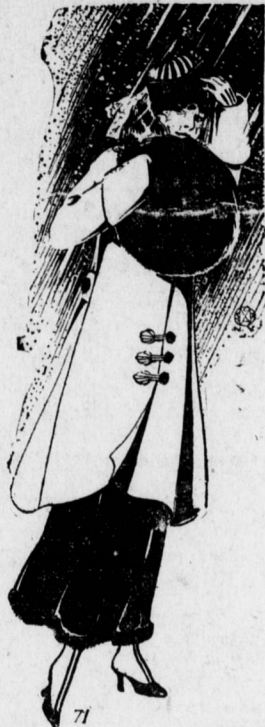
Main Floor—BOWMAN'S.

Fine Steamer Rugs Reduced

- One each of lavender and reversible grey, finished with 2-inch binding; regularly \$12.50. Priced at \$8.98.
- One each of plaid, reversible and plain; regularly \$10.00. Priced at \$7.50.

Main Floor—BOWMAN'S.

The Clearing Sale In the Women's Coat & Suit Dept. Means Considerable Savings



Clearing of Waists: \$1.98

Formerly \$5.00 and \$6.00—many of them are samples, others will answer for spring wearing. Heavy messalines in staple models; soft taffetas in plain effects. Fancy charmeuse and lace models. Chiffons and net waists.

Corduroy Coats at \$9.98

They're just about half price but not an actual clearance—because we will buy hundreds of these coats this season yet. And not to be classed as Clearance garments because they are the top notch of style—and because they are being sought more than any other kind of coats. The corduroys are in green, grey and brown. The plushes are in black only. More than a dozen styles to pick from.

Second Floor—BOWMAN'S.

Good Quality Linens and Towels Are Reduced

- Mercerized Table Cloths, 78¢—regularly \$1.50; square cloths but round patterns; hemmed ready for use; size 72x72 inches.
- Turkish Towels, 3 for 25¢—regularly 15¢ and 19¢—unbleached; rough finish, right from the mills.
- Bath Mats, 35¢—regularly 50¢.

Main Floor—BOWMAN'S.

Women's and Children's Hosiery Reduced

- Infants' Hose, 9¢ pr., 3 pairs, 25¢—regularly 12½¢; cotton, fine ribbed; black and colors.
- Women's Hose, 9¢ pr., 3 pairs, 25¢—regularly 12½¢; black cotton, cashmere finish.
- Women's Hose, 15¢ pr.—regularly 25¢; silk lisle and medium weight cotton; black and tan.
- Boys' Hose, 9¢ pr., 3 pairs, 25¢—regularly 12½¢; cotton, medium weight; black, sizes 6 to 7½.

Main Floor—BOWMAN'S.

Save On Wall Paper During This Sale

- 5¢ roll—Wall papers suitable for all rooms; florals, set designs and stripes, in good colorings. Regularly 12½¢ to 15¢.
- 2½¢ roll—Wall papers, in all designs; a good, clean choice of patterns. Regularly 8¢ and 10¢.

Fourth Floor—BOWMAN'S.

Choice of Any Fancy Suit In the Store---\$10.00

This includes all suits except the extra sizes and plain tailored suits that we sell and buy every day in the year. It includes all broadcloths, in medium and long lengths—it includes all poplins that are trimmed in any way—it includes all novelty suits for misses and women. There are suits among them that were \$37.50, \$35.00, \$30.00, \$27.50, \$25.00. They are the last that have arrived in the store.

Extra Size Suits That Were \$15.00 \$18.00 and \$20.00, at \$10.00

New suits, plain tailored and of high quality. Not suits that have been bought under price to be sold under price, but suits that are correct in all details. In black or navy serges and poplins.

Suits of Excellent Tailoring and Materials, But Not of the Latest Modes, at \$3.98

Serges, poplins, mixtures. Remarkable values from a quality standpoint. Good to put on to-morrow and wear—not one of them that is of really old style. The skirts alone are worth much more than the price of the whole suit.

Second Floor—BOWMAN'S.

Cloth Coats Will Disappear at \$5.98 and \$9.98

Absolute clearance of coats we've been selling at \$10.00, \$15.00, \$20.00 and \$25.00. Zibelines, kerseys, broadcloths, boucles, astrachans, Arabian lambs, Persians, mixtures. The wanted models—Fox trots, Balmacaans, belted and half belted effects, flared models—all fashionable styles.

Second Floor—BOWMAN'S.

Clearing of Petticoats

- \$1.00 Black Petticoats, 49¢—Genuine \$1.00 petticoats of Italian twills in fast black only. Full width for circular skirts. Two good models. Not more than two to each customer.
- \$2.50 Messaline Petticoats, \$1.19—and these are just as advertised—\$2.50 petticoats at \$1.19. All the wanted colors. Pure silk messaline with deep flounces.
- \$3.50 and \$4.00 Pure Jersey Silk Petticoats, \$1.98—one of the best bargains of the Clearing Sale. Not all colors but a great many good shades. Among them are some very beautiful light colors.

Second Floor—BOWMAN'S.



From the Muslin-wear Dept. Come Splendid Clearing Lots

- Women's Gowns, 79¢—regularly \$1.00 to \$1.50—made of fine soft minkoak; low, high and V-necks; long and short sleeves; trimmed with fine embroidery, insertion, lace, medallions and ribbon-run beading. Slightly soiled.
- Soiled Underwear, 50¢—regularly \$1.00 to \$1.50;—consisting of skirts, drawers, combinations and princess slips; trimmed with lace, embroidery and insertion, ribbon-run beading. Made of nainsook.
- Flannelette Gowns, 59¢—regularly 75¢ to 98¢—double yokes back and front; with and without collars; plain white and neat stripes of blue and pink; finished with neat braids.

Second Floor—BOWMAN'S.

Mirrors: Clearing at 33¢

There's a look-in for everyone in these special mirrors, 17x15 inches, with a pretty picture on top. Useful, as well as ornamental. Regular price, 69¢.

Fourth Floor—BOWMAN'S.

Clearing of House Dresses--69¢

The market is full of low price house dresses. We can buy them from a hundred makers to retail at almost any price. And any dress can be called a \$1.00 dress—or a \$1.25 dress—but that doesn't make them worth a cent more than their real value. These dresses are \$1.00, \$1.25 and \$1.50 dresses. More of them are worth \$1.25 than are worth \$1.00—and a fair proportion are worth \$1.50. When this sale is over any that are left will be sold at the regular prices. Gingham, chambrays, percales, madras and fleeced. Sizes 34 to 44.

Second Floor—BOWMAN'S.

TO-MORROW EVENING

The announcements will tell of extraordinary Clearing Reductions in

- Men's Suits
- Men's Overcoats
- Boys' Clothing
- Men's Furnishings
- Floor Coverings
- House Furnishings
- Other Departments

Special Prices On Wanted Domestic

- Flannelette at 6¼¢ yd.—regularly 10¢ and 12½¢—suitable for waists, or comfort covering.
- Pillow Tubing, 12½¢ yd.—regularly 18¢ and 20¢—bleached, 40 and 42 inches wide.
- Bed Ticking Remnants, 6¼¢ yd.—blue stripes, and fancy.
- Sheets at 64¢—regularly 95¢; made of Mohawk muslin; marked E. S.; have a few oil spots, which will come out after washing—otherwise perfect; size 90x90 inches.
- Sheets at 29¢—regularly 50¢;—seamed; laundered; 3-inch hems; size 72x90 inches.
- Pillow Cases at 18¢—regularly 30¢;—embroidered, scalloped; size 45x36 inches.
- Outing Flannel, 5¼¢ yd.—regularly 10¢;—27 inches wide; in light or dark patterns; short lengths.
- White Wool Flannel, 35¢ yd.—regularly 45¢;—36 inches wide; cut from full pieces.
- Unbleached Sheeting, 22¢ yd.—regularly 30¢;—30 inches wide; smooth, round even thread.

Main Floor—BOWMAN'S.