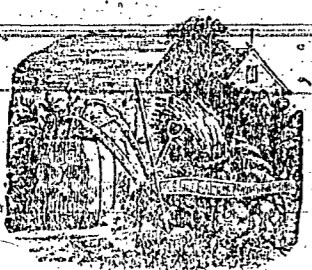


Farmers' Department.



June Work on a Farm.

In June, all the hoed crops require constant attention, and their treatment during this month will decide whether they are to be materially benefited, or not, by atmospheric influences.

Soft Soap and Seed Corn.

Somebody published a recommendation to increase the crop of corn by not knowing how many bushels per acre, by soaking the seed twenty-four hours in copperas water, and then coating it with soap.

Discussion on Corn.

Mr. S. C. Willets, of Holmesburg, inquired as to the success which had attended the planting of corn this season.

Dr. C. R. King, of Andalusia, Bucks County, had experienced the same difficulty, and with him the second planting had turned out worse than the first.

Mr. Landreth's experience during this spring had not agreed with that of the last speakers. On some portions of his land the corn had come up irregularly.

Mr. Willets remarked that the millers had observed the inferior quality of much of the corn of last year, the meal of which was far below the average grade.

Mr. A. T. Nowbold believed that the varying aspect of the surface of the

posure, might in part account for differences in germinating. Some fields were much more exposed to the chilling influences of the cold clear nights which we had during the last month or six weeks.

Mr. John S. Harris, of Germantown, had noticed that the papers of the Western States contained complaints of the coming corn crop, similar to those made here.

Dr. A. L. Kennedy inquired if the so-called Chinese Sugar Cane, or Sorghum Saccharatum, a variety of broom corn, the seeds of which were now being distributed by the Patent Office, and which was cultivated for fodder, had been tried by any of the members.

The Chair replied that he had neither seen nor heard any account of such a trial, although many of the seeds distributed by that office were almost as well known in this country as in that whence they had been imported.

Business Cards.

GEORGE EGGE, JUSTICE OF THE PEACE. Office opposite the West end of the Court House April 23, 1856.

P. HUMRICH, Attorney at Law. Office on North Hanover street, a few doors south of Glass Hotel.

A. N. GREEN, Attorney at Law. Office at East Main Street, Mechanicsburg, Pa. Will attend to SURVEYING in connection with his profession.

GEO. W. NEIDICH, DENTIST. Office and residence opposite Marlborough Hall, West Main street, Carlisle.

DR. S. B. KIEFFER, Office in North Hanover street two doors from West & Campbell's street.

DOCTOR S. P. ZIEGLER, Office and Residence East Main Street, third door above the Market House.

WILLIAM C. RHEEM, Attorney at Law. Office in Main Street, Carlisle, Pa.

DR. J. C. LOOMIS, DENTIST. South Hanover street, next door to the Post Office.

DR. GEORGE S. SPAHRIGT, DENTIST. From the Baltimore College of Dental Surgery.

W. M. RILEY, DENTIST. Having been instructed in the art of Dr. Geo. Z. Brodz.

F. N. ROSENFEEL, House, Sign Painter and Paper-hanger.

SCRIVENER AND CONVEYANCER. The Register of Cumberland County is now open.

G. W. BRANDT, Manufacturer of Mineral Waters, French Mead.

SNYDER & FARLANE, LAND AGENTS. MINNEAPOLIS, Opposite the Suspension Bridge.

REFERENCES. Hon. Alex. Ramsey, Ex-Governor, Hon. H. M. Bliss, Delegate to Congress, Minnesota.

30,000 Acres of Unimproved Land for Sale, at from \$2 to \$10 per acre.

FRESH HERRING. The subscriber has just received a lot of Superior Fresh Herring.

DWELLING FOR RENT. The dwelling attached to Rawlin's Shoe Store, north east corner Main and Pitt streets.

Cheap Job Printing done here.

Education.

PLAINFIELD ACADEMY. Near CARLISLE, Pa. The Twentieth Session (two months) will commence on May 6th.

WHITE HALL ACADEMY. This session of the White Hall Academy will commence on Monday, the 5th of May, next.

CARLISLE FEMALE SEMINARY. MR. and MRS. CLARK, who have been for several years engaged in teaching, respectfully announce to the citizens of Carlisle and vicinity.

PREPARE FOR WINTER! PARLOR AND COOKING STOVES. The subscriber is agent for the above company.

COMMERCIAL COLLEGE. removed to the new and spacious Hall, No. 99 and 101 North Hanover street, Carlisle, Pa.

DR. J. C. LOOMIS, DENTIST. South Hanover street, next door to the Post Office.

DR. GEORGE S. SPAHRIGT, DENTIST. From the Baltimore College of Dental Surgery.

W. M. RILEY, DENTIST. Having been instructed in the art of Dr. Geo. Z. Brodz.

F. N. ROSENFEEL, House, Sign Painter and Paper-hanger.

SCRIVENER AND CONVEYANCER. The Register of Cumberland County is now open.

G. W. BRANDT, Manufacturer of Mineral Waters, French Mead.

SNYDER & FARLANE, LAND AGENTS. MINNEAPOLIS, Opposite the Suspension Bridge.

REFERENCES. Hon. Alex. Ramsey, Ex-Governor, Hon. H. M. Bliss, Delegate to Congress, Minnesota.

30,000 Acres of Unimproved Land for Sale, at from \$2 to \$10 per acre.

FRESH HERRING. The subscriber has just received a lot of Superior Fresh Herring.

DWELLING FOR RENT. The dwelling attached to Rawlin's Shoe Store, north east corner Main and Pitt streets.

Cheap Job Printing done here.

Banks.

CARLISLE DEPOSIT BANK. FIVE PER CENT. At a meeting of the Board of Directors, held on the 6th of March, 1856.

CUMBERLAND VALLEY BANK. PROPRIETORS. WILLIAM KER, MELCHOR BRUNNEMAN, ROBERT C. STRETTET, JOHN S. STRETTET, RICHARD WOODS, JOHN C. DUNLAP, JOHN A. STURTEVANT.

Remittances made to England, Ireland or the Continent. The faithful and confidential execution of all orders entrusted to them, may be relied upon.

PREPARE FOR WINTER! PARLOR AND COOKING STOVES. The subscriber is agent for the above company.

COMMERCIAL COLLEGE. removed to the new and spacious Hall, No. 99 and 101 North Hanover street, Carlisle, Pa.

DR. J. C. LOOMIS, DENTIST. South Hanover street, next door to the Post Office.

DR. GEORGE S. SPAHRIGT, DENTIST. From the Baltimore College of Dental Surgery.

W. M. RILEY, DENTIST. Having been instructed in the art of Dr. Geo. Z. Brodz.

F. N. ROSENFEEL, House, Sign Painter and Paper-hanger.

SCRIVENER AND CONVEYANCER. The Register of Cumberland County is now open.

G. W. BRANDT, Manufacturer of Mineral Waters, French Mead.

SNYDER & FARLANE, LAND AGENTS. MINNEAPOLIS, Opposite the Suspension Bridge.

REFERENCES. Hon. Alex. Ramsey, Ex-Governor, Hon. H. M. Bliss, Delegate to Congress, Minnesota.

30,000 Acres of Unimproved Land for Sale, at from \$2 to \$10 per acre.

FRESH HERRING. The subscriber has just received a lot of Superior Fresh Herring.

DWELLING FOR RENT. The dwelling attached to Rawlin's Shoe Store, north east corner Main and Pitt streets.

Cheap Job Printing done here.

Agricultural.

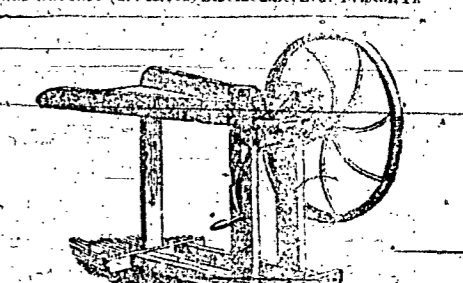
IMPROVED SELF-ADJUSTING HAY ELEVATORS OR HOISTING FORKES. For raising Hay, Elevators with anti-friction rollers, &c.

AGRICULTURAL IMPLEMENTS. PARSONS, MOFFET & CO. Agricultural Warehouse and Seed Store, corner 7 and Market streets, Philadelphia.

AGRICULTURAL IMPLEMENTS. PARSONS, MOFFET & CO. Agricultural Warehouse and Seed Store, corner 7 and Market streets, Philadelphia.

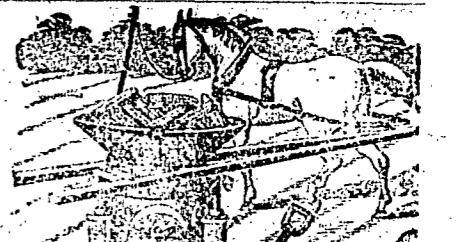


PARSONS, MOFFET & CO. Agricultural Warehouse and Seed Store, corner 7 and Market streets, Philadelphia.



PARSONS, MOFFET & CO. Agricultural Warehouse and Seed Store, corner 7 and Market streets, Philadelphia.

PATENT SELF-SHARPENING KNIFE. YANKER BIRD CUTTERS, Manufactured by ADDICK & SARGENT, No. 410 Market street, Philadelphia.



SCOTT'S LITTLE GIANT CORN AND COB MILL, PATENTED MAY 10th, 1855.

These Mills are not only guaranteed superior to all others in their construction and quality of materials but in the amount and quality of work they perform.

SCOTT'S NIMBLE GIANT GRIND MILL (PATENTED MAY, 1855). This Mill is the most complete and important article for Farmers and others, having horse-power or other conveniences for grinding a belt.

THE FRANKLIN FIRE INSURANCE COY. OF PHILADELPHIA. Charter Perpetual. Capital paid in. Office 163 1/2 Chestnut street.

THE ALLEN AND EAST PENNSYLVANIA MUTUAL FIRE INSURANCE COMPANY of Cumberland county, incorporated by an act of Assembly.

TO THE FARMING COMMUNITY. The attention of Farmers is invited to WAKEFIELD'S HAND-CORN-PLANTER.

JOHN P. LYNE & SON, North Hanover street, Carlisle, Pa.