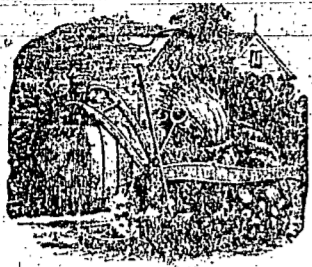


Agricultural Department.



Prepare for Spring.

Spring now commences, and every farmer should examine his mowing beds, with a view to ascertain if they are hide-bound. If so, they should be top-dressed with such soluble materials as are needed by the soil; and in most cases the missing ingredients will be found to be analogous to those contained in the Nitrogenized Superphosphate of Lime.

In the selection of seeds great care should be used; and those of a light kind, such as the carrot, parsnip, etc., should be fresh. In the early cultivation of root crops, tools for the disturbance of the immediate surface should be frequently used, so that weeds cannot become of such size as to require hand-work.

In selecting plants to be put out in early spring, give preference to those raised in the fall and kept in cold-frames during winter. They are superior to hot-bed plants, as they are not checked by the transplanting; and unusual frosts such as sometimes occur after the commencement of spring will not injure them.

inside of cellar windows, so as to be safely put in an advanced state whenever the weather shall be sufficiently settled.

Put Your Names in Sight.

The N. Y. Country Gentleman, an agricultural paper, suggests to Farmers the propriety of putting up their names in large letters upon their doors, when living near the road, or upon a gate post if the house stands back.

Drug Stores.

DRUGS AND CHEMICALS. With a splendid variety of CONFECTIONERY AND FANCY GOODS. The undersigned has just replenished his stock of goods and his Drugs and Chemicals, have been selected with great care.

DRUGS! DRUGS! DRUGS! Fresh Supplies! I have just received a fresh stock of Medicines, Patents, Glass Oil, etc., which, having been purchased with great care at the best city houses, I can confidently recommend to Families, Physicians, country Merchants and Dealers, as being fresh and pure.

FRESH DRUGS, MEDICINES, &c. I have just received from Philadelphia and New York very extensive additions to my former stock, embracing nearly every article of Medicine now in use, together with various kinds of Foreign and Domestic Perfumery, Stationery, Fine Cutlery, Bluing, Ink, and almost every description of the most valuable variety of other articles, which I am determined to sell at the lowest prices.

ROBERT B. SMILEY, CABINET MAKER AND UNDERTAKER. North Hanover street, next door to Glass's Hotel.

EXTENSIVE FURNITURE ROOM. JAMES H. WEAVER would respectfully call the attention of Housekeepers and the public to his extensive stock of elegant FURNITURE, including Sofas, Wardrobes, Chests and Tables, Dressing and Plain Bureaus, and every other article in his branch of business.

Cheap Job Printing done here.

Education.

WHITE HALL ACADEMY. Three miles west of Harrisburg. The eleventh session of this Institution will commence on Monday, the 5th of May, next.

PLAINFIELD ACADEMY. Near Carlisle, Pa. The Nineteenth Session (five months) will commence November 6th. A new building has been erected containing Gymnasium, Music Room, &c.

CARLISLE FEMALE SEMINARY. MR. and MRS. CLARK, who have been for several years engaged in teaching, respectfully announce to the citizens of Carlisle and vicinity, that on the 1st of April, 1856, they will open in Leather Street, in the house lately occupied by Dr. Blumenthal, a SEMINARY FOR YOUNG LADIES.

COMMERCIAL COLLEGE. Removed to the new and spacious Hall, No. 90 and 101 BALTIMORE STREET, Baltimore, Md. O. K. CHAMBERLAIN, Principal and Lecturer upon Mercantile Calculations.

DR. GEORGE S. SEAR. DENTIST. Office at the residence of Mrs. M. H. Sear, No. 101 North Second Street, Philadelphia.

HOWARD ASSOCIATION. PHILADELPHIA. IMPORTANT ANNOUNCEMENT. To all persons afflicted with various diseases, such as Scrophulous, Impure Blood, Gonorrhoea, Gleet, &c., &c., &c.

INSURANCE. CARLISLE AGENCY, FOR INDEMNITY AGAINST LOSS BY FIRE. THE FRANKLIN FIRE INSURANCE COY., OF PHILADELPHIA.

FIRE INSURANCE.—THE ALLEN AND EAST PENNSYLVANIA MUTUAL FIRE INSURANCE COMPANY of Cumberland county, incorporated by an act of Assembly, is now fully organized, and in operation under the management of the following commissioners:

DR. GEORGE S. SEAR. DENTIST. Office at the residence of Mrs. M. H. Sear, No. 101 North Second Street, Philadelphia.

DR. GEORGE S. SEAR. DENTIST. Office at the residence of Mrs. M. H. Sear, No. 101 North Second Street, Philadelphia.

Philadelphia.

REMOVED.—E. NEWLAND & CO'S Wholesale and Retail LOOKING-GLASS AND PICTURE FRAME MANUFACTORY, No. 126 ARCH Street, opposite the Theater, Philadelphia.

MILLINERY GOODS.—1856.—FOR FALL SALES. JOHN STONE & SONS, No. 45, South Second Street, Philadelphia.

F. H. SMITH, PORT MONNAIE, POCKET BOOK AND DRESSING CASE MANUFACTURER, N.W. corner 4th and Chestnut streets PHILADELPHIA.

HERRING'S PATENT CHAMPI. ON FIRE PROOF SAFES, with the patent Powder Proof Locks, which were awarded separate Medals at the World's Fair, London, 1851, and also at the World's Fair, New York, 1853, &c.

HOWARD ASSOCIATION. PHILADELPHIA. IMPORTANT ANNOUNCEMENT. To all persons afflicted with various diseases, such as Scrophulous, Impure Blood, Gonorrhoea, Gleet, &c., &c., &c.

DOLLARD, Premium Artist in Hair. Inventor of the Colored and Cinnamon Ventilating Wig and Elastic Band Toupees.

FRENCH TRUSSES.—Hernia or Rupture successfully treated and comfort insured, by use of the elegant French Trusses, imported by the subscriber, and made to order expressly for his sales.

DR. GEORGE S. SEAR. DENTIST. Office at the residence of Mrs. M. H. Sear, No. 101 North Second Street, Philadelphia.

DR. GEORGE S. SEAR. DENTIST. Office at the residence of Mrs. M. H. Sear, No. 101 North Second Street, Philadelphia.

DR. GEORGE S. SEAR. DENTIST. Office at the residence of Mrs. M. H. Sear, No. 101 North Second Street, Philadelphia.

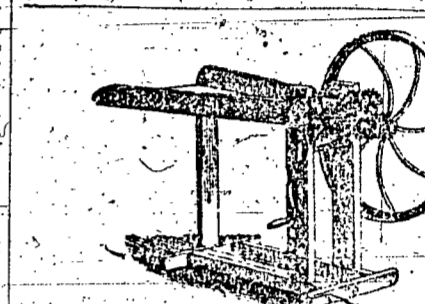
Agricultural.

HAY AND STRAW CUTTERS, CORN SHELLERS.—A large assortment of improved Hay, Straw and Fodder Cutters, new on hand.

AGRICULTURAL IMPLEMENTS. PENNOCK'S CELEBRATED WHEAT DRILL. Adapted also for sowing oats, grass seeds and guano.

LANDRETH'S AGRICULTURAL WAREHOUSE. Nos. 21 and 23 South Sixth Street PHILADELPHIA.

AGRICULTURAL IMPLEMENT MANUFACTORY, Bristol, Pa. SEND ORDERS (370 Acres) Bloomsdale, near Bristol, Pa.



PATENT SELF-SHARPENING.

PATENT SELF-SHARPENING. WANKER FRED CUTTERS, manufactured by ABRAHAM & SARGENT, No. 410 Market Street, Philadelphia.



SCOTT'S LITTLE GIANT CORN.

SCOTT'S LITTLE GIANT CORN AND COR MILL, PATENTED MAY 16th, 1854. THE LITTLE GIANT, though but recently introduced from the West, now stands pre-eminently as the most efficient, and popular Farm Mill of the age.

SCOTT'S NIMBLE GIANT GRAIN MILL. (PATENTED MAY, 1855.) This Mill is a most complete and important article for Planters, Farmers and others, having horse-power or other conveniences for running a belt.

CORN SHELLERS, STRAW CUTTERS. A large assortment of Superior Corn Shellers, including Reading's Patent, capable of shelling 1000 bushels of Corn per day.

CORN SHELLERS. The subscriber having in the last few years framed upwards of a hundred of the best Corn Shellers for Henry H. Saxon, wishes to inform the Farmers of Cumberland county that he is prepared to frame them anew.