

R-R-TIME-TABLES

Pennsylvania RAILROAD

WEST PENNSYLVANIA DIVISION

Schedule in effect Jan. 1, 1906

Trains leave BUTLER as follows:
For Allegheny and way stations, 6:15 and 10:35 a. m. and 4:25 p. m. week days; 7:30 a. m. and 5:05 p. m. Sundays.

Trains leave via KISKIMETUS JUNCTION as follows:
For Red Bank and Old City, 6:15, 8:40, 10:35 a. m. and 4:20 p. m. week days; 7:30 a. m. and 5:05 p. m. Sundays.

Trains leave via TURTLE CREEK as follows:
For Allegheny and way stations, 6:15 and 10:35 a. m. and 4:25 p. m. week days; 7:30 a. m. and 5:05 p. m. Sundays.

Trains leave via BUFFALO AND ALLEGHENY VALLEY DIVISION as follows:
For Buffalo and way stations, 6:15 and 10:35 a. m. and 4:25 p. m. week days; 7:30 a. m. and 5:05 p. m. Sundays.

Trains leave via BUFFALO AND ALLEGHENY VALLEY DIVISION as follows:
For Buffalo and way stations, 6:15 and 10:35 a. m. and 4:25 p. m. week days; 7:30 a. m. and 5:05 p. m. Sundays.

Trains leave via BUFFALO AND ALLEGHENY VALLEY DIVISION as follows:
For Buffalo and way stations, 6:15 and 10:35 a. m. and 4:25 p. m. week days; 7:30 a. m. and 5:05 p. m. Sundays.

Trains leave via BUFFALO AND ALLEGHENY VALLEY DIVISION as follows:
For Buffalo and way stations, 6:15 and 10:35 a. m. and 4:25 p. m. week days; 7:30 a. m. and 5:05 p. m. Sundays.

Trains leave via BUFFALO AND ALLEGHENY VALLEY DIVISION as follows:
For Buffalo and way stations, 6:15 and 10:35 a. m. and 4:25 p. m. week days; 7:30 a. m. and 5:05 p. m. Sundays.

Trains leave via BUFFALO AND ALLEGHENY VALLEY DIVISION as follows:
For Buffalo and way stations, 6:15 and 10:35 a. m. and 4:25 p. m. week days; 7:30 a. m. and 5:05 p. m. Sundays.

Trains leave via BUFFALO AND ALLEGHENY VALLEY DIVISION as follows:
For Buffalo and way stations, 6:15 and 10:35 a. m. and 4:25 p. m. week days; 7:30 a. m. and 5:05 p. m. Sundays.

Trains leave via BUFFALO AND ALLEGHENY VALLEY DIVISION as follows:
For Buffalo and way stations, 6:15 and 10:35 a. m. and 4:25 p. m. week days; 7:30 a. m. and 5:05 p. m. Sundays.

Trains leave via BUFFALO AND ALLEGHENY VALLEY DIVISION as follows:
For Buffalo and way stations, 6:15 and 10:35 a. m. and 4:25 p. m. week days; 7:30 a. m. and 5:05 p. m. Sundays.

Trains leave via BUFFALO AND ALLEGHENY VALLEY DIVISION as follows:
For Buffalo and way stations, 6:15 and 10:35 a. m. and 4:25 p. m. week days; 7:30 a. m. and 5:05 p. m. Sundays.

Trains leave via BUFFALO AND ALLEGHENY VALLEY DIVISION as follows:
For Buffalo and way stations, 6:15 and 10:35 a. m. and 4:25 p. m. week days; 7:30 a. m. and 5:05 p. m. Sundays.

Trains leave via BUFFALO AND ALLEGHENY VALLEY DIVISION as follows:
For Buffalo and way stations, 6:15 and 10:35 a. m. and 4:25 p. m. week days; 7:30 a. m. and 5:05 p. m. Sundays.

Trains leave via BUFFALO AND ALLEGHENY VALLEY DIVISION as follows:
For Buffalo and way stations, 6:15 and 10:35 a. m. and 4:25 p. m. week days; 7:30 a. m. and 5:05 p. m. Sundays.

Trains leave via BUFFALO AND ALLEGHENY VALLEY DIVISION as follows:
For Buffalo and way stations, 6:15 and 10:35 a. m. and 4:25 p. m. week days; 7:30 a. m. and 5:05 p. m. Sundays.

Trains leave via BUFFALO AND ALLEGHENY VALLEY DIVISION as follows:
For Buffalo and way stations, 6:15 and 10:35 a. m. and 4:25 p. m. week days; 7:30 a. m. and 5:05 p. m. Sundays.

Trains leave via BUFFALO AND ALLEGHENY VALLEY DIVISION as follows:
For Buffalo and way stations, 6:15 and 10:35 a. m. and 4:25 p. m. week days; 7:30 a. m. and 5:05 p. m. Sundays.

Trains leave via BUFFALO AND ALLEGHENY VALLEY DIVISION as follows:
For Buffalo and way stations, 6:15 and 10:35 a. m. and 4:25 p. m. week days; 7:30 a. m. and 5:05 p. m. Sundays.

Trains leave via BUFFALO AND ALLEGHENY VALLEY DIVISION as follows:
For Buffalo and way stations, 6:15 and 10:35 a. m. and 4:25 p. m. week days; 7:30 a. m. and 5:05 p. m. Sundays.

Trains leave via BUFFALO AND ALLEGHENY VALLEY DIVISION as follows:
For Buffalo and way stations, 6:15 and 10:35 a. m. and 4:25 p. m. week days; 7:30 a. m. and 5:05 p. m. Sundays.

Trains leave via BUFFALO AND ALLEGHENY VALLEY DIVISION as follows:
For Buffalo and way stations, 6:15 and 10:35 a. m. and 4:25 p. m. week days; 7:30 a. m. and 5:05 p. m. Sundays.

Trains leave via BUFFALO AND ALLEGHENY VALLEY DIVISION as follows:
For Buffalo and way stations, 6:15 and 10:35 a. m. and 4:25 p. m. week days; 7:30 a. m. and 5:05 p. m. Sundays.

Trains leave via BUFFALO AND ALLEGHENY VALLEY DIVISION as follows:
For Buffalo and way stations, 6:15 and 10:35 a. m. and 4:25 p. m. week days; 7:30 a. m. and 5:05 p. m. Sundays.

Trains leave via BUFFALO AND ALLEGHENY VALLEY DIVISION as follows:
For Buffalo and way stations, 6:15 and 10:35 a. m. and 4:25 p. m. week days; 7:30 a. m. and 5:05 p. m. Sundays.

Trains leave via BUFFALO AND ALLEGHENY VALLEY DIVISION as follows:
For Buffalo and way stations, 6:15 and 10:35 a. m. and 4:25 p. m. week days; 7:30 a. m. and 5:05 p. m. Sundays.

Trains leave via BUFFALO AND ALLEGHENY VALLEY DIVISION as follows:
For Buffalo and way stations, 6:15 and 10:35 a. m. and 4:25 p. m. week days; 7:30 a. m. and 5:05 p. m. Sundays.

Trains leave via BUFFALO AND ALLEGHENY VALLEY DIVISION as follows:
For Buffalo and way stations, 6:15 and 10:35 a. m. and 4:25 p. m. week days; 7:30 a. m. and 5:05 p. m. Sundays.

Trains leave via BUFFALO AND ALLEGHENY VALLEY DIVISION as follows:
For Buffalo and way stations, 6:15 and 10:35 a. m. and 4:25 p. m. week days; 7:30 a. m. and 5:05 p. m. Sundays.

Trains leave via BUFFALO AND ALLEGHENY VALLEY DIVISION as follows:
For Buffalo and way stations, 6:15 and 10:35 a. m. and 4:25 p. m. week days; 7:30 a. m. and 5:05 p. m. Sundays.

Trains leave via BUFFALO AND ALLEGHENY VALLEY DIVISION as follows:
For Buffalo and way stations, 6:15 and 10:35 a. m. and 4:25 p. m. week days; 7:30 a. m. and 5:05 p. m. Sundays.

Trains leave via BUFFALO AND ALLEGHENY VALLEY DIVISION as follows:
For Buffalo and way stations, 6:15 and 10:35 a. m. and 4:25 p. m. week days; 7:30 a. m. and 5:05 p. m. Sundays.

Trains leave via BUFFALO AND ALLEGHENY VALLEY DIVISION as follows:
For Buffalo and way stations, 6:15 and 10:35 a. m. and 4:25 p. m. week days; 7:30 a. m. and 5:05 p. m. Sundays.

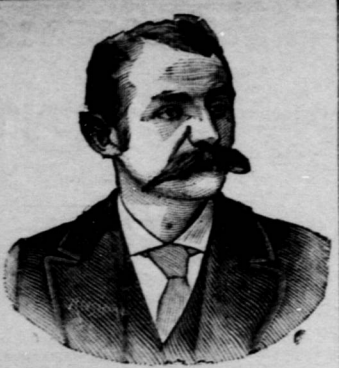
Trains leave via BUFFALO AND ALLEGHENY VALLEY DIVISION as follows:
For Buffalo and way stations, 6:15 and 10:35 a. m. and 4:25 p. m. week days; 7:30 a. m. and 5:05 p. m. Sundays.

Trains leave via BUFFALO AND ALLEGHENY VALLEY DIVISION as follows:
For Buffalo and way stations, 6:15 and 10:35 a. m. and 4:25 p. m. week days; 7:30 a. m. and 5:05 p. m. Sundays.

Trains leave via BUFFALO AND ALLEGHENY VALLEY DIVISION as follows:
For Buffalo and way stations, 6:15 and 10:35 a. m. and 4:25 p. m. week days; 7:30 a. m. and 5:05 p. m. Sundays.

Trains leave via BUFFALO AND ALLEGHENY VALLEY DIVISION as follows:
For Buffalo and way stations, 6:15 and 10:35 a. m. and 4:25 p. m. week days; 7:30 a. m. and 5:05 p. m. Sundays.

Trains leave via BUFFALO AND ALLEGHENY VALLEY DIVISION as follows:
For Buffalo and way stations, 6:15 and 10:35 a. m. and 4:25 p. m. week days; 7:30 a. m. and 5:05 p. m. Sundays.



DR. E. GREWER

No. 229 1-2 SOUTH MAIN ST

NEXT DOOR TO GUARANTY SAFE DEPOSIT & TRUST CO.

BUTLER, PA. ROOMS 1, 2, AND 3.

Dr. E. Grewer is a graduate of the University of Pennsylvania, is now permanently located at the above address where he treats all chronic diseases of men, women and children.

Diseases of the Nervous System, the symptoms of which are dizziness, lack of confidence, sexual weakness in men and women, balling in the throat, spots floating before the eyes, loss of memory unable to concentrate the mind on one subject easily started when suddenly spoken to, and dull distressed mind which makes them for performing the duties of life, making happiness impossible, distressing the action of the heart, depression of the spirits, evil forebodings, cowardice, fear, dreams, melancholy, tire easy of company, feeling as tired in the morning as when retiring, lack of energy, nervousness, trembling, confusion of the mind, depression, constipation, weakness of the limbs, etc. Those so affected should consult us immediately and be restored to perfect health.

ARRIVE FROM NORTH. 6:10 a. m. daily, night express from Buffalo and Rochester.

ARRIVE FROM SOUTH. 4:30 p. m. daily, night express from Buffalo and Rochester.

ARRIVE FROM WEST. 6:10 a. m. daily, night express from Buffalo and Rochester.

ARRIVE FROM EAST. 6:10 a. m. daily, night express from Buffalo and Rochester.

ARRIVE FROM NORTH. 6:10 a. m. daily, night express from Buffalo and Rochester.

ARRIVE FROM SOUTH. 4:30 p. m. daily, night express from Buffalo and Rochester.

ARRIVE FROM WEST. 6:10 a. m. daily, night express from Buffalo and Rochester.

ARRIVE FROM EAST. 6:10 a. m. daily, night express from Buffalo and Rochester.

ARRIVE FROM NORTH. 6:10 a. m. daily, night express from Buffalo and Rochester.

ARRIVE FROM SOUTH. 4:30 p. m. daily, night express from Buffalo and Rochester.

ARRIVE FROM WEST. 6:10 a. m. daily, night express from Buffalo and Rochester.

ARRIVE FROM EAST. 6:10 a. m. daily, night express from Buffalo and Rochester.

ARRIVE FROM NORTH. 6:10 a. m. daily, night express from Buffalo and Rochester.

ARRIVE FROM SOUTH. 4:30 p. m. daily, night express from Buffalo and Rochester.

ARRIVE FROM WEST. 6:10 a. m. daily, night express from Buffalo and Rochester.

ARRIVE FROM EAST. 6:10 a. m. daily, night express from Buffalo and Rochester.

ARRIVE FROM NORTH. 6:10 a. m. daily, night express from Buffalo and Rochester.

ARRIVE FROM SOUTH. 4:30 p. m. daily, night express from Buffalo and Rochester.

ARRIVE FROM WEST. 6:10 a. m. daily, night express from Buffalo and Rochester.

ARRIVE FROM EAST. 6:10 a. m. daily, night express from Buffalo and Rochester.

ARRIVE FROM NORTH. 6:10 a. m. daily, night express from Buffalo and Rochester.

ARRIVE FROM SOUTH. 4:30 p. m. daily, night express from Buffalo and Rochester.

ARRIVE FROM WEST. 6:10 a. m. daily, night express from Buffalo and Rochester.

ARRIVE FROM EAST. 6:10 a. m. daily, night express from Buffalo and Rochester.

ARRIVE FROM NORTH. 6:10 a. m. daily, night express from Buffalo and Rochester.

ARRIVE FROM SOUTH. 4:30 p. m. daily, night express from Buffalo and Rochester.

ARRIVE FROM WEST. 6:10 a. m. daily, night express from Buffalo and Rochester.

ARRIVE FROM EAST. 6:10 a. m. daily, night express from Buffalo and Rochester.

ARRIVE FROM NORTH. 6:10 a. m. daily, night express from Buffalo and Rochester.

ARRIVE FROM SOUTH. 4:30 p. m. daily, night express from Buffalo and Rochester.

ARRIVE FROM WEST. 6:10 a. m. daily, night express from Buffalo and Rochester.

ARRIVE FROM EAST. 6:10 a. m. daily, night express from Buffalo and Rochester.

ARRIVE FROM NORTH. 6:10 a. m. daily, night express from Buffalo and Rochester.

ARRIVE FROM SOUTH. 4:30 p. m. daily, night express from Buffalo and Rochester.

ARRIVE FROM WEST. 6:10 a. m. daily, night express from Buffalo and Rochester.

ARRIVE FROM EAST. 6:10 a. m. daily, night express from Buffalo and Rochester.

When You Come Across This Trade Mark in red and white on each end of a package containing biscuit and crackers, you can rest assured that the contents are of the very highest order—fresh, clean, pure and perfectly baked.

The Butler German Coach Horse Association Offers to the breeders of Butler Co. their celebrated coach stallion Loehr 744.

DOCTOR RICHARDS 26689. The highly bred and handsome stallion Doctor Richards will stand for service at Butler Fair grounds in charge of the undersigned.

VENDETTA BOY 35266. The Wilkes stallion Vendetta Boy and the Percheron Stallion Brillant No. 27865 will be found at my barn during the summer of 1906.

"AMERICAN" Improved Variable Friction Feed Saw Mills. Fitted with new "Giant" Duplex rolleratchet saw works and quiet receder, strong, accurate, reliable and light running.

Henry Biehl. Just received the largest assortment of sewing machines we ever had in stock. We have an expert sewing machine repair man at reasonable prices.

Subscribe for the CITIZEN. The initial step to a tobacco crop must be made in earliest springtime. The first step is to select a good soil.

Pearson B. Nace's Livestock, Feed and Sale Table. Wick House Butler Penn's. Stable Room For 65 Horses.

SPRING SEEDING. Various People Tell What Their Experience Has Taught. Get the oats seeded before March goes out if you can, says an eastern authority.

MAPLE SUGAR. Maxims For the Makers From an Evaporator Company. Have all utensils thoroughly cleaned and scalded.

GARDEN HINTS. Is your garden on a hillside? If so, see that your furrows run at right angles to the incline. Remember, you want to retain moisture, not drain it away.

PAROID READY ROOFING. PAROID The Roofing with NO TAR. Won't dry out. Won't grow brittle. ANYONE can apply it. Tins, Nails and Cement in core of it.

WHEELER'S ROYAL GOLD ENAMEL PAINT. HENRY WHEELER & SON, 110 W. OHIO ST., ALLEGHENY, PA. PAROID READY ROOFING. PAROID The Roofing with NO TAR.

Bad Stomach Makes Bad Blood. You can not make sweet butter in a foul, unclean churn. The stomach serves as a churn in which to agitate, work up and distribute the food as it is being digested.

THE HOTBED. In the management of the hotbed there are five things to be taken into consideration—maintaining the heat, ventilating, watering, hardening off the plant and transplanting.

Handling the Baby Plants. When plants are well developed and almost large enough for planting the soil may be prepared for a short while during the warm parts of each day. This hardens the plants and makes them less liable to die when transplanted.

WHEELER'S ROYAL GOLD ENAMEL PAINT. HENRY WHEELER & SON, 110 W. OHIO ST., ALLEGHENY, PA. PAROID READY ROOFING. PAROID The Roofing with NO TAR.

Funeral Director, 245 S. MAIN ST., BUTLER, PA. NOTICE! NOTICE! NOTICE! REPAIR & HOLLER STOCK OF FINE FURNITURE.

TRAVELERS CHEQUES. Are issued in denominations of \$10, \$20, \$50, \$100 and \$500, with Foreign Money Values printed thereon, and are payable in gold or its equivalent, without discount or commission, by more than 15,000 correspondents throughout the world.

Butler Savings & Trust Co. 106 SOUTH MAIN STREET. LARGEST AND STRONGEST IN THE COUNTY. THE Butler County National Bank.

Farmers' National Bank, BUTLER, PA. CAPITAL \$100,000.00 SURPLUS AND PROFITS (earned) \$47,000.00 DIVIDENDS PAID \$6,000.00 None Stronger in the County.

ROBT. LEWIN & CO., Wholesale Dealers in Wines and Liquors, 14 SMITHFIELD STREET, PITTSBURG, PA.

We are Headquarters in Pittsburg, Pa., for the finest wines and liquors. We sell direct to the consumer. We prepay express charges on all orders of \$5.00 or over, and guarantee prompt shipment.

WHISKIES WINES and LIQUORS. Send Your Orders by Mail for Your WHISKIES WINES and LIQUORS.

MAX KLEIN & SONS 1318-20 Penn Ave., PITTSBURG, PA. EVERYTHING IN LIQUORS.

Try A Gallon of Our 4-year old at \$3.00 per Gallon. HUGH L. CONNELLY, 107 West Ohio Street, (Opposite Post Office.)

NOTICE! July 1st, 1906, Stahl Distilling Co. will sell by the gallon or barrel, pure Rye Whiskey of their own make, at Sales Room, Zellenpore, Pa.; also will fill and ship mail orders promptly after July 1st, 1906.

Wanted: At once several young women for employment in Laundry and Kitchen departments of the Hospital, Warren from \$10 to \$20 and \$25.00 per month. Write to Superintendent, Hospital, DuBois, Pa.

Wanted: At once several young women for employment in Laundry and Kitchen departments of the Hospital, Warren from \$10 to \$20 and \$25.00 per month. Write to Superintendent, Hospital, DuBois, Pa.

Wanted: At once several young women for employment in Laundry and Kitchen departments of the Hospital, Warren from \$10 to \$20 and \$25.00 per month. Write to Superintendent, Hospital, DuBois, Pa.

Wanted: At once several young women for employment in Laundry and Kitchen departments of the Hospital, Warren from \$10 to \$20 and \$25.00 per month. Write to Superintendent, Hospital, DuBois, Pa.

Wanted: At once several young women for employment in Laundry and Kitchen departments of the Hospital, Warren from \$10 to \$20 and \$25.00 per month. Write to Superintendent, Hospital, DuBois, Pa.

Wanted: At once several young women for employment in Laundry and Kitchen departments of the Hospital, Warren from \$10 to \$20 and \$25.00 per month. Write to Superintendent, Hospital, DuBois, Pa.