

The Summer is Here to Stay.

IT'S ABOUT TIME FOR YOUR VACATION. TO ENJOY IT YOU MUST BE DRESSED COMFORTABLY. WHAT IS THE PROPER THING? THAT IS OUR BUSINESS. WE LEAVE IT TO YOU TO CHOOSE THE PATTERN—YOU LEAVE IT TO US TO GIVE YOU THE FIT. WE CONSIDER IT A FAVOR FOR YOU TO COME AND SEE OUR LINE OF TWO-PIECE SUITS, EVEN THOUGH YOU DO NOT BUY.

THE STYLE IS RIGHT.
THE GOODS ARE RIGHT.
THE PRICE IS RIGHT.

Douthett & Graham.

INCORPORATED

BICKEL'S FOOTWEAR

A Grand Display of Fine Footwear in all the Latest Styles.

We are showing many styles in Ladies' Fine Shoes and Oxfords at prices sure to interest you.

Big Bargains in Misses' and Children's Shoes.

Large stock of Men's and Boys' Fine Shoes and Oxfords.

Repairing Promptly Done.

JOHN BICKEL.

Muselton's

We wish to announce ourselves at Home particularly to the Young Men and Ladies this week.

All the nobby dressers will turn in at this store for inspection of their NEW SPRING FOOTWEAR—which is clear up to the mark—just over their former efforts if that is possible.

YOU WILL FIND all the old favorite leathers. Some new leathers—early favorites.

For any price You wish to pay.

NEW LASTS! THE NEW TOES! All the style a shoe can carry. Ease!

We make a specialty of Men's heavy shoes. Just what you want for your early plowing. Give us a trial.

HUSELTON'S, Opposite Hotel Lowry.

PATRICIAN THE WOMAN'S SHOE THAT'S RIGHT

Just outtings find added pleasure where your feet enjoy perfect comfort. Whether at sea-shore or mountains—on trip or train—woods, fields, lake side or in the city, a pair of Patrician shoes will be found to possess every requisite that the fastidious woman demands. An infinite variety of styles—all one quality—the best. Price \$1.50. YOURS FOR SEVERAL.

DAUBENSPECK & TURNER. People's Phone 633. 108 S. Main St., Butler, Pa.

The Cyphers Incubator

It is the original and only genuine patent-dia-phragm, non-moisture and self ventilating incubator. Winner of Gold Medal and Highest Award at the Pan-American Exposition, October, 1901. The standard hatchery of the world. Call and see this incubator at the store of

J. G. & W. CAMPBELL

210 South Main Street, Butler, Pa.

FARM GARDEN

IN ALFALFA LAND.

The Hay Harvest and Its Machinery.

It is best not to cut a crop of alfalfa the first season, but to allow the field to get well started for the next year. However, under favorable circumstances one or even two or three crops may be obtained the first year. The number of cuttings depends upon the length of the season and the altitude. A. S. Hitchcock, agronomist in charge of grass and forage plant investigations, says of this crop as grown in the northwest states that at the higher altitudes or latitudes not more than two cuttings

may be possible. In the upper San Joaquin valley, in California, five or six cuttings are usually obtained. In the Lovelock valley, Nebraska, where large quantities of alfalfa are grown, three cuttings are made, with a yield of five to seven tons.

Alfalfa hay is prepared in the manner usual for hay crops, but the operations are modified somewhat by climatic conditions. Concerning methods in the dry regions of the northwest Mr. Hitchcock says: One man with a team may mow about fifteen acres a day. The alfalfa is usually raked within a few hours after mowing, thrown into bunches by hand and stacked as soon as convenient. If the hay is allowed to remain too long in the swath or windrow, too much loss of foliage occurs in stacking on account of the dryness of the air.

The hay is usually stacked by machinery. If the stack is made in the field, sweeps or bull racks are occasionally used for hauling the bunches to the stacks, but these implements have the serious objection of shattering the leaves, causing corresponding loss of valuable fodder. For this reason the bunches are usually loaded by hand on wagons provided with hayracks. At the stack the hay is unloaded from the wagons by horsepower, the machine used for this purpose being called a stacker or hay derrick.

The most common type of stacker throughout the northwest is some modification of the pole, or mast and boom, stacker. This is essentially a derrick, with pulleys and a hayfork, by which several hundred pounds of hay can be lifted from a wagon and deposited upon the stack. The stackers are generally homemade. The derrick may be supported by a single pole or by two poles, one at each end of the boom.

The most common type of stacker throughout the northwest is some modification of the pole, or mast and boom, stacker. This is essentially a derrick, with pulleys and a hayfork, by which several hundred pounds of hay can be lifted from a wagon and deposited upon the stack. The stackers are generally homemade. The derrick may be supported by a single pole or by two poles, one at each end of the boom.

The most common type of stacker throughout the northwest is some modification of the pole, or mast and boom, stacker. This is essentially a derrick, with pulleys and a hayfork, by which several hundred pounds of hay can be lifted from a wagon and deposited upon the stack. The stackers are generally homemade. The derrick may be supported by a single pole or by two poles, one at each end of the boom.

The most common type of stacker throughout the northwest is some modification of the pole, or mast and boom, stacker. This is essentially a derrick, with pulleys and a hayfork, by which several hundred pounds of hay can be lifted from a wagon and deposited upon the stack. The stackers are generally homemade. The derrick may be supported by a single pole or by two poles, one at each end of the boom.

The most common type of stacker throughout the northwest is some modification of the pole, or mast and boom, stacker. This is essentially a derrick, with pulleys and a hayfork, by which several hundred pounds of hay can be lifted from a wagon and deposited upon the stack. The stackers are generally homemade. The derrick may be supported by a single pole or by two poles, one at each end of the boom.

The most common type of stacker throughout the northwest is some modification of the pole, or mast and boom, stacker. This is essentially a derrick, with pulleys and a hayfork, by which several hundred pounds of hay can be lifted from a wagon and deposited upon the stack. The stackers are generally homemade. The derrick may be supported by a single pole or by two poles, one at each end of the boom.

The most common type of stacker throughout the northwest is some modification of the pole, or mast and boom, stacker. This is essentially a derrick, with pulleys and a hayfork, by which several hundred pounds of hay can be lifted from a wagon and deposited upon the stack. The stackers are generally homemade. The derrick may be supported by a single pole or by two poles, one at each end of the boom.

The most common type of stacker throughout the northwest is some modification of the pole, or mast and boom, stacker. This is essentially a derrick, with pulleys and a hayfork, by which several hundred pounds of hay can be lifted from a wagon and deposited upon the stack. The stackers are generally homemade. The derrick may be supported by a single pole or by two poles, one at each end of the boom.

The most common type of stacker throughout the northwest is some modification of the pole, or mast and boom, stacker. This is essentially a derrick, with pulleys and a hayfork, by which several hundred pounds of hay can be lifted from a wagon and deposited upon the stack. The stackers are generally homemade. The derrick may be supported by a single pole or by two poles, one at each end of the boom.

The most common type of stacker throughout the northwest is some modification of the pole, or mast and boom, stacker. This is essentially a derrick, with pulleys and a hayfork, by which several hundred pounds of hay can be lifted from a wagon and deposited upon the stack. The stackers are generally homemade. The derrick may be supported by a single pole or by two poles, one at each end of the boom.

The most common type of stacker throughout the northwest is some modification of the pole, or mast and boom, stacker. This is essentially a derrick, with pulleys and a hayfork, by which several hundred pounds of hay can be lifted from a wagon and deposited upon the stack. The stackers are generally homemade. The derrick may be supported by a single pole or by two poles, one at each end of the boom.

The most common type of stacker throughout the northwest is some modification of the pole, or mast and boom, stacker. This is essentially a derrick, with pulleys and a hayfork, by which several hundred pounds of hay can be lifted from a wagon and deposited upon the stack. The stackers are generally homemade. The derrick may be supported by a single pole or by two poles, one at each end of the boom.

The most common type of stacker throughout the northwest is some modification of the pole, or mast and boom, stacker. This is essentially a derrick, with pulleys and a hayfork, by which several hundred pounds of hay can be lifted from a wagon and deposited upon the stack. The stackers are generally homemade. The derrick may be supported by a single pole or by two poles, one at each end of the boom.

The most common type of stacker throughout the northwest is some modification of the pole, or mast and boom, stacker. This is essentially a derrick, with pulleys and a hayfork, by which several hundred pounds of hay can be lifted from a wagon and deposited upon the stack. The stackers are generally homemade. The derrick may be supported by a single pole or by two poles, one at each end of the boom.

The most common type of stacker throughout the northwest is some modification of the pole, or mast and boom, stacker. This is essentially a derrick, with pulleys and a hayfork, by which several hundred pounds of hay can be lifted from a wagon and deposited upon the stack. The stackers are generally homemade. The derrick may be supported by a single pole or by two poles, one at each end of the boom.

The unsprayed tops had been dead for some two weeks, while at least 50 per cent of the foliage was still alive on the sprayed tops. The sprayed and unsprayed portions were carefully selected with a view to uniformity. Each consisted of four rows fifty-eight feet long. The total yields calculated in bushels to the acre are as follows: Sprayed, 202 bushels per acre; unsprayed, 102 bushels per acre; increase in total yield as a result of spraying, 100 bushels.

This gain was not as large as it has been in seasons when the blight has come earlier and progressed more rapidly. On the other hand, under such conditions two or even three sprayings are necessary to preserve the foliage until the maturing of the crop. The gain of 124 bushels per acre as the result of a single timely spraying represents a saving of 25 bushels to the cost than when we have heretofore recorded.

We learned of cases where potato growers sprayed their plants twice last season in July and secured a little better crop for the simple reason that by the time the blight was destructive, the latter half of August, their plants were unprotected.

Our experience again serves to emphasize sharply the point we have repeatedly made, that in order to spray successfully a man must know what he is spraying for, watch his crop and spray intelligently as well as thoroughly. To paraphrase the old saying: "Timeliness is an important factor in success—that is, pays richly to use thoughtfulness, thoroughness and timeliness."

ROOT GROWTH.

One result of shallow irrigation may be possible. In the upper San Joaquin valley, in California, five or six cuttings are usually obtained. In the Lovelock valley, Nebraska, where large quantities of alfalfa are grown, three cuttings are made, with a yield of five to seven tons.

Alfalfa hay is prepared in the manner usual for hay crops, but the operations are modified somewhat by climatic conditions. Concerning methods in the dry regions of the northwest Mr. Hitchcock says: One man with a team may mow about fifteen acres a day. The alfalfa is usually raked within a few hours after mowing, thrown into bunches by hand and stacked as soon as convenient. If the hay is allowed to remain too long in the swath or windrow, too much loss of foliage occurs in stacking on account of the dryness of the air.

The hay is usually stacked by machinery. If the stack is made in the field, sweeps or bull racks are occasionally used for hauling the bunches to the stacks, but these implements have the serious objection of shattering the leaves, causing corresponding loss of valuable fodder. For this reason the bunches are usually loaded by hand on wagons provided with hayracks. At the stack the hay is unloaded from the wagons by horsepower, the machine used for this purpose being called a stacker or hay derrick.

The most common type of stacker throughout the northwest is some modification of the pole, or mast and boom, stacker. This is essentially a derrick, with pulleys and a hayfork, by which several hundred pounds of hay can be lifted from a wagon and deposited upon the stack. The stackers are generally homemade. The derrick may be supported by a single pole or by two poles, one at each end of the boom.

The most common type of stacker throughout the northwest is some modification of the pole, or mast and boom, stacker. This is essentially a derrick, with pulleys and a hayfork, by which several hundred pounds of hay can be lifted from a wagon and deposited upon the stack. The stackers are generally homemade. The derrick may be supported by a single pole or by two poles, one at each end of the boom.

The most common type of stacker throughout the northwest is some modification of the pole, or mast and boom, stacker. This is essentially a derrick, with pulleys and a hayfork, by which several hundred pounds of hay can be lifted from a wagon and deposited upon the stack. The stackers are generally homemade. The derrick may be supported by a single pole or by two poles, one at each end of the boom.

The most common type of stacker throughout the northwest is some modification of the pole, or mast and boom, stacker. This is essentially a derrick, with pulleys and a hayfork, by which several hundred pounds of hay can be lifted from a wagon and deposited upon the stack. The stackers are generally homemade. The derrick may be supported by a single pole or by two poles, one at each end of the boom.

The most common type of stacker throughout the northwest is some modification of the pole, or mast and boom, stacker. This is essentially a derrick, with pulleys and a hayfork, by which several hundred pounds of hay can be lifted from a wagon and deposited upon the stack. The stackers are generally homemade. The derrick may be supported by a single pole or by two poles, one at each end of the boom.

The most common type of stacker throughout the northwest is some modification of the pole, or mast and boom, stacker. This is essentially a derrick, with pulleys and a hayfork, by which several hundred pounds of hay can be lifted from a wagon and deposited upon the stack. The stackers are generally homemade. The derrick may be supported by a single pole or by two poles, one at each end of the boom.

The most common type of stacker throughout the northwest is some modification of the pole, or mast and boom, stacker. This is essentially a derrick, with pulleys and a hayfork, by which several hundred pounds of hay can be lifted from a wagon and deposited upon the stack. The stackers are generally homemade. The derrick may be supported by a single pole or by two poles, one at each end of the boom.

The most common type of stacker throughout the northwest is some modification of the pole, or mast and boom, stacker. This is essentially a derrick, with pulleys and a hayfork, by which several hundred pounds of hay can be lifted from a wagon and deposited upon the stack. The stackers are generally homemade. The derrick may be supported by a single pole or by two poles, one at each end of the boom.

The most common type of stacker throughout the northwest is some modification of the pole, or mast and boom, stacker. This is essentially a derrick, with pulleys and a hayfork, by which several hundred pounds of hay can be lifted from a wagon and deposited upon the stack. The stackers are generally homemade. The derrick may be supported by a single pole or by two poles, one at each end of the boom.

The most common type of stacker throughout the northwest is some modification of the pole, or mast and boom, stacker. This is essentially a derrick, with pulleys and a hayfork, by which several hundred pounds of hay can be lifted from a wagon and deposited upon the stack. The stackers are generally homemade. The derrick may be supported by a single pole or by two poles, one at each end of the boom.

The most common type of stacker throughout the northwest is some modification of the pole, or mast and boom, stacker. This is essentially a derrick, with pulleys and a hayfork, by which several hundred pounds of hay can be lifted from a wagon and deposited upon the stack. The stackers are generally homemade. The derrick may be supported by a single pole or by two poles, one at each end of the boom.

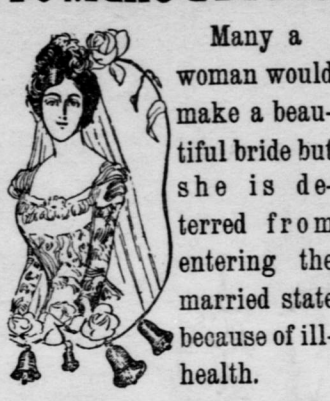
The most common type of stacker throughout the northwest is some modification of the pole, or mast and boom, stacker. This is essentially a derrick, with pulleys and a hayfork, by which several hundred pounds of hay can be lifted from a wagon and deposited upon the stack. The stackers are generally homemade. The derrick may be supported by a single pole or by two poles, one at each end of the boom.

The most common type of stacker throughout the northwest is some modification of the pole, or mast and boom, stacker. This is essentially a derrick, with pulleys and a hayfork, by which several hundred pounds of hay can be lifted from a wagon and deposited upon the stack. The stackers are generally homemade. The derrick may be supported by a single pole or by two poles, one at each end of the boom.

The most common type of stacker throughout the northwest is some modification of the pole, or mast and boom, stacker. This is essentially a derrick, with pulleys and a hayfork, by which several hundred pounds of hay can be lifted from a wagon and deposited upon the stack. The stackers are generally homemade. The derrick may be supported by a single pole or by two poles, one at each end of the boom.

The most common type of stacker throughout the northwest is some modification of the pole, or mast and boom, stacker. This is essentially a derrick, with pulleys and a hayfork, by which several hundred pounds of hay can be lifted from a wagon and deposited upon the stack. The stackers are generally homemade. The derrick may be supported by a single pole or by two poles, one at each end of the boom.

To Make a Bride



Many a woman would make a beautiful bride but she is deterred from entering the married state because of ill-health.

\$500 REWARD FOR WOMEN WHO CANNOT BE CURED.

The proprietors and makers of Dr. Pierce's Favorite Prescription now feel fully warranted in offering to pay \$500 in legal money of the United States for any case of Leucorrhoea, Female Weakness, Protrusion, or Falling of Womb which they cannot cure. All they ask is a fair and reasonable trial of their means of cure.

"If women would study the laws of health and the little more common sense there would not be such a large number to-day suffering with the various ailments which are the result of the Female Weakness, Protrusion, or Falling of Womb. When medicine is needed if they would take Dr. Pierce's Favorite Prescription they would have a chance to get well." I used Dr. Pierce's Favorite Prescription for several years ago and it cured me of the same ailment. I can give you the name of the doctor who cured me and I will give you the name of the doctor who cured me.

Dr. Pierce's Pleasant Pellets should be used with "Favorite Prescription" whenever a laxative is required.

THE CLEANSING AND HEALING CURE FOR CATARRH

ELLY'S Cream Balm is a safe and pleasant remedy for all cases of Catarrh of the Eye, Ear, Nose, Throat, and Lungs. It is a powerful antiseptic and disinfectant, and is used in the treatment of all cases of Catarrh of the Eye, Ear, Nose, Throat, and Lungs.

CATARRH OF THE HEAD is a common ailment, and is caused by the accumulation of mucus in the nasal cavity. It is characterized by a discharge of mucus from the nose, and is often accompanied by a sense of fullness in the head. It is caused by the accumulation of mucus in the nasal cavity.

HUMPHREYS' SPECIFIC is a powerful remedy for all cases of Catarrh of the Eye, Ear, Nose, Throat, and Lungs. It is a powerful antiseptic and disinfectant, and is used in the treatment of all cases of Catarrh of the Eye, Ear, Nose, Throat, and Lungs.

PAROID READY ROOFING is a powerful remedy for all cases of Catarrh of the Eye, Ear, Nose, Throat, and Lungs. It is a powerful antiseptic and disinfectant, and is used in the treatment of all cases of Catarrh of the Eye, Ear, Nose, Throat, and Lungs.

MADE IN 1, 2 AND 3 PLY is a powerful remedy for all cases of Catarrh of the Eye, Ear, Nose, Throat, and Lungs. It is a powerful antiseptic and disinfectant, and is used in the treatment of all cases of Catarrh of the Eye, Ear, Nose, Throat, and Lungs.

L. C. WICK, BUTLER, PA.

LUMBER REMOVAL.

We have removed our Marble and Granite shops from corner of Main and Clay streets to No. 300 N. Main street, (opposite W. D. Brandon's residence), where we will be pleased to meet our customers with figures that are right.

Monuments and Headstones of all kinds and are also prepared to give best figures on Iron Fence, Flower Vases etc. as we have secured the sole agency from the Stewart Iron Works of Cincinnati, Ohio, for this town and vicinity.

P. H. Sechler

Easy and Quick Soap-Making with **BANNER LYE**

To make the very best soap, simply dissolve a can of Banner Lye in cold water, melt 5 lbs. of grease, pour the lye water in the grease. Stir and put into molds.

CHICHESTER'S ENGLISH PENNYROYAL PILLS

ADJUSTABLE PIN.

MONUMENTAL WORK.

R-R-TIME-TABLES

BR & PH R
Time table in effect Nov. 22, 1903. Passenger trains leave and arrive at Butler as follows:

LEAVE FOR NORTH.
7:30 a. m., mixed for Punxsutawney, Du Bois and intermediate stations.
10:17 a. m., daily, vestibuled day express for Buffalo, connects at Ashford, week days, for Rochester.
6:30 p. m., local for Punx, Du Bois and intermediate stations.

ARRIVE FROM NORTH.
6:08 a. m., daily, night express from Buffalo and Rochester.
5:31 p. m., daily, vestibuled day express from Buffalo. Has connection at Ashford with Buffalo and Rochester.
8:45 p. m., week days, mixed train from Du Bois and Punxsutawney.

TRAINS LEAVE THE R. & O. STATION, ALLEGHENY, FOR BUTLER AND ROCHESTER AT 9:00 a. m. and 10:00 p. m., and for local points as far as DuBois at 5:10 p. m.

BU & RR
Time table in effect, May 15, 1904. Trains for South and West, leave Butler—town times—WEEK DAYS.

8:00 a. m., Allegheny Accommodation, 8:00 a. m., Allegheny & Cleveland Ex., 9:10 a. m., Allegheny Express.

11:45 a. m., Allegheny Accommodation, 1:40 p. m., Ellwood Accommodation, 2:30 p. m., Allegheny Ex., 3:20 p. m., Allegheny Ex., 4:10 p. m., Allegheny Ex., 5:00 p. m., Allegheny Ex.—New Castle.

SUNDAYS.
8:00 a. m., Allegheny & Cleveland Ex., 10:25 a. m., Allegheny Ex., 3:30 p. m., Allegheny Ex., 5:30 p. m., Allegheny Ex.—New Castle.

WESTERN PENNSYLVANIA DIVISION.
Schedule in effect May 29, 1904.

WEEK DAYS.
Butler, Pa. to Erie, Pa. (via Punxsutawney, Du Bois, and intermediate stations):
Butler, Pa. to Erie, Pa. (via Punxsutawney, Du Bois, and intermediate stations):

FOR THE EAST.
Butler, Pa. to Erie, Pa. (via Punxsutawney, Du Bois, and intermediate stations):
Butler, Pa. to Erie, Pa. (via Punxsutawney, Du Bois, and intermediate stations):

ESSEMER & LAKE ERIE RAILROAD COMPANY.
TIME TABLE IN EFFECT JUNE 1904.

NORTHWARD (Head end) Daily Except Sunday (Head end)
SOUTHWARD (Head end) Daily Except Sunday (Head end)

Butler, Pa. to Erie, Pa. (via Punxsutawney, Du Bois, and intermediate stations):
Butler, Pa. to Erie, Pa. (via Punxsutawney, Du Bois, and intermediate stations):

Butler, Pa. to Erie, Pa. (via Punxsutawney, Du Bois, and intermediate stations):
Butler, Pa. to Erie, Pa. (via Punxsutawney, Du Bois, and intermediate stations):

Butler, Pa. to Erie, Pa. (via Punxsutawney, Du Bois, and intermediate stations):
Butler, Pa. to Erie, Pa. (via Punxsutawney, Du Bois, and intermediate stations):

Butler, Pa. to Erie, Pa. (via Punxsutawney, Du Bois, and intermediate stations):
Butler, Pa. to Erie, Pa. (via Punxsutawney, Du Bois, and intermediate stations):

Butler, Pa. to Erie, Pa. (via Punxsutawney, Du Bois, and intermediate stations):
Butler, Pa. to Erie, Pa. (via Punxsutawney, Du Bois, and intermediate stations):

Butler, Pa. to Erie, Pa. (via Punxsutawney, Du Bois, and intermediate stations):
Butler, Pa. to Erie, Pa. (via Punxsutawney, Du Bois, and intermediate stations):

Butler, Pa. to Erie, Pa. (via Punxsutawney, Du Bois, and intermediate stations):
Butler, Pa. to Erie, Pa. (via Punxsutawney, Du Bois, and intermediate stations):

Butler, Pa. to Erie, Pa. (via Punxsutawney, Du Bois, and intermediate stations):
Butler, Pa. to Erie, Pa. (via Punxsutawney, Du Bois, and intermediate stations):

Butler, Pa. to Erie, Pa. (via Punxsutawney, Du Bois, and intermediate stations):
Butler, Pa. to Erie, Pa. (via Punxsutawney, Du Bois, and intermediate stations):

Butler, Pa. to Erie, Pa. (via Punxsutawney, Du Bois, and intermediate stations):
Butler, Pa. to Erie, Pa. (via Punxsutawney, Du Bois, and intermediate stations):

Butler, Pa. to Erie, Pa. (via Punxsutawney, Du Bois, and intermediate stations):
Butler, Pa. to Erie, Pa. (via Punxsutawney, Du Bois, and intermediate stations):

Winfield R R Co Time Table

In effect Nov. 30th, 1903. WESTWARD.

Leave West Winfield, Pa. for Butler, Pa. (via Punxsutawney, Du Bois, and intermediate stations):
Leave West Winfield, Pa. for Butler, Pa. (via Punxsutawney, Du Bois, and intermediate stations):

Leave Butler, Pa. for West Winfield, Pa. (via Punxsutawney, Du Bois, and intermediate stations):
Leave Butler, Pa. for West Winfield, Pa. (via Punxsutawney, Du Bois, and intermediate stations):

Leave Butler, Pa. for West Winfield, Pa. (via Punxsutawney, Du Bois, and intermediate stations):
Leave Butler, Pa. for West Winfield, Pa. (via Punxsutawney, Du Bois, and intermediate stations):

Leave Butler, Pa. for West Winfield, Pa. (via Punxsutawney, Du Bois, and intermediate stations):
Leave Butler, Pa. for West Winfield, Pa. (via Punxsutawney, Du Bois, and intermediate stations):

Leave Butler, Pa. for West Winfield, Pa. (via Punxsutawney, Du Bois, and intermediate stations):
Leave Butler, Pa. for West Winfield, Pa. (via Punxsutawney, Du Bois, and intermediate stations):

Leave Butler, Pa. for West Winfield, Pa. (via Punxsutawney, Du Bois, and intermediate stations):
Leave Butler, Pa. for West Winfield, Pa. (via Punxsutawney, Du Bois, and intermediate stations):

Leave Butler, Pa. for West Winfield, Pa. (via Punxsutawney, Du Bois, and intermediate stations):
Leave Butler, Pa. for West Winfield, Pa. (via Punxsutawney, Du Bois, and intermediate stations):

Leave Butler, Pa. for West Winfield, Pa. (via Punxsutawney, Du Bois, and intermediate stations):
Leave Butler, Pa. for West Winfield, Pa. (via Punxsutawney, Du Bois, and intermediate stations):

Leave Butler, Pa. for West Winfield, Pa. (via Punxsutawney, Du Bois, and intermediate stations):
Leave Butler, Pa. for West Winfield, Pa. (via Punxsutawney, Du Bois, and intermediate stations):

Leave Butler, Pa. for West Winfield, Pa. (via Punxsutawney, Du Bois, and intermediate stations):
Leave Butler, Pa. for West Winfield, Pa. (via Punxsutawney, Du Bois, and intermediate stations):

Leave Butler, Pa. for West Winfield, Pa. (via Punxsutawney, Du Bois, and intermediate stations):
Leave Butler, Pa. for West Winfield, Pa. (via Punxsutawney, Du Bois, and intermediate stations):

Leave Butler, Pa. for West Winfield, Pa. (via Punxsutawney, Du Bois, and intermediate stations):
Leave Butler, Pa. for West Winfield, Pa. (via Punxsutawney, Du Bois, and intermediate stations):

Leave Butler, Pa. for West Winfield, Pa. (via Punxsutawney, Du Bois, and intermediate stations):
Leave Butler, Pa. for West Winfield, Pa. (via Punxsutawney, Du Bois, and intermediate stations):

Leave Butler, Pa. for West Winfield, Pa. (via Punxsutawney, Du Bois, and intermediate stations):
Leave Butler, Pa. for West Winfield, Pa. (via Punxsutawney, Du Bois, and intermediate stations):

Leave Butler, Pa. for West Winfield, Pa. (via Punxsutawney, Du Bois, and intermediate stations):
Leave Butler, Pa. for West Winfield, Pa. (via Punxsutawney, Du Bois, and intermediate stations):

Leave Butler, Pa. for West Winfield, Pa. (via Punxsutawney, Du Bois, and intermediate stations):
Leave Butler, Pa. for West Winfield, Pa. (via Punxsutawney, Du Bois, and intermediate stations):

Leave Butler, Pa. for West Winfield, Pa. (via Punxsutawney, Du Bois, and intermediate stations):
Leave Butler, Pa. for West Winfield, Pa. (via Punxsutawney, Du Bois, and intermediate stations):

Leave Butler, Pa. for West Winfield, Pa. (via Punxsutawney, Du Bois, and intermediate stations):
Leave Butler, Pa. for West Winfield, Pa. (via Punxsutawney, Du Bois, and intermediate stations):

Leave Butler, Pa. for West Winfield, Pa. (via Punxsutawney, Du Bois, and intermediate stations):
Leave Butler, Pa. for West Winfield, Pa. (via Punxsutawney, Du Bois, and intermediate stations):

Leave Butler, Pa. for West Winfield, Pa. (via Punxsutawney, Du Bois, and intermediate stations):
Leave Butler, Pa. for West Winfield, Pa. (via Punxsutawney, Du Bois, and intermediate stations):

Leave Butler, Pa. for West Winfield, Pa. (via Punxsutawney, Du Bois, and intermediate stations):
Leave Butler, Pa. for West Winfield, Pa. (via Punxsutawney, Du Bois, and intermediate stations):