

The Cleveland National debt was increased during the month of November \$5,321,472.

It is believed that Pittsburg's chances are good for the securing of the National Republican Convention next year.

Burgess Fitzsimmons and Corbett, can't find a place at which to fight. The authorities everywhere prevent them from fighting.

The San Francisco, California, girl out-rigger and murderer, Theodore Durrant, was found guilty of the murder of Blanche Lamont last Friday.

Last Thursday morning, October 31, an earthquake was felt from the Canada lake to the Gulf of Mexico.

At the same hour people in Michigan towns were greatly frightened by the quake. It was felt in Canada, in Tennessee, in Georgia, in Louisiana, and the earthquake register in the weather bureau at Washington, indicated the shock at 6:03 1/2 on Thursday morning.

LIST OF JURORS

- Edward Lindsay, Milford; James M. Tenney, Fayette; William A. Milken, Tuscarora; William V. Shirkin, Fayette; William Lauer, Lack; David Nace, Monroe; William J. Jackson, Millintown; William Stine, Fermanagh; Henry L. Bosler, Fayette; John H. Mover, Monroe; George Heckman, Fayette; Howard D. Funk, Patterson; Samuel Warner, Fayette; J. H. Gilliland, Tuscarora; A. F. Herndon, Turbett; Jones Leister, Fayette; Nor M. VanOrmer, Fayette; Jesse M. Crawford, Milford; Charles D. Frankhouser, Beale; Andrew Bossinger, Milford; T. G. Dressler, Monroe; Absalom Wetzler, Thompson; James Neimond, Monroe.

From the Bloomfield Advocate and Press.—On oath of Wm. M. Minick, Esq., of Newport, John H. Bowers of East Pennsboro, Cumberland county, has been arrested on the charge of false pretense, said Bowers having obtained, so the prosecutor alleges, \$56.30 from said Minick on the representation that he owned real estate worth \$1,500, comparatively unencumbered.

A REPUBLICAN SWEEP

Maryland Goes Republican by Twenty Thousand.

NEW YORK AND NEW JERSEY

Also Add Their Votes to the Republican Column.

BUSHNELL'S BIG VOTE IN OHIO.

McKinley's State Gives the Republican Candidate a Plurality of Ninety Thousand Votes—Tammany Wins the Municipal Fight in New York City—Amos Cummings Wins His Fight for a Seat in Congress—A Republican Plurality in Pennsylvania Over 150,000.

PHILADELPHIA, Nov. 6.—Returns received up to midnight indicate that Benjamin J. Haywood, rep., has been elected state treasurer by over 150,000 plurality, a Republican vote since 1883, which was also an year of about 15,000. This state also elected seven judges of the new superior court. Of these the six Republicans and one Democrat are elected, as follows: James A. Beaver, Edward N. Willard, John J. Wiekham, Charles E. Rice, Howard J. Foster and George B. Okey. The seventh man on the ticket is in doubt. The Democrat elected is John M. W. McLaughlin.

PHILADELPHIA, Nov. 6.—Returns received up to midnight indicate that Benjamin J. Haywood, rep., has been elected state treasurer by over 150,000 plurality, a Republican vote since 1883, which was also an year of about 15,000.

PHILADELPHIA, Nov. 6.—Returns received up to midnight indicate that Benjamin J. Haywood, rep., has been elected state treasurer by over 150,000 plurality, a Republican vote since 1883, which was also an year of about 15,000.

PHILADELPHIA, Nov. 6.—Returns received up to midnight indicate that Benjamin J. Haywood, rep., has been elected state treasurer by over 150,000 plurality, a Republican vote since 1883, which was also an year of about 15,000.

PHILADELPHIA, Nov. 6.—Returns received up to midnight indicate that Benjamin J. Haywood, rep., has been elected state treasurer by over 150,000 plurality, a Republican vote since 1883, which was also an year of about 15,000.

PHILADELPHIA, Nov. 6.—Returns received up to midnight indicate that Benjamin J. Haywood, rep., has been elected state treasurer by over 150,000 plurality, a Republican vote since 1883, which was also an year of about 15,000.

PHILADELPHIA, Nov. 6.—Returns received up to midnight indicate that Benjamin J. Haywood, rep., has been elected state treasurer by over 150,000 plurality, a Republican vote since 1883, which was also an year of about 15,000.

PHILADELPHIA, Nov. 6.—Returns received up to midnight indicate that Benjamin J. Haywood, rep., has been elected state treasurer by over 150,000 plurality, a Republican vote since 1883, which was also an year of about 15,000.

MARYLAND REPUBLICAN

The State Gives Lowndes a Majority of Twenty Thousand.

NEW YORK ALSO GOES REPUBLICAN

The Majority in the Empire State Fully Fifty Thousand—Griggs Elected in New Jersey by a Majority of Over Seventeen Thousand.

BALTIMORE, Nov. 6.—Returns from both the city and state are slow in coming to hand, and up to midnight the exact figures of the vote are not yet in. The city returns have been completely counted.

There are enough returns, however, to indicate that the Republican ticket is underwritten by majorities ranging from 6,000 upward. There seems to be no room for doubt that the Republicans have elected their entire state and city tickets, and that they will have a working majority in the next legislature, which will choose a successor to United States Senator Gibson.

Even Howard county, the home of Senator Gorman, has apparently reversed its allegiance from the Democrats to the Republicans. The vote here is 2,500 for Lowndes, rep., for governor a majority of at least ten thousand votes.

NEW YORK, Nov. 6.—New York state has been carried by the Republicans by pluralities ranging from 48,000 to 55,000, compared with a plurality of 24,844 for the Democrats in 1892. More than one-half of the election districts outside of the cities of New York and Brooklyn, or "above the Harlem," show a Republican gain of 25,000 or more over the vote of two years ago.

NEW YORK, Nov. 6.—New York state has been carried by the Republicans by pluralities ranging from 48,000 to 55,000, compared with a plurality of 24,844 for the Democrats in 1892.

NEW YORK, Nov. 6.—New York state has been carried by the Republicans by pluralities ranging from 48,000 to 55,000, compared with a plurality of 24,844 for the Democrats in 1892.

NEW YORK, Nov. 6.—New York state has been carried by the Republicans by pluralities ranging from 48,000 to 55,000, compared with a plurality of 24,844 for the Democrats in 1892.

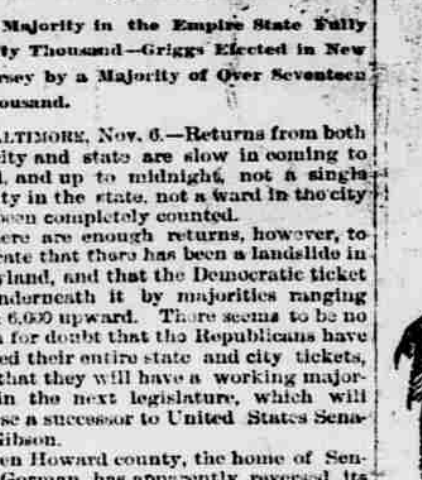
NEW YORK, Nov. 6.—New York state has been carried by the Republicans by pluralities ranging from 48,000 to 55,000, compared with a plurality of 24,844 for the Democrats in 1892.

NEW YORK, Nov. 6.—New York state has been carried by the Republicans by pluralities ranging from 48,000 to 55,000, compared with a plurality of 24,844 for the Democrats in 1892.

DUCHES OF MARLBOROUGH

Marriage of Miss Charlotte Vanderbilt and Her Third Lover.

NEW YORK, Nov. 5.—At high noon today Mrs. Consuelo Vanderbilt, daughter of Mr. and Mrs. William K. Vanderbilt, was married to the Duke of Marlborough. The ceremony took place at St. Thomas' Episcopal church, and was presided over by Bishop Littlejohn, who characterized the bride as "the fairest and noblest of her kind."



DUKE OF MARLBOROUGH

and confirmed the bride, while Rev. Henry Potter, bishop of New York, pronounced the benediction. The streets in the immediate vicinity of the church were crowded with sightseers, but the police arrangements were so perfect that the guests were in no way inconvenienced.

The bridegroom is the Duke of Marlborough, the son of the Duke of Devonshire. He is a member of the House of Lords, and was formerly a member of the House of Commons.

The bride is the daughter of Mr. and Mrs. William K. Vanderbilt. She is a member of the House of Representatives, and was formerly a member of the House of Commons.

The Duke of Marlborough is a member of the House of Lords, and was formerly a member of the House of Commons. He is the son of the Duke of Devonshire.

The Duke of Marlborough is a member of the House of Lords, and was formerly a member of the House of Commons. He is the son of the Duke of Devonshire.

The Duke of Marlborough is a member of the House of Lords, and was formerly a member of the House of Commons. He is the son of the Duke of Devonshire.

The Duke of Marlborough is a member of the House of Lords, and was formerly a member of the House of Commons. He is the son of the Duke of Devonshire.

The Duke of Marlborough is a member of the House of Lords, and was formerly a member of the House of Commons. He is the son of the Duke of Devonshire.

Tuscarora Valley Railroad.

SCHEDULE IN EFFECT MONDAY SEPTEMBER 30, 1895.

Table with columns for STATIONS, DAILY, EXCEPT SUNDAY, and No. 1 No. 2. Stations include Blair's Mills, Waterloo, Leonard's Grove, Ross Farm, Perlick, East Waterford, Heckman, Honey Grove, Fort Bigham, Werble, Pleasant View, Seven Pines, Spruce Hill, Graham's, Freedom, Turbett, Old Port, and Port Royal.

WESTWARD.

Table with columns for STATIONS, DAILY, EXCEPT SUNDAY, and No. 3 No. 4. Stations include Port Royal, Old Port, Turbett, Freedom, Graham's, Spruce Hill, Seven Pines, Pleasant View, Werble, Honey Grove, Fort Bigham, Heckman, East Waterford, Perlick, Ross Farm, Leonard's Grove, Waterloo, and Blair's Mills.

Trains Nos. 1 and 2 connect at Port Royal with Way Passenger and Sea-board Express on P. E. R., and Nos. 3 and 4 with Mail east.

Trains Nos. 2 and 3 connect with Stage Line at Blair's Mills for Concord, Doyleburg and Dry Run.

J. C. MOORHEAD, Superintendent. T. S. MOORHEAD, President.

LEGAL. ADMINISTRATIVE NOTICE. In state of BENJAMIN WALLACE.

THE STUDENTS AT MIFFLIN Academy DO MORE WORK THAN ANY OTHER School IN THE STATE.

IT COSTS ONLY \$100 FOR BOARDING, TUITION AND FURNISHED ROOM FOR 40 WEEKS.

CLASSICAL ENGLISH AND NORMAL. J. HARRY DYSINGER, A. B., PRINCIPAL, Millintown, Penna.

BRIEF ITEMS OF NEWS. Eugene Field, the Chicago poet, was found dead in his city, a victim of heart disease.

DEMOGRAPHS CARRY KENTUCKY. But the Majority for Their Candidate is Very Small.

LOUISVILLE, Nov. 6.—On both sides the leaders are claiming the victory in this city, the Democrats by a small majority and the Republicans by a majority ranging up to 8,000.

PENNSYLVANIA COLLEGE.

GETTYSBURG, PA.

FOUNDED IN 1832. Large Faculty. Two full courses of study—Classical and Scientific. Special courses in Agriculture, Veterinary, Law, and Music.

Faculty of the College of Agriculture, Veterinary, Law, and Music. The college is located in Gettysburg, Pennsylvania.

Trains Nos. 1 and 2 connect at Port Royal with Way Passenger and Sea-board Express on P. E. R., and Nos. 3 and 4 with Mail east.

Trains Nos. 2 and 3 connect with Stage Line at Blair's Mills for Concord, Doyleburg and Dry Run.

J. C. MOORHEAD, Superintendent. T. S. MOORHEAD, President.

LEGAL. ADMINISTRATIVE NOTICE. In state of BENJAMIN WALLACE.

THE STUDENTS AT MIFFLIN Academy DO MORE WORK THAN ANY OTHER School IN THE STATE.

IT COSTS ONLY \$100 FOR BOARDING, TUITION AND FURNISHED ROOM FOR 40 WEEKS.

CLASSICAL ENGLISH AND NORMAL. J. HARRY DYSINGER, A. B., PRINCIPAL, Millintown, Penna.

BRIEF ITEMS OF NEWS. Eugene Field, the Chicago poet, was found dead in his city, a victim of heart disease.

DEMOGRAPHS CARRY KENTUCKY. But the Majority for Their Candidate is Very Small.

LOUISVILLE, Nov. 6.—On both sides the leaders are claiming the victory in this city, the Democrats by a small majority and the Republicans by a majority ranging up to 8,000.

LOUISVILLE, Nov. 6.—On both sides the leaders are claiming the victory in this city, the Democrats by a small majority and the Republicans by a majority ranging up to 8,000.

LOUISVILLE, Nov. 6.—On both sides the leaders are claiming the victory in this city, the Democrats by a small majority and the Republicans by a majority ranging up to 8,000.

LOUISVILLE, Nov. 6.—On both sides the leaders are claiming the victory in this city, the Democrats by a small majority and the Republicans by a majority ranging up to 8,000.

PENNSYLVANIA RAILROAD.

On and after Sunday, May 20, 1895, trains will run as follows:

WESTWARD.

Table with columns for STATIONS, WESTWARD, and EASTWARD. Stations include Harrisburg, Pottsville, and Philadelphia.

Wool Bought.

H. L. COOPER, No. 8 North Front Street, Philadelphia. Correspondence Solicited. Long Distance Telephone 519.

RAILROAD TIME TABLE. PERRY COUNTY RAILROAD. The following schedule went into effect Nov. 19, 1895, and the trains will be run as follows:

Trains Nos. 1 and 2 connect at Port Royal with Way Passenger and Sea-board Express on P. E. R., and Nos. 3 and 4 with Mail east.

Trains Nos. 2 and 3 connect with Stage Line at Blair's Mills for Concord, Doyleburg and Dry Run.

J. C. MOORHEAD, Superintendent. T. S. MOORHEAD, President.

LEGAL. ADMINISTRATIVE NOTICE. In state of BENJAMIN WALLACE.

THE STUDENTS AT MIFFLIN Academy DO MORE WORK THAN ANY OTHER School IN THE STATE.

IT COSTS ONLY \$100 FOR BOARDING, TUITION AND FURNISHED ROOM FOR 40 WEEKS.

CLASSICAL ENGLISH AND NORMAL. J. HARRY DYSINGER, A. B., PRINCIPAL, Millintown, Penna.

BRIEF ITEMS OF NEWS. Eugene Field, the Chicago poet, was found dead in his city, a victim of heart disease.

DEMOGRAPHS CARRY KENTUCKY. But the Majority for Their Candidate is Very Small.

LOUISVILLE, Nov. 6.—On both sides the leaders are claiming the victory in this city, the Democrats by a small majority and the Republicans by a majority ranging up to 8,000.

PENNSYLVANIA RAILROAD.

On and after Sunday, May 20, 1895, trains will run as follows:

WESTWARD.

Table with columns for STATIONS, WESTWARD, and EASTWARD. Stations include Harrisburg, Pottsville, and Philadelphia.

Wool Bought.

H. L. COOPER, No. 8 North Front Street, Philadelphia. Correspondence Solicited. Long Distance Telephone 519.

RAILROAD TIME TABLE. PERRY COUNTY RAILROAD. The following schedule went into effect Nov. 19, 1895, and the trains will be run as follows:

Trains Nos. 1 and 2 connect at Port Royal with Way Passenger and Sea-board Express on P. E. R., and Nos. 3 and 4 with Mail east.

Trains Nos. 2 and 3 connect with Stage Line at Blair's Mills for Concord, Doyleburg and Dry Run.

J. C. MOORHEAD, Superintendent. T. S. MOORHEAD, President.

LEGAL. ADMINISTRATIVE NOTICE. In state of BENJAMIN WALLACE.

THE STUDENTS AT MIFFLIN Academy DO MORE WORK THAN ANY OTHER School IN THE STATE.

IT COSTS ONLY \$100 FOR BOARDING, TUITION AND FURNISHED ROOM FOR 40 WEEKS.

CLASSICAL ENGLISH AND NORMAL. J. HARRY DYSINGER, A. B., PRINCIPAL, Millintown, Penna.

BRIEF ITEMS OF NEWS. Eugene Field, the Chicago poet, was found dead in his city, a victim of heart disease.

DEMOGRAPHS CARRY KENTUCKY. But the Majority for Their Candidate is Very Small.

LOUISVILLE, Nov. 6.—On both sides the leaders are claiming the victory in this city, the Democrats by a small majority and the Republicans by a majority ranging up to 8,000.