

Danville Intelligencer

Established in 1828. D. AUST LUCE Editor and Proprietor. DANVILLE, PA., JULY 28, '05.

Democratic State Ticket. FOR STATE TREASURER, WILLIAM H. BERRY, of Delaware county.

Democratic County Ticket. FOR ASSOCIATE JUDGE, FRANK G. BLEE.

THE Democratic State Convention will convene at Harrisburg on August 16th, to name a candidate for Supreme Judge.

ARE YOU ONE OF THEM? WERE we to enter a dry goods notion or general store and ask the proprietor to give us gratuitously articles stocked upon the counters or shelves, because we were both of one political party, we would subject ourselves to ridicule.

Of course newspaper men are more mild and gentle than others of the business world, and such actions are met with kindly greeting and many times conceded to. We have our advertising space for sale just as the store keepers have their merchandise, but many—oh, so many times, petty politicians would impose upon their best friend by asking for some of that space.

Even after a political paper has cared for and advertised one of its party to success, the effort goes unappreciated and what printing the politician has invariably is asked to be done at starvation wages, or a rake-off is expected. Just here it may be asked why it is that the Intelligencer, the leading and best paper, never has any of certain Democratic politicians' patronage. You can surmise.

What ungrateful men are politicians, as a rule, if it were, as in years past and gone, that the office sought the man, it would be vastly different from the present, when most any respectable corrupter is supported by the people.

IS IT REALLY FAIR? LAST week one day five poor fishermen, of McKees Half Falls, Snyder county, were taken by a fish warden and heavily fined for catching fish in the wide Susquehanna. The means they employed were claimed to be illegal, but they were only capturing the fish to appease the appetites of themselves and their hungry families, which, in all probability, would have soon succumbed and died from a more condemnable cause, considered all right by the government.

Coal barons and other rich corporation leaders are granted the privilege to pollute and deplete our State streams of their fishes, but when a poor fisherman goes forth to catch a mess of fish for his family with the legal fishing tackle, he is seized, and if unable to pay the heavy fine, is caused to suffer the ignominy and his family to bow their heads in shame.

If the Fish Department was as exact with the avariciously rich corporations, which are allowed to freely and fully poison even such a large body of water as the Susquehanna to such an extent as to finally kill a 1 or 2 fish, as it is with the poor fisherman, the violation of the fish laws would be a thing of the past.

LET IT BE: "WELL DONE" W E pity old Methuselah with his burden of nine hundred years. Just imagine the old ovey, without a living parent, brother, sister, wife or child. Even his last baby dead and buried several hundred years. Not a single soul on earth that he consorted, loved and lived with in his youth. An old blasted tree without leaf, branch or living root. Toothless, dimmed in vision, hard of hearing, stomach paralyzed and no longer relishing the good things of life, strength exhausted, shaky and trembling. All and everybody off the earth that he once knew and loved, a poor old miserable wreck with nothing but the breath of life, bare existence to live for. A shadow of the past!

Some students of longevity tell us if a man lived physiologically he could attain to one hundred years, or perhaps one hundred and fifty years. We question very old age being desirable. The hopes, pleasures and bright anticipations of youth have passed. His friends have nearly all gone before. The old associations all gone. He is lonesome, homesick, tired and desires to lie down and rest—the long sleep of death. The bright anticipations of youth, and even middle age have all fled, and he sees little life that is longer desirable. He wants to die; close up earthly existence, that has no pleasure for him.

The better question is not how long you can live upon the earth, but how useful. What can you do to improve the earth and the people, make life pleasant, and the world better for your existence, and when you die have it said: "Well done! Thou hast done thy best. The good thou hast done will live after thee."

There are a few of our Democratic leg-pulling contemporaries already diligently searching the field for the lower member of our friend, the Hon. J. Henry Cochran, whom they have been endeavoring to place before the public as candidate for reelection to State Senator in 1906, one of the worst going so far as to carry his cut and card. Their object is very discernible, but Mr. Cochran is too shrewd to become their prey. If he desires reelection, it is his, and what these petty, little papers would have to say to the contrary would do him no harm, for his ability and integrity are so well known through his very excellent service that the people are with him if he continues with the people.

The city cousins are coming—some of them are here. How they do like Cousin John and Cousin Jerry in the summer. When they leave, the first week in September they say: "Well, good by, Cousin John. I'll be up again next summer. I've had a splendid time, I assure you. Next time I come I'll bring a friend or two along. Well, here comes my train. So long to you, old boy." As the train platform is reached and the cars begin to move, an afterthought invitation is shouted back: "Oh, say, run down and see me some time next winter, for a day or two."

BOROUGH COUNCIL was slow to act upon the momentous question at Friday evening's session. All dogs should be muzzled, penned up or tied during the hot weather, and if not owned or tax on same refused to be paid should be caught and disposed of in a manner that would allay the danger and nuisance they have become.

An interesting proposition. In another column of this paper appears an advertisement directed to boys and girls who are ambitious to make their spare moments productive through clean, pleasant and remunerative enterprise. Adams' Magazine is a 32-page illustrated monthly magazine devoted to the home. It contains departments on fashions, embroidery, household hints, table dainties, flowers and plants, garden and farm. Beginning in the July number will be a serial story by one of the most noted and famous writers of romantic fiction in the world. The subscription price of the magazine is 10 cents a year, half of which is offered to the boys and girls who become subscribers. The publishers have set aside \$65,000 in order to introduce the magazine in every locality in the United States, and it is by virtue of this appropriation that this liberal offer is made to young America.

Trolley Injunction Proceeding. The hearing in the injunction proceedings against the Danville & Sandy Street Railway, in which M. F. Galick is plaintiff, was held at 10 o'clock Monday. The case came before Judge Savidge at 11 o'clock in the morning. The testimony submitted by both sides was lengthy and it was 5:30 p. m. when the evidence was all in. The argument will be heard before Judge Savidge next Monday morning.

"Jeremiah Grimes," Esq. Had No Intention of Going to the Sea Shore—Assures John Offa That He is a Democrat—Scores a Few Points. LIBERTY TOWNSHIP, July 24, 1905. DEER EDITOR:

That dear John Offa from Strawberry Ridge thinks I was to the Sea Shore last week, but Jerry is to old a bird to be slain so far away. If I was about 75 yrs younger I might take the old women down for a week or two. You can bet on Jerry being a Dimmyer at every time, Jon. Sum da I will hook up the ole sor mare and cum up to see you.

That fellar green he do certainly lay low. Gess he got all them afterdewer he wanted. I got had kick like a little brindle steer, but he keep quiet. I heard them say that he expects to have a resolution past that he ever the dealer in adulterers in this county. That dear Farmer Havy he make hisself sears to. He got sortin'ly put Eli Perkins out of biz in short order.

But Bets, she lets her fly. You can't shet her down. That's the way she allers waz. I new she'd mak a howl at bein exposed. She's bin passin' in herself off for a fine ledly when shez only an ordinary scrub. Shez takes on abt that man green. Gess shez sweat on him, as is allers the way when a veng woman nars an ole man. Did I ever tel you how she got ole Cy? Bets used to fix herself up and cox about the yong doolickin' editors, but she could not herself in, an theyd soon flude out wit a bad tong she had, and fit shy on her, befores they did trust that redd hair.

You Have Often Seen Women with marked bluness or paleness of face, vitiated appetites and a craving for unwholesome food. These are signs of disordered liver, and the trouble must be corrected or worse results are sure to follow. Dr. Kennedy's Favorite Remedy dispels liver disease. Husbands and fathers cannot afford to treat this matter lightly.

The Lutheran Reunion. The Susquehanna Lutheran reunion will be held this year at Edgewood Park. The date is Thursday, August 24th. Rev. J. M. Reimsnyder, D. D., of Milton, is president of the Susquehanna Lutheran reunion.

W. M. SEIDEL, 1344 Mill Street. A fine catch of bass was exhibited in this city Saturday by George and Gearhart Oberdorf. The young men were fishing Saturday morning between the creek's mouth and Red Point and caught 12 fish specimens. Seven of the twelve fish landed by the waters measure between 12 and 15 inches and the other five averaged over 9 inches in length.

DR. KENNEDY'S FAVORITE REMEDY. Pleasant to Take, Powerful in Cure, and Welcome in Every Home. KIDNEY AND LIVER CURE.

Dr. David Kennedy's Favorite Remedy is adapted to all ages and both sexes, affording permanent relief in all cases caused by impurity of the blood, such as Kidney, Bladder and Liver Complaints, cured Constipation and Weakness peculiar to women. It is successful in cases where all other remedies have failed. No sufferer should despair, as long as this remedy is in reach. It has an unbroken record of success for over 30 years, and has won hosts of warm friends. Are you suffering from any disease traceable to the cause mentioned? If so, Dr. Kennedy has placed his personal and professional reputation on the statement that Favorite Remedy will do you good. Send for a free trial bottle and booklet containing valuable medical advice on the treatment of various diseases. Write also for an "Easy Test" for finding out if you have kidney disease. Address Dr. David Kennedy's Sons, Randolph, N. Y. REMINDER: The full name is Dr. David Kennedy, all agents in the United States, Canada and foreign countries.

SEND US A COW. Steer, Bull or Horse Hide, Calf skin, Dog Hide, or any animal skin. But first get our Catalogue, giving prices, and our shipping and packing instructions, so as to avoid mistakes. We also buy raw furs and skins. THE CROSBY FUR COMPANY, 110 Hill Street, Rochester, N. Y.

QUEEN OF DIAMONDS. By MARGARET RICHARDS. Copyright, 1905, by E. M. Doane.

The usually cheery face of Mme. Fontaine, "palmist and card reader," was overcast. Even the invitingly clean little room where madame received the anxious seekers after wisdom shared in the pervading gloom. A crudely drawn board covered with cabalistic signs had become detached from the wall and lay unheeded in one corner; the cards by whose aid consulting events were evoked were pushed carelessly aside. It was evident that misfortune had fallen upon this faithful priestess of the future.

Nora McCabe had always been a wonder at "cutting the cards," and it was when Pat McCabe died an event which the cards had predicted, leaving her with five little children, that Mme. Fontaine had sprung into existence. Having an average amount of quick Irish wit and more than an average understanding of human nature, Nora had prospered and as Mme. Fontaine she, a stout, energetic and neat mistress in romantic and glowing generalities.

You Can Sell on Sunday. By an opinion handed down by Judge Porter in the superior court of Pennsylvania it is decided that the selling of cigars and soda water on Sundays is not a violation of the law. In handing down the opinion the court reversed Judge Johnson, of Delaware county, this state.

How Wines are Colored. "Most people think white grapes make white wine and dark grapes make red wine," said a visitor. "That is a popular error."

TREE PECULIARITIES. The eucalyptus tree dries up springs rapidly. The olive will live longer under water than any other tree. There are forests of leafless trees in some parts of Australia. A nutmeg tree of the largest size will produce no more than five pounds of nutmegs.

Back to Carlisle. Lieutenant Ismael of the Carlisle Indian School, arrested in Sanberry yesterday and took the runaway Indian, who was lodged in jail there, back to school. The lieutenant said that the boys in the school become restless now and then and skip, but they seldom do it a second time, as they are always captured and punished severely.

MISSOURI RIVER BOATS. Trips of the Old Side Wheelers in the Early Days. In the early days there was a regular line of packets between St. Louis and St. Joseph all side wheelers, and the average round trip occupied eight days. A boat left St. Louis every day for the Missouri river, and as there were fourteen boats in the line each boat made a round trip once every two weeks during the season. During the winter the boats ran between St. Louis and New Orleans.

formula, "an' there's a light woman, the queen of diamonds," she added, her eyes fastened on the cards. John Chetwood threw back his head and laughed delightedly. "I thought it was always a dark woman," he said. "She's tall almost as yerself," Nora went on, "an' it's like one of the satins she is, with her sweet face an' eyes as blue as the violets," she continued. The quick start of surprise John Chetwood gave did not escape madame's shrewd eyes, and she went on rapidly: "She loves ye—there's somethin' comin' between ye—but she loves ye. Never mind what's been, say I go to her; she's waitin' for ye. I see the waddin' card."

John Chetwood rose abruptly. "That's a great fortune. We'll have to look into that, Mr. Jimmy," he said, but his bright eyes were fixed on the cards on his face deepened as he ran lightly down the stairs.

The boats carried from 200 to 400 passengers on the trip up the river, counting the immigrants on the deck, but going back they only had a few passengers. The boats came from St. Louis to St. Joseph ranged from \$10 to \$15, which included meals and stowage. The boats were all supplied with fine cooks, and the passengers lived on the best that money could buy.

The average boat carried 500 to 600 tons of freight in addition to passengers. During low water freight that now costs 20 cents a hundred cost \$250 a hundred. The expense of a round trip from St. Louis to St. Joseph, including loading and unloading, was estimated at \$4,000, and the income from cost to \$7,000. Each boat carried a crew of from 80 to 100 men. The average value of the boats in the line was probably \$45,000 each.

Among the famous boats on the river at that time were the Kate Kinney, F. G. Ashby, Morning Star, John D. Perry, Stony City, Omaha, John and the James H. Lucas. The last named made the fastest run in the history of the river—50 hours and 22 minutes from St. Louis to St. Joseph.

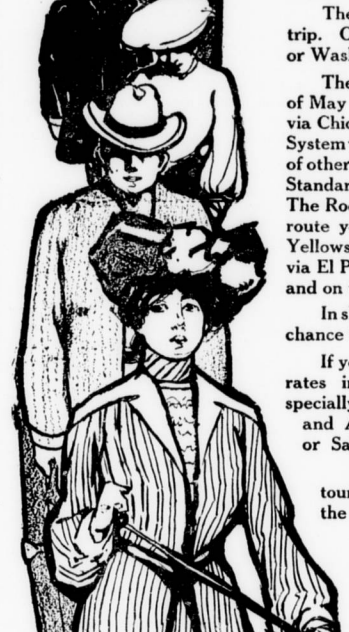
How Wines are Colored. "Most people think white grapes make white wine and dark grapes make red wine," said a visitor. "That is a popular error."

TREE PECULIARITIES. The eucalyptus tree dries up springs rapidly. The olive will live longer under water than any other tree. There are forests of leafless trees in some parts of Australia. A nutmeg tree of the largest size will produce no more than five pounds of nutmegs.

Back to Carlisle. Lieutenant Ismael of the Carlisle Indian School, arrested in Sanberry yesterday and took the runaway Indian, who was lodged in jail there, back to school. The lieutenant said that the boys in the school become restless now and then and skip, but they seldom do it a second time, as they are always captured and punished severely.

MISSOURI RIVER BOATS. Trips of the Old Side Wheelers in the Early Days. In the early days there was a regular line of packets between St. Louis and St. Joseph all side wheelers, and the average round trip occupied eight days. A boat left St. Louis every day for the Missouri river, and as there were fourteen boats in the line each boat made a round trip once every two weeks during the season. During the winter the boats ran between St. Louis and New Orleans.

TO THE PACIFIC COAST—to California, Oregon, Washington—round-trip, long transit and return limits, liberal stop-over privileges. The rate is practically on the basis of one fare for the round trip. Of course, if you wish to visit both California and Oregon or Washington, the cost is slightly more. These reduced rates are in effect on certain dates in months of May to October, inclusive. They apply from all Eastern points via Chicago, St. Louis or Memphis gateways. The Rock Island System will take you up in either Chicago or St. Louis, or at hundreds of other Middle West points and carry you to the Coast in through Standard or Tourist Sleepers with unexcelled Dining Car service. The Rock Island also affords a choice of routes: on the "Scenic" route you can stop off in Colorado—see Salt Lake City—visit Yellowstone National Park; on the "Southern" route you can go via El Paso, thru New Mexico, then "up coast" to San Francisco and on to Portland or Seattle if desired.



Send Colorado booklet and rates. Name: Address: Leave about: Destination: JOHN SEBASTIAN, Pass. Traf. Mgr., Rock Island System, CHICAGO.

To the Pacific Coast—to California, Oregon, Washington—round-trip, long transit and return limits, liberal stop-over privileges. The rate is practically on the basis of one fare for the round trip. Of course, if you wish to visit both California and Oregon or Washington, the cost is slightly more. These reduced rates are in effect on certain dates in months of May to October, inclusive. They apply from all Eastern points via Chicago, St. Louis or Memphis gateways. The Rock Island System will take you up in either Chicago or St. Louis, or at hundreds of other Middle West points and carry you to the Coast in through Standard or Tourist Sleepers with unexcelled Dining Car service. The Rock Island also affords a choice of routes: on the "Scenic" route you can stop off in Colorado—see Salt Lake City—visit Yellowstone National Park; on the "Southern" route you can go via El Paso, thru New Mexico, then "up coast" to San Francisco and on to Portland or Seattle if desired.

Send Colorado booklet and rates. Name: Address: Leave about: Destination: JOHN SEBASTIAN, Pass. Traf. Mgr., Rock Island System, CHICAGO.

FARMERS AND DAIRYMEN! ATTENTION! Orders will be taken for a guaranteed 43 per cent. Protein Brand of Cotton Seed Meal, delivered off the car at Pottsgrove, at a reduced price. Send inquiries and orders by mail to Pottsgrove. Persons having orders will be notified on arrival of the car. C. H. McMahan & Bros. Special Dairy Foods and Dairy Supplies, HAY AND FEED Pottsgrove, Northumberland Co., Pa.

A \$45 Machine for \$20 IF YOU NEED A SEWING MACHINE IT WILL BE WISE OF YOU TO CALL AT THE OFFICE OF THE INTELLIGENCER. WE CAN FURNISH YOU WITH ONE OF THE VERY LATEST STYLES AND MAKES, STRAIGHT FROM THE FACTORY OF THE "NEW HOME" PEOPLE. The Woodwork is of Fine Quartered Oak Finish. Drop Head. Bail Bearing. Five Drawers. Will Sell at Wholesale Prices. Drop us a Postal Card.

LADIES DR. LA FRANCO'S COMPOUND Safe, Quick, Reliable Regulator. Dr. La Franco, Philadelphia, Pa.

YOUR LIFE Current. The power that gives you life and motion is the nerve force, or nerve fluid, located in the nerve cells of the brain, and sent out through the nerves to the various organs. If you are tired, nervous, irritable, cannot sleep; have headache, feel stuffy, dull and melancholy, or have neuralgia, rheumatism, backache, dyspepsia, stomach trouble, or the kidneys and liver are inactive, your life-current is weak.

THE NEW HOME SEWING MACHINE CO. 3 PER CENT. INTEREST PER ANNUM FOR THEM. The First National Bank OF DANVILLE, PA. Resources over \$1,200,000.00 Miles Medical Co., Elkhart, Ind.

PENNSYLVANIA RAILROAD. The Standard Railway of This Continent. PROTECTED THROUGHOUT BY THE Interlocking Switch & Block Signal System. Schedule in Effect Nov. 29, 1903.

STATIONS A.M. P.M. P.M. P.M. Williamsport, Pa. 7:30 11:00 1:00 4:30. Harrisburg, Pa. 8:30 12:00 2:00 5:30. York, Pa. 9:30 1:00 3:00 6:30. Pottsgrove, Pa. 10:30 2:00 4:00 7:30. Gettysburg, Pa. 11:30 3:00 5:00 8:30. Carlisle, Pa. 12:30 4:00 6:00 9:30. Altoona, Pa. 1:30 5:00 7:00 10:30. Scranton, Pa. 2:30 6:00 8:00 11:30. Binghamton, Pa. 3:30 7:00 9:00 12:30. Elmira, Pa. 4:30 8:00 10:00 1:30. Corning, Pa. 5:30 9:00 11:00 2:30. Plattsburgh, Pa. 6:30 10:00 12:00 3:30. Albany, Pa. 7:30 11:00 1:00 4:30. New York, Pa. 8:30 12:00 2:00 5:30.

STATIONS A.M. P.M. P.M. P.M. Williamsport, Pa. 7:30 11:00 1:00 4:30. Harrisburg, Pa. 8:30 12:00 2:00 5:30. York, Pa. 9:30 1:00 3:00 6:30. Pottsgrove, Pa. 10:30 2:00 4:00 7:30. Gettysburg, Pa. 11:30 3:00 5:00 8:30. Carlisle, Pa. 12:30 4:00 6:00 9:30. Altoona, Pa. 1:30 5:00 7:00 10:30. Scranton, Pa. 2:30 6:00 8:00 11:30. Binghamton, Pa. 3:30 7:00 9:00 12:30. Elmira, Pa. 4:30 8:00 10:00 1:30. Corning, Pa. 5:30 9:00 11:00 2:30. Plattsburgh, Pa. 6:30 10:00 12:00 3:30. Albany, Pa. 7:30 11:00 1:00 4:30. New York, Pa. 8:30 12:00 2:00 5:30.

NOT IN ANY TRUST. Many newspapers have lately given currency to reports by irresponsible parties to the effect that the New Home Sewing Machine Co. had entered a trust or combination; we wish to assure the public that there is no truth in such reports. We have never entered into any such combination or trust, and our sewing machines have been in the hands of our customers for over a century, and have established a reputation for ourselves and our machines that is the envy of all others. Our "New Home" machine has never been revealed as a "trust" machine. It stands at the head of all other sewing machines, and stands on its own merits. The "New Home" is the only really HIGH GRADE Sewing Machine on the market.

THE NEW HOME SEWING MACHINE CO. ORANGE, MASS. New York, Chicago, Ill., St. Louis, Mo., Atlanta, Ga., Dallas, Tex., San Francisco, Cal.