

Almanac for 1853.

Table with columns for months and days, likely a calendar or almanac.

Advertisement for 'The Complete Improved Cooking Stoves' by G. W. Schaffler's Wholesale and Retail Drug.

Casualty at Niagara Falls.

As our readers are aware, one of the most soul-thrilling casualties, that has ever occurred at Niagara, was recorded under our telegraphic head yesterday morning.

Insurance against Lightning.

TO OWNERS OF PROPERTY. I would ask a careful reading and consideration of the following facts by every owner of property.

\$500 CHALLENGE.

WHATSOEVER concerns the health and happiness of a people, is at all times of the most valuable importance. I take it for granted that every person will do all in their power to save the lives of their children.

THE TAPE WORM!

This is the most difficult worm to destroy of that infest the human system. It grows to an almost incredible length, and is situated in the bowels and stomach.

TO FEMALES.

You will find these Pills an invaluable medicine in many complaints to which you are subject. In obstinate cases, they have been known to effect a permanent cure.

HOLLOWAY'S OINTMENT.

A MOST MIRACULOUS CURE OF BAD LEGS, AFTER 4 YEARS SUFFERING. I have the pleasure to inform you that I have been cured of my bad leg.

ALTOONA is a settlement made by the Pennsylvania Central Railroad Company in Logan Valley a few miles west from Hollidaysburg.

The increase in the value of property in consequence of the Central Workshops of the Company at Altoona, is as follows: Three years ago the property on which it is located, was valued at \$14,000.

DESTRUCTIVE EARTHQUAKE IN PERSIA.

In the foreign news by the Atlantic, it is stated that on the 1st of May the City of Shiraz, in Persia, was destroyed with twelve thousand of its inhabitants.

Improvement in Lime Burning.

There is a lime kiln in operation in Lehigh county of novel construction, which possesses such decided advantages over every other kind of a kiln.

WHAT IS YOUR REMEDY?

I have this day carefully inspected a conductor of lightning rods, and I am sorry to find that the only one in use is the old-fashioned iron rod.

THE TUBE WORM!

This is the most difficult worm to destroy of that infest the human system. It grows to an almost incredible length, and is situated in the bowels and stomach.

THE TUBE WORM!

This is the most difficult worm to destroy of that infest the human system. It grows to an almost incredible length, and is situated in the bowels and stomach.

Improvement in Lime Burning.

There is a lime kiln in operation in Lehigh county of novel construction, which possesses such decided advantages over every other kind of a kiln.

WHAT IS YOUR REMEDY?

I have this day carefully inspected a conductor of lightning rods, and I am sorry to find that the only one in use is the old-fashioned iron rod.

THE TUBE WORM!

This is the most difficult worm to destroy of that infest the human system. It grows to an almost incredible length, and is situated in the bowels and stomach.

THE TUBE WORM!

This is the most difficult worm to destroy of that infest the human system. It grows to an almost incredible length, and is situated in the bowels and stomach.

THE TUBE WORM!

This is the most difficult worm to destroy of that infest the human system. It grows to an almost incredible length, and is situated in the bowels and stomach.

THE TUBE WORM!

This is the most difficult worm to destroy of that infest the human system. It grows to an almost incredible length, and is situated in the bowels and stomach.

WHAT IS YOUR REMEDY?

I have this day carefully inspected a conductor of lightning rods, and I am sorry to find that the only one in use is the old-fashioned iron rod.

THE TUBE WORM!

This is the most difficult worm to destroy of that infest the human system. It grows to an almost incredible length, and is situated in the bowels and stomach.

THE TUBE WORM!

This is the most difficult worm to destroy of that infest the human system. It grows to an almost incredible length, and is situated in the bowels and stomach.

THE TUBE WORM!

This is the most difficult worm to destroy of that infest the human system. It grows to an almost incredible length, and is situated in the bowels and stomach.

THE TUBE WORM!

This is the most difficult worm to destroy of that infest the human system. It grows to an almost incredible length, and is situated in the bowels and stomach.

THE TUBE WORM!

This is the most difficult worm to destroy of that infest the human system. It grows to an almost incredible length, and is situated in the bowels and stomach.

Map of the State of California.

OREGON, UTAH, NEW MEXICO, and TEXAS, printed by S. Aug. & Mottel in 1846, and printed to correspond with the boundaries fixed by Congress in 1850.

THE NEW FOUNDRY.

IS now carried on as usual, at the upper end of Market street, where every description of CASTINGS is kept on hand or made to order—such as

CHRISTIAN'S GALVANIC CURE.

Are an Absolute and Positive Specific. The GALVANIC CURE consists in the fact that they arrest and cure disease by electrical action.

WHAT THINK YOU OF THIS?

From a letter of the most distinguished Physician in the world, who has used the Galvanic Cure for many years.

ANOTHER INSTANCE OF CANCER.

Dear Sir,—Being a physician in the vicinity of one of your Agents, I have been much gratified in the examination of your Galvanic Cures.

PARTICULAR CAUTION.

BEWARE of Counterfeit and Worthless Imitations. D. C. MOREHEAD, M. D. GENERAL AGENT FOR THE UNITED STATES.

Wanted at the Chronicle Office. ON accounts from one on to four years standing. CASH—also!



Illustration of a steam engine or boiler.

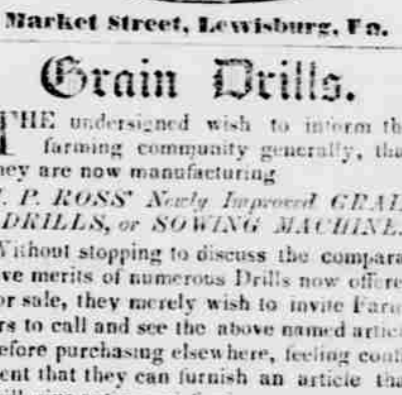


Illustration of a steam engine or boiler.

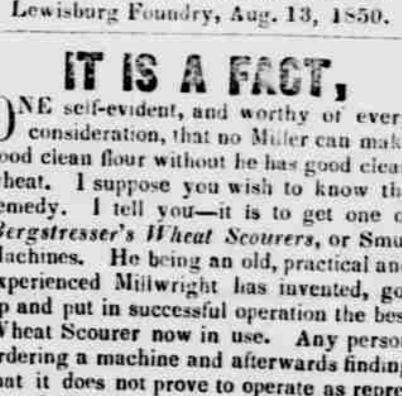


Illustration of a steam engine or boiler.

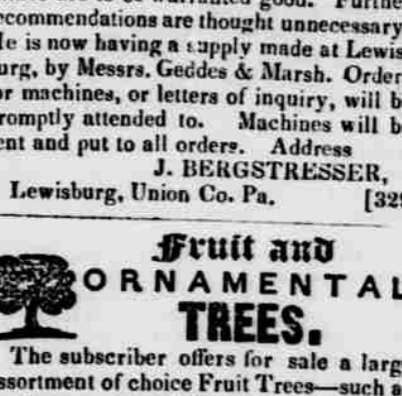


Illustration of a steam engine or boiler.

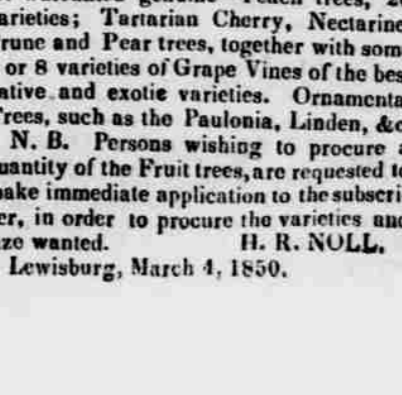


Illustration of a steam engine or boiler.

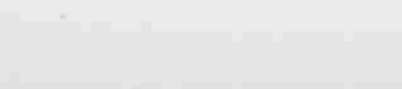


Illustration of a steam engine or boiler.

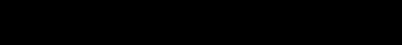


Illustration of a steam engine or boiler.