

# Paternoville campers return

By Mike Hrick  
COLLEGIAN STAFF WRITER

Jill Seifrit went through what she sees as a rite of passage at about 1 a.m. Thursday morning: ordering delivery from outside Beaver Stadium.

"Location? Beaver Stadium. No big deal," Seifrit (sophomore-political science) said.

Seifrit is one of many dedicated Paternoville campers returning to Gate A at Beaver Stadium for a front-row student section seat at this Saturday's game against Youngstown State.

Paternoville's newest experiment, a new method of group registration through the ANGEL course management system, worked without a glitch, Paternoville President Alex Cohen said.

Cohen (senior-marketing) described the campers for this weekend's game as some of his group's finest.

"These are the people that really have a passion for Paternoville

and Penn State football," Cohen (senior-marketing) said.

Despite waking up in her tent at 8 a.m. Thursday because of game clock testing from the stadium, Seifrit said she is still excited to camp out for every home game this year.

Groups of up to 10 registered tent spots through ANGEL, Penn State's primary site for supervising online components of classes.

Last year, the system consisted of on-site registration for spots, which caused problems with campers showing up at Gate A before the intended time of 12:01 a.m. on the Thursday before home games.

Cohen said about 25 groups signed up through ANGEL — bringing in about 150 people, less than last year's home opener against the University of Akron.

Paternoville Organizational Officer Stacy Bartholomew blamed this year's lower campout attendance on the reputation of Youngstown State.

"Once the big games come, it becomes really fun," Bartholomew (senior-animal sciences) said.

Cohen said the first group arrivals went better than in past years.

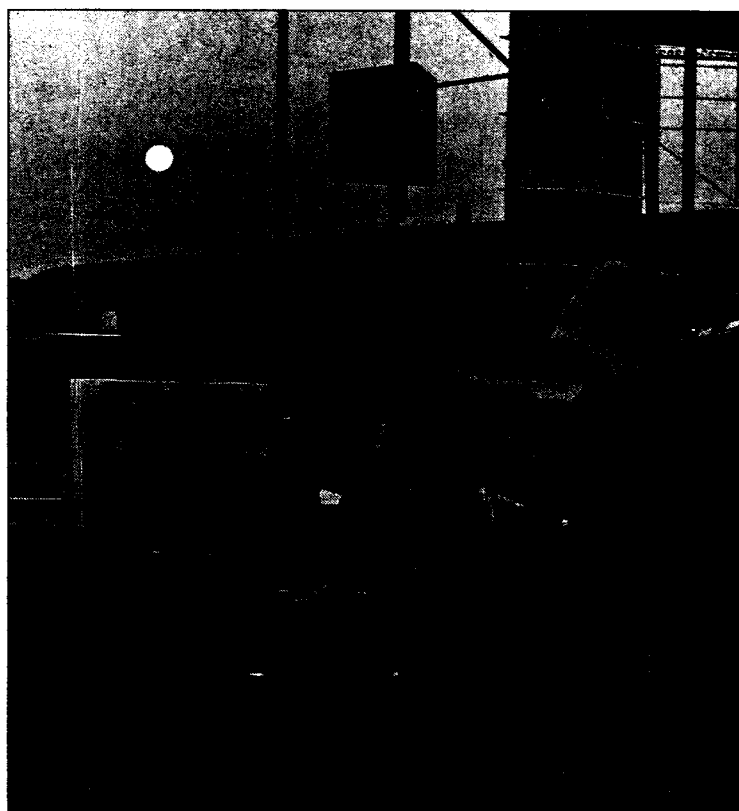
But for Cohen, this campout was personally bittersweet.

"I'm happy but kind of sad to be back. Last night was a melancholy moment because it's my last year with Paternoville," Cohen said.

Cohen said he is eager to see newly chosen freshman quarterback Robert Bolden start for Penn State.

Danielle Forwood (junior-veterinary and biomedical sciences), standing guard at her tent Thursday despite the afternoon heat, said she, too, is anxious to see how Bolden will perform.

The Nittany Lions will play the Youngstown State Penguins at noon on Saturday at Beaver Stadium.



Tom Ruane/Collegian

Students work on homework while at Paternoville last fall. About 25 groups registered on ANGEL to camp out for the Youngstown State game.

To e-mail reporter: [mjh5507@psu.edu](mailto:mjh5507@psu.edu)

# MCG provides greek experience rooted in culture

**Series note:** This is the last in a five-part series offering a closer look at the recruitment process.

By Vera Greene  
COLLEGIAN STAFF WRITER

When students contemplate joining greek life, their initial thoughts don't usually wander to cultural roots.

But the Multicultural Greek Council (MGC) has provided an opportunity for diverse students to connect with their backgrounds during their college careers.

MGC President Pankaj Khurana, also the rush chairman for Delta Sigma Iota, said his fraternity is the first and only South Asian-interest fraternity at Penn State.

Priding itself on values of service, education and unity, Delta Sigma Iota has been named the chapter of excellence for the last three years, he said.

"We do a lot of community service and we get involved with small-

erhood," Khurana (senior-health policy and administration) said.

Delta Sigma Iota, which Khurana described as having a "solid networking base," is a lot smaller than most of the fraternities in MGC.

"We're so much tighter as a group and our brotherhood is stronger because we all know each other so well," Khurana said.

With 16 active members on campus, Khurana said during recruitment Delta Sigma Iota chooses quality over quantity, picking brothers who are focused on the traditions and values of the fraternity, Khurana said.

The fraternity is open to all sorts of diverse backgrounds, not just South Asians, he added.

Merliz Tejada, vice president of Lambda Theta Alpha — a Latina sorority at Penn State — said her sorority's main goal is cultural and social awareness.

"We're not about just partying," Tejada (junior-community environment and development) said. "It's more about letting people know of issues that aren't being talked about."



Courtesy of Delta Sigma Iota

Members of Delta Sigma Iota stand with the Nittany Lion shrine. Delta Sigma Iota is the first South Asian-interest fraternity at Penn State.

In Lambda Theta Alpha, there is no recruitment process but instead, an orientation process where women learn all the different aspects of the sorority. By doing this, it helps the women decide about becoming a member so they know exactly what they are joining.

"Orientation is where you get to realize all your potential," Tejada said. "You have a lot of interac-

tions where you learn to present yourself in front of people. You learn about time management as well."

With seven active members on campus, Tejada said it's important to know this is a membership for life.

"We're not the typical sorority that kind of likes each other and kind of doesn't," Tejada said, "I feel we do have a real sisterhood."

Angel Zheng, a member at Asian-interest sorority Sigma Omicron Pi, said the sorority looks for women who can contribute to the organization and develop leadership skills during recruitment.

"After we get to know them, we interview and make sure they can handle the responsibilities," Zheng (senior-education and public policy) said.

Zheng, who holds the position of co-rush chairwoman, co-cultural chairwoman and social chairwoman, said it's her sorority's main initiative to help members become leaders.

Since there are only nine active members on campus, Zheng said it is vital that women who join are ready for the challenge.

Though Sigma Omicron Pi is Asian-centered, Zheng said this should not discourage a student from joining any of the multicultural greek fraternities and sororities.

"In this day and age, there is no room for discrimination," Zheng said.

To e-mail reporter: [vhg5003@psu.edu](mailto:vhg5003@psu.edu)

**Discount Smokes**  
1/2 Price Off  
Make Your Own Blend  
Calder Convenience  
213 East Calder Way  
7am - Midnight  
Next to the Gaff

**CUSTOM PRINTED T-SHIRTS SAME DAY NO MINIMUMS**  
PEOPLES NATION  
126 E COLLEGE - 861 2626  
WWW.PEOPLESNATION.NET

PUCA 107326  
**Taxi**  
By Handy Delivery  
814-355-5555  
We accept Credit and Lioncash

**The Paper Plate**  
dining guide  
powered by [StateCollege.com](http://StateCollege.com)  
GO TO [psucollegian.com](http://psucollegian.com)

SHOW YOUR TEAM SPIRIT!  
**WAVE-IT-NOW!**  
It's a waver!  
It's a seat cushion!  
IN STORES NOW!  
[www.wave-it-now.com](http://www.wave-it-now.com)

**THE VERY BEST IN AUSTRIAN HOME COOKING**  
Where bacon is an herb  
NEXT to the STATE THEATRE  
For Home Football Weekends We Are Open 10-3  
GREAT PRICES!  
132 W. College Ave. 238-0200  
Eat In • Take Out • Catering

**SPIDER KELLY!**  
FRIDAYS • 10PM  
**Happy Hour**  
Friday 6-8pm  
Saturday 9-11pm  
**GOOD EATS**  
All the time.  
THE DARKHORSE Tavern  
128 E. College Ave. • State College  
[DarkhorseTavern.com](http://DarkhorseTavern.com)

Auto Loan Rates As Low As  
**3.5% APR\***  
in times like these saving money is a great thing  
Penn State Federal Credit Union  
1937 North Atherton Street • State College, PA 16803  
P. (814) 865-7728 • F. (814) 863-6183  
www.PennStateFederal.com  
\*APR = Annual Percentage Rate. Rates are based on applicant's credit history and year, make and model of vehicle. Expires on September 30, 2010. Valid on 2006 and newer auto loans with terms up to 60 months. New loans only. No other loan discounts apply.

**CATA Game Day Football Shuttles**  
Two Shuttles To Get You There Fast!  
**Downtown Shuttle -**  
Downtown/Beaver Stadium  
**South Atherton Shuttle -**  
S. Atherton St./Hills Plaza/Windmere Park/Beaver Stadium  
Only \$2 Per One-Way Trip!  
Seniors and Half Fare Participants ride for half the fare (\$1.00) with proper identification.  
Service Begins 3 Hours Before Kickoff (5 Hours Before Games Starting After 5:00 p.m.)  
**CATA**  
Schedule & Route Information:  
(814) 238-CATA(2282)  
[www.catabus.com](http://www.catabus.com)