

Officer's record questioned

By **Brendan McNally**
COLLEGIAN STAFF WRITER

An attorney is questioning the credibility of a state trooper who filed a criminal complaint in May against a Boalsburg man charged in connection to a string of Centre County robberies.

Dmitriy Litvinov, 23; Maksim Illarionov, 21; and Alexei Semionov, 23, were charged in connection to a several armed robberies occurring at local busi-

nesses and residences from November 2009 to March 2010, according to court documents.

Litvinov's attorney Karen Muir said in Centre County court during a hearing Monday that she received a letter from the Pennsylvania State Police (PSP).

Muir said the letter stated that Trooper Leigh Barrows — who in May authored the court documents detailing Litvinov's charges — was disciplined in 1992 for making dishonest statements

in an administrative interview.

No further information about the nature of the Barrows' misconduct was disclosed during the hearing. Barrows was not present at the hearing.

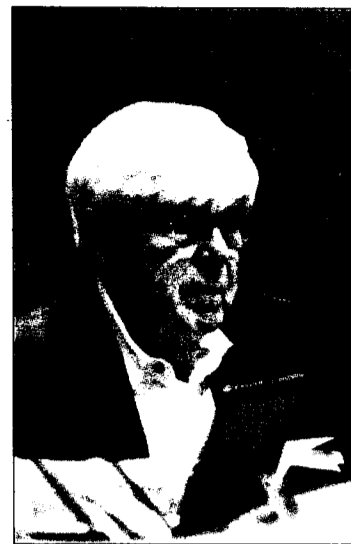
Muir said she wanted Centre County District Judge Jonathon Grine, who presided over the 30-minute hearing, to order Centre County District Attorney Stacy Parks Miller to release the trooper's personnel record that contains details of any disciplinary

actions taken against Barrows.

Muir said she may want to use the file to bring the trooper's credibility into question during a later trial.

Barrows filed a criminal complaint in May that said Litvinov took part in an armed robbery of The Dollar General Store in Centre Hall, Pa.

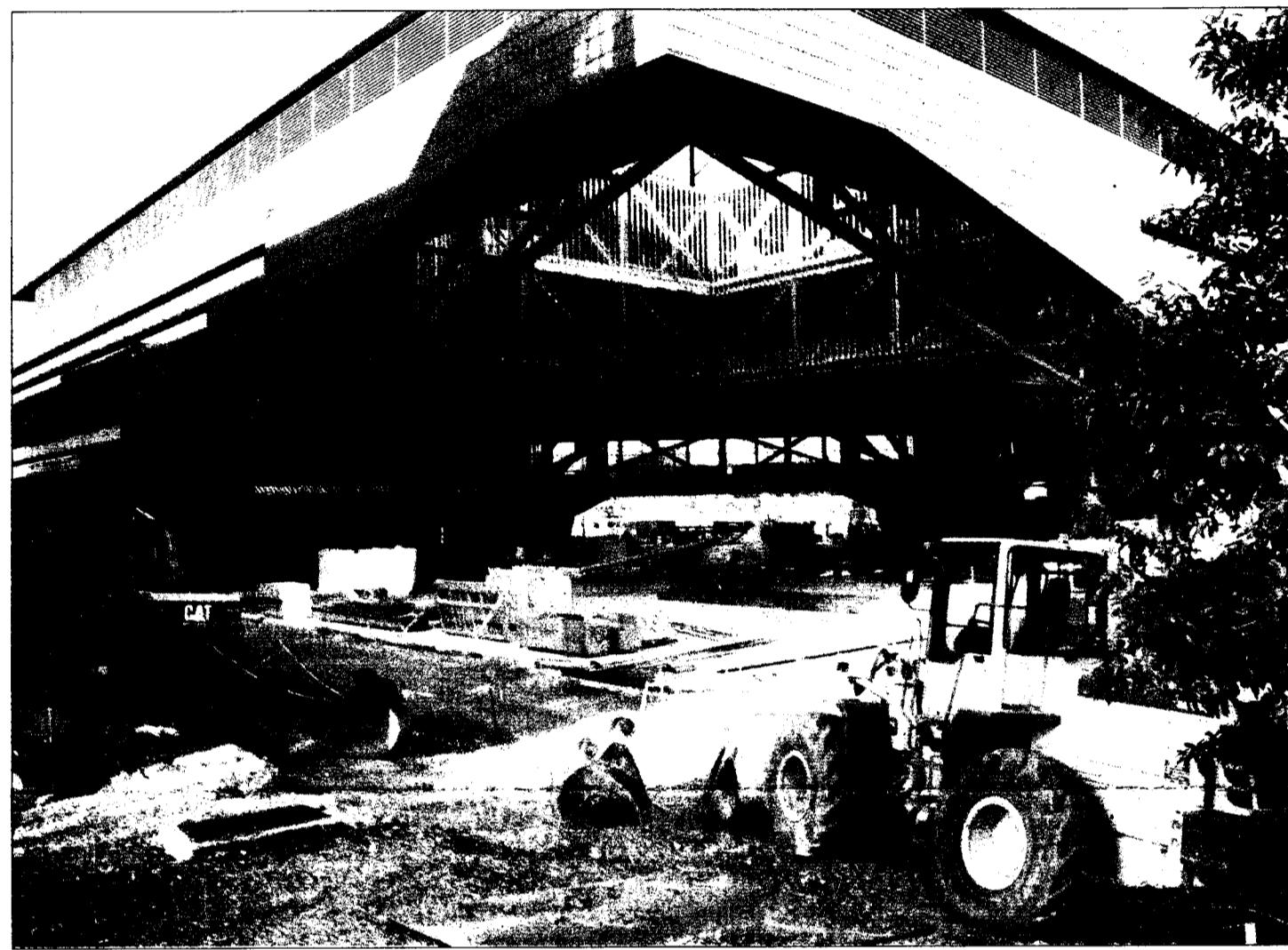
Grine did not make a decision in the hearing yesterday and told the attorneys to submit written
See TROOPER, Page 2.



M. Antonio Silas/Collegian

Council member Peter Morris discusses the West End Monday.

BUILDING SCIENCE



Lynn McGowan/Collegian

The Millenium Science Complex is scheduled to open in the summer of 2011. The 275,000 square foot building, set on the corner of Bigler Road and Pollock Road, will serve as the main hub for the Life Sciences and the Material Sciences' faculty and students. When completed, the structure will have three floors housing facilities for infectious disease, animal research, neuroengineering and several other labs.

West End stalls

By **Zach Geiger**
COLLEGIAN STAFF WRITER

Monday night's State College Borough Council Meeting attempted to tackle the issues surrounding the West End Development program, but ultimately ended with the council deciding to hold off on the vote.

The proposal, which would alter building standards in the West End of State College, was supposed to be approved by the council ahead of an undetermined public hearing on the proposal.

Planning Director Carl Hess presented the latest plan for the West End to the council Monday night. The original plan was revised following a July 12 council meeting that proposed changes in subdivision zoning and revised height restrictions, Hess said.

"I'd rather not push this back again," Borough Council President Ron Filippelli said.
See ORDINANCE, Page 2.

Ticket options missing

A glitch prevented seniors from ordering two add-on options.

By **Zach Geiger**
COLLEGIAN STAFF WRITER

The misprinted "Whitehouse" on the September 25 Penn State v. Temple game ticket is not the first error in this year's online football ticket sales.

"Buying and managing season tickets online is entirely new," Associate Athletic Director Greg Myford said. "It's taken some getting used to from both Athletics and the student body."

This season's ticket sale began on Monday, June 21 — starting with the senior class. Upperclassmen were able to order tickets through Ticketmaster.com using their Penn State student ID to verify their class status. At the online checkout students were given the option to purchase season football tickets as well as basketball tickets and the official White Out T-shirt — except the add-ons proved to be a challenge for many seniors.

"For the first hour of the senior sale on the first day, only the football ticket could be ordered," Myford said. "The system was not allowing for other items."

The seniors weren't alone — the junior class sale was also affected during the ticket sale process, Myford said.

"Each sale was inexplicably assessed an international surcharge of \$2 per order," Myford said.

Meaning, instead of paying \$218 for season tickets, an extra \$2 fee was charged during the sale.
See TICKETS, Page 2.



Courtesy of Natalia Pilato

Painters work on the mural that is set to go on display on the corner of Beaver Avenue and Fraser Street.

Mural attracts art lovers

By **Kathleen Loughran**
COLLEGIAN STAFF WRITER

Local art activist Tyler Wagner said State College is a "launch pad."

Because of the borough's strong community and ties to Penn State, people's dreams "begin to take flight," Wagner said.

With help from the community, the Community Arts Collective conceived the theme — Dreams

Take Flight — for a new community mural, to be located on the corner of Beaver Avenue and Fraser Street, said Wagner, the group's fundraising coordinator.

Though Wagner has helped with the project from the beginning, he said Artistic Director Elody Gyekis and Executive Director Natalia Pilato are the "leadership of this project."

"Those two gals really are the ones who are responsible for how successful this project has been,"

Wagner said. "My role has really been one of support."

Pilato also said the idea for the theme came because it fit perfectly for the State College community.

"We felt like State College is a place where things start and kind of shape, and a lot of people move away and come back and sort of migrate to and from the area," she said. "People come here to aspire. Dreams are taking flight
See MURAL, Page 2.

Webster's resolution approved

By **Paul Osolnick**
COLLEGIAN STAFF WRITER

The State College Borough Council adopted a resolution that stated the importance of Webster's Bookstore Café to the downtown community at its meeting last night.

The resolution "Support of Webster's Bookstore Café" received a unanimous vote of approval from the council. The final version of the resolution was an edited version of the original proposed by Webster's patron and supporter Joel Solkoff.

Borough Council President Ron Filippelli made the changes to the resolution drafted by Solkoff and was advised by council member Peter Morris, cutting the resolution down to three paragraphs.
See WEBSTER'S, Page 2.



Solkoff

Area caverns entice families, PSU spelunkers

Series note: This is the second in a five-part series that explores unusual summer activities.

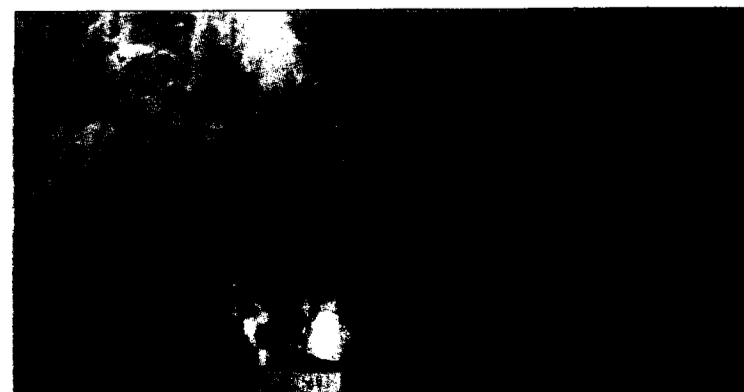


By **Anita Modi**
COLLEGIAN STAFF WRITER

Penn State student adventurers fazed by the dark depths of Pennsylvania may find something more welcoming than the caverns' beauty underground — like relief from the summer heat, said Terri Schleiden, marketing director for Penn's Cave.

The caves are naturally held at a constant 52 degrees and serve as a refreshing refuge from the heat waves and temperature highs common to State College summers, she said.

Visitors to Penn's Cave are offered tours of the limestone-covered caverns by motorboat, led past formations enhanced by
See CAVE, Page 2.



Courtesy of pennscave.com

Explorers take a boat tour through limestone formations in Penn's Cave.