

JURY OUT ON DRY RECRUITMENT LOCAL, Page 3.

'QWIK' RETURN
Rock radio station sees high rating
A&E, Page 10.

TECH-BOOKS
Students and faculty weigh in on e-readers
LOCAL, Page 4

The Daily Collegian

psu.collegian.com

Published independently by students at Penn State

Vol. 110 No. 96

Wednesday, Feb. 10, 2010

30 cents off campus

IFC restricts State Patty's parties

By Sarah Peters
COLLEGIAN STAFF WRITER

No liquor, no wine and no more than 50 non-members — those are the terms fraternity presidents handed down late Tuesday night for State Patty's Day fraternity parties.

Presented with crime statistics from previous State Patty's Days, the presidents took a strong stance on the tradition, which has come to be known for increased crime due to

excessive alcohol consumption.

IFC President Max Wendkos said the council discourages irresponsible drinking year round.

"We strongly discourage unsafe drinking," Wendkos (senior-marketing and psychology) said Sunday. "That has nothing to do with State Patty's Day — that's all the time."



Wendkos

On State Patty's Day in 2009, 311 calls were made to State College Police Department. Last year's event also saw 79 summary criminal arrests, 31 noise citations, 21 alcohol overdoses, 14 DUI arrests and \$4,500 in the police department's overtime costs.

The council's decision comes after the presidents voted earlier this year to eliminate Wednesday socials and to restrict drinking during recruitment. In addition, as part of the new social policy, regular fraternity parties can host up

to 300 people and most parties screen guests with privately hired security personnel.

Former IFC President Luke Pierce said the council made a pragmatic decision in restricting alcohol consumption on the holiday, not eliminating it altogether.

"There's no way you're going to stop a tradition like this with a policy-driven measure like that," Pierce (senior-economics) said. "It's going to be a long day. Slowing the consumption of alcohol is certainly a good idea."

University Park Undergraduate Association President Gavin Keirans said the IFC has done "a great job of attempting to change the culture within greek life."

"In large part, the IFC and greek life as a whole set a lot of the social standards of the university," Keirans (senior-business management) said.

To e-mail reporter: svp5071@psu.edu

For more coverage on State Patty's Day | LOCAL, Page 4.

Budget keeps funds static

By Colleen Boyle
COLLEGIAN STAFF WRITER

Tuesday morning, Gov. Ed Rendell flatlined state appropriations to Penn State at \$333.9 million for the 2010-2011 fiscal year — meaning tuition will likely rise by almost 5 percent for in-state students.

However, Penn State is seeking more: \$360.9 million from the state, a 3.9 percent increase. Rendell's allocation is the same amount Penn State received last year, but Penn State Spokeswoman Lisa Powers said the university needs help with cost increases that are beyond its control.

"Staying level is obviously preferable to receiving a cut," Powers said. "But it still brings us up short of what we need to cover these costs and keep a quality education affordable."

Powers said the university will take time in the coming months to lobby for raising the appropriations amount.

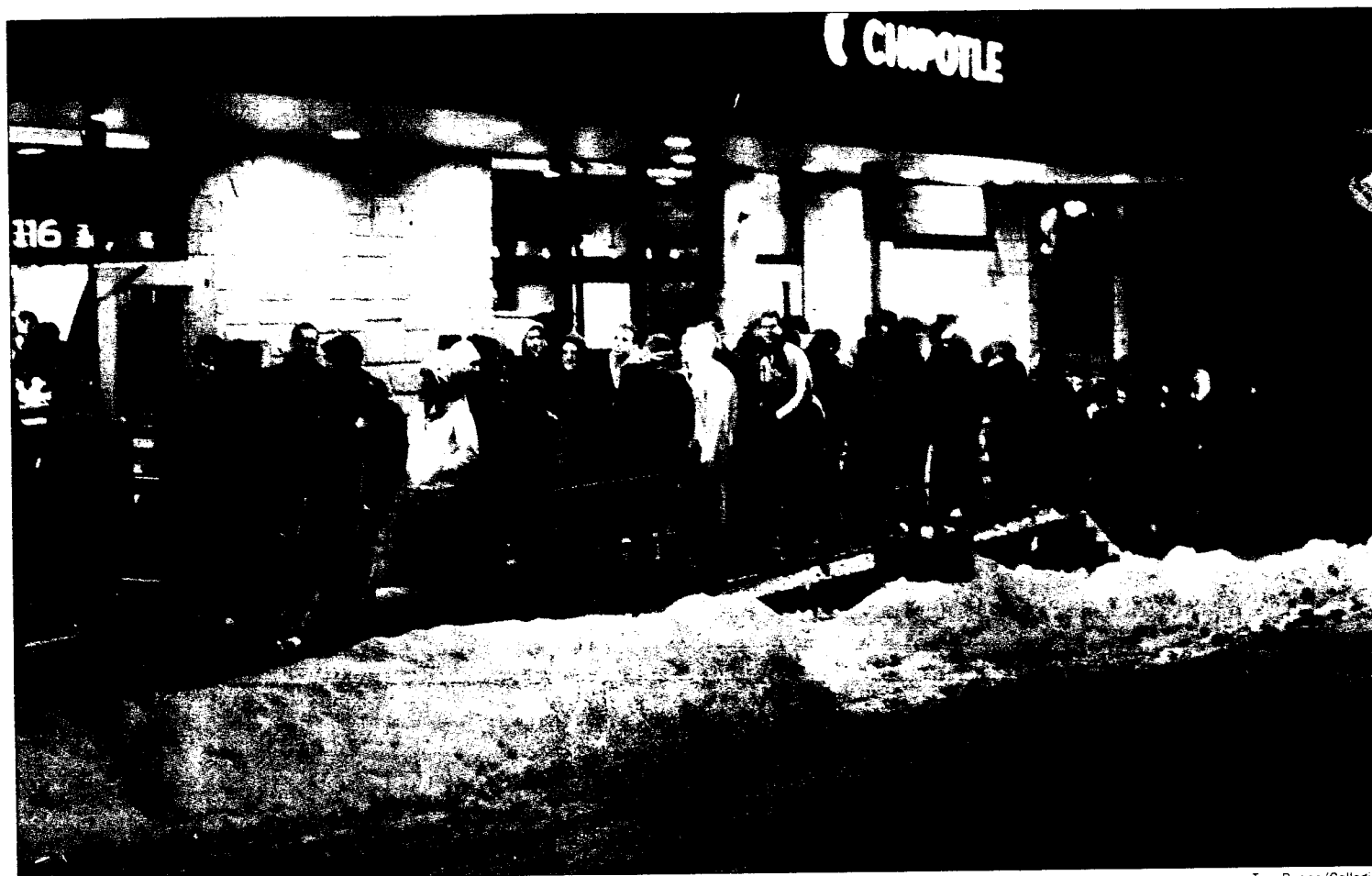
"The governor's budget proposal is just the first step," Powers said. "University administrators will spend time in Harrisburg in the coming weeks."

See RENDELL, Page 2.

BY THE NUMBERS

\$360.9 million
What PSU hopes to receive in state appropriations

4.9% (in-state)
3.5% (out of state)
tuition increases for 2010-2011 if PSU receives the 333.9 million



Tom Ruane/Collegian

Students braved the cold and snow to receive a free burrito from Chipotle on Tuesday. The National Weather Service issued a winter storm warning for today through 7 p.m., according to Penn State Live. Centre County declared a state of emergency through Thursday at 7 a.m.

Snow calls OPP into action

By Laurie Stern
COLLEGIAN STAFF WRITER

In his 17 years as Penn State's University Snow Marshal, Lloyd Rhoades has developed a reputation for foiling the destructive plans of Jack Frost.

He recalled an instance about 10 years ago when his team of Office of Physical Plant (OPP) workers plowed snow in front of an ambulance in order to get an expectant mother to the hospital in time to deliver her child.

"We plan for the worst and hope for the best," he said.

And preparation has been the key to success over the past week for Rhoades and his staff of OPP workers, as University Park has already received more than 42 inches of snow this season. Typically, 50 inches of snow accumulation is the expected amount for a State College winter.

See SNOW, Page 2.

For coverage on the storm throughout Pennsylvania | STATE, Page 7.

Snow preparation

State College is facing extreme weather conditions today, but during this month three years ago, students had a snow day.

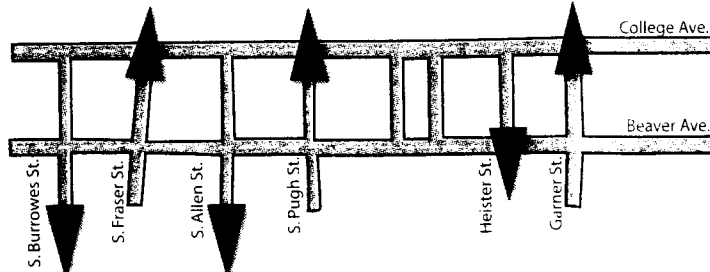
	Snow	High	Low	Winds
Today's forecast	4-8 inches	26 degrees	26 degrees	30 mph
Feb. 14, 2007	1 foot	20 degrees	7 degrees	30 mph

Source: Accuweather

Phenola Lawrence/Collegian

One-way ticket

Major downtown streets could be changed to one-way streets to open space for bike and bus lanes.



Source: State College Transportation Commission

Nicole Leva/Collegian

Downtown streets may turn one-way

By Nathan Pipenberg
COLLEGIAN STAFF WRITER

Penn State students could see major downtown streets — including Allen Street and Pugh Street — become one-way, making room for bike and bus lanes but removing parking spaces.

Select downtown streets could become one way in north-south pairs: Burrowes and Fraser Streets, Allen and Pugh Streets and Garner and Heister Streets, State College Transportation Commission members said during a Tuesday meeting.

Commission members also discussed plans to make a block of Allen Street a pedestrian mall. State College Borough Council President Ron Filippelli said the one-way plan is still in its early stages and council is unlikely to make a decision on the issue for quite some time.

He also said the idea of creating a pedestrian mall on Allen Street is nothing new.

"That's been floating around for many, many years," Filippelli said. "Unless I see some strong data that shows that would be

See STREETS, Page 2.

Mezzanine to bring rapper to Penn State

By Nick Weingartner
COLLEGIAN STAFF WRITER

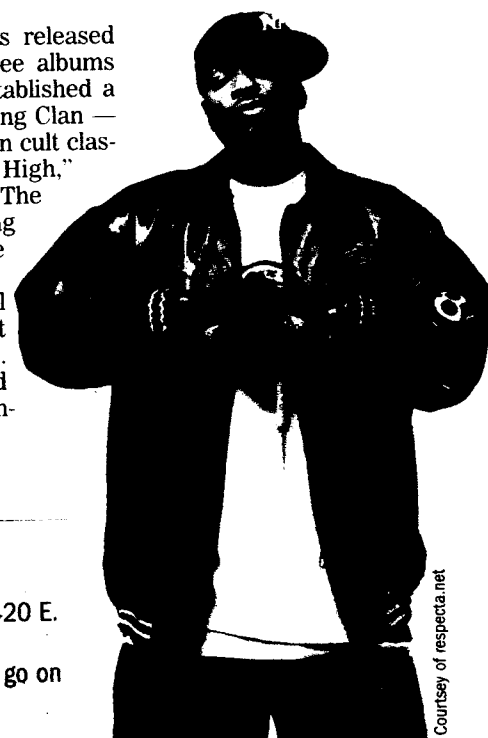
eral manager of Mezzanine. Fan Jeff Masters has followed Method Man throughout his career.

"I used to listen to Wu-Tang. See METHOD MAN, Page 2.

State College will get a chance to enter the Wu-Tang later this month when rapper Method Man comes to town.

The artist, who has released four solo albums, three albums with Redman and established a legacy with the Wu-Tang Clan — not to mention acted in cult classics like "How High," "Garden State" and "The Wackness" — is making his way to State College.

Method Man will perform on Feb. 25 at Mezzanine, 420 E. College Ave., said Lance Falkowski, gen-



Courtesy of respectata.net

If you go

What: Method Man
When: Feb. 25
Where: Mezzanine, 420 E. College Ave.
Details: Tickets may go on sale Feb. 15 for \$30



Carolyn Kaster/Associated Press
Gov. Ed Rendell delivers his budget address to a joint session of Pennsylvania legislators.