

Hay Fever

The humorous play by Noel Coward will hit the Citizens Bank Theatre LOCAL, Page 3.

On the Road Again

The State College Spikes prepare for a six-game road trip after spending nearly two weeks at home LOCAL, Page 3.

Court is in Session

Obama's Supreme Court justice nominee Judge Sonia Sotomayor could be the first Hispanic justice on the court. NATIONAL, Page 3.

THE DAILY

www.psucollegian.com

Collegian

Tuesday, July 14, 2009

Published independently by students at Penn State

Vol. 109 No. 192

30¢ off campus

Ten students contracted swine flu

University officials: three more potential cases of the H1N1 virus await results

By Kevin Cirilli

COLLEGIAN STAFF WRITER | knc5063@psu.edu

Penn State released a statement Monday announcing there have been 10 total students with confirmed cases of swine flu and three potential cases are pending test results.

University officials said three cases from last week that were awaiting test results have now been confirmed as swine flu, bringing the total to seven off-campus and three on-campus cases. Two of the three remaining pending cases involve off-campus students, according to the statement.

All of the students have recovered

or are recovering as expected, according to the statement.

Monday's announcement was Penn State's first statement released regarding the on-campus confirmed case of swine flu, the H1N1 virus.

"We thought it probably wouldn't hurt to have additional information out there about it," said Penn State Spokesman Geoff Rushton.

However, University Park Undergraduate Association (UPUA) President Gavin Keirans said he wishes the university would have released a statement when the first on-campus reports were confirmed.

"In the future, they need to be in a much more active dialogue with the

student body about what is going on," Keirans (senior-business management) said. "It would have probably been in everyone's best interest to have released a statement from the beginning."

Dr. Margaret Spear, the director of University Health Services (UHS), said Penn State health officials have frequent dialogue with residence life officials regarding the virus.

Some students with flu-like symptoms were asked to put on white masks as a precaution for not spreading the disease, said Spear, who is also the chairwoman of the Infectious Hazards Planning Group.

Students living on-campus with the

illness were asked to "self-isolate" themselves and were either asked to leave campus to recover or were quarantined to single-occupancy living spaces, such as rooms in East View Terrace, Spear said.

"In a community this large, there's a lot of misinformation and a lot of rumors," Spear said. "We're doing what we can to get the information out."

However, Spear did admit "there's a disconnect" between students and health officials, who have attempted to raise awareness in the residence halls about the virus.

Keirans said UPUA could play a role

See SWINE FLU, Page 2.

Cases by region

Worldwide: 94,512

(World Health Organization, July 6)

United States: 37,246

(Center for Disease Control, July 10)

Pennsylvania: 1,837

(PA Department of Health, July 13)

Centre County: 25

(PA Department of Health, July 13)

Penn State University Park: 10

(Penn State, July 13)

LB's trouble thing of past

By Wayne Staats

COLLEGIAN STAFF WRITER | wms5012@psu.edu

Any doubt about Navorro Bowman's status for the season opener has been erased by the linebacker himself.

"Yeah, I'm good," Bowman simply said Friday during the seventh annual Lift for Life competition at Holuba Hall.

The junior — who had his probation extended one year in April after court officials said the linebacker admitted to smoking marijuana twice during his prior probation — doesn't foresee any lingering problems. Bowman also summed up the judge's statement to him as "stay out of trouble."

Bowman's teammates echoed each other with the sentiment that the off-field issues are in the past.

Fellow linebacker Sean Lee said he didn't believe Bowman needed to change anything and that the prob-

lems came at the same time as tough personal situations in the past year and a half. Those events included the recent deaths of his father and high school coach.

"He's a great kid. He's a hardworking guy," Lee said. "He's always pushing us. He understands what his priorities are now, and I think he's going to be ready to go in the fall."

Bowman sees himself and Lee as two of the best linebackers in the country. But he also stretched his confidence to include the entire defense, which he thinks will be a tough one to line up against.

As for how the last few months have been, Bowman said they haven't been tough. Instead, it's about making the right decisions and maturing.

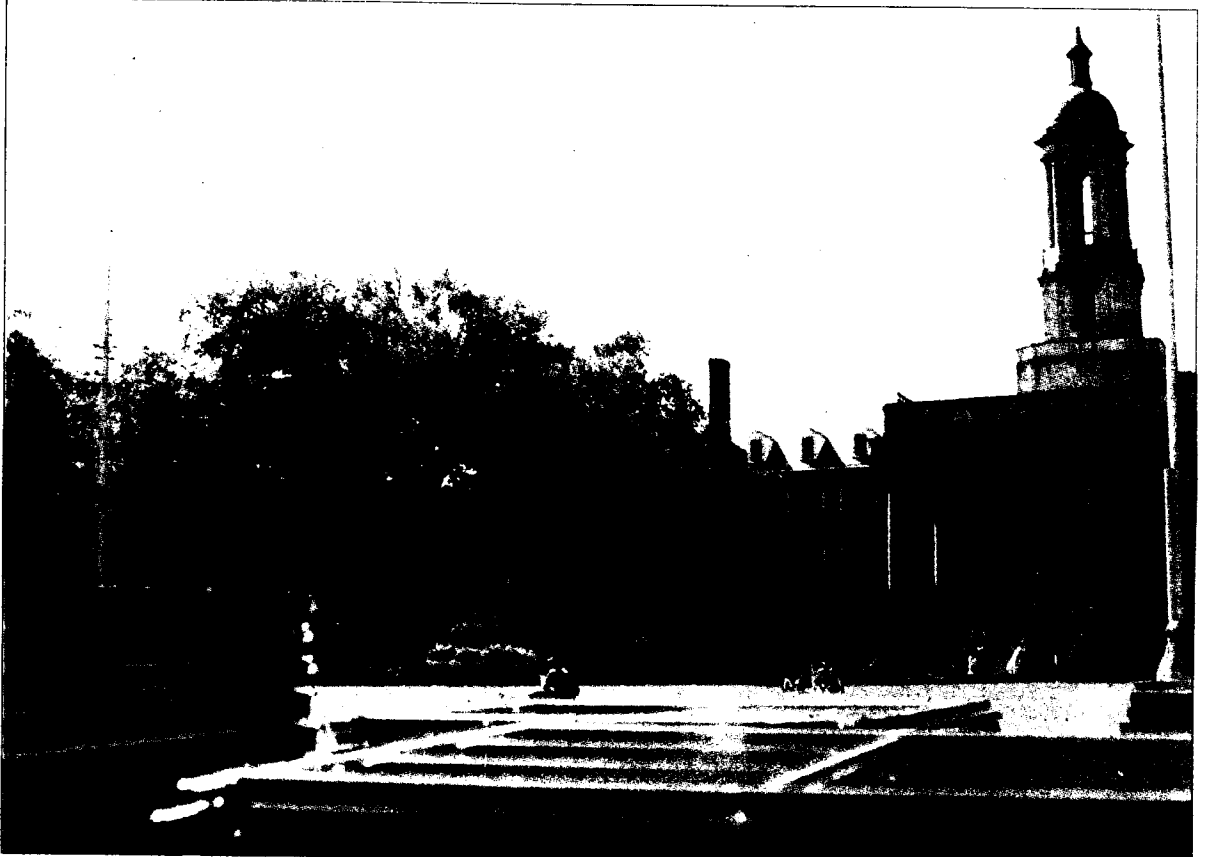
"It's about growing up and realizing what's right and what's wrong

See TROUBLE, Page 2.

For more coverage on the football team

SPORTS, Page 8.

LAZY DAYS



Marissa Gutherz/Collegian

Students lounge on the Old Main lawn Monday among the remains of a stage that was erected for the Central Pennsylvania Festival of the Arts, which began Wednesday. The stage hosted musical acts and live demonstrations.

Bike path could cut parking

By Peter Panepinto

COLLEGIAN STAFF WRITER | ppp5017@psu.edu

State College Borough Council members yet again discussed the Allen Street Bike Route — from Foster Street through Allen Street ending at the YMCA near Whitehall Road — which could eliminate parking spots and nine parking meters.

State College Borough Transportation Committee Chairman Rick Hirsch said he wants to add striped bike lanes along the roads,

without removing essential parking spots used by residents along the proposed path.

"We're in the early stages and we have to look at accidental data and parking usage," Hirsch said. "We don't want to remove parking that is really important."

Hirsch said the transportation committee is going to wait until the fall when the town is more populated to gather information about the use of parking spaces and road population. Hirsch said if the parking isn't used,

and the residents along the proposed bike path are comfortable, then the committee would like to remove the parking spots and replace them with bicycle lanes.

Council member Theresa Lafer said she thinks the new bike path is a good idea, but she wants to hear from people living on each street along the proposed path that currently use the parking spots.

"I see many more people on bikes than I used to," Lafer said. "But I don't

See BIKE PATH, Page 2.



Nathan A. Smith/Collegian

Penn State linebacker Navorro Bowman exercises Friday during Lift for Life.

Alum uses eBay as career finder

By Chris Bickel

COLLEGIAN STAFF WRITER | cdb5067@psu.edu

Today's tight job market has left a recent Penn State graduate with a finance degree facing some new options — including a role in a pornographic video.

John Pereca, who graduated in the spring, said he is having trouble finding a job. After trying traditional job Web sites like Monster.com and Craigslist.com and not achieving desired results, on a whim, he put himself up for auction on eBay a week before his May graduation.

"It was really spur of the moment," Pereca said. "I don't even know why I did it."

Pereca said there were 15 people watching the auction, and he received job offers, too. He received a job offer from a Penn State alumnus

in Atlanta; a job in Ocean City, Md., as a photographer for tourists; and even a role in an adult film.

Pereca said he denied the jobs for various reasons, telling those offering the adult film role that it was "flattering" but he had to respectfully decline.

He said he received "amazing feedback" from other users, but most were not bidding. One user bid 99 cents, and it was the only bid when eBay took down his auction for a "violation of the terms," but not before others had noticed it.

Jack Rayman, director of career

See EBAY, Page 2.



Pereca



Courtesy of The Melodic Plague

Local indie-rock band The Melodic Plague will open tonight at The Brewery as part of this week's Cherry Darling show.

Indie-folk, metal mix at Brewery

By Catherine Powers
FOR THE COLLEGIAN

Folky indie-rock and punchy metal will share the same space at this week's Cherry Darling show.

Local indie-rock band The Melodic Plague is scheduled to open July 14 for State College regular Phobos Anomaly.

See MIX, Page 2.

If you go

What: Phobos Anomaly with The Melodic Plague

When: Tuesday, July 14

Where: The Brewery, 233 E. Beaver Ave.

Details: \$3 for admission, must be 21 or older