

UNIVERSITY PARK FORECAST FOR THURSDAY, DEC. 6, 2001

The spring-like weather Happy Valley has been experiencing lately will come to an end as a cold front approaches the area today. This front will touch off a couple of showers and usher in much colder air for the weekend. High temperatures will finally return to near-normal levels by Saturday.

Weather forecast table with columns for Today, Tonight, and Tomorrow. Includes icons for showers, moon, and sun, and temperature ranges like High 58 and Low 40.

The extended outlook

- Tomorrow night: Partly cloudy and cool. Low 36.
Saturday: More clouds than sunshine with a sprinkle or flurry; chilly. High 42, low 32.
Sunday: Partly to mostly sunny. High 44, low 32.
Monday: Plenty of sunshine and not as cool. High 48, low 34.

ALMANAC

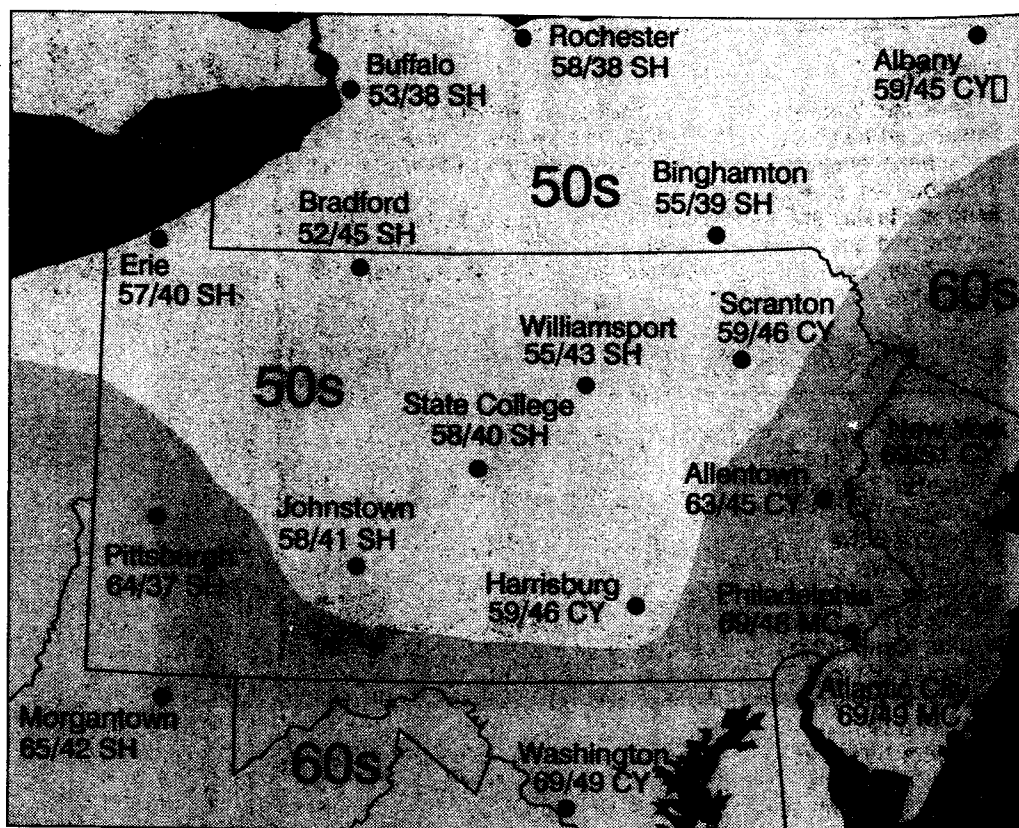
Almanac table listing weather statistics such as Normal high, Record high, Normal low, and Monthly Climate Summary.

BIG TEN FORECAST

Table showing weather conditions for various Big Ten universities like Illinois, Indiana, Iowa, Michigan, etc.

ADDITIONAL WEATHER

Visit the Campus Weather Service at: http://cws.met.psu.edu. Comments concerning the content of this page can be e-mailed to: cws@cws.met.psu.edu



REGIONAL FORECAST MAP

How to interpret this map: Shades of gray indicate the expected high temperatures for today. Today's forecasted high and tomorrow morning's low are also shown for selected cities.

PEOPLE IN THE NEWS

Burnett says 'I do' for the third time

LOS ANGELES (AP) — Carol Burnett is spending time these days with new husband Brian Miller. Burnett, 68, married Miller last month during a hush-hush ceremony. The couple appeared together last week at the Kennedy Center Honors in Washington, D.C.



Burnett

and her mother lived out of their car when they first arrived in Los Angeles so she could pursue acting.

"If you don't know any different, it's not like you are expecting to be in a suite at the Four Seasons," Swank, 27, told reporters recently. "It didn't seem strange. We didn't live in the car for a long time. We had \$75 to our name. And that's the money we used to eat. And sometimes we'd use our Mobil (gas) card and eat at a mini-mart."



Swank

Swank, who won a best-actress Oscar for 1999's "Boys Don't Cry," insists on having her animals with her when she's on location.

Steenburgen: Don't forget movie message

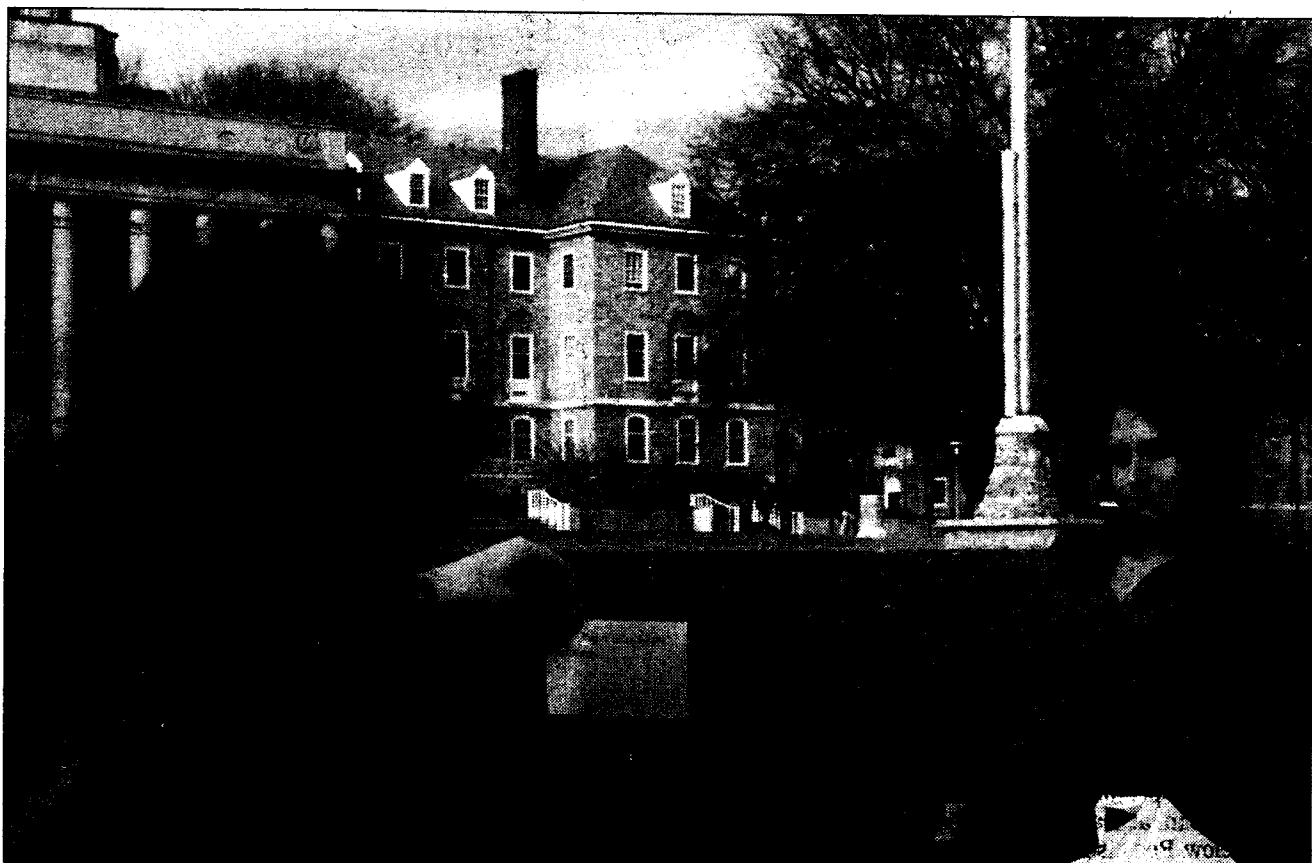
TORONTO (AP) — Mary Steenburgen says people need to be reminded of the message of her new movie, "Life as a House."

Steenburgen says the message is to appreciate the simple little things in life, and not take things for granted.

"I suppose there are people that live every single day of their life cherishing it as though it's going to be their last but for a lot of us, real life comes in and you forget," she told APTN.

"Life as a House" stars Kevin Kline as a dying architect who works to repair his relationship with his estranged family while building the house of his dreams.

Steenburgen plays Kline's next-door neighbor, a woman who seduces her daughter's boyfriend.



PLAYING THE CARDS: Marianne Wags (senior-public relations) shows a flash card to Carrie Sell (senior-journalism) on the lawn in front of Old Main. The students were preparing for an upcoming exam.

Hilary Swank reflects on rocky start in L.A.

NEW YORK (AP) — Hilary Swank says she's come a long way since she

NEWS IN BRIEF

Blood drive to honor traffic accident victim

The State College chapter of the American Red Cross will sponsor a blood drive today in memory of Penn State student Shellie Smarowsky, who was killed in a traffic accident on Monday, according to a press release from the organization.

The drive will take place from 10 a.m. to 4 p.m. at the Wesley Student Center, 256 E. College Ave.

All donors will be given a T-shirt and will be able to sign a T-shirt and cards to be presented to Smarowsky's family.

Showcase to display PSU students' ideas

Engineering students will have a chance to show off their solutions to real-world engineering problems from 1 to 3 p.m. tomorrow during the Learning Factory Project Showcase at the Penn State Conference Center Hotel.

The program, sponsored each semester, provides students in electrical, industrial and mechanical engineering the opportunity to explain projects they completed for classes.

Seniors involved had the opportunity to develop solutions to problems posed by 12 companies who came to campus earlier this semester looking for new ideas to engineering problems. The 31 senior capstone design projects focus on solutions to these problems, some of which included creating an automated wheelchair computer for disabled people, designing a demonstration facility for helicopter flight simulator and designing a demonstration grain bin simulator.

Some freshmen will also be presenting projects. Students in the first-year design and graphics course ED&G 100 (Introduction to Engineering Design) were given the problem of designing access for disabled people at Hazleton

Campus; finalists for each section of this course will present their solutions at the showcase.

"The goal is to give students a chance to show off their work for the semester," said John Lamancusa, professor of mechanical engineering and director of the Learning Factory.

PENNDOT shuts down traffic for construction

PENNDOT issued a traffic alert today for the Route 26/I-99 construction project in Centre County. The Route 322 westbound off-ramp to Innovation Park and Penn State University will be closed from 7 a.m. Saturday through 6 a.m. Dec. 17. While closed, crews will erect steel girders on the I-99 bridges over the ramp.

The closing will affect Route 322 westbound traffic headed to Innovation Park, the Penn State campus, Centre Community Hospital, University Park Airport, the Bryce Jordan Center and the Penn State Conference Center Hotel. Westbound traffic will be detoured using Route 322 to the Tofrees exit, south on Waddle Road to Route 322 eastbound, to the Route 322 eastbound off-ramp to Innovation Park and the university.

For more information visit www.penn-dot2.com.

POLICE LOG

Criminal Mischief: A Penn State staff member reported Tuesday that a restroom in Engineering Unit B was damaged. Penn State Police Services said. The estimated damage is \$1,000, police said.

Theft: An individual reported that 150 CDs were taken Tuesday from her unlocked vehicle on the 800 block of Southgate Drive, the State College Police Department said. The estimated value of the CDs is \$1,800, police said.

The current \$1 fare will be upped to \$1.25 starting next semester.

By Ely Spinweber and Roger Mahon COLLEGIAN STAFF WRITERS | exs268@psu.edu

Beginning next semester, students riding the Centre Area Transportation Authority's Centre Line will need an extra quarter to make it to destinations outside of the downtown area.

On Monday afternoon, CATA's board of directors voted to increase its base bus fare from \$1 to \$1.25, starting in August 2002.

The decision was made after the company's budget came out of balance last year, said Hugh Mose, CATA general manager.

While the cost of providing transportation in and around State College continues to rise annually, most federal, state and local funding for CATA stays

constant, and does not change, Mose said.

Because CATA provided extra bus service last year, many drivers were paid overtime, Mose said. In addition, the cost of natural gas, which powers the CATA fleet, rose. To balance the budget, the company has reduced service by five percent and will increase fares by 25 cents, he said.

This change has upset some Penn State students.

"Of course I'm not too happy about it," said Archell Dandy (freshman-division of undergraduate studies).

Leslie Gerfin (senior-human development and family studies) agreed. "A dollar's already enough," she said.

David Cooper (senior-architectural engineering) said the increase is a burden on students who do not have other transportation.

"I think that's cruel and unusual punishment for people without a car," Cooper said.

Cooper also said he wouldn't mind the change if CATA increased its services. "It's justified if they increased the

service of the Loop buses," he said.

David Boylan (junior-computer science) said the fair increase will be an inconvenience to students.

"A \$1.25 is kind of annoying because you always have to carry a quarter around with you," he said.

About 50 percent of CATA's \$6 million budget is provided by the university and realty companies that provide tenants with free bus passes, semester passes and tokens, Mose said.

The remainder of the funding is paid by taxpayers, he said.

Mose said that while the base fare of the Centre Lines will increase, the board of directors has not yet determined how it will adjust the price of passes and tokens.

The issue will be addressed at CATA's next board meeting in late January. Mose said students and State College residents are encouraged to attend the meeting. What will remain the same on the Centre Line buses, however, is that neither the fare boxes nor the drivers will be able to provide riders with change.

C-Net to move, charge PSU for services

By Abigail Silber FOR THE COLLEGIAN

Penn State, a charter member of C-Net, said it will no longer foot the company's rent bill after it moves from a campus building to a municipal location early next year.

C-Net operates the local government and education television channel and frequently runs Penn State programming.

In return, Penn State provides C-Net with office space to subsidize the money it would be expected to pay for programming.

C-Net decided to move from its offices in the James Building to a larger space in the State College Borough Municipal Building. Since it would no longer use Penn State accommodations, C-Net asked Penn State to pay for the programming.

"The cost for membership is determined by the percentage of use in the previous five years against other members," said James Rossi, executive director of C-Net. Penn State's usage percentage would require the university to pay \$27,000.

"Penn State has no problems with C-Net, however, we decided that we are not interested in paying for the services

at this time," said Dan Sieminski, assistant vice-president of finance and business.

Doug Anderson, dean of the College of Communications, said he understands the importance of C-Net while simultaneously understanding Penn State's budget restrictions.

"This is a difficult budgetary time," Anderson said.

Penn State spokesman Bill Mahon said Penn State couldn't take on the financial burden, "particularly in light of the Commonwealth's recent freeze of \$3.4 million in state appropriation for this year."

In response to Penn State's decision, C-Net created non-member rates.

"The non-member rate card will allow C-Net to continue our relationship with various classes and organizations," Rossi said.

"I think James' plan for non-member rates is a good solution," Anderson said. "This will allow each college to pay for only what they use."

Anderson also said he is not concerned about the effects of the changes on students.

"We will provide students with the same options as before," he said.

Although the non-member rates will enable the colleges to air their pro-

gramming on C-Net, some student-run clubs might not have the same opportunities.

Penn State News Magazine, a student organization that produces shows aired on C-Net, faces that problem.

"There is now a financial burden that falls upon the students," said Tiffany Parker, club president. "While we could petition UPAC (University Park Allocations Committee) for money that would take a lot of time, and in the meantime, we would lose viewers and opportunities for students to be involved in competitions."

Rossi said the largest consequence Penn State's decision will face is a tarnished image.

"C-Net allows Penn State to share information with the Centre County community," he said.

"Not participating in communication with the community may hurt Penn State's image."

As for the effects Penn State's withdrawal will have on C-Net, it is visible in the budget, Rossi said.

"Without Penn State's membership, the budget will be hit hard," Rossi said, adding that although C-Net will lose money from its reserve and capitals funds, it is adamant about keeping the operations budget the same.