

NPHC members look for houses

The four historically black fraternities are in the market for downtown homes for their organizations.

By NICOLE OSTROW
Collegian Staff Writer

Although most fraternity members have a house to call their own, National Pan-Hellenic Council fraternities are scattered throughout campus and downtown State College.

NPHC Co-President Ali Thrower is searching for houses for the four historically black fraternities in NPHC — Alpha Phi Alpha, Kappa Alpha Psi, Phi Beta Sigma and Omega Psi Phi — all currently located in 203B HUB.

"When NPHC had houses, there was more respect for our organization," he said.

Rick Funk, coordinator of Greek life, will be assisting Thrower with his search. "We'll be developing some strategies," Funk said, adding that they could follow a number of different tactics. He refused to comment further because he still needs to discuss the issue with Thrower.

Thrower said he is hunting for different houses for the fraternities in order to bring the community together with centralized locations. He said he wants houses by next fall.

"We're looking more so into smaller houses — eight to 12 bedroom houses with a ballroom," he said.

NPHC fraternities have occupied houses before, but because black enrollment at the University constantly fluctuates, the fraternity's membership suffers and members have trouble filling the houses, Thrower said. There are about 18 to 20 members in each fraternity, he said.

Minority enrollment increased University-wide by 113 students for 1993-94, but

total black student enrollment declined by 71.

Alain La Fontant, member of Alpha Phi Alpha fraternity, said he wants a house to call his own.

"I think it will definitely bring a rise in fraternity membership, social activities and programs," said La Fontant (senior-psychology). The bond between members will also increase, he said.

If the house is purchased before he graduates, La Fontant said he will move in and live there for a couple of semesters. A centrally located house would help attract new members to the fraternities and improve relations between NPHC fraternities, La Fontant said.

Randy Shine (graduate-health education) said the houses would give new members a sense of stability. Shine has been an Alpha Phi Alpha fraternity member since 1989.

"I think the need for a house for NPHC is important," he said. "It's part of the fraternal experience."

'Black flu' protest called successful

MEDIA (AP) — Although not as many people called out "sick" as they had hoped, black community leaders considered yesterday's Black Flu Day and protest a success.

The African-American Coalition of Delaware County had called for blacks to skip work and attend a rally on the courthouse steps, protesting the county's minority hiring practices.

"This will wake a lot of people up to what is going on here," said the Rev. Commodore Davis, an inspector for the Chester Police Department, who estimated 75 to 80 people attended.

The group, led by the Rev. Norman Gant of Chester, targeted the District Attor-

"This will wake a lot of people up to what is going on here."

— Rev. Commodore Davis
police inspector

District Attorney William H. Ryan Jr. defended his hiring practices. He has 32 assistant district attorneys, including nine women. All are white.

"There are very few black law graduates that show an interest in this office — that's the principal problem," Ryan said, noting that a starting salary was less than \$25,000.

Ryan said he's committed to working out a solution.

"It's a valid position to want to see blacks in this office," he said. "Maybe this protest will attract attention to the need and we'll find some qualified applicants."

Blacks comprise about 11 percent of Delaware County's 550,000 residents in suburban Philadelphia.

TAT ALL AGES
Night Club
VIVID 3 BANDS
BROKEN
THE PINCH
LAGER DRAFTS
WED 9/7 10 PM

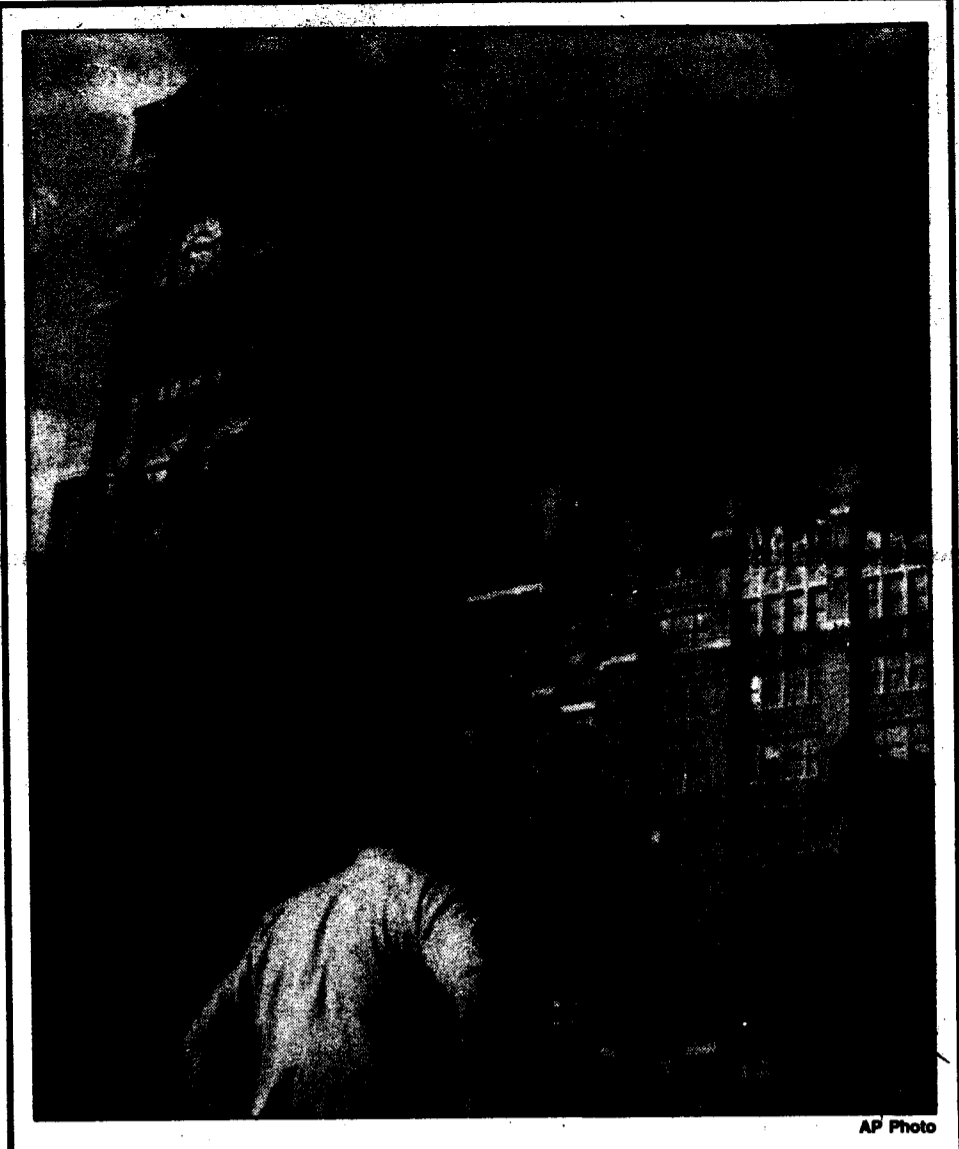
RUSH
ΦΓΠ

Interviewing On Campus?
Get the Job You want
Call Interview Power!
1-800-769-3040
• Information provided on Fortune 1000 Companies and others.
• Gain Confidence & stand above your competition.
Remember, 4 years of college come down to the 30 minute interview.
Give yourself The Competitive Edge!

PENN STATE BARBELL CLUB
★ Free Weights ★ Stairmaster
★ Nautilus ★ Bike Machines
★ Universal ★ Dumbbells
Conveniently located on campus at Rec Hall.
Lift where the intercollegiate athletes do.
If interested come to 21 Deike on Wed., Sept. 7 at 8:00 p.m. or call Greg at 867-0659.
Meeting Tonight

State College Martial Arts Academy
The Leader in Martial Arts Training
Learn from the Professionals
Choice of Four Styles of Instruction
Facilities Include:
Regulation Ring
Private Classroom
Heavy Bags
Speed Bags
Uppercut Bags
Weight Room
Exercise Bikes
Full Locker Rooms
Free Introductory Programs Available
Call 237-KICK for Information
Corner of College & Atherton, State College, PA 16801

DOUBLE SAVINGS DOUBLE SAVINGS
Our Biggest Sale of the Year
ARTCARVED
College Jewelry
Penn State Bookstore
on campus
Date: Aug. 24 - Sept. 9
Time: 10 a.m. - 4 p.m.
Place: Penn State Bookstore



Smokin'
A Philadelphia policeman controls traffic at Roosevelt Boulevard in Philadelphia. The highway closed yesterday when a fire destroyed Sears Roebuck & Company. Officials said a workman's torch started the blaze.

1994/95 Men's Basketball Managers Needed
All interested Full-Time Students Need to attend Meeting on
Thursday - September 8th at 3:00 p.m. in Section S1 - Rec Hall Bleachers

Career Interview Directory
The Following is a List of Organizations Scheduled to Interview The Week of October 17 Through October 21.
The Daily Collegian and the Career Development and Placement Service publish this directory every Tuesday as a service to the student community. Students may hand in Interview Request Forms from FRIDAY, 8:30 a. m., until 8:30 a.m. Tuesday for the companies listed below.
Listings
Airborne Express
Allegheny Ludlum Corp. (Steel Div.)
Amerada Hess
American Cyanamid
American International Group
Bankers Trust
BASF
CSC Consulting
Consolidated Electrical Dist.
Cooper Industries
Delaware Valley Financial Group
Eaton Corp.
Ferguson Enterprises
First National Bank of MD
Ford Motor Credit Co.
Ford Motor Co.
Goodyear Tire & Rubber Co.
ITT Hartford Life Ins. Co.
IBM-Boca Raton
Ingersoll Rand
International Paper
Lazarus Dept. Stores
Marriot International
Mobil Corp.
Motorola
NTW
Naval Underwater Systems Ctr. Newport
Northwestern Mutual Life/ Turner
Norwest Financial
Otis Elevators
Owens Corning
Owens Corning Fiberglas
Phillip Morris USA
Proctor & Gamble/ Mehoopany
Proctor & Gamble/ Prod. Dev.
Prophet 21
The Prudential Ins. Co.
Sherwin Williams
State Chemical
Triad Systems
Union Carbide Corp.
Victaulic Co. of America
Wallace Computer
The How To's Of On-Campus Recruiting
1. Register once, early in the academic year, in Room 413 Boucke and obtain a placement manual.
2. Review the Campus Interview Notice posted on the 4th floor of Boucke Building each week.
3. Complete an Interview Request Form & submit it between 8:30 a.m. Friday and 8:30 a.m. Tuesday in Room 413 Boucke.
4. Scan the Candidate Selection Notices outside Room 407 Boucke to see if you have been granted an interview.
5. If selected for an interview, sign up in Room 413
The Daily Collegian working hard to find the right job for you!
PLEASE CHECK POSTINGS ON 4TH FLOOR BOUCKE FOR ADDITIONAL INFORMATION

the **G Man**
Wednesday Specials
Moosehead Table Keg All Day.
Black & Tan Drafts 9pm-12pm
Nachos On Special 9pm-12pm
DJ Lasermix 10pm-1am
130 Heister Street
814-237-0361