

# COLLEGIAN CLASSIFIED ADS

### NOTICE

Collegian Inc. reserves the right to release the names of individuals who place advertising in The Daily Collegian, Collegian Magazine and The Weekly Collegian.

The decision on whether to release this information shall be made by the management of Collegian Inc.

The purpose of this policy is to discourage the placement of advertising that may be cruel or unnecessarily embarrassing to individuals or organizations.

HAVE THE SUMMER of your life and get paid for it! Come to the Penn State Harrisburg and be a counselor at one of the top camps in the country. Nov. 10-24 August 20. Counselor positions available in a wide range of activities, including: rock climbing, horseback riding, archery, and more. You'll have the chance to work with top athletes, meet interesting people, and have a great time. Call Penn State Harrisburg, Dept. 12, 100 University Park, Harrisburg, PA 17122. For information call 717-637-6633.

### APARTMENTS

**SPACIOUS 2 BEDROOM** available immediately. Microwave, dishwasher, many extras, near campus, \$23.00 includes utilities. Call 234-3597.

**THREE BEDROOM AVAILABLE** January 1st. Minimum 5 month lease. Great Price - Available Immediately. Call 234-3597.

**TWO BEDROOM APARTMENT:** Circleville Road, Unfurnished, graduate, professional, 238-4400 before 5 p.m. 2 BEDROOM APARTMENT IN house, laundry included, in Overlook Heights near North Atherton. Lease unit August. No pets. Professional or Graduate, preferred. \$350/mo. plus electric and oil. 234-3991.

### The Apartment Store

has a Limited Selection of 1 & 2 Bedroom Apts. Available Immediately with 9 mo. Leases and SPECIAL RATES

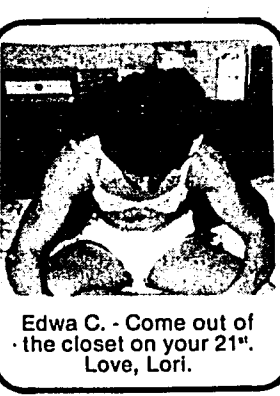
So, Stop in for A FREE REVIEW (Saturday by Appointment) 444 E. College Ave., Suite 210 234-6860

### FOR RENT

**ROOMS FALL SEMESTER** in Fraternity close to campus. Room, Bath, Meals and social \$1350. 238-9959.

**SMALL 1 BEDROOM MOBILE** home, for one person. Lease until August. No pets. E. College Avenue, \$200/mo. plus electric. 234-3991.

**SMALL 1 BEDROOM MOBILE** home, for one person. Lease until August. No pets. E. College Avenue, \$200/mo. plus electric. 234-3991.



### WANTED

Edwa C. Come out of the closet on your 21st. Love, Lori.

### WANTED

**BUYING GOLD CLASS** rings, jewelry, diamonds, coins, necklaces, bracelets, etc. Anything Gold or Silver! 238-7372.

**DEPARTATELY NEEDED: 2 MD.** general admission tickets. Call Eileen at 238-0385.

### WANTED

**GENERAL ADMISSION** OR date tickets Maryland game. Will pay top dollar. Mike 234-8083.

**STUDENT DATE TICKETS** OR Maryland game or Phil. 2 reserved for G.A. Call 237-6883, ask for Mike.

### WANTED

**WANTED TWO TICKETS** to Penn State Maryland football game. Call collect after 5:00 p.m. 304-242-7919.

**WANTED: UPGRADE DOWN** but tons. Will pay \$1 Call 862-4390.

### WANTED

**ALUMINUM NEEDS FOOTBALL** tickets for home and away games. Season or individual games. Call 814-237-5204.

### WANTED

**WANTED TWO TICKETS** to Penn State Maryland football game. Call collect after 5:00 p.m. 304-242-7919.

### WANTED

**WANTED: UPGRADE DOWN** but tons. Will pay \$1 Call 862-4390.

### WANTED

**ALUMINUM NEEDS FOOTBALL** tickets for home and away games. Season or individual games. Call 814-237-5204.

### WANTED

**WANTED TWO TICKETS** to Penn State Maryland football game. Call collect after 5:00 p.m. 304-242-7919.

### WANTED

**WANTED: UPGRADE DOWN** but tons. Will pay \$1 Call 862-4390.

### WANTED

**ALUMINUM NEEDS FOOTBALL** tickets for home and away games. Season or individual games. Call 814-237-5204.

### WANTED

**WANTED TWO TICKETS** to Penn State Maryland football game. Call collect after 5:00 p.m. 304-242-7919.

### WANTED

**WANTED: UPGRADE DOWN** but tons. Will pay \$1 Call 862-4390.

### WANTED

**ALUMINUM NEEDS FOOTBALL** tickets for home and away games. Season or individual games. Call 814-237-5204.

### TIYPING

**ACCURATE, EFFICIENT, TYPING** on IBM Word Processor. Call Robin at 234-1576.

### TIYPING

**A COMPLETE WORD PROCESSING,** typing, and rush service. Campus delivery. Call Anna Marie at 234-5855, 5:00pm-10:00pm, 238-8029.

### TIYPING

**A COMPLETE WORD PROCESSING,** typing, and rush service. Campus delivery. Call Anna Marie at 234-5855, 5:00pm-10:00pm, 238-8029.

### TIYPING

**A COMPLETE WORD PROCESSING,** typing, and rush service. Campus delivery. Call Anna Marie at 234-5855, 5:00pm-10:00pm, 238-8029.

### TIYPING

**A COMPLETE WORD PROCESSING,** typing, and rush service. Campus delivery. Call Anna Marie at 234-5855, 5:00pm-10:00pm, 238-8029.

### TIYPING

**A COMPLETE WORD PROCESSING,** typing, and rush service. Campus delivery. Call Anna Marie at 234-5855, 5:00pm-10:00pm, 238-8029.

### TIYPING

**A COMPLETE WORD PROCESSING,** typing, and rush service. Campus delivery. Call Anna Marie at 234-5855, 5:00pm-10:00pm, 238-8029.

### TIYPING

**A COMPLETE WORD PROCESSING,** typing, and rush service. Campus delivery. Call Anna Marie at 234-5855, 5:00pm-10:00pm, 238-8029.

### TIYPING

**A COMPLETE WORD PROCESSING,** typing, and rush service. Campus delivery. Call Anna Marie at 234-5855, 5:00pm-10:00pm, 238-8029.

### TIYPING

**A COMPLETE WORD PROCESSING,** typing, and rush service. Campus delivery. Call Anna Marie at 234-5855, 5:00pm-10:00pm, 238-8029.

### TIYPING

**A COMPLETE WORD PROCESSING,** typing, and rush service. Campus delivery. Call Anna Marie at 234-5855, 5:00pm-10:00pm, 238-8029.

### TIYPING

**A COMPLETE WORD PROCESSING,** typing, and rush service. Campus delivery. Call Anna Marie at 234-5855, 5:00pm-10:00pm, 238-8029.

### TIYPING

**A COMPLETE WORD PROCESSING,** typing, and rush service. Campus delivery. Call Anna Marie at 234-5855, 5:00pm-10:00pm, 238-8029.

### TIYPING

**A COMPLETE WORD PROCESSING,** typing, and rush service. Campus delivery. Call Anna Marie at 234-5855, 5:00pm-10:00pm, 238-8029.

### TIYPING

**A COMPLETE WORD PROCESSING,** typing, and rush service. Campus delivery. Call Anna Marie at 234-5855, 5:00pm-10:00pm, 238-8029.

## Help cure cancer write now

Thank you to the people who have helped in chemotherapy.

And new diagnostic techniques that combine the "eyes" of X-ray machines with the "brains" of computers. And successful new programs of combination therapies.

And there are promising reports coming in from research laboratories all over the world.

We now have everything we need to save about half the people who get cancer.

Please don't quit on us now. We're halfway there.

### PERSONALS

**ALPHA GAMMA RHO** II squirrel was fun doing Homecoming with you. Thank a lot! Love, Your Little Sister.

**TERRY, I LOVE you.** Your John David.

**1986 CINNAMON TRANS-AM.** Do you work out often? Girl from MI building 112/296.

### PERSONALS

**DANIELLE.** THIS PERSONAL IS definitely for you! You are a great girl and super roommate!

**NEED TO TALK?** Call partner, 238-6739. We're trained peer counselors who will listen and help. Free, confidential, caring.

**TELEVISION, STEREO REPAIRS.** Expert, affordable service on all brands. VCR's too. ACOEN, 232 S. Allen, 238-6342.

### PERSONALS

**AAAH DJ. PHANTOM** professional disc-jockey entertainment. Excellent sound system plus the area's largest mobile light show. Start planning your spring entertainment needs early with DJ. PHANTOM! Call 717-749-5593 or 234-5981.

**A UNIQUE EXPERIENCE.** The only PHANTOM DJ show. Fees on donation basis. Call 237-9217.

**D.J. LARRY MOORE** Concert-seen recorded music. Wedding expert! Tomalia 234-9591.

### PERSONALS

**LOST**

**GOLD ROPE BRACELET** Lost near Chapin Building. Reward \$200. Call 238-9826.

**LOST: A BLUE and white, PSU** Navy jacket. If found please call 234-3182. Reward offered.

**THIN, NAVY BLUE scarf** on October 30, in or around Findler rec. room. Very important to me! Call Margie 862-8206.

**FOUND**

**Found notices** are published for three days at no charge. This policy does not apply to "found" notices for "PSU" keys.

### PERSONALS

**FOUND**

**Found notices** are published for three days at no charge. This policy does not apply to "found" notices for "PSU" keys.

### PERSONALS

**FOUND**

**Found notices** are published for three days at no charge. This policy does not apply to "found" notices for "PSU" keys.

### PERSONALS

**FOUND**

**Found notices** are published for three days at no charge. This policy does not apply to "found" notices for "PSU" keys.

### PERSONALS

**FOUND**

**Found notices** are published for three days at no charge. This policy does not apply to "found" notices for "PSU" keys.

### PERSONALS

**FOUND**

**Found notices** are published for three days at no charge. This policy does not apply to "found" notices for "PSU" keys.

### PERSONALS

**FOUND**

**Found notices** are published for three days at no charge. This policy does not apply to "found" notices for "PSU" keys.

### PERSONALS

**FOUND**

**Found notices** are published for three days at no charge. This policy does not apply to "found" notices for "PSU" keys.

### PERSONALS

**FOUND**

**Found notices** are published for three days at no charge. This policy does not apply to "found" notices for "PSU" keys.

### arts



Glass Eye

## Band combines quirky pop with dark lyrics

In the summer of 1985, the quartet was spotlighted on an installment of I.R.S. Record's *The Cutting Edge*, called "The Austin Advocate of Rock 'n' Roll." A contract with the independent Westler Records label resulted; and Glass Eye's first album, *Huge*, appeared in early 1986.

*Huge* reveals the band to be one of the most rhythmically weird outfits in rock 'n' roll, stacking odd meters against angular tunes and stitching them together with intricate, original arpeggios mixed with chunks of tunes by Cab Calloway ("Minnie the Moocher"), AC/DC, and War ("Low Rider").

Glass Eye assembled by accident in October, 1983. Lead singer, composer and guitarist Kathy (or "K") McCarty, in search of temporary backup musicians for her own songs, enlisted old friends Beattie and drummer Scott Marcus. As a live combination, the trio proved so popular on the burgeoning Austin music scene that they decided to stick together, later adding Stella Weir on keyboards.

Merlo, their first EP, followed in the fall of 1984. Self-produced, self-distributed and ragged-edged, it nonetheless gained the band positive national and regional press by critics who couldn't agree whether Glass Eye was art-rock, hardcore, folk or pop.

J.D. Cosentino of *Musicians* magazine summed up the prevailing attitude thusly: "Interesting indie bands are a dime a dozen, but finding a record as distinctive and hypnotic as this is enough to restore any fan's faith in American ingenuity."

## Jazz ensemble plays tonight

By LYNN WAGNER  
Collegian Arts Writer

Demonstrating the shape of jazz past and present, the 19 members of the University's top jazz ensemble, Centre Dimensions, should be in rare form when they play at 8 tonight in the Music Building Reital Hall.

"It's a challenge to try to get 19 people to try to think together so in the end we produce one musical result," Dan Yoder, director of Centre Dimensions and director of jazz studies at the University, said.

Ultimately, though, the numbers will all add up when five saxophonists, five trumpeters, four trombonists, a pianist, a bassist, a guitarist, a drummer, and a player on vibes join together to create jazz. Add in a vocalist and the evening is complete.

"The program, which will feature many jazz styles, highlights 10 selections, including Duke Ellington's "Take the A Train" and "929 Special" (favorites of Count Basie's band) and Benny Goodman's "Stompin' at the Savoy." The group will also play the works of contemporary composers such as Rob McConnell.

Another ensemble, the Jazz Band II, directed by Brian Anton, will introduce the show with three jazz pieces, among them "March of the Toys" and "One More Time, Chuck Corea."

"We're covering five or six big band styles," Yoder said, enumerating jazz rock, latin, swing, ballads and blues.

"Tonight's performance will not just include sounds of traditional jazz instruments — some howling at the moon will be heard as well," Mark Lusk, a school of Music faculty member, will play the trombone solo "Wolf Eyes," a song that will feature the pre-recorded sounds of wolf howls. Lusk, a former member of the Chicago Symphony and a bass trombonist for Woody Herman's Thundering Herd, arranged the Paul Winter piece himself.

In preparing Centre Dimensions for tonight's concert, Yoder has followed a philosophy of the professional world of music. Most of the band's new pieces were not rehearsed until after their last concert. In rehearsal, Yoder discussed the style of the music and then went over certain parts, but not to the point of monotony.

"There's a certain element of all music that is spontaneous, especially jazz," Yoder said.

Jazz "loses its freshness when it's over-rehearsed," he added. "I think all music does."

The jazz ensemble's shows still hold the promise of the extemporaneous, which is the magic of jazz. And if tonight's performance surprises you with a few unknown works such as "Wolf Eyes" don't be alarmed. "That's one of the beauties of jazz," Yoder said. "You get to hear music you haven't heard before."

## 'Blue Sky Day' shines on WPSU's Top 20

The following singles make up WPSU's Top 20 for the week ending Nov. 5. Tonight at 8, 9, 11 PM will present the Top 20 Countdown.

- "Blue Sky Day" — Died Pretty
- "Fantasy 86"
- "Greetings to the New Brunette" — Billy Bragg
- "Mr. Pharmacist" — The Fall
- "It Could Be Sunshine" — Love and Rockets
- "The Great Divide" — Ruin
- "Broken Promise" — New Order
- "On the Screen" — Government Issue
- "Baby's on Fire" — The Creepers
- "Tasvo" — Das Damen
- "Scientist" — Mr. T Experience
- "With You" — Flaming Lips
- "In a Bad Way" — Certain General
- "Over There" — Housemartins
- "Like an Angel" — Mighty Lemon Drops
- "Whole Wide World" — Soup Dragons
- "Less than Gravity" — Moving Targets
- "Amusement Park" — Chameleons
- "The Brain That Wouldn't Die" — Tall Dwarfs

With their single "Blue Sky Day," Died Pretty is looking pretty on WPSU's Top 20 countdown of new music hits.

# 2 important steps to getting a job.

## 1.

**THE PENNSYLVANIA STATE UNIVERSITY**

BY AUTHORITY OF THE BOARD OF TRUSTEES AND UPON THE RECOMMENDATION OF THE FACULTY AND OF THE SENATE HEREBY CONFERS UPON

**RESSIE MAY**  
THE DEGREE OF  
**BACHELOR OF ART**  
IN RECOGNITION OF THE COMPLETION OF THE MAJOR IN GRAPHIC DESIGN

IN TESTIMONY WHEREOF THE UNDERSIGNED HAVE SUBSCRIBED THEIR NAMES AND AFFIXED THE SEAL OF THE UNIVERSITY THIS MONTH OF AUGUST A.D. 1986

## 2.

**CAREER OBJECTIVE:** Position in cartography, remote sensing or a related field which utilizes computers and geographic skills.

**EDUCATION:** B.A. in Geography, The Pennsylvania State University, Jan. 1984 (Penn State's Geography department was ranked No. 2 in the nation in the 1982 Jones-Lindsay Report; it is a B.S. ranked major).

**COURSE APPLICATIONS:** (Credits)  
Production Cartography (I)  
— Designed, scripted, photographed, developed and compiled production cartographic projects; received a B grade.  
Manual Cartography (I)  
— Designed and executed manual (black-and-white) cartographic projects (graduated symbol, isolate, choropleth maps); received a B grade.  
Remote Sensing and Photogrammetry (I)  
— Constructed photo mosaics and stereograms, took aerial photos. Learned applications of aerial photography in map-making. Learned techniques of obtaining and classifying satellite images for land-use/land-cover mapping; received a B grade for both courses.

**ADDITIONAL COURSES:** (Credits)  
quantitative geospatial techniques (I) \*  
geographic data systems (I) \*  
computer science (I) \*  
differential calculus (I) \*  
physical geography (6)  
human geography (9)  
linear (matrix) algebra (3)

**WORK EXPERIENCE:**  
Stock Room Manager/Receiving Clerk Dollar Bargain Store 11/86-Present  
— Designed and executed manual (black-and-white) cartographic projects  
Supervised up to 10 people who processed and stocked merchandise  
— Received merit raise after six months  
Food Service Worker Pablock Dining Hall 6/81-12/83  
— Learned how to work with unemotional and nonunionized workers ages 18 to 65, in order to accomplish goals  
— Received two merit raises

**ACTIVITIES AND HOBBIES:** Jazz Club, Underdogs (Geography Club), weightlifting, racquetball, reading

126 Carnegie Building  
University Park, PA  
863-3215  
8:30-4:30, Monday-Friday

**collegian production**

### NOTICE

Collegian Inc. reserves the right to release the names of individuals who place advertising in The Daily Collegian, Collegian Magazine and The Weekly Collegian.

The decision on whether to release this information shall be made by the management of Collegian Inc.

The purpose of this policy is to discourage the placement of advertising that may be cruel or unnecessarily embarrassing to individuals or organizations.

### APARTMENTS

**SPACIOUS 2 BEDROOM** available immediately. Microwave, dishwasher, many extras, near campus, \$23.00 includes utilities. Call 234-3597.

**THREE BEDROOM AVAILABLE** January 1st. Minimum 5 month lease. Great Price - Available Immediately. Call 234-3597.

**TWO BEDROOM APARTMENT:** Circleville Road, Unfurnished, graduate, professional, 238-4400 before 5 p.m. 2 BEDROOM APARTMENT IN house, laundry included, in Overlook Heights near North Atherton. Lease unit August. No pets. Professional or Graduate, preferred. \$350/mo. plus electric and oil. 234-3991.

### THE APARTMENT STORE

has a Limited Selection of 1 & 2 Bedroom Apts. Available Immediately with 9 mo. Leases and SPECIAL RATES

So, Stop in for A FREE REVIEW (Saturday by Appointment) 444 E. College Ave., Suite 210 234-6860

### FOR SALE

**BEST OFFER TAKES** my 1980 Ford Taurus. Best offer takes. Call 238-8882, 10a.m.-10p.m. only.

**FOR SALE SR. and J. Tickets** for Maryland and Pitt. Best offer 234-3182.

**GENERAL ADMISSION, DATE** and student tickets to the Maryland and Pittsburgh games. Good seats. Trades - phone. Call 238-8882, 10a.m.-10p.m. only.

**PENN STATE BOWL TOURS** - exclusively for P.S. students by Penn's 237-3282, 10a.m.-9p.m.

**STEVE WINWOOD TICKETS.** 862-8650 Ask for Mike or Pat. After 10a.m. Two together.

**STEVE WINWOOD TICKETS.** Two tickets for sale. Call Karl 862-7222.

### AUTO

**75 VW VAN:** Fuel injected, excellent condition. 234-3052

### ROOMMATES

**MALE ROOMMATE NEEDED:** Share efficiency apartment during Spring Semester one block from Penn State Harrisburg. Phone 237-0815.

**ROOMMATES WANTED** to share 2 bedroom Condo directly across from campus \$150 plus electric. Call 234-0610 or 717-776-3314.

### ROOMS

**BED AND BREAKFAST:** Historic home-Football weekends and other occasions. 238-2028.

**NON-SMOKING SERIOUS** student will enjoy quiet study environment. Private room, private bath, 30 feet from campus. 237-1029.

**TWO BEDROOM TRAILER.** Debra Taylor, call 234-4461.

### POSTAL AND BUSINESS SERVICES

### MAIL BOXES ETC. USA

GET YOUR RESUME DONE PROFESSIONALLY \$5.00

WITH THIS COUPON  
COUPON EXPIRES: 11/14/86  
\$3.00 EACH ADDITIONAL PAGE

311 S. Allen Street, State College, PA

### PSU COMPATIBLE TERMINALS

Rent terminals compatible with PSU Mainframe, FINET, LIAS. ACOEN, 232 S. Allen, 238-6021.

**RENT 3 MOVIES, PLAYER, 3** days, only \$19.95. Over 800 titles! ACOEN, 232 S. Allen, 238-6021.

### SCHOLARSHIPGRANTS

FOR colleges are available. Millions of unclaimed yearly call 1-800-USA-1221 ext. 9527.

### TIYPING

**ACCURATE, EFFICIENT, TYPING** on IBM Word Processor. Call Robin at 234-1576.

**A COMPLETE WORD PROCESSING,** typing, and rush service. Campus delivery. Call Anna Marie at 234-5855, 5:00pm-10:00pm, 238-8029.

### TIYPING

**A COMPLETE WORD PROCESSING,** typing, and rush service. Campus delivery. Call Anna Marie at 234-5855, 5:00pm-10:00pm, 238-8029.

### TIYPING

**A COMPLETE WORD PROCESSING,** typing, and rush service. Campus delivery. Call Anna Marie at 234-5855, 5:00pm-10:00pm, 238-8029.

### TIYPING

**A COMPLETE WORD PROCESSING,** typing, and rush service. Campus delivery. Call Anna Marie at 234-5855, 5:00pm-10:00pm, 238-8029.

### TIYPING

**A COMPLETE WORD PROCESSING,** typing, and rush service. Campus delivery. Call Anna Marie at 234-5855, 5:00pm-10:00pm, 238-8029.

### TIYPING

**A COMPLETE WORD PROCESSING,** typing, and rush service. Campus delivery. Call Anna Marie at 234-5855, 5:00pm-10:00pm, 238-8029.

### TIYPING

**A COMPLETE WORD PROCESSING,** typing, and rush service. Campus delivery. Call Anna Marie at 234-5855, 5:00pm-10:00pm, 238-8029.

### TIYPING

**A COMPLETE WORD PROCESSING,** typing, and rush service. Campus delivery. Call Anna Marie at 234-5855, 5:00pm-10:00pm, 238-8029.

### TIYPING

**A COMPLETE WORD PROCESSING,** typing, and rush service. Campus delivery. Call Anna Marie at 234-5855, 5:00pm-10:00pm, 238-8029.

### TIYPING

**A COMPLETE WORD PROCESSING,** typing, and rush service. Campus delivery. Call Anna Marie at 234-5855, 5:00pm-10:00pm, 238-8029.

### TIYPING

**A COMPLETE WORD PROCESSING,** typing, and rush service. Campus delivery. Call Anna Marie at 234-5855, 5:00pm-10:00pm, 238-8029.