

collegian notes

- The Amnesty International Campus Organization will meet at 8 tonight at the Wesley Foundation, 256 E. College Ave.
The Peer Contraceptive Education Program will hold an information session on volunteer opportunities with POEP at 7:30 tonight in 28 Ritenour.
The PSU Flying Lions will meet at 7:30 tonight in 242 Hammond Building.
The American Society of Civil Engineers will sponsor Col. Brown at 7 tonight in 110 Walker, speaking on water control and disaster relief.
Eco-Action will meet at 8 tonight in 225 HUB.
The HUB Craft Centre is holding registration for the last session of the semester from 12 to 5 today in 312 HUB.

police log

- Three women received minor injuries in a two-car accident Tuesday on Route 322 near the Tait Farm, the State College Police Department reported yesterday.
Heddy Sahakian, 19, 201 Outer Drive, was driving east on Route 322 when she attempted to make a U-turn and collided with another eastbound car driven by Ethel Barger, 58, of Lewisport.
Myrtle Bell, 62, of Lewisport, a passenger in Barger's car, and Barger were transported by ambulance to Centre Community Hospital, where they were treated for minor injuries and released, a hospital spokeswoman said.
Police said both vehicles were towed from the scene, and total damages to both were estimated at \$2,000.
Paul Silvis, 180 Grove Circle,

Execs mean business in PSU program

By LUKE GLUSCO Collegian Staff Writer

Senior-level corporate executives from all over the world will attend the University's Executive Management Program this summer, the associate director of the program said.

Kenneth R. Graham, director of executive programs for the College of Business Administration, said the goal of the program is to improve the abilities of upper-level executives to manage a number of different functional areas in a company at the same time.
During the four weeks the executives will attend classes from 8:15 a.m. to 4 p.m. on weekdays and from 8:15 a.m. to noon on Saturdays, Graham said. The program begins July 8 and ends Aug. 3, he said.
Vicere said the program, now offered at the University four times a year, is third in quality behind Harvard and Stanford Universities, according to a survey of companies ranked in Fortune 500 Magazine.
The College of Business Administration offers about 12 other programs that companies can send their employees to, Vicere said.

Penn State Sailing Club Meeting Thursday, April 12 10:6 Boucke 7:30 Mr. Linc King will speak

Good Luck & Good Times for Greek Week '84! Love, The Thetas

Mennonite Central Committee A representative of Mennonite Central Committee (MCC), Mr. Rich Sider, will be on the Penn State University Park campus (104 Eisenhower Chapel) on Monday, April 16, MCC is the relief and service organization of the Mennonite Church.

Beam me up Scotty! Phi Delta Theta and Gamma Phi Beta are trekking their way to #1

Leaders in HPER Career Day '84 Thursday, April 12 11:30 a.m. HUB Gallery Lounge Opening Forum: Career Paths with a Degree in HPER

Hear Ye! Hear Ye! The Olde College Diner 126 W. College Ave. Lunch Specials of outstanding quality at Diner prices are featured daily.

ATTENTION -COMPUTER SCIENCE MAJORS- -BUSINESS MAJORS- The Kinney Shoe Corporation will be interviewing on Campus April 18th and April 19th.

AIM HIGH Take Control We're looking for people who can take control of the skies as pilots in the U.S. Air Force.

THE ATHLETE'S FOOT THE ATHLETE'S FOOT THE ATHLETE'S FOOT 10% TO 50% Off ATHLETIC SHOES FREE PAIR ATHLETIC SOCKS WITH ANY SHOE PURCHASE

BANDOLINO bare foot CALDER SQUARE II OPEN NIGHTS UNTIL 8:30 M-F VISA MC & AMERICAN EXPRESS

Computerized Registration at Penn State Important Information on the New Procedure

Penn State is moving to an integrated, computerized registration system! The following information defines this process and provides a step-by-step procedure which will aid students in completing their Fall Registration Request Form by the April 16, 1984 deadline.

What is A.I.S.?

It is the Administrative Information System designed by Electronic Data Systems of Dallas, Texas for Penn State. This computerized system will streamline the University's Administrative and Academic

record keeping, and will provide a higher level of efficiency with a consequent saving in time and money. This system offers many new and exciting features that will benefit students and administration.

What Does A.I.S. Offer the Students of Penn State?

Some features offered by the system are 1) an admissions prospect and application file where up-to-date status can be found on anyone who has applied to the University; 2) a degree audit function so students can see exactly which courses they still need to graduate; 3)

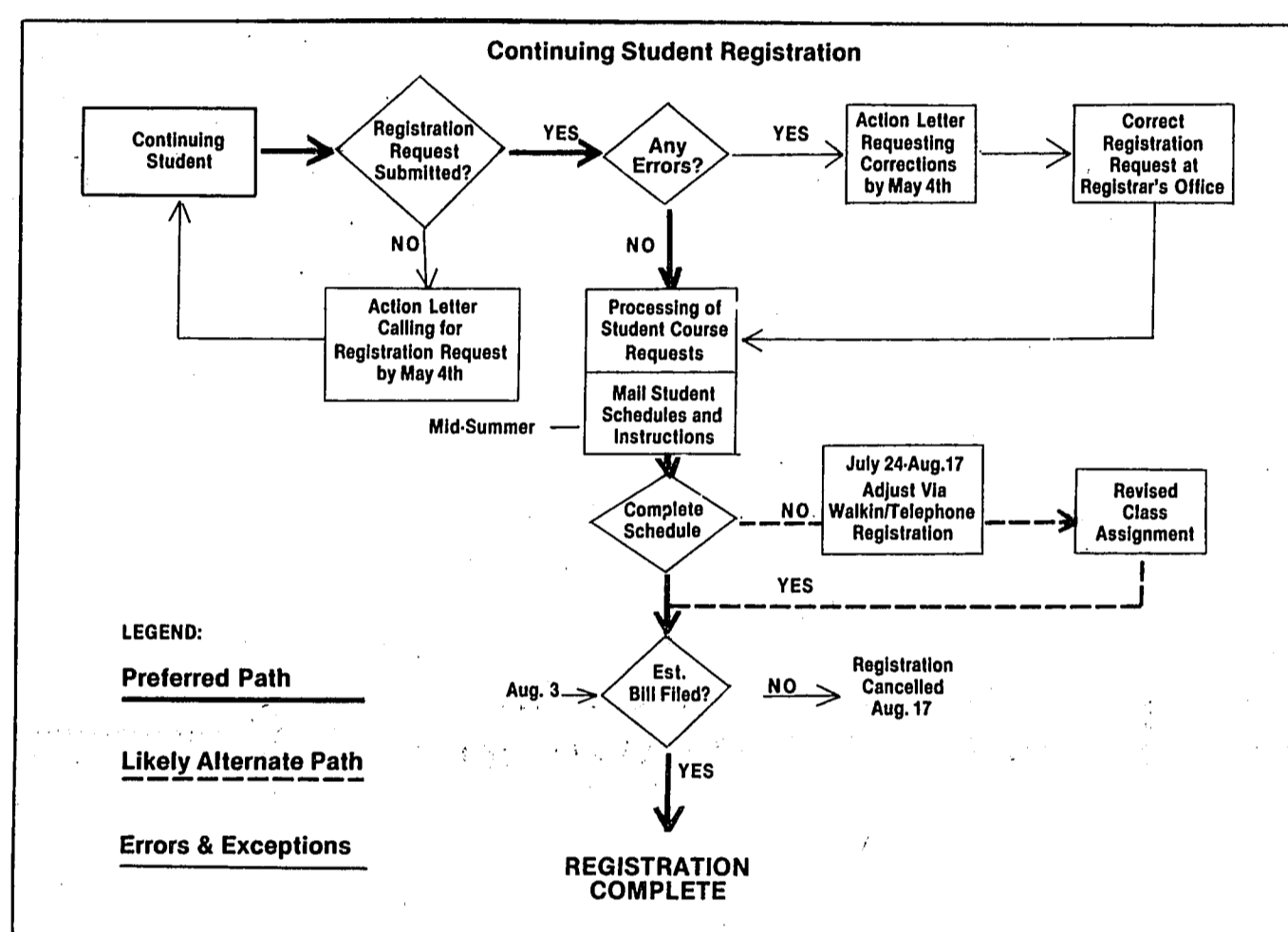
academic progress monitor regarding financial aid; 4) textbook ordering; 5) class scheduling; 6) final exam scheduling; 7) an on-line housing assignment system, and finally, 8) the on-line registration system itself.

What is the New Registration Process?

Under the new system, there is no arena registration in the Intramural Building for continuing degree students. All continuing degree students will register by submitting a registration request scan form which is due by April 16, 1984. If effective, the new system will increase the percentage of complete schedules (which is currently

about 50%). Once a complete schedule is returned to the student, they need only to file their estimated bill and they are ready to begin classes in the Fall semester. For some students, however, there may be a need to take additional actions to complete their registration.

Here's How the New Registration Works



Students should complete the Registration Request Form for Fall Semester (bearing in mind that course priorities are assigned in the order that requests appear on the sheet). Students must specify 2 alternate courses on the form which may be used as substitute courses, if the 2 reference courses are unavailable.

If the schedule is "complete," the student only needs to file the estimated bill with the Bursar to complete registration.

If the schedule is not complete, schedule adjustments will be made from July 24 to August 17. Students have the option to adjust their schedule directly at University Park, or via telephone. The FALL SCHEDULE OF CLASSES AND BACCALAUREATE DEGREE CATALOGUE SHOULD BE TAKEN TO STUDENTS' SUMMER RESIDENCES.

The Drop/Add Procedure

The AIS System's Drop/Add Procedure is much more convenient for students in that it eliminates running all over campus to complete a drop/add transaction.

in any Departmental office or in the office where they are adding the course.

Students add courses at the Departmental office offering the course. This will be done by a computer terminal operator in the department. Students may drop a course through a terminal operator

Students should bring signed registration/schedule adjustment forms with them when requesting terminal operators to drop or add a course.

With each transaction made, a revised schedule will promptly be printed for the student for clarification.

Commonly asked questions on the computerized registration:

- 1. Q. Would a student lessen his/her chances of receiving original course requests by selecting alternate courses? A. NO. An alternate course will in no way jeopardize the students' chances of getting a preferred course. It is only if those preferred courses are simply not available that alternates are chosen.
2. Q. Are seniors who are planning to graduate at the end of the semester required to fill out alternates? A. NO.
3. Q. Can "alternates" be used for requesting different sections in a particular course, as well as in different courses? A. NO. The alternate request MUST be for a totally different course, because the computer automatically attempts to satisfy your course request with a different, suitable section.
4. Q. What is the definition of a "Complete Schedule"? A. For undergraduate students, a complete schedule is considered to be "at least 15 credits" for those students requesting 15 credits or more. Students desiring less than 15, must receive their specified amount in order for the schedule to be considered complete.
For graduate students, a complete schedule is considered to be 12 credits. Graduate students requesting less than 12 credits, must receive their specified amount in order for the schedule to be considered complete.
5. Q. How can these students who have normally registered, and then have changed their major, or are not permitted to pursue their major, alter their designated schedules? A. In order to adjust a schedule after the revisions deadline, the student must participate in the new drop/add process.
6. Q. Will the student need to operate the computer terminal? A. NO. In every case, students will hand something to or talk over the phone to a terminal operator, and the terminal operator, either a department person or one of our staff members, will operate the terminal.
Students will not have a hands-on situation, or be required to be familiar with a terminal's operation.

Information prepared by: USG Academic Assembly University Registrar Vice President for Academic Services