

You normally wouldn't expect to see a painted juggler or living dominos on the streets of State College — but the weekend of the Phi Psi 500 is no normal weekend.

The annual Phi Psi 500:

By PATRICIA HUNGERFORD
Collegian Staff Writer

What began with 24 runners in 1969 has become the 1,800-runner Phi Psi 500 that many students and area residents look forward to watching and participating in each year.

The April 17 race, sponsored by Phi Kappa Psi fraternity in cooperation with Schlitz Brewing Co., starts in front of the fraternity and includes five stops at different bars. The race is 1.1 miles long, and race participants must drink a 10-ounce glass of beer or soda at each of the five bars.

The five bars include: the Phyrst, 111 1/2 E. Beaver Ave., Rego's, 128 E. College Ave., the All-American Rathskeller, 108 S. Fugh St., the Shandygaff Saloon, 212 E. College Ave., and the Brewery, 233 E. Beaver Ave.

A popular event in the race is the Anything Goes competition. About half the

participants in the Phi Psi 500 are in this category in groups of 20 people or less, said Paul Martin, co-chairman of the race.

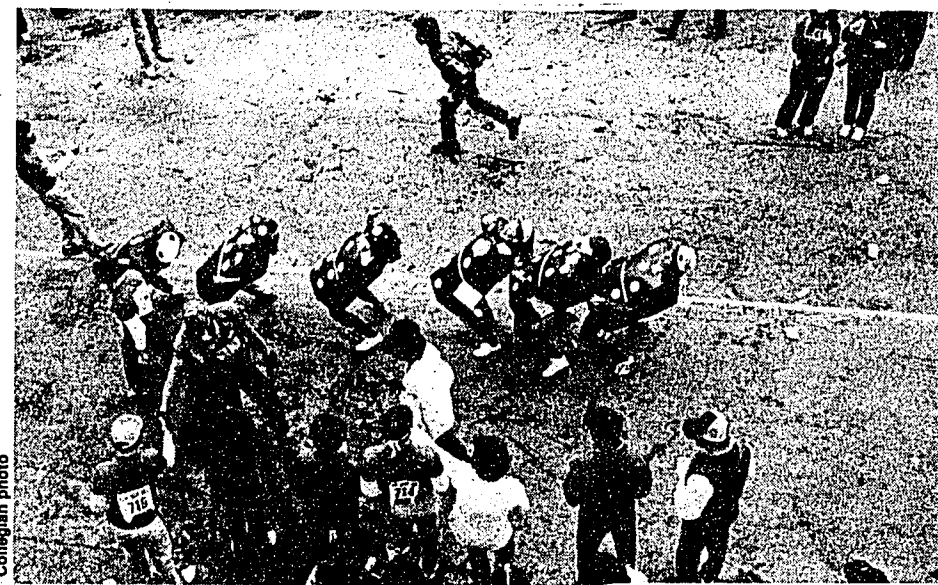
"People dress up in zany costumes," Martin said.

In the past, groups have dressed up as a pinball machine, a case of beer, roller skating nuns and a bowl of raisin bran. Last year's winners of the Anything Goes competition dressed as the Hare Krishna "World Renowned High School Marching Band."

Participants in this division are not timed for the race but are judged on their costumes, he said.

"The Anything Goes category adds a parade-type atmosphere to the race," he said, and many parents in the community bring their children just to see the funny costumes.

Other categories in the race include: fraternity, independent, masters, women, team, sorority relay and community relay. These events are timed, but only about 100



Running, drinking for charity

to 125 people are really serious about running for time, Martin said.

The masters category is for participants more than 35 years old.

Checkers will be in each bar making sure the runners drink all their beer or soda, Martin said. If the runner spills too much beer or soda, the checker will tell him to drink another. If the second drink is spilled also the runner will be disqualified.

The race starts at noon and will end at 4:30. Registration, held in the HUB basement, begins April 5 and ends April 15. The registration fee for individuals is \$12.

Fees for the group events are as follows: team, \$35; community relay, \$55; sorority relay, \$35; and anything goes, \$12 for the first runner and \$11 for each additional runner, with a limit of 20 runners. Each participant in the Phi Psi 500 will receive a T-shirt.

Participants must carry five quarters to pay for their beer at each bar along the race route. Participants must be at least 21

years old, and proof of age is required.

One-hundred student marshals will be placed along the route. The future of the Phi Psi depends on the crowd's behavior, said Doug Laderer, co-chairman of the race.

The event has run smoothly for the past two years and organizers would like to see it continue to do so, Laderer said.

From the race's proceeds, \$1,000 will be donated to the Mount Nittany Conservancy, a group that owns the deed to the top third of Mount Nittany, Martin said.

The money will be used to spray the land against gypsy moths, he said.

The rest of the money will be donated to the Easter Seals Society of Centre County for therapy equipment used in direct patient care, he said.

"We always donate to a local charity so the people of the community can see the money working," Martin said.

Last year \$20,000 was donated to the Second Mile, he said.



A serious group of runners begin the Phi Psi 500, left, while an "Anything Goes" participant, above, does... well... anything.

gnomon copy

Thesis & Resume Quality Xerox®
Regular Xerox® & Offset Copies

Gnomon offers you:

- ★ While-you-wait service on most orders, including thesis work.
- ★ Reduced Rates for orders left overnight
- ★ Competitive rates
- ★ High quality Xeroxing
- ★ Offset copies
- ★ Binding & laminating service
- ★ A wide range of paper

Mon. - Fri. 8 - 9 130 W. College Ave.
Sat. 9 - 5 State College, PA
Sun. 5 - 9 237-1111

Elby's
**State College
Inn**

84 Deluxe Rooms

- Conference Rooms
- Color TV, H.B.O.
- Reasonable Rates
- Cocktail Lounge

1661 South Atherton
State College, PA
237-2500



For Him: Full Tuxedo Service
Rental or Purchase
After Six — Lord West
Top Hats, Canes,
Gloves, Shoes

For Her: Dressy Dresses
Formals
Bridal Gowns
Shoes & Accessories
Gunnex Sax Separates

Expert Alterations
Superb Selection
Personal Service

Member National Bridal Service

Browse for Bargains in our Budget Shoppe Register for Selection as Diamond Bride of the Season
101 East Main St. NWE 10-9
614-466-7314 TTS 10-5

ON THE DIAMOND



Bells's Greek Pizza

Sunday — Thursday
11:00 a.m. — 1:00 a.m.
Friday & Saturday
11:00 a.m. — 2:00 a.m.

**Free delivery &
Free parking**

Starts 5:00 p.m. and now
delivery to Waupelani Drive too!

East College Ave.
237-8616