

Corner hits play key role in stickwomen's 6-1 win

By MARIA MARTINO
Daily Collegian Sports Writer
LEWISBURG — If the field hockey team has a secret weapon even more potent than the direct hit of Candy Finn, it's the scoring drive of Candy Finn on a perfectly-executed corner hit.

In their regular-season opener yesterday, the Lady Lions bombarded Bucknell goalie Betsy Doyle with 20 corner shots and beat the Bisons 6-1 in Lewisburg. Penn State totaled only nine corner hits in the five-game Lady Lion Invitational last weekend.

Finn, who holds all but one of Penn State's scoring records, tallied four of the goals, while Brenda Stauffer and Tracy Houston both went straight in for the other two scores.

Only two of Finn's tallies came from the corner hit. Penn State used the play often to pressure the Bisons. Left winger Sharon Tinucci expertly drove the ball from behind the end line into the goal circle, where Stauffer stopped the shot and fed the ball to Finn.

Though she sometimes used her stick to set up the play, Stauffer depended mostly on the handstop, a strategy the offense has concentrated on in both pre-season play and practice.

"Last year we got a lot of our goals off the corner shot," she said. "They're going to outlaw it next year, though, both at the national and international levels because it should really be a sure goal."

"Many of the Lady Lions' shots should have been sure goals, but the field conditions prevented that."

"I don't think people realize how vital the state the ground is," Penn State coach Gillian Ratray said. "We had been playing on the long, wet grass on a soft field at the invitational, and now suddenly it's short grass and a dry and

bumpy field. It took a while to adjust to it. Our reaction time was slow at first.

"I really was pleased with the corner shot. The times when we didn't get it was because of the bumps."

Stauffer said she preferred to look at the fast, hard field as an advantage for the Lady Lions' attack, adding that Tinucci's passes came sooner than usual, allowing more time for Finn to fire.

"It was really a challenge to get the ball down," Stauffer said. "I had to really concentrate, but I was keying in on it pretty well."

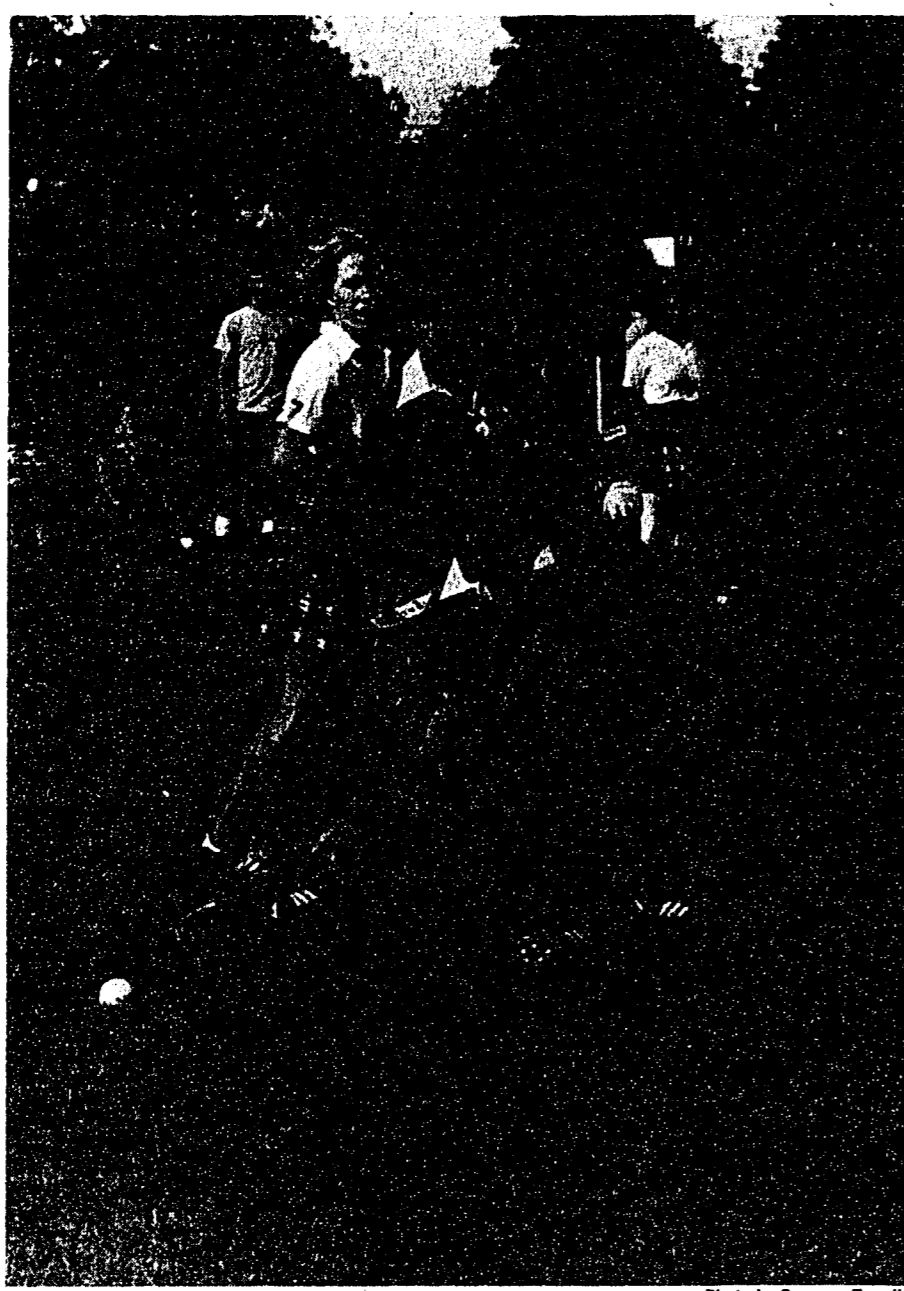
Stauffer's job usually involves covering the rolling ball with her hand to halt it, but due to the bumps on the field yesterday, she often had to reach waist-high to bring the ball down.

In fact, such a move led to Finn's second goal, a rising shot that went into the left side of the net. Her second corner hit score, however, followed a slow drive from Tinucci past a slow Bison defense. Finn hit the ankle-high shot with enough velocity to bounce it off a Bison defensive back's stick before scoring.

Finn credited the Lady Lions' passing game with the win, explaining that they wanted to get the ball out to the wings before bringing it into the circle. Likewise, Ratray commended her squad's play in the offensive circle and at mid-field.

"They were distributing the ball well across the field," she said. "We were trying to get that first shot off. We were not trying to shoot through them, but around them. I was quite pleased."

Stauffer was also pleased. After consistently hustling and hitting the post several times with shots, she found the net from about seven feet out while going across about seven feet and a dry and



Lady Lion Brenda Stauffer (reaching for ball) had one goal yesterday and Candy Finn (behind Stauffer in dark jersey) had four in Penn State's 6-1 win over Bucknell at Lewisburg. Photo by Suzanne Tynan

Single goal is victory enough for Bucknell

By TOM SARELL
Daily Collegian Sports Writer
LEWISBURG — Most people who attend Penn State or live in this Happy Valley are spoiled rotten when it comes to athletics.

Because the field hockey team has an exceptional win-loss record, it has been a long time since Penn State fans have seen a 6-1 loss and been happy to score the one, like Bucknell fans were in their loss to the Lady Lions yesterday in Lewisburg.

"We were pleased with our efforts," Bison left link Jeanne Minahan said. "They play on a different level. We, of course, are Division II. We had trouble generating some kind of attack, but we were pleased with our effort."

The Lady Lions play on a level just above all their opponents. That is why they were national champions last year, and with the team they have this year, they have a shot at doing it again. But they had to win that first game.

"(Finn) had a bullet," she said. "She cracked my stick on one. When they hit it wide (of the goal), that's a victory for us."

Bucknell's finest moment came at 14:23 in the second half when the Bisons' Ann Kennedy passed off to teammate Maria Procopio, who dropped it off into the net. It was only Bucknell's second shot on goal.

"It was a clean goal," Ratray said. "It was deflected clear across the circle. (Penn State goalie) Lynn (Mattson) was blocked. She didn't see it or react to it."

For a team that had fans who cheered each time the Bisons cleared the ball over the midline, a team that had not scored on Penn State since 1977, the goal was a godsend.

challenged Rocco Tanner and fourth-seeded Jimmy Connors crushed Eliot Teltscher yesterday to advance into the semifinals of the U.S. Open tennis championships.

Borg, who has not won America's premiere tennis event in 10 attempts, captured his quarterfinal match 7-6, 6-3, 6-7, 7-6 after Tanner had fought off three match points. He will meet Connors, who posted a 6-3, 6-1, 6-2 victory over the eight-seeded Teltscher.

In the other semifinal, top-seeded John McEnroe will face No.15 Vitas Gerulaitis.

The women's semifinals, scheduled for Friday, will pit No. 1 Chris Evert Lloyd against No. 4 Martina Navratilova, and No. 3 Tracy Austin against No. 11 Barbara Potter.

"This was my best match so far in the tournament," said Borg, who is seeded second here.

Tanner had difficulty holding his serve in the opening set, while the ninth-seeded left-hander never won more than one point in any game against Borg's serve. With the exception of the match-opening game, Borg took Tanner to deuce every time the left-hander served.

Borg, Connors advance in Open

NEW YORK (AP) — Sweden's Bjorn Borg, the tournament's No.2 seed, outlasted Rocco Tanner and fourth-seeded Jimmy Connors crushed Eliot Teltscher yesterday to advance into the semifinals of the U.S. Open tennis championships.

In the other semifinal, top-seeded John McEnroe will face No.15 Vitas Gerulaitis.

The women's semifinals, scheduled for Friday, will pit No. 1 Chris Evert Lloyd against No. 4 Martina Navratilova, and No. 3 Tracy Austin against No. 11 Barbara Potter.

"This was my best match so far in the tournament," said Borg, who is seeded second here.

Tanner had difficulty holding his serve in the opening set, while the ninth-seeded left-hander never won more than one point in any game against Borg's serve. With the exception of the match-opening game, Borg took Tanner to deuce every time the left-hander served.



Jimmy Connors defeated Eliot Teltscher yesterday in a quarterfinal round match of the U.S. Open in Flushing Meadows.

Irish open season with LSU

By HERSCHEL NISSENSON
AP Sports Writer
Irish Coach Bo Schembechler doesn't think the Wolverines deserve to be ranked No.1. But he also says he appears to have a typical Michigan squad. "That should mean something in the neighborhood of... Michigan 27-0."

Gerry Faust hasn't coached a game at Notre Dame yet, but he's already being mentioned in the same breath with other Fighting Irish greats. He's not making any predictions about his debut tomorrow against Louisiana State, however, even though the Irish are 14-point favorites.

I see four players can run and throw and tackle as well as the LSU players. "I feel like we should have a good football team this year, but I'll know a lot more Saturday when I'm on the field and I can see how we measure up."

Other games:
Tennessee at Southern California (18): After losing to Georgia 44-0, Tennessee might be volunteering for another whipping. . . Southern Cal 35-6.

California at Georgia (17): "Georgia's defense is designed to stop the run, and California virtually ignores the ground game," said Bulldogs' coach Vince Dooley. With Herschel Walker around, a ground game isn't ignored by... Georgia 24-17.

Penn State 56, Cincinnati 0; Holy Cross 17, Boston University 13; Navy 21, The Citadel 13; Rutgers (13 1/2) 20, Colgate 14; Syracuse (21 1/2) 24, Temple 18; Florida State (20) 21, Memphis State 10; Florida 41, Furman 0; West Virginia 27, Virginia (2) 20; North Carolina State (4 1/2) 27, Wake Forest 20.

Michigan (favored by 19) at Wisconsin: Coach Bo Schembechler doesn't think the Wolverines deserve to be ranked No.1. But he also says he appears to have a typical Michigan squad. "That should mean something in the neighborhood of... Michigan 27-0."

Rice at Texas (21): Both teams are coming off surprising seasons. Texas was only 7-5. Rice actually managed 5-6. For coach Fred Akers' sake, the Longhorns had better do better. . . Texas 35-10.

UCLA (6 1/2) at Arizona: The Bruins were 6-0 coming into this game last year but lost 23-17. They are unbeaten again (0-0) and out for revenge. . . UCLA 24-17.

Stanford (1) at Purdue: If John Elway were a year older and Mark Herrmann a year younger, this could have been a classic aerial show. Elway by himself ain't too shabby. . . Stanford 28-17.

Other games:
Penn State 56, Cincinnati 0; Holy Cross 17, Boston University 13; Navy 21, The Citadel 13; Rutgers (13 1/2) 20, Colgate 14; Syracuse (21 1/2) 24, Temple 18; Florida State (20) 21, Memphis State 10; Florida 41, Furman 0; West Virginia 27, Virginia (2) 20; North Carolina State (4 1/2) 27, Wake Forest 20.

Other games:
Penn State 56, Cincinnati 0; Holy Cross 17, Boston University 13; Navy 21, The Citadel 13; Rutgers (13 1/2) 20, Colgate 14; Syracuse (21 1/2) 24, Temple 18; Florida State (20) 21, Memphis State 10; Florida 41, Furman 0; West Virginia 27, Virginia (2) 20; North Carolina State (4 1/2) 27, Wake Forest 20.

Gatsby's
120 West College 271-4330
THE CLOCKS
Friday, September 11th
9 p.m.
Open Every Friday Night

THE CABOOSE BAR
AT THE TRAIN STATION
Very Conducive to
friendliness & mashing
BE HAPPY HOURS
2:00 PM - 6:00
EVERY FRIDAY
JUNCTION OF COLLEGE & GARNER STATE COLLEGE.
Plenty of parking behind the STATION - 11 am - 2 am daily.

**Friends sometimes question
your taste in movies.
But they'll see them with you anyway.**



Löwenbräu. Here's to good friends.
It sounded fantastic in the newspaper. But only to you. Still, you had to see it, and with a little arm-twisting your friends agreed to see it too.
You've already heard a barrage of jokes about your taste in movies since the curtain came down. And, knowing your friends, it'll go on for weeks.
So, to make it up to them, and show them your taste isn't bad in everything, you do something a little special. Tonight, let it be Löwenbräu.

Innovative Dating
Creating a new concept in dating for unmarried adults living in Central Pennsylvania
Memberships start at \$15.00 for women, \$18.00 for men.
Innovative Dating
(814) 238-4200
P. O. Box 737, State College, Pa. 16801
Trip a journalist today.

LAMPS to light all those late nights
CLOCKS to check how late it is
MIRRORS to see how bad you look
Free \$5 magazine rack with \$25 purchase (while they last)
Next door to Uncle Eli's
127 E. Beaver
234-1828
Mastercard/Visa/American Express
Daily 10-5:30
Thurs. till 9
lights today's lifestyle

Scoops . . .
and scoops of homemade ice cream under tempting toppings . . .
Sumptuous ice cream sodas . . . Smooth, creamy milk shakes . . .
Savory french pastries . . . Soothing espresso coffee and herb tea.
Old Fashioned Ice Cream
Parlor & Soda Bar
Located Behind the Diner • 126 W. College Ave.

Wilson's
234 E. COLLEGE AVE.
UNDER MID-STATE BANK
HOURS 9:00-5:30 DAILY
THURS & FRI 9:00-9:00
SAT 9:00-5:00
McAllister St.
College Ave.
Wilson's Under Bank
Mid-State Bank
20% OFF EVERYTHING STORE-WIDE
• JEANS
• ATHLETIC FOOTWEAR
• SPORTING GOODS
FINEST NAMES
LOWEST PRICES
VISA
MasterCard

CONSIDER...
✓ Complete In-House Silkscreen Shop
✓ Heat-Transfer Operation
✓ Complete Sewn-On letter Program
✓ Large Selection of Sportswear on Hand to Choose from
✓ Group Discounts
✓ Service
AND YOU'LL CHOOSE...
BALFOUR HOUSE
For All Your Custom Sportswear Needs
• GROUPS
• DORM FLOORS
• INTRAMURAL
• INDIVIDUAL
BALFOUR HOUSE
326 E. College Ave.