

Helsel's trick triggers intensity, softball team sweeps twinbill

By TOM SAKELL, Daily Collegian Sports Writer

More important than taking both games of yesterday's double-header at Lock Haven and more important than collecting 15 hits in two games was that the softball team may have finally found the intensity it has been sorely lacking all season.

Penn State's 5-3 and 6-0 victories over Division III rival Lock Haven (3-4) gave the Lady Lions their second double-header sweep of the season.

During the past two weeks, the Lady Lions (6-5) had four playing dates rained out and have even less practices. So when they finally did play — against powerhouse Rutgers — the team seemed washed out, too.

The Lady Lions lost that double-header, the team lost its poise and coach Dennis Helsel was losing his mind trying to figure a way to instill a confident, winning attitude.

"After 10 games," he said this weekend, "we have not progressed mentally like we need to. We're not thinking softball all the time. We're not close. How do I make them believe?"

He may have done it yesterday. He kept two starters out of the starting lineup and used two players, a freshman and a junior who do not usually see much defensive playing time, in their places. It was a risky move that could have made the team's morale problem even worse, but Helsel said he thinks it may have worked.

"As the players came off the field each inning, they (the benched starters) were the first ones off the bench, telling them what they were doing wrong," he said. "I have to give them a lot of credit. They could have sulked, but they didn't. They were the catalysts."

"It was a beautiful thing for a coach to watch."

The two starters got into the first game in the fifth inning and started the second game, so apparently all was forgiven. And once that was settled, the Lady Lions were able to concentrate on playing softball.

Six different Penn State players got a hit in the first game, and Christy Phillips had two RBIs. The bats came alive with two outs in the fourth inning with Lock Haven leading 3-1. The Lady Lions usual

ly have trouble when they are trailing, but they were able to score four runs to take the lead in one of their few two-out rallies of the season.

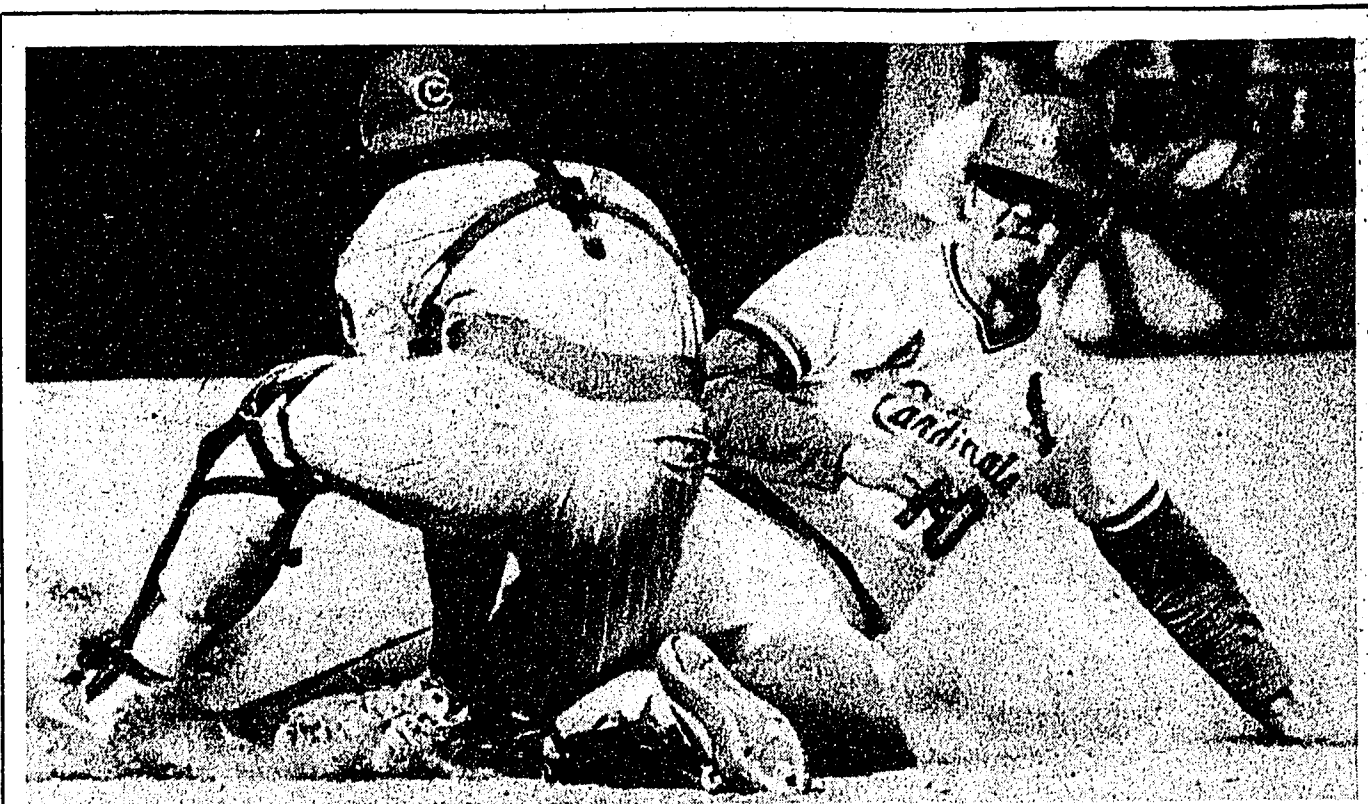
Freshman Betty Jo Maulle (1-0) got her first collegiate win when she relieved starter Marlin Halas (0-1). Rayne Yori (3-3), normally a starter, took over in the sixth inning.

In the second game, Brenda Frey (3-1) recorded her second shutout of the season, but the real heroes were the Lady Lions hitters, who gathered nine hits. Mary Ann Cremo had three hits and Nancy Lauer had a double and a triple. Margaret Baker collected two hits and Michelle Turk banged out a triple for a pair of RBIs.

But the biggest hitter may have been a player who did not have any hits.

Phillips hit a long shot the right fielder lost in the sun. Phillips circled the bases and scored — that's usually called a home run — but the Lock Haven scorer gave the right fielder an error. Not a single with a three-base error but a four-base error.

"It was a line shot over her head," Helsel said.



Dead bird
Chicago Cubs catcher Jody Davis (left) tags out St. Louis' Ken Oberkfell as he slides home in the second inning of the Cubs-Cardinals game yesterday at Busch Stadium. St. Louis won, 8-0.

ΦM
We'll be riding high in the Chariot of the gods. Get Psyched!
Love,
The AKL's

SURE there are bigger pizzas than **BELL'S GREEK PIZZA** but there are no better pizzas.
538 E. College 237-8616

Zeno's Corner of College & Allen

HAPPY HOURS MONDAY THRU FRIDAY 3-7 p.m.

Magnificent Mondays

Canadian Night 9-2 a.m.

Collins Night **TUESDAY** any Collins of your choice 9-2 a.m. **LOWEST PRICE IN TOWN**

KAMIKAZI **WEDNESDAY** 2 for 1 NIGHT **PITCHER NIGHT**

THURSDAY Our price can't be beat!

HAPPY HOURS **SUNDAY** 9-2 a.m. at **Zeno's**

SUPER COUPON!

GALLON SIZE **Clorox Bleach** 69¢

SUPER COUPON!

WHITE/ASST. (4" OFF LABEL) **Scott Tissue** 3\$1

SUPER COUPON!

KEEBLER **Zesta Salines** 49¢

Our P's mean low prices

A&P

Our Q's mean high quality

THE FARM **RUSSET Baking Potatoes** 188 10-lb. bag

Meat Specials **A&P PURE Ground Beef** 129 3-lb. tube

Meat Specials **COUNTRY PRIDE MIXED Fryer Parts** 49¢ lb.

CONTADINA **Tomato Sauce** 489¢ 8-oz. cans

CONTADINA **Tomato Puree** 25-oz. 79¢

Meat Specials **Country Pride Sliced Bacon** 129 1-lb. pkg.

Meat Specials **Country Pride Sliced Bacon** 129 1-lb. pkg.

Meat Specials **Country Pride Sliced Bacon** 129 1-lb. pkg.

Meat Specials **Country Pride Sliced Bacon** 129 1-lb. pkg.

Meat Specials **Country Pride Sliced Bacon** 129 1-lb. pkg.

Meat Specials **Country Pride Sliced Bacon** 129 1-lb. pkg.

Meat Specials **Country Pride Sliced Bacon** 129 1-lb. pkg.

the daily scoreboard

Women's lacrosse poll

1. Maryland 8-0 (5) 94
2. PENN STATE 6-0 (5) 93
3. Harvard 9-0 79
4. Ursinus 9-2 73
5. Massachusetts 4-2 48
6. Pennsylvania 6-4 40
7. Temple 8-4 39
8. James Madison 9-2 34
9. Virginia 8-1 3-1 24
10. William and Mary 5-4 19

Men's lacrosse poll

1. Johns Hopkins 150
2. North Carolina 140
3. Syracuse 127
4. Virginia 123
5. Massachusetts 110
6. Navy 92
7. Maryland-Baltimore County 86
8. Maryland 76
9. Army 71
10. North Carolina State 69
11. PENN STATE 30
12. Pennsylvania 28
13. Washington and Lee 15
14. Rutgers 15
15. Cornell 11

Women's lacrosse

Lock Haven 1-6
First Half — 1. PSU, Gray 8 (Fins), 20-10, 3. PSU, Thompson 18 (Fins), 14-20, 3. PSU, Howe 11, 12-20, 4. PSU, Finn 18, 9-15, 5. PSU, Finn 12, 7-20, 6. PSU, Gray 19, 6-23, 7. Lock Haven, Laird, 6-20, 8. PSU, Thompson 18 (Hoke), 3-20, 9. PSU, Finn 18, 27-24, 10. Lock Haven, Kellert, 21-20, 11. PSU, Thompson 20 (Hoke), 22-20, 12. Lock Haven, Miller, 19-16, 13. Lock Haven, Kellert, 6-10, 14. Lock Haven, Canavan, 43-26, 15. PSU, Finn 20, 14-16, 16. Lock Haven, Kellert, 43-26, 17. PSU, Finn 20, 14-16, 18. Lock Haven, 5-6-21, PSU, 21-18-23, Saves — Lock Haven, Fluck, 6-6-14; PSU, Logan, 24-6-10.

Men's lacrosse

PHILADELPHIA (165)
Erving 8 2-25, C Jones 2 2-4, Dawkins 5 6-0 10, Hollins 5 6-0 10, Cherkas 4 6-8, B Jones 7 3-11, Toney 4 9-20, Mc 6-6, Richardson 8 1-1, Tostes 40 20-20.

Transactions

Yesterday's Sports Transactions

BASEBALL
American League
NEW YORK YANKEES — Recalled Steve Balboni, first baseman, from Columbus of the International League. Returned Marshall Brant, first baseman, to Columbus.

National League
NEW YORK METS — Placed Tim Lincey, pitcher, on the 60-day disabled list retroactive to April 16.

Robinson moved to bullpen

PITTSBURGH (AP) — Pitcher Don Robinson, bothered by yet another arm problem, has been moved from the Pittsburgh Pirates' starting rotation to the bullpen.

Robinson, a former Cerezo-Kenova (W. Va.) High School athlete, has been bothered by arm and shoulder problems since 1979 — the season after he compiled a 14-6 record as a rookie. He split his pitching time between the starting rotation and the bullpen during the 1979 and 1980 seasons.

Robinson required post-season shoulder surgery in 1979 but still was bothered by arm ailments in 1980. He pitched in a winter league this year in an effort to regain the form he had as a rookie.

He left the Pirates' spring training camp in Florida as a member of the starting rotation but is now back in the bullpen.

"Yeah, I did something to my arm again," Robinson said. "It's something like bicep tendinitis, but it's not serious."

Robinson's spot in the starting rotation has been taken by Rod Scurry, who teamed with Eddie Solomon to pitch a five-hitter in the Pirates' 2-0 victory over Houston on Sunday.

In his only game this season, Robinson allowed four runs and nine hits in six innings in a 5-3 loss to Philadelphia last Thursday.

"It was OK," Robinson said. "We had a couple of mental errors that cost me a couple of runs, but besides that it was all right. I threw well."

Robinson, 23, isn't upset about his move to the bullpen.

"(Manager) Chuck (Tanzer) said he wants to use me just like he did in the (1979) playoffs and World Series."

ATTENTION PRE-MED STUDENTS

De Olde College Diner

Breakfast Specials
Served 7 Days a Week from 6 a.m. to 11 a.m.

- PENN STATE CONTINENTAL — Large Glass of OUR OWN Citrus Juice, 2 slices of OUR OWN Sourdough Bread Toasted or Regular Toast, Butter & Jelly (OUR OWN Honey Butter on Request .20)..... .99
- TRUE CONTINENTAL — OUR OWN Croissant or Brioche, Butter, Jam, Jelly or Marmalade, Cheddar Cheese and Fresh Apple Slices (OUR OWN Honey Butter on Request .20)..... .139
- FIRST PERIOD RUSH — Two Eggs, Fried or Scrambled, Home Fries and Two Slices of Toast, Butter & Jelly (OUR OWN Honey Butter on Request .20)..... .99
- TWO BY TWO — Two Eggs, Fried or Scrambled and Two Large Pancakes, Butter and Syrup..... .149
- SECOND PERIOD FEAST — Two Eggs, Fried or Scrambled, Home Fries, Bacon or Sausage and Two Slices Toast, Butter & Jelly (OUR OWN Honey Butter on Request .20)..... .169

ALSO FEATURING BROWN-BAG-LUNCH-TO-GO — only \$1.95
Open 24 Hours 126 W. College Ave.

AFTER EASTER SALE

20% OFF COATS

and SELECTIONS OF **SUITS and SPORTSWEAR**

The Carriage House
109 S. Pugh St.

alleyat
and Calder Way

EUROPE BY CAR
RENT or BUY **LOWEST PRICES** FOR STUDENTS, TEACHERS

EUROPE BY CAR
45 Rockefeller Plaza
New York, N.Y. 10020
Phone: (212) 581-3000
Mail this ad for Special Student/Teacher Tariff.

RENTAL, LEASE & PURCHASE
BUSINESS & YOUTH PASS

Special! at **The Scorpion** 232 W. Calder Way With **"Backseat Van Gogh"** tonite only pitcher special

Hear Ye! Hear Ye!

De Olde College Diner

Breakfast Specials
Served 7 Days a Week from 6 a.m. to 11 a.m.

- PENN STATE CONTINENTAL — Large Glass of OUR OWN Citrus Juice, 2 slices of OUR OWN Sourdough Bread Toasted or Regular Toast, Butter & Jelly (OUR OWN Honey Butter on Request .20)..... .99
- TRUE CONTINENTAL — OUR OWN Croissant or Brioche, Butter, Jam, Jelly or Marmalade, Cheddar Cheese and Fresh Apple Slices (OUR OWN Honey Butter on Request .20)..... .139
- FIRST PERIOD RUSH — Two Eggs, Fried or Scrambled, Home Fries and Two Slices of Toast, Butter & Jelly (OUR OWN Honey Butter on Request .20)..... .99
- TWO BY TWO — Two Eggs, Fried or Scrambled and Two Large Pancakes, Butter and Syrup..... .149
- SECOND PERIOD FEAST — Two Eggs, Fried or Scrambled, Home Fries, Bacon or Sausage and Two Slices Toast, Butter & Jelly (OUR OWN Honey Butter on Request .20)..... .169

ALSO FEATURING BROWN-BAG-LUNCH-TO-GO — only \$1.95
Open 24 Hours 126 W. College Ave.

TRAIN YARD CHICKEN

1/2 Spit Roasted Chicken 3.25 with choice of Potato and Station Baked rolls & butter.

Every Wednesday 4-9pm
at **THE TRAIN STATION**
A Railroad Eatery
Junction of College & Garner

You And I Love Roast Beef At Arby's!

See for yourself why Arby's IS America's Roast Beef, Yes Sir! Every sandwich is lean, trim, always delicious, always nutritious!

6 More Good Reasons To Visit America's Roast Beef. Yes Sir!

Any 2 Sandwiches from Arby's Menu Only \$2.50 Not valid with any other offer. Offer expires May 16, 1981. Limit: 10 in multiples of 2.	Any 2 Sandwiches from Arby's Menu Only \$2.50 Not valid with any other offer. Offer expires May 16, 1981. Limit: 10 in multiples of 2.	Any 2 Sandwiches from Arby's Menu Only \$2.50 Not valid with any other offer. Offer expires May 16, 1981. Limit: 10 in multiples of 2.
Any 2 Sandwiches from Arby's Menu Only \$2.50 Not valid with any other offer. Offer expires May 16, 1981. Limit: 10 in multiples of 2.	Any 2 Sandwiches from Arby's Menu Only \$2.50 Not valid with any other offer. Offer expires May 16, 1981. Limit: 10 in multiples of 2.	Any 2 Sandwiches from Arby's Menu Only \$2.50 Not valid with any other offer. Offer expires May 16, 1981. Limit: 10 in multiples of 2.