

the daily sports

USC still No. 1 in poll Lions jump notch to sixth

By the Associated Press
Top-ranked Southern California widened its lead over Alabama in The Associated Press college football poll yesterday while Notre Dame jumped from ninth place to fifth following its 12-10 upset of Michigan.

The less-dropped Michigan from sixth place to 11th.

Oklahoma and Texas held onto the third and fourth positions — the first four teams have been the same since the preseason poll — followed by Notre Dame, Penn State, Nebraska, Michigan State, Missouri and Houston.

Southern Cal. a 42-5 winner over Oregon State, received 49 first-place votes and 1,227 of a possible 1,240 points from a nationwide panel of 62 sportswriters and broadcasters.

Alabama, which didn't play over the weekend, received 12 first-place votes and 1,153 points. Last week, USC led in first-place votes by 45-14 and in points by 1,222-1,172.

Oklahoma, a 21-6 victor over Iowa, received 1,017 points while Texas, which

doesn't open until Saturday, received the other first-place vote and 976 points.

Notre Dame accumulated 933 points, barely edging Penn State, which received 927 points following a 45-10 rout of Rutgers and climbed from seventh to sixth. Purdue, which lost to UCLA 31-21, slipped from fifth to 17th.

Nebraska rose from eighth to seventh with 815 points by defeating Utah State 35-14 and Michigan State went from 10th to eighth with 741 points by hammering Oregon 41-17.

Missouri and Houston cracked the Top Ten for the first time this season, moving into the ninth and 10th spots. Missouri, which had been 11th, turned back Illinois 14-6 while Houston, 13th last week, edged Florida 14-10. Point-wise, Missouri had 613 to 578 for Houston.

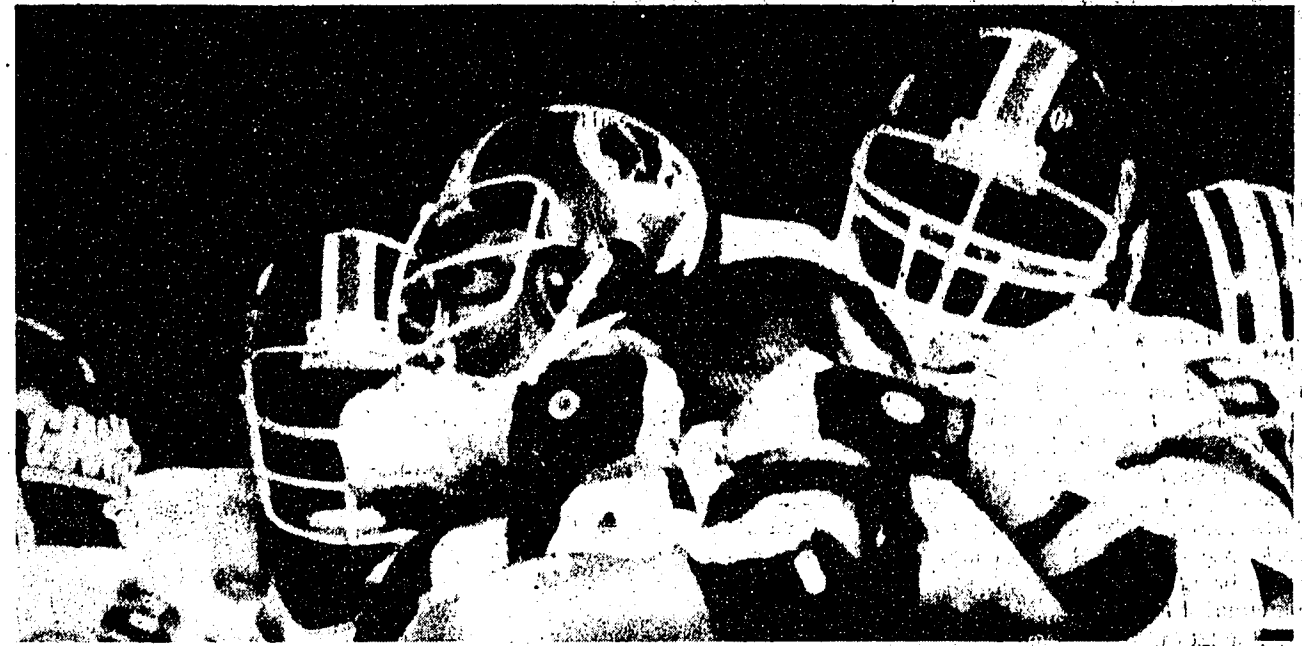
This week's Second Ten consists of Michigan, Washington, Pitt, Florida State, Arkansas, Ohio State, Purdue, Southern Methodist, North Carolina State and UCLA.

Last week, it was Michigan State.

Top twenty

The Top Twenty teams in The Associated Press college football poll, with first place votes in parentheses, records and total points. Points based on 20-19-18-17-16-15-14-13-12-11-10-9-8-7-6-5-4-3-2-1.

1. Southern California	2,040
2. Alabama	1,153
3. Oklahoma	1,017
4. Texas	976
5. Notre Dame	933
6. Penn State	927
7. Nebraska	815
8. Michigan State	741
9. Missouri	613
10. Houston	578
11. Michigan	527
12. Washington	514
13. Florida State	506
14. Florida State	506
15. Arkansas	384
16. Ohio State	384
17. Purdue	324
18. Southern Methodist	294
19. North Carolina State	280
20. UCLA	192



Washington's John Higgins is grabbed around the neck by a frustrated Giant defender in last night's football game. The Redskins blanked New York, 27-0.

Giants' woes mount after loss

WASHINGTON (AP) — Defensive tackle Karl Lorch returned an intercepted pass 31 yards for a touchdown and Joe Theismann threw and ran for two more scores last night as the Washington Redskins defeated the winless, error-prone New York Giants 27-0 in a nationally televised National Football League game.

Lorch's touchdowns came in the second quarter after he picked off a 4-yard touchdown pass with nine seconds remaining in the half to eliminate an 80-yard drive on which Brian Kelley and Ray Rhodes were penalized for running into the kicker and Gary Jeter was called for unnecessary roughness. The Rhodes penalty came with 16 seconds remaining and the Redskins at fourth down.

Theismann hit Clarence Harmon on a 4-yard touchdown pass with nine seconds remaining in the half to eliminate an 80-yard drive on which Brian Kelley and Ray Rhodes were penalized for running into the kicker and Gary Jeter was called for unnecessary roughness. The Rhodes penalty came with 16 seconds remaining and the Redskins at fourth down.

Fieldwomen ready to start trek to nationals

By JUSTIN CATAÑOSO
Daily Collegian Sports Writer

A successful preseason has been completed and an abundance of talent unveiled. At long last, the women's field hockey team takes its first steps on the road that will hopefully lead them to Washington, D.C. and the national tournament.

The road to Washington is a long and difficult one and at 3:30 this afternoon, the Lady Lions, who are ranked second nationally, make their first stop in Lewisburg to hook sticks with Bucknell.

"The girls are raring to go for some hockey," Penn State coach Gillian Rattray said. "We've had a lot of time to work on set plays and conditioning, but now the girls are ready to play something that counts."

In the team's only competition of the season — the abbreviated scrimmages in the Lady Lion Invitational — Penn State swept through the two-day event taking five victories and not allowing a single goal thanks to a swarming defense and flawless goaltending by junior Jeanne Fissinger.

But that was nine days ago and in the meantime, the team has had no one else to play but themselves.

"We were kind of letting up after scrimmaging the I.V. for so long," senior sweeper Wendy Emery said. "After a while you get to know their moves and stop looking for things. This isn't good because in a game you have to be alert all the time."

To create more of a competitive at-



Sophomore forward Jan Snyder (16), charging to get back to defense, will lead the highly-touted Lady Lions against Bucknell at 3:30 this afternoon in Lewisburg. It's the opening game for both teams.

EVERY TUESDAY IS "BURRITO TUESDAY"
DELICIOUS BEEF, BEANS OR A COMBINATION OF BOTH, ROLLED WITH GOLDEN CHEDDAR CHEESE, SAUCE AND ONIONS, IN A SOFT FLOWER SHELL.
BEAN reg. 85¢ TODAY 75¢
COMBO reg. \$1.10 TODAY 85¢
131 S. Garner St.
Phone for take-out 234-4725

There will be a meeting of all Journalism, Speech-Broadcast and Theatre-Arts Majors who are interested in studying Mass Communications Spring Term 1980 in Manchester, England for 9 credits.
Wednesday, Sept. 19, 1979
in Room 2 Sparks at 4:00 p.m.

TUTOR

Want to help out other students? Want to cash in on courses you know well? Having troubles with classes? To be a tutor or to find one, stop by Academic Assembly at 203-A HUB or call us.

ACADEMIC ASSEMBLY 865-9111

HAVE YOU HAD MONO?

(In the last 3 months)

Sera Tec Biologicals is in need of donors who have made antibodies to mononucleosis. We will pay \$50.00 per donation to anybody who passes the antibody level test.
Call 237-5761

Want To Know Some Background On Courses? Like To Know What You're Registering For? Then

COURSE SELECTOR

May Give You Some Answers!
Stop By 203-A HUB To Pick One Up!

ACADEMIC ASSEMBLY 865-9111

PEDRO'S

"TWO ENCHILADAS, BEANS AND SPANISH RICE" SPECIAL

WHAT'S AN ENCHILADA? DELICIOUS, MILDLY SEASONED BEEF WITH CHEESE ROLLED IN A CORN TORTILLA.

WHAT'S SPANISH RICE? OUR FAMOUS RECIPE, THE FINEST RICE COOKED AND DELICATELY SEASONED WITH ONION, MILD PEPPERS, TOMATO, AND SPICES.

SERVED WITH CHIPS AND CHOICE OF SAUCE REG. \$2.65 TODAY ONLY \$2.19 (or try our daily special: taco, hot chili, and corn chips for \$1.09)

131 S. GARNER ST. PHONE FOR TAKE OUT 234-4725

Technics

AT UNHEARD OF PRICES

<p>SA-200 FM/AM stereo receiver. 25 watts per channel, minimum RMS into 8 ohms, from 20-20,000 Hz, with no more than 0.04% total harmonic distortion. OCL power amp with current-mirror loaded differential stage. Phono signal-to-noise ratio 90 dB re 10 mV. MOS FET FM front end. Flat group delay IF filters. Phase locked loop MPX stage. Main and remote speaker connections. Tape monitor function. Dual-tuning meter. Simulated wood cabinet.</p> <p>LIST PRICE \$240 \$147</p>	<p>SA-300 FM/AM stereo receiver. 35 watts per channel, minimum RMS into 8 ohms, from 20-20,000 Hz, with no more than 0.04% total harmonic distortion. OCL power amp with current-mirror loaded differential stage. Phono signal-to-noise ratio 90 dB re 10 mV. MOS FET FM front end. Flat group delay IF filters. Phase locked loop MPX stage. High filter switch. Main and remote speaker connections. Two tape monitors with 1-2 dubbing. Dual-tuning meter. Simulated wood cabinet.</p> <p>LIST PRICE \$300 \$217</p>	<p>SA-400 FM/AM stereo receiver. 45 watts per channel, minimum RMS into 8 ohms, from 20-20,000 Hz, with no more than 0.04% total harmonic distortion. Pure-complementary OCL power amp with current-mirror loaded differential stage. Phono signal-to-noise ratio 90 dB re 10 mV. MOS FET FM front end. Flat group delay IF filters. Phase locked loop MPX stage. Low and high filters. 2-way tape dubbing. Signal-strength and center-of-channel tuning meters. Main and remote speaker connections. Simulated wood cabinet.</p> <p>LIST PRICE \$360 \$247</p>
<p>SL-B2 Belt-drive semi-automatic turntable. FG (frequency generator) servo-controlled DC motor.</p> <p>LIST PRICE \$200 \$107</p>	<p>SL-D2 Direct drive semi-automatic turntable. Integral rotor/platter structure and B-FG servo system contribute to excellent rotational stability.</p> <p>LIST PRICE \$200 \$127</p>	<p>SL-Q2 Quartz-locked, direct drive, semi-automatic turntable. Quartz-locked FG servo control gives high torque, fast speed correction, excellent speed stability.</p> <p>LIST PRICE \$200 \$157</p>

SH-510 Rack — 3 compartments, two adjustable shelves, record storage compartment with doors.
LIST PRICE \$130
\$57

LUNCH SPECIAL

Mon-Sat 11:00-2:00 P.M.

8 oz N.Y. Prime STRIP STEAK

broiled and served with mushrooms & wine sauce plus salad & vegetable only

\$4.25

with this coupon (good through Sept. 26th) at State College's newest and most authentic Italian Ristorante.

THE BIG ROCK

At THE ADDRESS BOX

129 S. PUGH STREET

Introducing The First Intelligent Birdbrain! The Nittony Owl.

At THE ADDRESS BOX

129 S. PUGH STREET

Let Us Help Quench Your Thirst

we feature 35 different brands of domestic and imported beers.

Monday-Friday noon-2 am
Saturday 10 am-2 am
Sunday 1 pm-10 pm

(formerly the Downtown Bottle Shop)
129 S. PUGH STREET

La Bella Vita

119 S. Atherton St. Between College Ave. & Beaver Telephone 237-6191 "Under the Red Canopy"

WUV'S

STACK OF BURGERS AND FRIES!

Warm-up Pick-me-up Courage-up Fill-'er-up

3 BURGERS and FRIES 2.50
6 BURGERS and FRIES 5.00
9 BURGERS and FRIES 7.50
12 BURGERS and FRIES 10.00

310 EAST COLLEGE AVENUE
Monday to Thursday - Open to 1 am
Friday and Saturday - Open to 3 am
Free parking at Cedar Way entrance.

The TRAIN STATION opens 10 am every home football Saturday...

The TRAIN STATION corner of College & Garner plenty of parking behind the Station

SPORTY FALL JACKETS

from The Carriage House

STOP IN TODAY

The Carriage House 109 S. Pugh

The Total Store For Today's Woman on Campus

BLANK TAPE SPECIALS

We're trying to move out 5,000 cassettes in one week. So we're offering unbelievable prices on quantity purchases.

	1 case	2 cases	4 cases	10 cases
Maxell UDC-90	40/12	38/12	36/12	34/12
Maxell UDC-90 XLI or II	49/12	47/12	44/12	41/12
TDK DC-90	22/10	20/10	18/10	15/10
TDK ADC-90	31/10	29/10	27/10	25/10
TDK SAC-90	38/10	36/10	34/10	31/10
BASF PRO I	35/10	33/10	31/10	28/10
BASF PRO II-CRO II	38/10	36/10	34/10	31/10
BASF PRO III-FECC	38/10	36/10	34/10	31/10

We carry over one hundred major brands from ADS, Adient, Bose, Hafler, Allison, Genesis, Technics, Sanyo, Toshiba, Pioneer, Harman-Kardon, SAE, Thorens, Phase Linear, Soundcraftsmen, Toshiba, Fisher, AKG, Bie, Jensen, Nikko, Philips, Tandberg & More. Stop in for a demonstration. Fall sale going on now.

Hifi House

THE AUDIO/VIDEO PROFESSIONALS

Hours: Till Sept. 15, Mon - Fri 11-9; Sat 11-1

366 E. College Ave. State College, Pa. 814-237-8888