

Spring Week contest results are corrected

Spring Week Chairman Paula Fedorka announced last night revisions have been made in the Spring Week standings.

Alpha Chi Sigma fraternity and Phi Mu sorority were third place winners in the chariot race; Sigma Alpha Epsilon fraternity and Delta Delta Delta sorority have been awarded first place in the skit competition.

Fedorka said these changes had no effect on the overall standings, and the errors were mathematical. Trophies for these events were given to the Spring Week chairmen for the individual sororities in the final Panhellenic Council meeting of the term.

Calling Spring Week 1979 "the most successful in five years," Fedorka urged

groups to "remember the fun that events such as Spring Week and Homecoming are supposed to be, no matter what happens in the competition."

Greek Adviser Jeff Fremont said he was bothered by the "irresponsible things that happened during the Phi Psi 500 this year." Fremont said he was pleased town officials asked to speak with the Interfraternity Council on the matter.

"I want to see the Phi Psi continue," Fremont said. "It's a tradition."

In other business, past Panhel president Jeanne Borkowski was chosen Panhel Woman of the Year and Elizabeth Junker of Kappa Alpha Theta sorority was announced the recipient of a \$400 Panhel scholarship.

—by Wendy Zoldos

New postal restrictions to start

New size standards for envelopes, cards and other pieces of mail will become effective on July 15, the United States Postal Service said. If pieces are less than 3½ inches high, five inches long, or seven thousandths of an inch thick, they won't be mailed.

A seven-cent surcharge for oversized and odd-shaped pieces of mail also will become effective that day. First class mail weighing one ounce or less and

single piece third class mail of two ounces or less, that exceeds 6¼ inches in height, 11½ inches in length or one-fourth inch in thickness, will be subject to the surcharge.

Odd-shaped pieces, whose length in between 1.3 times and 2.5 times the height and within the weight limits also will be charged. Lightweight film cartridge envelopes will be subject to the surcharge.

Program to relax tense people

The Penn State psychology department is offering an individualized relaxation training program for people who feel tense at least half the day.

Fred Heide, director of the program, said its two purposes are to provide

relaxation skills to tense persons, and to find out more about how people respond to relaxation.

Physiological responses of the participants will be measured as they practice relaxation.

Grateful Dead to liven Rec Hall

By PATRICK KIGER
Daily Collegian Staff Writer

At about this time eight months ago, the Grateful Dead were touring Egypt, doing the first gigs ever done by an American rock band in that ancient nation. Along the way, they made a stop at Giza, where on the night of a lunar eclipse they did a concert in front of the Great Pyramid.

And Bob Weir, who plays rhythm guitar and does some of the vocals for the Dead, recently told a Cleveland newspaper reporter that he has even more ambitious journeys in mind. "What I would really like to do sometimes is a recording safari around the world," he said. "Record native songs. I'd mostly go to Africa. . . ."

Thus, in view of the Dead's apparent penchant for journeys to unusual places, no one really should have been surprised when it was officially announced last week that the legendary supergroup would indeed be appearing at 8 tonight in Rec Hall. After all, the land of Eddy Eddy, the Phi Psi, and tuition hikes may be the only bizarre destination left for them.

However, what may surprise and perhaps perplex the local hardcore Dead freaks — especially the ones in the garland-and-skull t-shirts who camped out in front of the HUB last Monday night to be assured of getting seats to the sold-out performance — is that their favorite band's sound is, well, changing a bit.

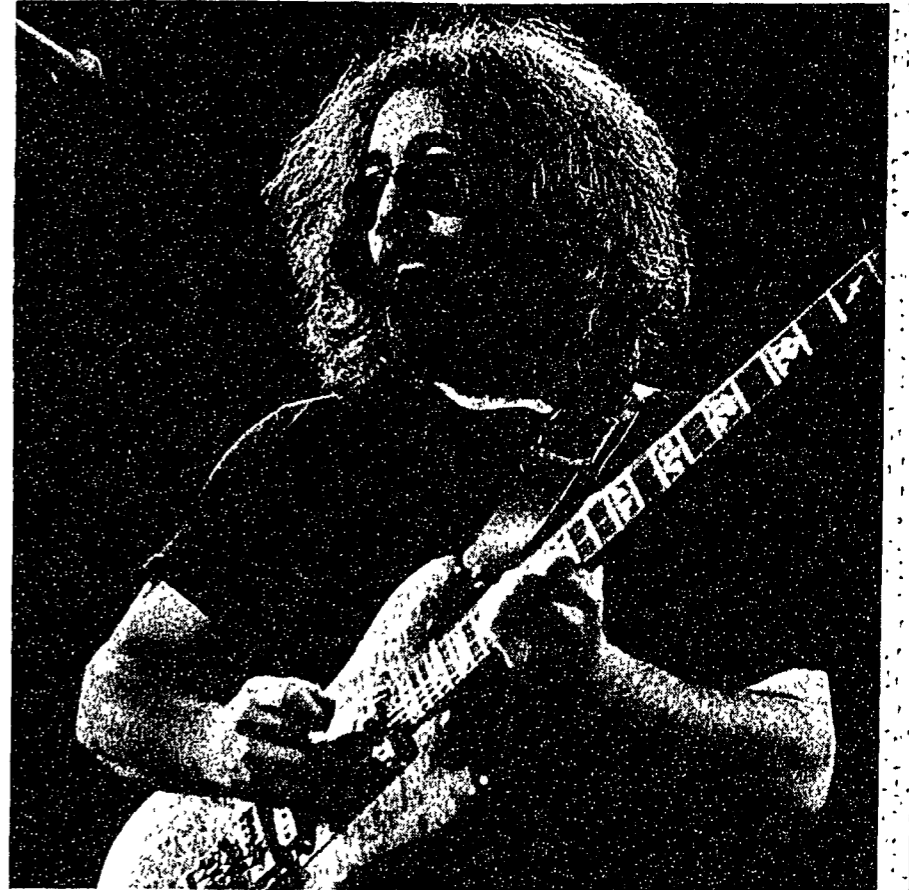
The difference in the Dead is readily apparent on their most recent release, last fall's "Shakedown

Street" (Arista). The album, which was produced by Lowell George of Little Feat fame, includes several cuts on which the Dead stray from their characteristic amalgam of country-blues-rock 'n' roll, towards a sound which is lighter, tighter, a lot jazzier and — if it dare be inferred — these sixties counterculture heroes — a little more commercial. The most glaring example is the title track, in which lead guitarist Jerry Garcia wraps a few of his unconventional riffs around some urban-flavored lyrics ("Nothing's shakin' on Shakedown Street/used to be the heart of town. . .") and a beat which is decidedly discoish.

Of course Weir, who did the lead vocals on "Sugar Magnolia," "One More Saturday Night" and many of the other songs which made the Dead symbolic of virtuoso laid-backness in the early seventies, has categorically denied the changes are the result of any overt action on the part of the band.

"If the album is more accessible than anything we've done in the past," he told the Philadelphia Inquirer a short time ago, "it's not through any conscious effort on our part. We were limited in the time we had to put it together, with the trip to Egypt coming up" — the album was recorded last summer in San Francisco — "so we decided not to overly complicate things, to put a lot of stuff on the record. We wanted to make it as simple as possible."

Weir, however, did admit that the Dead are indeed moving in a different direction. "To my ears, at least, I don't think we can be labelled any one



Jerry Garcia

Photo by Chip Connolly

thing — country rock or blues rock or jazz rock," he said.

And even "Shakedown Street" may not give an accurate indication of how the Dead will sound tonight, due to a shift in personnel since the album's release last October. Keyboardist Keith Godchaux and his wife Donna, whose vocals were one of the integral stylistic aspects of the Dead's latest release, both recently left the group. To help fill the void left by the Godchauxs, the Dead have temporarily enlisted the aid of Brent Mydland, a keyboardist-vocalist who played with Weir's solo tour last year.

Penn State Water Ski Club Meeting

Tues. 8th 7:30 373 Willard
T-shirts are in "for real"

R-138

Zina's HAIR BOUTIQUE

SPECIALS
(now through the end of May)
Cut, Shampoo & Blow Dry
\$10.00

PERMS
10% off on ALL Perms which include cut & style

CHECK OUT OUR LOW PRICES ON OTHER SERVICES

240 S. Pugh St., Suite A

Phone 234-4313

Live like the Dickens at a price even Scrooge would love.

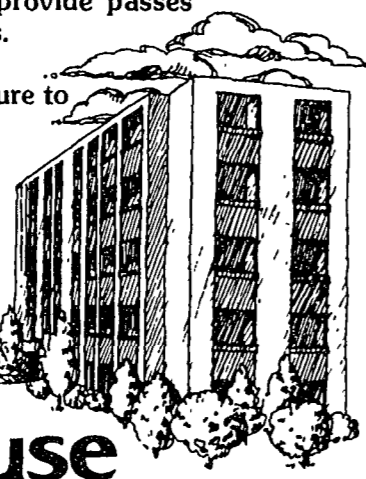
Even Scrooge would be impressed with the value offered at Logan House. So many amenities for so little cost. All utilities are included, even cable T.V. — no surprises at the end of the month. That's the Scrooge part. The Dickens end of it, the features. For example, all apartments are completely furnished. The walls are solid, which means you can study while the neighbor enjoys his new quad system. Or vice versa. Then the "extras." A free membership in Parkway's Swim Club and a free membership in Nittany Nautilus. We even provide passes good on all Centre Line buses.

We also offer 3, 9, and 12 month leases. Our rents are sure to impress the Scrooge in you. But you'll be living like the "Dickens" with Logan House's abundant amenities.

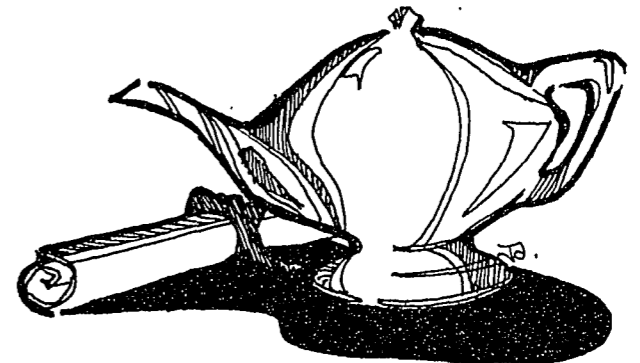
We have apartments for the summer at reduced rates.

Logan House

1000 Plaza Drive
State College, PA
A.W. & Sons Enterprise Rental Office Hours
M-F 8:30-5, Sat 10-4 814/238-3432



EVAN PUGH SCHOLARS



The Evan Pugh Scholars are those juniors and seniors who were in the upper 0.5 percent of their respective classes at the end of winter term, 1979. All have been full-time students for at least six terms prior to selection. The juniors this year have cumulative grade-point averages of 3.96 and above. The seniors have averages of 3.95 and above.

Dr. John W. Oswald, president of the University, will present the awards at the Honors Convocation at 2:45 p.m. Sunday, May 13, in the Milton S. Eisenhower Auditorium.

The 1979 Evan Pugh Scholars are:

Juniors:

Cindy Ade, Philadelphia, Pa., University Park, Engineering Science
Don E. Burgess, Friendsville, Pa., University Park, Physics
Christopher Connors, Monroeville, Pa., University Park, Mechanical Engineering
Carol A. Davis, Lebanon, Pa., University Park, Labor Studies
Mark S. Dietz, Camp Hill, Pa., University Park, Aerospace Engineering
Donald Ellenberger, Munhall, Pa., University Park, Advertising
James T. Elwell, Harwinton, Ct., University Park, Animal Biology
Lori F. Fehr, Pine Grove, Pa., University Park, Horticulture
Lori L. Friedgen, Lafayette Hill, Pa., University Park, Elementary Education
Michelle T. Goraczko, Morton, Pa., University Park, Health Planning and Administration
Irene M. Hughes, Old Forge, Pa., University Park, Individual and Family Studies
Nancy J. Jubb, Pittsburgh, Pa., University Park, Ceramic Science
Douglas R. King, State College, Pa., University Park, Biochemistry
Priscilla L. Kleiner, Pine Grove Mills, Pa., University Park, Accounting
Mark G. Marshall, Erie, Pa., Behrend, Political Science
Elizabeth L. Moore, Camp Hill, Pa., University Park, Elementary Education
Darlene C. Mueser, Harrisburg, University Park, Geological Science
Kimberly A. Neely, Emlenton, Pa., University Park, Chemi
Susan Overmeyer, Poughkeepsie, N.Y., University Park, L. ry Products
James R. Pavlock, Curwensville, Pa., University Park, Economics
Charles J. Petredis, Pittsburgh, Pa., University Park, Finance
Sandra J. Randis, Drums, Pa., University Park, Petroleum and Natural Gas Engineering
Mary Catherine A. Scullin, Philadelphia, Pa., University Park, Management
Karen J. Severson, Pittsburgh, Pa., University Park, Accounting
Phillip G. Sinclair, Port Vue, Pa., University Park, Chemical Engineering
Ajay B. Singh, Clarion, Pa., University Park, Pre-medicine
Anthony G. Stair, Hyndman, Pa., University Park, Agricultural Business Management
Mark D. Vancura, Washington, Pa., University Park, Computer Science

Seniors

Raymond E. Allamong, Allentown, Pa., University Park, Business Logistics
Nancy C. Artz, West Chester, Pa., University Park, Finance
Susanne M. Behe, Altoona, Pa., University Park, Elementary Education
Joshua D. Bernoff, Dresher, Pa., University Park, Mathematics
Karen J. Bertovich, Monroeville, Pa., University Park, Nutrition
James R. Boyer, Harrisburg, Pa., University Park, Mathematics
Douglas C. Bozong, Bloomsburg, Pa., University Park, Physics
John M. Cimbal, North Huntingdon, Pa., University Park, Aerospace Engineering
James W. Corley, Johnstown, Pa., University Park, Accounting
Mark A. Damico, Silver Spring, Md., University Park, Mechanical Engineering
Bonnie P. Gillis, Shippensburg, Pa., University Park, English
Mark W. Griffith, Mt. Bethel, Pa., University Park, Pre-medicine
Lisa M. Hemlick, Philadelphia, Pa., University Park, Psychology
David E. Hoegberg, Wallingford, Pa., University Park, English
Judy A. Howe, Erie, Pa., University Park, Horticulture
Carol L. Kinney, Beaver, Pa., University Park, Rehabilitation Education
Bruce R. Knoebel, Pittsburgh, Pa., University Park, Forest Science
Karl G. Koenig, Erie, Pa., University Park, Biology
Andrew L. MacDonald, McKeesport, Pa., University Park, Electrical Engineering
Gregory J. Manzo, Ellwood City, Pa., University Park, Metallurgy
Vicki E. Markley-Sairs, State College, Pa., University Park, German
Melinda L. Millard, Topton, Pa., University Park, Health and Physical Education
Schuyler E. Miller, Phoenixville, Pa., Behrend, Psychology
Darlene C. Mueser, Harrisburg, Pa., University Park, Geological Science
Deborah Pferdehirt, Pittsburgh, Pa., University Park, Speech Pathology
James F. Rohrbeck, Millintown, Pa., University Park, Accounting
Jacqueline Russell, Tremont, Pa., University Park, Accounting
Cindy L. Schirmer, Montgomeryville, Pa., University Park, Forest Science
Greg P. Slusser, Hazleton, Pa., University Park, Accounting
Laurie B. Springer, New Cumberland, Pa., University Park, Accounting
James M. Stavely, Paoli, Pa., University Park, Nuclear Engineering
Raymond Steinbacher, Erie, Pa., Behrend, Mathematical Studies
William D. Straesser, Martinsburg, Pa., University Park, Psychology
Jennifer M. Suchin, Gibsonia, Pa., University Park, Biology