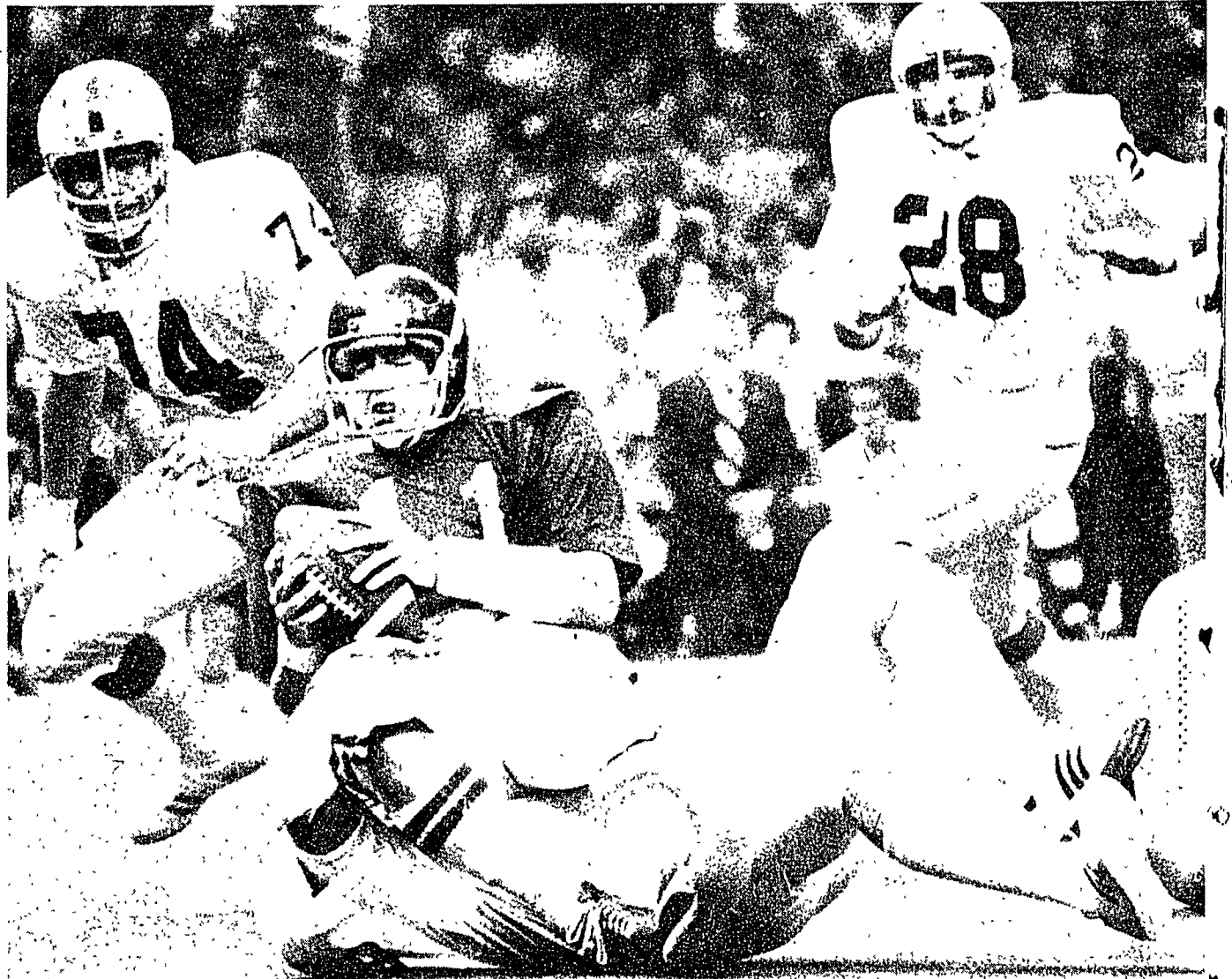


The 1979 Sugar Bowl: It was the

Clockwise starting at the right: Defensive end Larry Kubin slides off a tackle by Alabama guard Vince Boothe while in pursuit of quarterback Jeff Rutledge. Rutledge is pulled down by middle guard Tony Petruccio, below right as Kubin and Rich Milot follow the play. At the bottom, before the game kicker Matt Bahr loosens up his leg in futile anticipation of a field goal attempt. Below, two cheerleaders wipe away the tears after the final gun sounded, ending Penn State's chance at its first national championship.



Photos by Lynn Dudinsky, Chip Connelly and Joe Tori

