

Lions blank Lock Haven, 3-0

Booters solid in season opener

By RICK WEBER
Collegian Sports Writer
Sophomore winger Bob Ehrlich tallied two goals and collected one assist to lead Penn State's soccer team to a solid 3-0 season-opening victory over Lock Haven Friday night.

A Jeffrey Field crowd of 4,000 survived a cold, blustery night to see the Lion booters completely dominate the smaller squad from Lock Haven. The Lions outshot the Eagles 30-9, and had a large edge in corner kicks, 9-2, as they outclassed a team that's usually a powerhouse in the

Pennsylvania Conference.

"Overall, we did quite well," said Penn State soccer coach Walt Bahr. "Bob Ehrlich had his best game since he's been at Penn State. Ken McDonald played a nice settled game. Matt Bahr was very steady and Herb Menhardt did well for a freshman."

"We did at times control the tempo the way I were forcing too many balls forward and we got into a kicking game with Lock Haven. In the second half, we slowed it down quite a bit and

controlled the tempo well." "There really wasn't much pressure on the defense," Bahr added, "but we were a bit ragged back there anyway. All in all, with so many key people missing in an opening game, we did well."

The key people that were missing included midfielders Sal Bommarito and Kevin Costello, halfback Dave Lloyd, and attacker Jim Stamatis. Bommarito, Lloyd, and Costello had pre-game injuries that kept them out of the lineup. Stamatis, a freshman from Bethlehem, started and played a short time in the first half before he was injured. He went up for a head ball, came down, and twisted his ankle. X-rays were negative but Stamatis will be hobbled by a bad sprain for at least a few days.

Both Penn State and Lock Haven had good scoring opportunities early in the first half. With 7:48 gone, Ehrlich fired a hard liner at Lock Haven goalie Tom Fitzwater, but the ball sailed over the crossbar. Six minutes later, Lion winger Rich Reice broke free inside the 16-yd. line and fired a hard shot that hit Fitzwater in the hands and deflected over the goal.

"We had a lot of opportunities to score," Bahr said, "but we just hit a lot of wood. The shots just weren't going in. We could have

doubled our goal output with some luck."

Lock Haven had a number of chances, but the best came with 15:58 gone, when forward Billy Bush was left open on the left side of the penalty area. Bush kicked a grounder that was just wide to the right of the post.

"If Lock Haven had scored just once early," Bahr added, "they could have sat back and nursed that one goal lead. It would have given them a lot of confidence if they could have made good on just one of their opportunities."

Lock Haven didn't cash in on any of its chances, but with 18:11 gone in the first half, Penn State did. Freshman attacker Jim Stamatis took a pass from Ehrlich on the left side of the 16-yd. line and beat goalie Tom Fitzwater with a grounder to the right corner of the goal.

The Lions made it 2-0 with 13:55 left on Ehrlich's first goal of the night. Ken McDonald fired a shot which Fitzwater knocked up in the air. Lock Haven halfback Bert Gottbrecht tried to save it but Ehrlich punched it in.

With 7:22 gone in the second half, Ehrlich missed a golden opportunity for his second goal. He booted a grounder from inside the 16-yd. line but it was deflected by Fitzwater and missed the right post of the goal.

However, Ehrlich wasn't

to be denied on his next scoring chance. With 10:00 elapsed, he drilled a high liner over the outstretched hands of Fitzwater to give Penn State a 3-0 lead. "Penn State has a very strong squad this year," said Lock Haven coach Mike Parker. "They moved the ball well and looked very strong. I have to give full credit to them."

The Lion booters will take on an Irish University team in an exhibition game tonight at 7:30 at Jeffrey Field:



First of three

Jim Stemitis (10, center) rifles home the first of three Penn State goals Friday night as the Lions blanked Lock Haven.

Photo by Chris Pavukumet

Major league standings

National League				American League			
East	West	Pct.	GB	East	West	Pct.	GB
Phila 86	55	.610	—	New York 87	54	.617	—
Pitts 82	59	.582	4	Balt 77	65	.542	10½
New York 74	67	.525	12	Cleve 72	70	.507	18½
Chicago 65	78	.455	22	Boston 68	74	.479	19½
St. Louis 62	77	.446	23	Detroit 66	76	.465	21½
Montreal 48	91	.345	37	Milwaukee 62	79	.440	25
West				West			
Cinca 93	52	.641	—	Kan City 82	60	.577	—
Los Ang 82	59	.567	11	Oakland 77	65	.542	5
Houston 71	74	.490	22	Minn 73	72	.503	10½
San Diego 67	78	.462	26	Calif. 65	79	.451	18
San Fran 65	81	.445	28½	Texas 64	78	.451	18
Atlanta 61	81	.439	30½	Chicago 61	82	.427	21½

Yesterday's Games
St. Louis 6, New York 5
Philadelphia 9, Chicago 9
Pittsburgh 6, Montreal 1
Atlanta 3-0, Los Angeles 2-2, 1st game
10 innings
San Francisco 3-8, Cincinnati 1-9, 2nd
game 11 innings
Only Games scheduled

Yesterday's Results
Detroit 6-1, New York 0-3
Boston 11, Cleveland 8
Kansas City 16, Minnesota 6
Baltimore 3, Milwaukee 1
Oakland 9, Texas 5
Chicago 2-5, California 1-1

Ehrlich switch rises goal production

By PETE DOUGHERTY
Collegian Sports Writer
What difference could a year make in the Penn State-Lock Haven soccer rivalry?

Well, first of all, it gave Lock Haven goalie Steve Tanner, who made 18 saves — many of the spectacular variety — in a 1-1 tie during the game of a year ago, a chance to graduate.

But much more important than the absence of Tanner was the presence of a different offensive tactic and a differently-positioned Bob Ehrlich, both of which were keys in the Lions' 3-0 blanking of Lock Haven in the latest meeting Friday night at Jeffrey Field.

Ehrlich, a sophomore, scored two of the goals and assisted on the other by

Bethlehem Liberty High School teammate Jim Stamatis as a part of coach Walt Bahr's new strategy along the forward wall.

"We wanted to try to go with two 'strikers' up front and play the wings more back," explained Bahr. "This pulls Bob Ehrlich back where now he gets the ball more at midfield. It's almost like playing four people at midfield."

A halfback last year, Ehrlich agreed that one of the major reasons for the switch to forward was because "we weren't getting enough midfield play last year."

Ehrlich was figured to be more in Penn State's offensive plans this year after a one goal, three assists season in 1975, but few figured he would double his

goal output in the first game. After setting up Stamatis with what proved to be the winning goal at 18:11, Ehrlich made it 2-0 less than 12 minutes later when he took a pass out in front of the net from sophomore Ken McDonald and beat Lock Haven goalie Tom Fitzwater.

"We've worked on the play all preseason," Ehrlich said. "Coach Bahr said if it paid off once the whole year it would be worth it."

With ten minutes gone in the second half, Ehrlich rammed home a 20-yarder to close the scoring. "I was lucky it even went toward the goal," Ehrlich said of the shot that found the upper-right corner of the net.

Penn State outshot the Eagles, 30-9.

Penn State Ice Hockey Club

General Informational Meeting

• Open to all students and faculty interested in IM and/or VARSITY competition — (Players for IM's, VARSITY, Student Managers and PUBLICITY HELP for VARSITY)

WED. SEPT. 15 7:30 P.M.

S208 HUMAN DEVELOPMENT

Hockey Hotline: 237-2140

THIS AD SPONSORED BY JOHN'S DERAILLEURS

RUBBER PLANTS

\$6

WOODRING'S FLOWERS
145 S. Allen



gentleman's habit

providing intense excitement in fine men's clothing, daily 9:30-5:30, Monday & Friday till eight,

119 Fraser Street



A fashionable celebration of your birthsign. A new and distinctive zodiac bracelet from Speidel. In yellow or white with matching or contrasting colored zodiac symbols. \$10.95.

Zodiac Bracelets

MUR JEWELRY COMPANY

125 S. Allen Street
State College, Pa. 16801

BankAmericard & Master Charge Welcome

OTIS FOOD CO-OP

Sign-up for new and returning members

Monday thru Wednesday
9 - 4 in Room 20 HUB

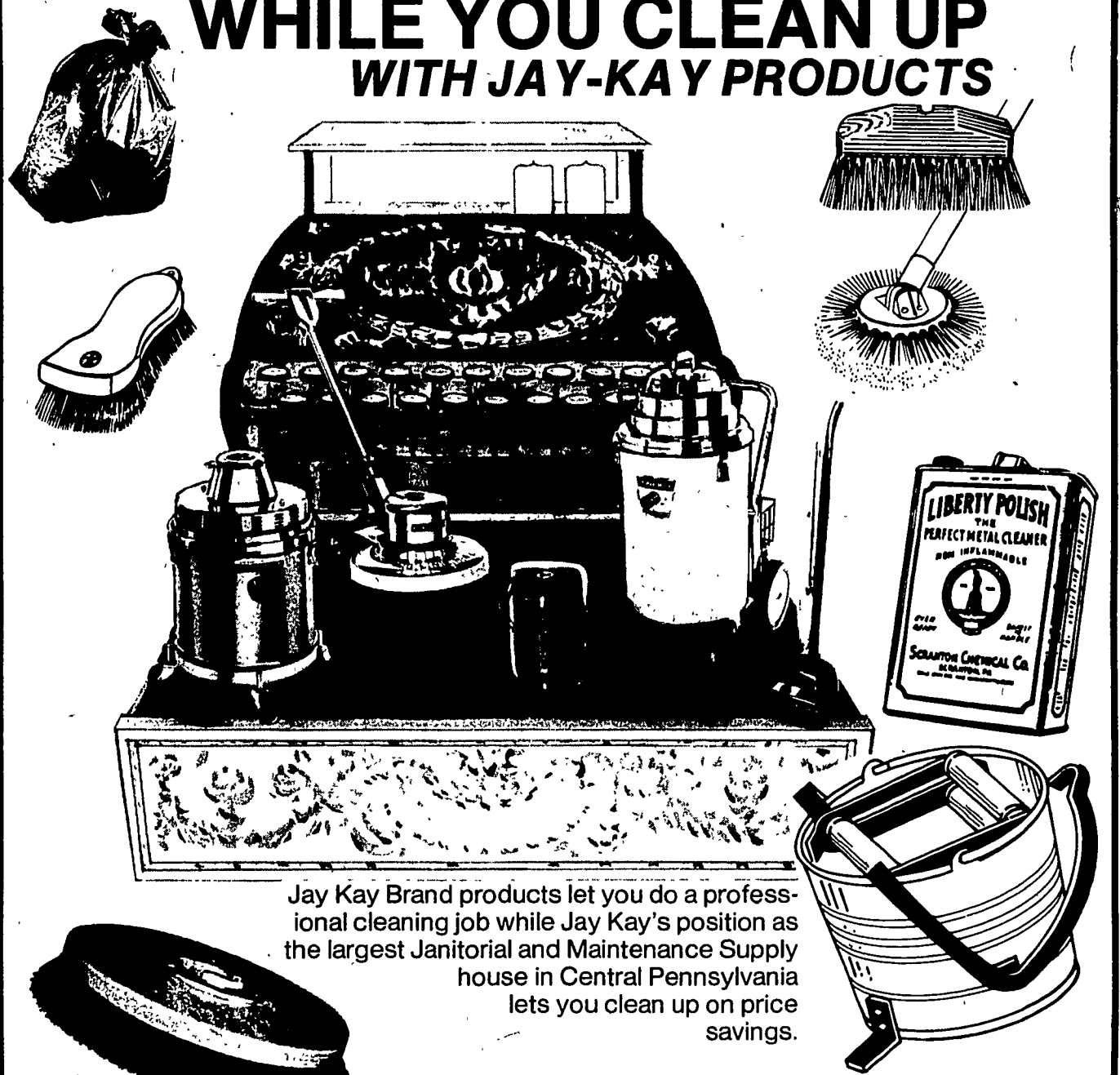


\$2.00 Refundable Registration Fee

(Limited Membership)

For those interested in OTIS membership
First meeting this term
6:30 p.m. — 307 HUB

CLEAN UP WHILE YOU CLEAN UP WITH JAY-KAY PRODUCTS



Jay Kay Brand products let you do a professional cleaning job while Jay Kay's position as the largest Janitorial and Maintenance Supply house in Central Pennsylvania lets you clean up on price savings.

The best products at the best price... that's the winning combination.



1223 N. Atherton St.
State College - 237-7618