

Rate hike wanted

HARRISBURG (AP) — Pennsylvania Blue Shield has requested a \$41.8 million rate increase that would raise subscribers' monthly fees by as little as 48 cents to as much as \$4.08, the state Insurance Department said yesterday. The department said it

would schedule public hearing on the request in early October. Blue Shield wants the new rates to become effective Nov. 1.

The proposed increase would affect about three million subscribers statewide, the Insurance Department said.

Average increases would be 48 cents for Medical and Surgical Plan B; \$1.12 for the 65 Special Plan; and \$4.08 for the Blue Shield 100 plan.

State mental patients to get hearings

HARRISBURG (AP) — Roughly 6,000 persons committed involuntarily to mental hospitals must have hearings over the next six months to determine if they were hospitalized fairly, a state official said yesterday.

Robert Haigh, deputy commissioner for mental health, said the hearings are required under the new Mental Commitment Procedures Act, which took effect yesterday.

Attorneys representing both patients and the state will argue whether each patient meets the new standard for involuntary commitments.

Under the new law, signed by Gov. Shapp in July, a person

can be sent to a mental facility against his will only if he poses a clear danger to himself or others.

The old standard, repeatedly struck down by the courts, permitted a person "who appears to be mentally disabled and in need of care" to be committed.

"Impermissibly vague," declared the U.S. District Court in Scranton in July.

The new provision presents more logistical than functional problems, Haigh said. The six-month deadline for completing the hearings is reasonable and can be met, he said.

Some patients undoubtedly will be released because they

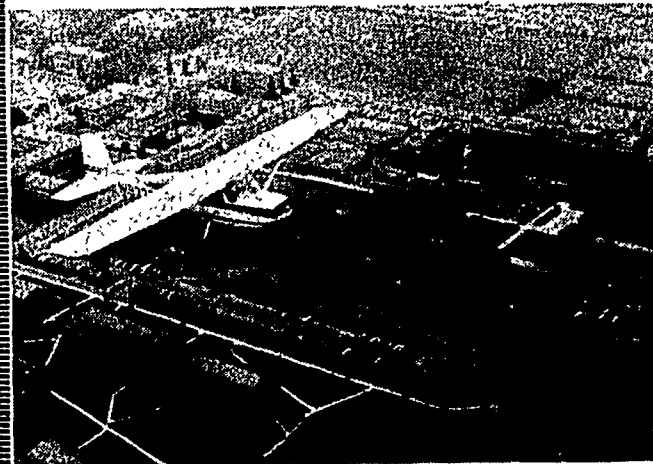
don't meet the new criteria, Haigh said, but he added he hoped patients in need of care would not be released on mere technicalities.

Other changes under the new law:

— Officials must reach a decision on commitment within 72 hours after a person is brought in for treatment. The old standard was 10 days.

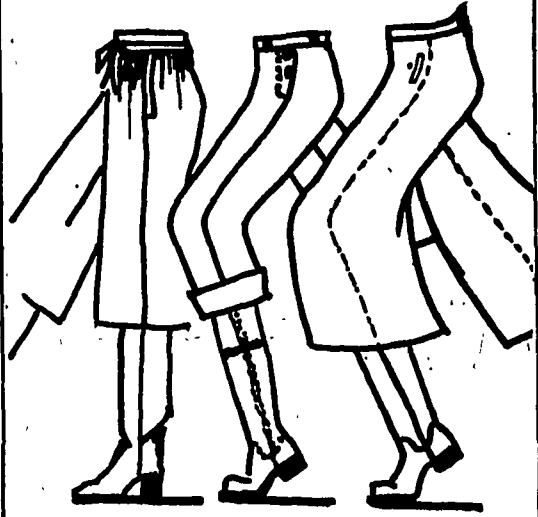
— Common Pleas judges can appoint mental health review officers to decide involuntary commitment cases. The officer, an attorney, could devote more time to the cases than the judge.

FAA APPROVED Private Pilot Flight and Ground School University Park Airport



Enrollment Open — Final Registration
Contact Mr. Richardson
355-5511
Try our new single & twin engine flight simulator

The Bumble Bee



Gauchos

214 e. college avenue

discover ZIFF'S discover ZIFF'S

If

you could use a new pair of jeans, a dress, coat, flannel, slacks, shirt, top, jacket or such...

BUT

you aren't feeling too wealthy right now...

discover ZIFF'S

We have quality name brand fashions for men, ladies, and children at prices you can live with...

AND

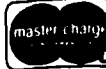
We have a great lay-away plan — only 10% down will hold your purchase.

SO,

discover ZIFF'S

Westerly Parkway Plaza

10-9 Daily
10-6 Sat.

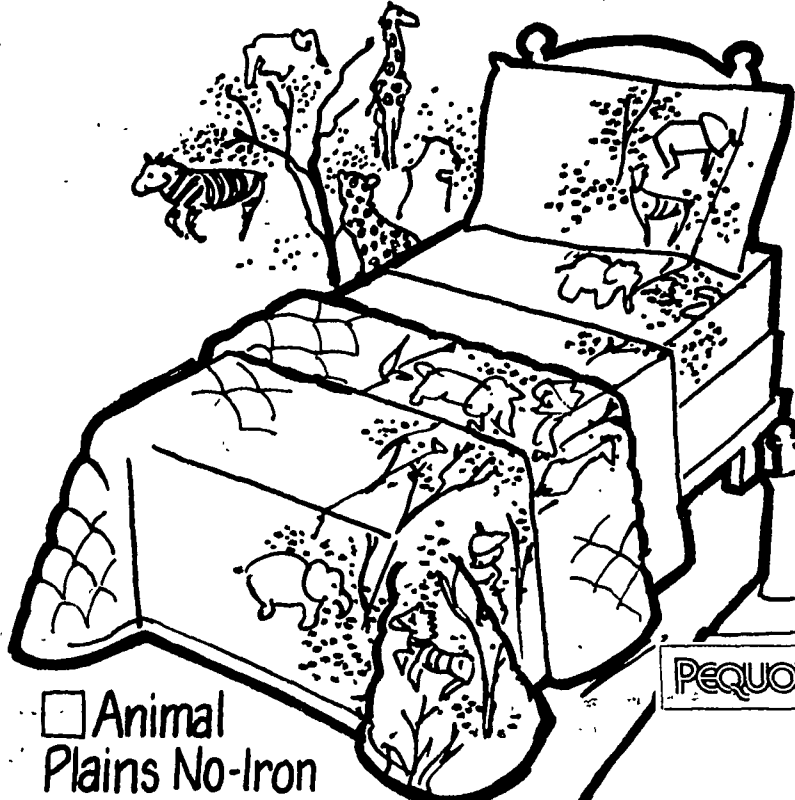


discover ZIFF'S discover ZIFF'S



Check us out.

Hills has a big selection of items you may need to set up housekeeping. See something you need on this page? Check it off and bring this ad with you when you visit Hills. One of the best things about Hills is low prices. Low prices designed to save you money every day.

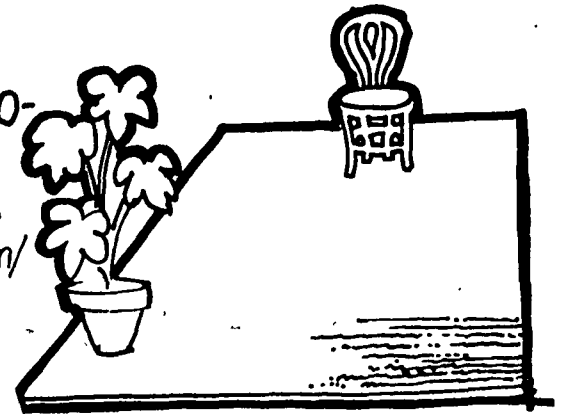


Animal Plains No-Iron Sheets All in flat or fitted styles. Cotton/polyester blend.
2.94 twin **3.94** double **2.94** pair of cases

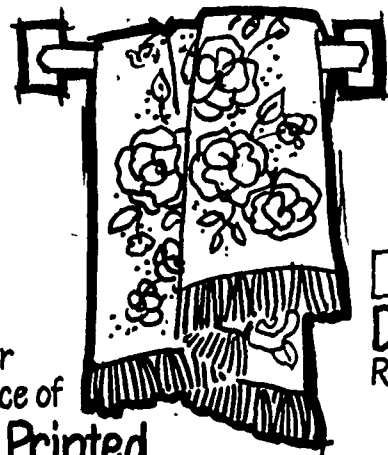


No-Iron Snow White Muslin Sheets Cotton/polyester blend.
1.94 twin **2.84** double **1.57** pair of cases

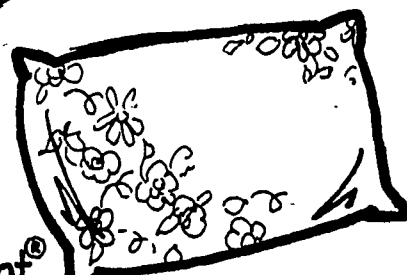
Pequot No-Iron Printed Sheets In flat or fitted styles. Cotton/polyester blend.
1.94 twin **2.84** double **4.77** queen **2.47** pair of cases



Room Size Rugs *8 1/2 x 11 1/2 size. Polypropylene olefin pile. **12.87**

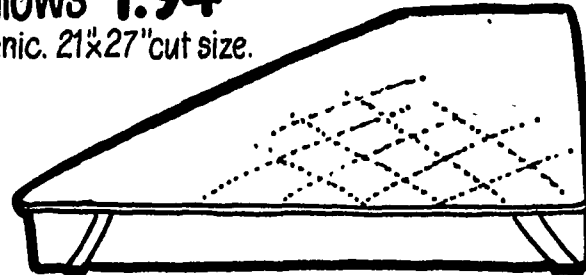
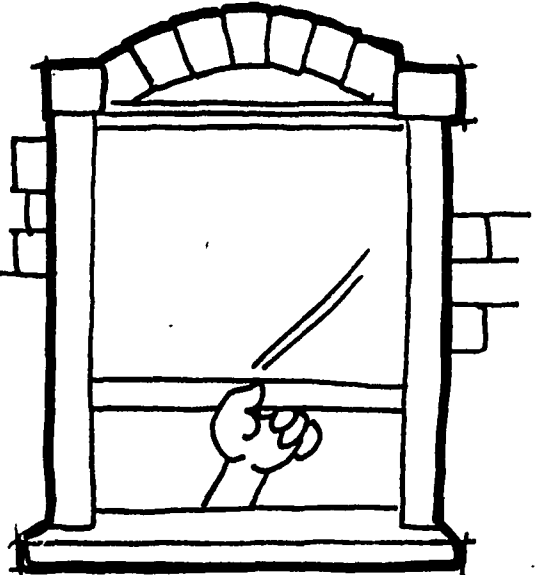


Your choice of Printed, Jacquard or Fancy Velour Cotton Towels
1.47 bath **87¢** hand **57¢** wash

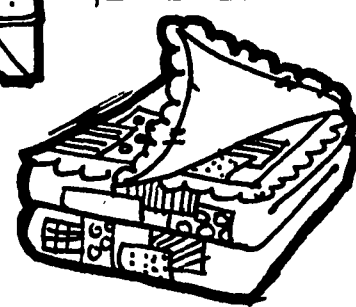


DuPont® Dacron® Bed Pillows Resilient, non-allergenic. 21 x 27" cut size. **1.94**

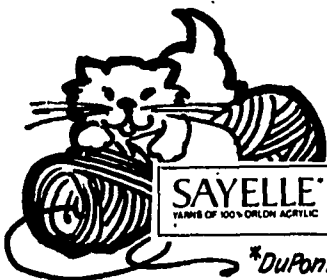
Window Shades translucent room darkening shades. **94¢** **1.57**



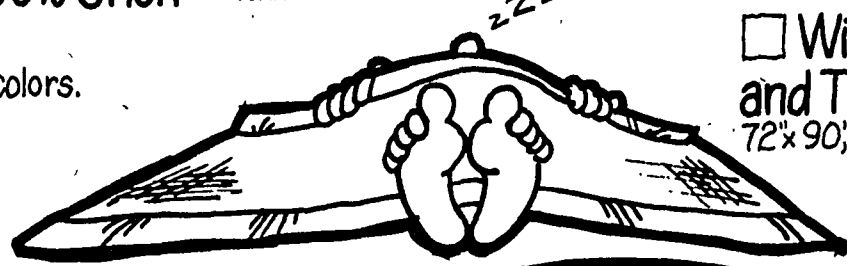
Anchor Band Reversible Mattress Pads Polypropylene cover, Kodel® polyester filling. **1.97** twin **2.97** double



Reversible Patch Quilts 100% cotton cover, polyester filled. **5.87**



Sayelle® 100% Orlon® Acrylic Yarn An assortment of colors. **77¢** 4oz. skein *DuPont® Certification Mark



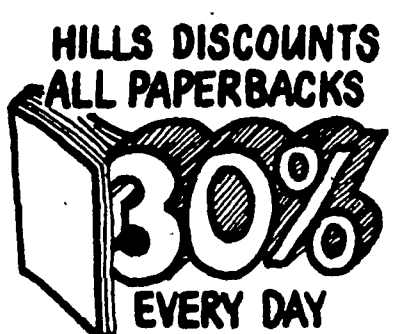
Winter Weight and Thermal Blankets 72 x 90", polyester. **3.84**

Warning: Credit Cards Can Be Hazardous To Your Wealth.

Use this page as a handy checklist. Check off what you need and bring it with you when you visit Hills.



THE ANTI-INFLATION DEPARTMENT STORE



State College: Hills Plaza · South Atherton Street (Route 322 E.) and Branch Road · Store Hours: 10am - 10pm, Monday - Saturday