

Life-like 'man' part of art show

By LEAH ROZEN
Collegian Staff Writer

Tucked into a rear corner of the third floor gallery in the University's Museum of Art is a tired looking, grey haired man sitting back in a battered wooden chair.

People viewing the Museum's current "Living American Artists and the Figure" exhibit walk right by him. Then they stop, turn around and do a double-take.

The worn-out gentleman in the chair is part of the show. He is an absolutely life-like figure made of polyester and fiberglass, oil and mixed media by artist Duane Hanson, who has called his creation "Businessman."

The people at the exhibit stop to circle the figure.

"Businessman" probably draws the most attention of the almost 100 works in the show.

One recent viewer, an older man who bore a noticeable resemblance to the art work, just stood in front of it muttering, "Geez, I can't believe it. I'm going to light his cigar. I'm just going to light his cigar." The man was restrained from taking that action but he had to be coaxed away from Hanson's piece by his companions.

Concentrating on the treatment of the human figure in American art, especially in the last decade, the show is currently housed in the museum's first and third floor galleries. It will continue through Dec. 22.

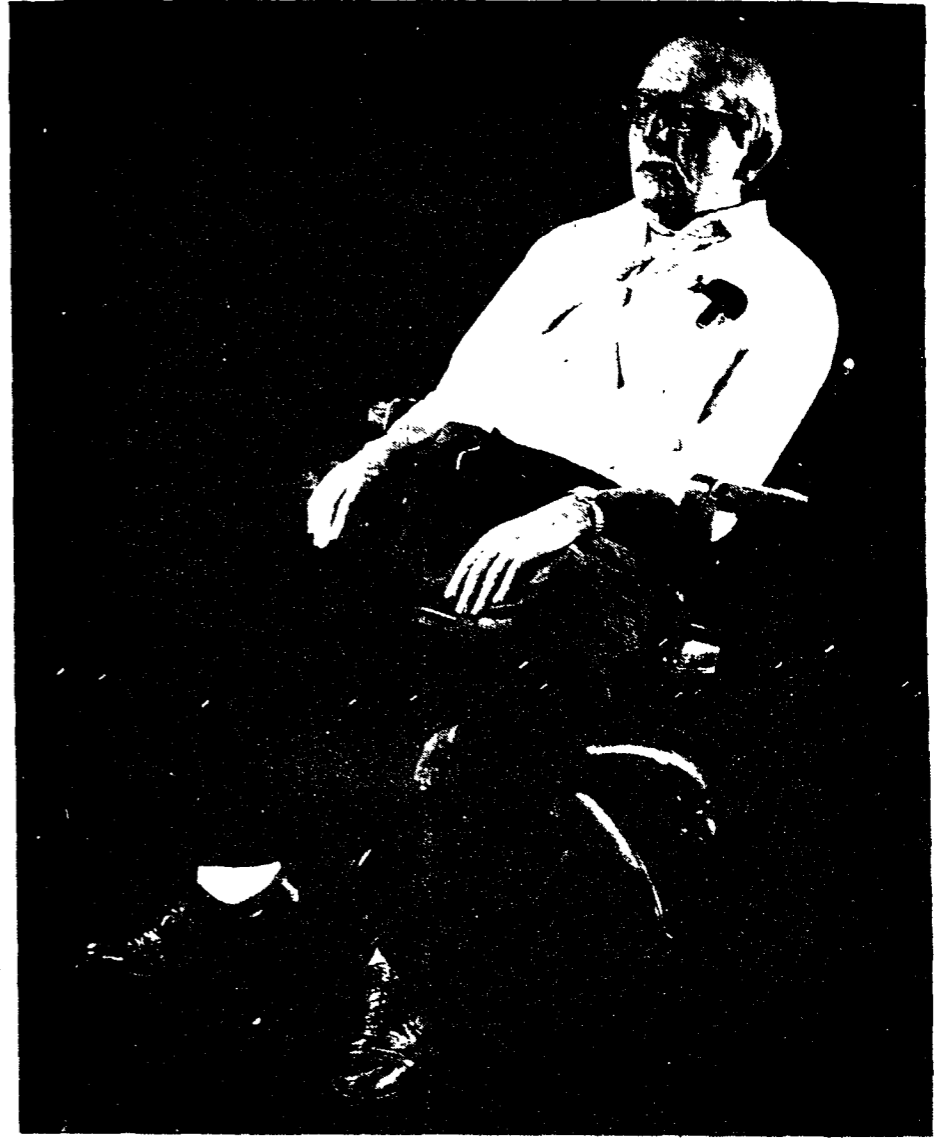
William D. Davis, assistant director of the museum, said in the exhibit's catalogue, "Living American Artists and the Figure" was conceived as

a survey; and while not completely representative of the national scene, it does represent a substantial number of artists who are concerned with the figure."

The show includes: Andrew Wyeth's watercolor and airbrush "Wainscot Chair;" Harvey Dinnerstein's large oil on canvas "Parade;" photo realist Hilo Chen's "Big Beach;" and Philip Pearlstein's "Male and Female Models on Victorian Sofa with Indian Blanket."

Davis selected the works. The exhibit, limited to one work by each artist, includes oils, watercolors, prints, drawings and sculpture.

The museum is open daily from noon to 5 p.m. Tours are scheduled Thursday at 1:30 p.m. The Museum is closed on Mondays.



He's not flesh and blood

DUANE HANSON'S "BUSINESSMAN," now on display in the Museum of Art, is made of polyester, fiberglass, oil and mixed media. The life-like figure is part of the Museum's "Living American Artists and the Figure" exhibit.

Senate to vote on busing bill

HARRISBURG, Pa. (AP) — Senators on both sides of the school busing issue are preparing for a vote on whether to curtail state desegregation powers.

A pending Senate bill, already passed by the House, would forbid state agencies from assigning a student to any school other than the one nearest his or her home.

It is aimed at the Pennsylvania Human Relations Commission, which has issued school desegregation orders forcing reassignment of pupils to provide more racial balance within individual schools.

Senate Democratic leaders used parliamentary maneuvers to postpone Senate action on the bill until after last week's election.

But the legislature returns today from its month-long election recess and the antibusing bill is at the top of the Senate agenda.

A spokesman for Senate Majority Leader Thomas Lamb said the Democratic floor leader will ask the Senate to oppose the legislation.

Procedurally, Lamb's motion would send the legislation to a joint House-Senate conference committee. Practically, it would almost kill the bill's chances in this session of the legislature, which ends Nov. 30.

Sen. Charles Dougherty, (R-Philadelphia), a principal backer of the legislation, said he will oppose Lamb's motion and press for final approval of the House-passed bill.

"If Sen. Lamb can produce the votes, I guess we'll be finished with the busing issue for this session and we'll have to start all over again next January," Dougherty said.

Lamb, (D-Allegheny), is retiring from the legislature when the current session expires. So far he has succeeded in preventing the volatile busing issue from coming to a Senate vote.

The Shapp administration is believed to oppose the antibusing legislation, but Gov. Shapp skirted the issue in his successful re-election campaign.

Vincent Carocci, a spokesman for

Senate Democrats, said he expects a busing vote this week.

"Sen. Lamb is practical enough to recognize that there is substantial antibusing sentiment, and he just knows there is no way of avoiding nor does he intend to avoid the issue," Carocci said.

Senate antibusing sentiment is strong, according to Dougherty, but he indicated that Lamb's success in postponing a vote until after the election has put the bill in jeopardy.

"A lot of the guys are off the hook now," Dougherty said. "Before the election a lot of them were on the line with busing but you just don't have the same constituent pressures now."

A wide variety of other bills need legislative action in the next three weeks or they're automatically dead for the year.

They include tougher proposals against conflicts of interest involving lawmakers and other top state officials, a series of bills to tighten the state's campaign finance laws, and revision of the process for Senate

confirmation of gubernatorial appointments.

Other bills still pending before the legislature:

—A measure to permit preferential tax assessment of farm land. The Senate passed the measure just before its election recess, and the House must now take a position on Senate changes. The bill may be headed into conference committee.

—Limited license. The Senate must decide on the report of a conference committee on a bill to allow persons with suspended licenses to drive for working purposes. The Teamsters are pushing for the bill while the Pennsylvania AAA Federation, a group of motorist clubs, is opposing it.

—Recodification of the teachers' retirement system. Senate Democratic leaders feel changes are needed in several provisions providing more generous treatment for retiring teachers with military or vocational experience.

GENERAL PHOTOGRAPHIC

celebrates its 2nd Anniversary!



- HANIMEX LTL w/50mm f1.8 lens
- Set of automatic extension tubes
- Deluxe case
- 135mm f/2.8 automatic tele. lens
- TX 228 electronic flash over \$400 value only \$189.95

GENERAL PHOTOGRAPHIC
222 South Allen
Open Monday nights till 9

We're known as the "problem solvers" when you've got a car problem.

Sometimes people don't think about renting a car to solve a temporary car problem. If you need a car for shopping, as a temporary replacement for your regular car, or for any reason at all, we can help.

We can rent you a new Gran Torino, Mustang II, Maverick or Pinto quickly and easily, for as long as you like or for as long as you need it. Just give us a call. We're right in the neighborhood.

Our Reasonable Rates Include Insurance

- GRAN TORINO
\$11 per day plus 11 cents per mile
- MUSTANG II
\$10 per day plus 10 cents per mile
- MAVERICK
\$9 per day plus 9 cents per mile
- PINTO
\$8 per day plus 8 cents per mile



Miller-McVeigh Ford, Inc.
(on Rt. 322, just north of State College)
238-5041

It's our annual
HOLIDAY
Sale

Save on gift books!
Now thru Dec. 24th

UNIVERSITY BOOK CENTRE

238-0524 200 E. College Avenue

COOKBOOKS
CULTURE
HISTORY
GIBRAN
ME
NATURE
SPORTS