

Old Main, Lion remain favorite tourist attractions

By STEVE OSTROSKY
Collegian Staff Writer

Despite popular opinion, there is more to do at Penn State than just attend classes, study and go to parties. The University campus contains many tourist attractions for students, parents and visitors.

Old Main is the headquarters of much of the University's administration. Located there are University President John W. Oswald's office, the Student Affairs office which soon will move to Boucke, the Alumni Association office and many other administrative departments.

In front of old Main Stands a work of metal sculpture known as the "turtle," a favorite spot for photographers.

The original Old Main, built on the present site between 1856 and 1863, for many years was the entire University campus. It was rebuilt in 1929-30 and was the Student Union Center until 1955.

Located on Pollock Road, Old Main is open from 8 a. m. to 5 p. m. Monday through Friday.

The Hetzel Union Building, commonly known as the HUB, is the center of student life. Opened in 1955, it contains many services for students and visitors.

The Lion's Den, a snack bar, and the Terrace Room, a cafeteria, are located on the HUB ground floor. Also located there are recreation facilities including pinball machines, pool tables and ping-pong tables.

On the first floor are several lounge areas, a television room and the main desk, where newspapers and various publications are available.

Various student organizations have offices in the HUB. The Undergraduate Student Government, the Organization of Town Independent Students, the Association of Residence Halls Students and other organizations occupy offices in the HUB.

One of the University's most famous attractions is the Nittany Lion, the athletic symbol of the University. Donated in 1942 by the Class of 1940, the statue was carved by Heinz Warneke. It is located behind the parking lot at Rec Hall.

Speaking of the Nittany Lion, the home of the Nittany Lions is Beaver Stadium. Penn State home football games are held in this all-steel superstructure with a seating capacity of 57,538.

The stadium was moved to its present location in 1960 from Curtin Road, where Kern, Chambers and other buildings now stand.

The museum of the College of Earth and Mineral Sciences is located in Mineral Industries on Pollock Road. Various gemstones and other mineral art forms are displayed in the first-floor mineral industries art gallery. Included is a case of replicas of world-famous diamonds.

A meteorite display is located in the main corridor on the first floor. The Pennsylvania Room contains displays of various Pennsylvania minerals.

An exhibit of shrunken heads from Ecuador is located in a first-floor side corridor. Along with that exhibit, a display of fossil dinosaur bones and skulls of ancient man are located there. At the far end of the corridor, a right rear leg of the saurpod dinosaur Diplodocus is on display.

The Museum is open 9 a. m. to 5 p. m. daily.

The University Creamery salesroom is a favorite spot of students and visitors. Located on Curtin Road next to Borland Laboratory, the Creamery sells University-produced milk, ice cream and other products, especially dairy products. A lunch room and terrace also are located there.

The Creamery is open 7:30 a. m. to 5:30 p. m. Monday through Saturday and 10 a. m. to 4:30 p. m. on Sunday.

West of the Creamery is the Museum of Art. Galleries for special exhibits and displays occupy three floors of the museum, which also contains a gallery for student exhibits. The museum is open from noon to 5 p. m. daily except Monday.

Farther down Curtin Road is Pattee library. Within the library are various exhibits and collections in addition to books for circulation.

The library collection moved to Pattee in 1940 from earlier locations in Carnegie and Old Main. The Undergraduate Library, periodicals and special collections are housed in West Pattee. Central Pattee contains additional exhibits, a study area and the circulation department.

East Pattee is the library's newest addition. Completed in 1972, it contains the reference department, specialized libraries, administrative offices and the microfilm department.

The area stretching from Pattee to College Avenue is known as the Mall. A haven for squirrels and chipmunks, the Mall is also a common gathering place for students and faculty.

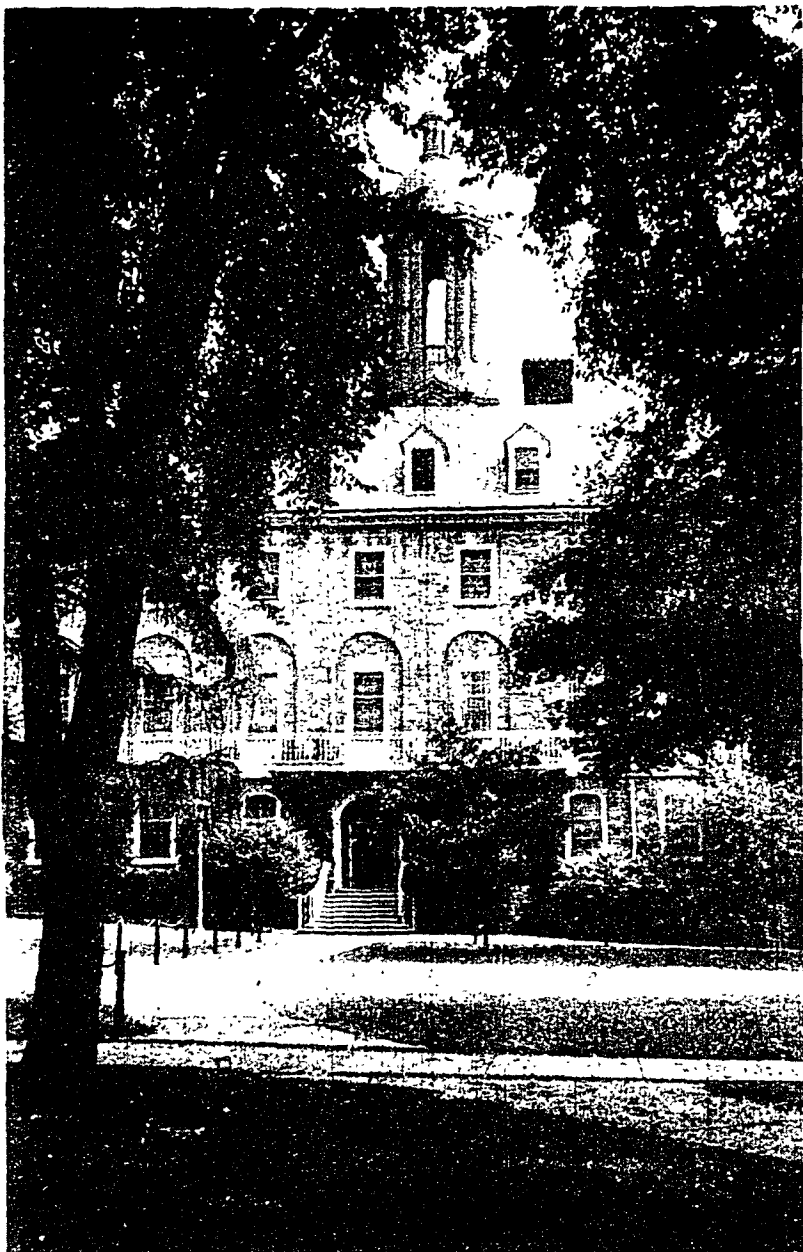
Rec Hall, located in the northwestern corner of the campus, is the headquarters for much of the University's athletic activities.

The main section, built in 1929, has two gym areas, basketball courts, bowling alleys, locker rooms and many offices, including the athletic ticket office and the office of the University's head football coach, Joe Paterno.

Other additions have been made, including bowling alleys and squash and handball courts.



Nittany Lion Statue



Old Main



Coal Buddha in the Museum of the College of Earth and Mineral Sciences.



Nittany Lion Inn



Obelisk

Photos by
Randy J. Woodbury



Aaaaaaaah!
Visitors enjoy cones from the University Creamery.