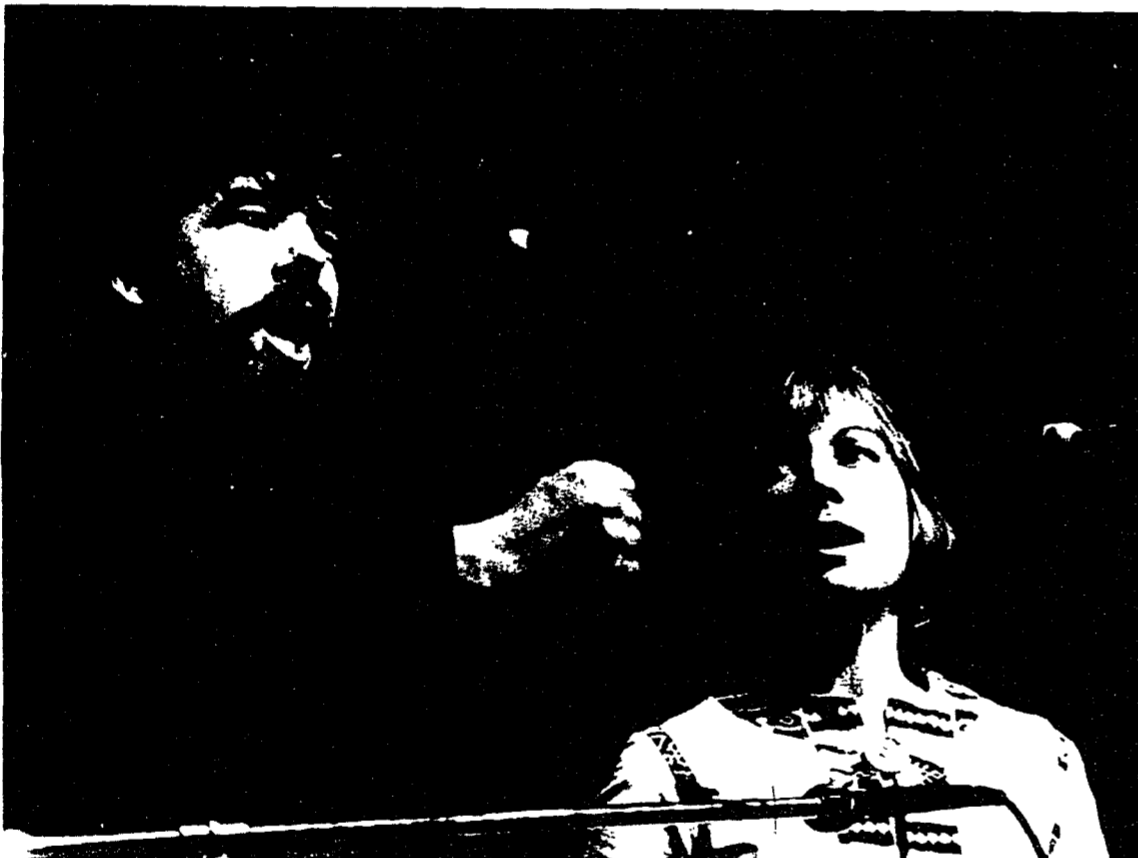


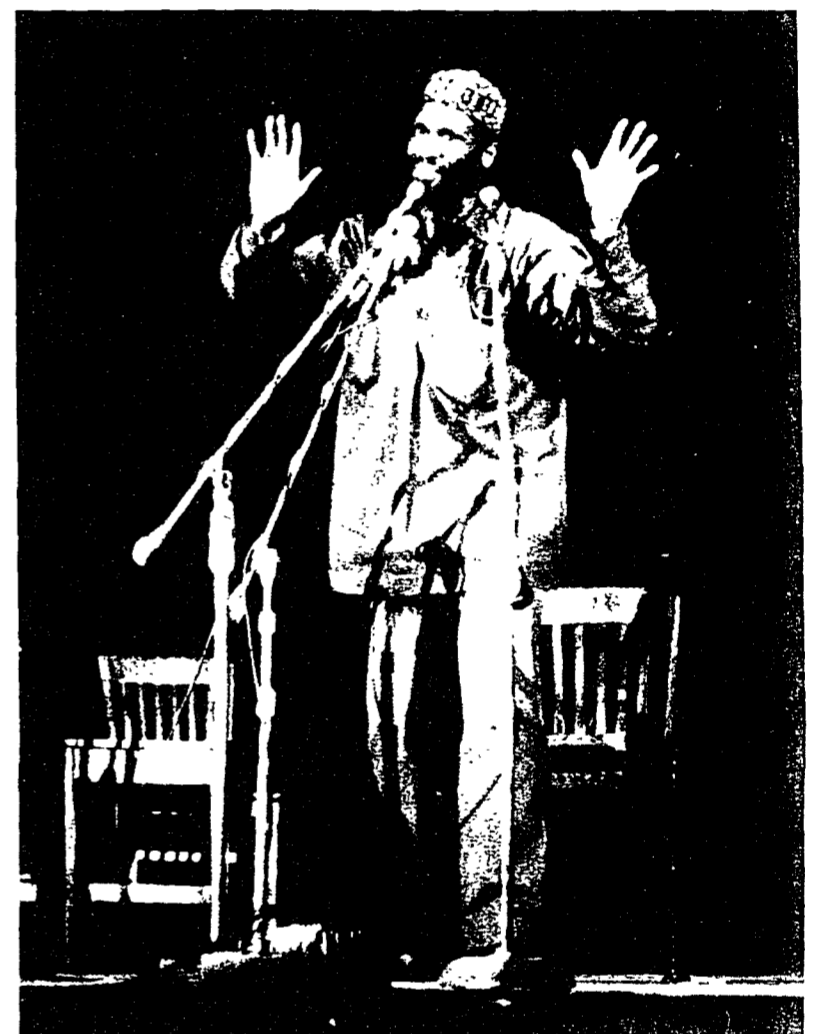


Festival for all folks



Country sounds, both European and American, floated 'round campus as part of this weekend's folk festival.

Music makers include (clockwise) Peter Knight, of Steeleye Span; John Jackson; Taj Mahal; and Lou and Sally Killen.



Photos by J.D. Donovan, David Wexler and Randy J. Woodbury

Together we lose at Elaine Powers.



One is a lonely number when it comes to shaping up. Sure, at Elaine Powers, you get all those terrific machines. But you get something more...personal attention, and lots of it...every inch of the way. AND our own "Team Time."

When we team up and trim down together. For fun. Sometimes for prizes and parties. Our total program works. If it didn't, we wouldn't be the world's biggest and best known name in figure control. Call today for your free figure analysis. Then join our losing team.

When a body needs a friend. Elaine Powers Figure Salons	At a price any body can afford. Now only \$10 per month. Complete 2-month program. Unlimited visits. <small>No interest. No annual percentage rate.</small>	If you are a dress size: 14...you can be a size 10 in 31 days 16...you can be a size 12 in 36 days 18...you can be a size 14 in 36 days 20...you can be a size 14 in 50 days 22...you can be a size 16 in 51 days If for any reason you fail to achieve these results, Elaine Powers will give you 6 months free!
---	---	---

NEW HOURS:

Mon - Thurs 9 am - 10 pm Fri 9 a.m. - 9 p.m. Sat. 9 a.m. - 4 p.m.

Eight-Track-Tapes

Pre-recorded Factory-sealed

Rock - Folk - Soul - C & W

\$2.75/Tape

call 237-2897 after 6 p.m.

**BE WISE...
TAKE YOUR DIAMONDS
TO CRABTREES**



Due to the great response last year to this offer, we will need 4 working days to properly handle your gems. Estimates freely given on any necessary repairs.

Crabtrees Jewelers

one three two south allen street
registered american gem society
one hour free parking in the pugh street garage

UNIVERSITY CALENDAR

Monday, April 16, 1973

SPECIAL EVENTS

Poetry reading by Thomas Kinsella, Irish poet, 8 p.m., Room 101 Kern. Sharon L. Hoffman, Flute recital, 8:30 p.m., Music Bldg. recital hall.

INTEREST GROUPS

Alpha Phi Omega, men's service, 7 p.m., Room 267 Willard.
Archery Club, 5-7 p.m., Room 3 White.
Bridge Club, 6:45 p.m., HUB game room.
Circle K International, 7:30 p.m.
Divine Light Mission, 7:30 p.m., Wesley Foundation.
Free-U, 7 p.m., Room 203 HUB.
HOPS, business meeting, 8 p.m., Room 107 Sackett.
PSOC Eco-Action, 8:30 p.m., Room 251 Willard.
Squash Club, 7 p.m., White Courts.
Color Slide Club, 7:30 p.m., Room 112 Kern. Competition, open to members.
Eco-Action, 7:30 p.m., Room 105 Forum. Film.
Homophiles of Penn State, 8 p.m., Room 107 Sackett.

MEETINGS

OTIS, 6:30 p.m., Room 203 HUB.
College of Science Student Council, 6:30 p.m., Room 310 Whitmore.

OFFICIAL

File for Pass-Fail. File Repeat Course forms. Last day for June Grad to pay thesis fees and activate diploma card.

EXHIBITS

Museum of Art — Gallery A, watercolors by Neil Di Teresa, Berea, Ky. Gallery B, acrylic and watercolor paintings by Robert Natkin and Judith Dolnick, New York. Zoller Gallery, Visual Arts — the Printmakers Show, featuring intaglios by Kenneth A. Kerslake and woodcut prints by Robert C. Skelley, University of Florida.
HUB Gallery — Posters from the University's permanent collection.
Walnut Building — Paintings by students Frank Tillman and Robert Wells.
Pattee Library, Main Lobby — "Birds of Pennsylvania," book by Merrill Wood, Biology; original pen and ink drawings by Dorothy Bordner, Math. "Moliere," a series of panels of life and works on loan from the French Embassy for the 300th Anniversary. "Spring at Penn State," color photos by Wendell Mac Rae.
Pattee Library, Circulation Lobby — Four Black Artists — Paintings.
Pattee Library, Rare Books Room — "Seventh Century France in Maps, Prints and Books."
Kern Gallery — Frank Thornbill, seascapes.