

Softbailers out to top 2-6 mark

The women's softball team begins practice this week with high hopes of improving last season's dismal record. The Lady Lions were 2-6 last year, and will try to better that mark under interim coach Jackie Hudson. Hudson is serving as mentor this season while regular coach Pat McTarsney pur-

sues graduate studies. Only seven veterans return along with the annual influx of new talent. Returnees include juniors Gayle Stravinsky and Nancy Beener, along with seniors Betsy Byrnes and Pam Shuster. Beener played second base last year, and Shuster played at first, while Stravinsky and

Barb Snell, a regular last season at shortstop, attended late winter practice but may forgo participation this spring. Stravinsky is a big hitter, and along with Shuster and McGee, two of the squad's better batters last year, will provide the principal offensive punch this year. The women play an eight

1973 women's outlook

Byrnes lend experience to the pitching staff. Lyn McGee, who held down the third base job last year, also returns along with outfielder Diane Klimas.

game slate, including four contests at home. The soft-bailers open on April 17 against Wilson College at Chambersburg, Pa., before returning home for three

straight contests. All home games are played on the field in front of the HUB. Ithaca, Brockport and West Chester figure to be the toughest opponents as all three beat Penn State handily last year. The squad held several weeks of official practice at the end of last term, and have been holding makeshift workouts this past week. Tryouts will be held this week to trim the team down to the 25 player limit.

The schedule: April 17, at Wilson College; April 21, State University College of New York at Brockport; April 24, Ithaca College; April 28, Lock Haven State; May 3, at Indiana (Pa.); May 8, West Chester State; May 10, at Lock Haven State; May 12, at State University College of New York at Cortland.

—Steve Reitzel

'Strange' lacrossers rebuilding

Women's lacrosse, a strange game. There are no protective paddings worn by the players, no timeouts, no substitutes. And, other than those imposed by nature or the fencing contractors, there are no boundaries. As no contact is permitted, the goalie is the only player who needs any padding, of course. And substitutions and timeouts are permitted, but only for injuries. As for the boundaries, well, if there's nothing in the way, the girls can run for ever.

Penn State's team will be running through an eight-match season this spring, the ultimate goal for the players being selection to the U.S. Women's Lacrosse Association sectional team. Coach Ellen Perry has a

number of returnees, including three of the four who qualified for the sectional team last year — Peg Barto, Gwen Kranzley and Helen Chang. The fourth, Barb Doran, is in Italy this term. After a 4-4 season last year, Perry is hopeful of improvement but the loss of several key personnel tend to

"We should do well, judging by the first look," Perry said, "but heaven only knows what they'll do in competition." Five are virtually assured of positions right now: Kranzley, who will play at the "home" position; Barto and Julie Soriero, who will go either at wing attack or wing defense positions; and Chang

Clopper, Lynn Watkins and Chris Kassab. What all of them, and the others, will be aiming for is that berth on the USWLA sectional team, which they must gain in competition with all qualified women athletes, not just collegians. The late May-early June competition will come after selections are made for the Southern Association (Baltimore area) team for which the Penn State women must qualify.

In the meantime, of course, there is a full regular season schedule which is preceded by a scrimmage with Slippery Rock this Saturday. Maryland, Frostburg (Md.) State, Lock Haven and Ithaca should be the toughest on the schedule, Perry said.

"The others SHOULD be easy enough for us," she laughed, "but you never know. I think, though, that the girls we have this year should make things tough for some people."

The schedule: April 14, at Maryland; April 21, at Hartwick; April 24, Ithaca; April 26, at Frostburg (Md.) State College; May 2, at Millersville; May 5, Cornell; May 8, at Wilson (Pa.) College; May 12, Lock Haven. —Ray McAllister

1973 women's outlook

dampen things somewhat. Very little is set right now and Perry is looking to four or five freshmen for some help this year. Their performances, together with those of the other inexperienced squad members, could well key the whole season.

and Faye High, each of whom probably will play line defense positions.

The other 12 positions, then, still are open but Perry does name several who might have inside tracks right now: Robin Frysinger, Nikki Rainey, Pam Hall, Robin Beyerle, Anne Findley, Terri

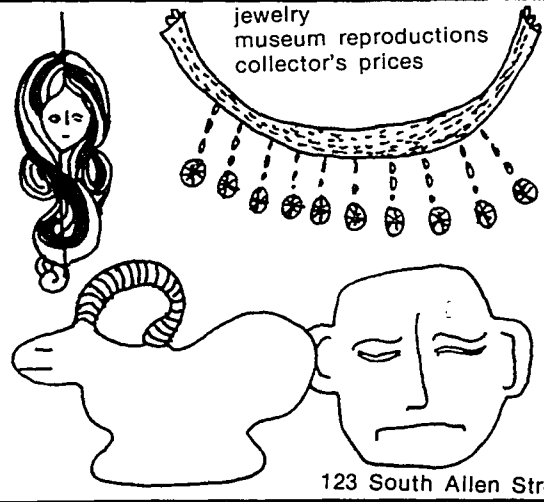
COMMONSPLACE
THEATRE
presents

April 4
8 & 10 pm

The Tough Guys
Edward G. Robinson
& Humphrey Bogart

in
BROTHER ORCHID

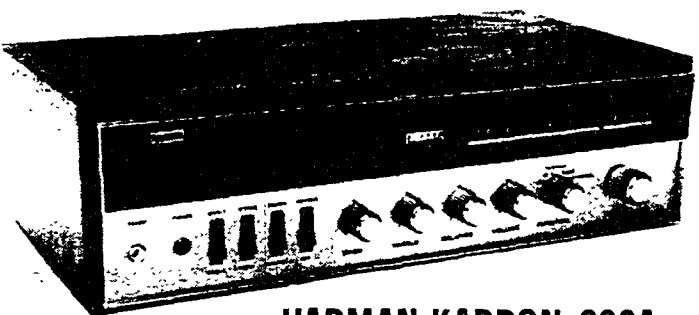
MODE



123 South Allen Street

THE PERFORMERS

harman kardon
We want you to hear more music



HARMAN-KARDON 230A
45 WATT AM/FM STEREO
SOLID STATE FM RECEIVER

The Harman-Kardon engineering team has completed a high performance stereo receiver which exceeds every specification ever established for medium priced stereo components. The new Model 230A combines the finest stereophonic sound with the industry's most distinctive styling to give high fidelity a new standard of excellence.

The 230A adheres to the same philosophy of design that makes all Harman-Kardon receivers sound more transparent and life like. Frequency response, which is usually limited to

the narrow range in most receivers, is extended well beyond those parameters to give the sound you hear greater clarity and recognition.

Tuner sensitivity of the 230A is extraordinary. It pulls in distant stations without noise or fading. AM and FM performance never deteriorates with age because the receiver produces no heat to change the value of component parts.

179.95



HARMAN-KARDON 930
TWIN POWERED AM/FM STEREO
FM SOLID STATE RECEIVER

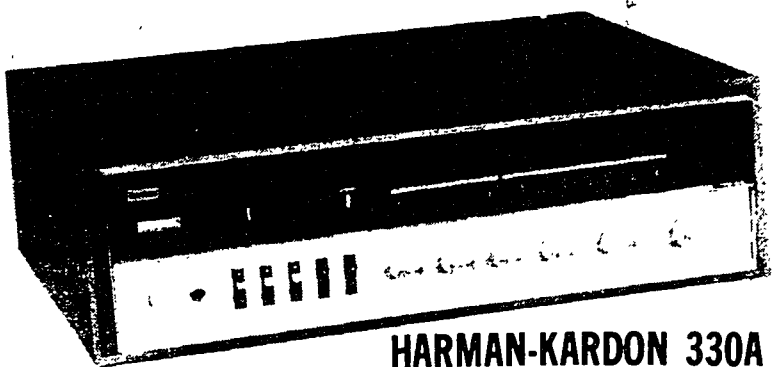
Following years of research and development, the Harman-Kardon Citation Engineering group introduced a preamplifier, amplifier and a new omnidirectional speaker system.

Results were electrifying. Response of the audiophile magazines, reviewers and music lovers throughout the world was immediate and unprecedented. In the words of one reviewer, Citation equipment stands as "the culmination of a

purist's dream."

Now ... Harman-Kardon has incorporated the inspiration, talent, and engineering skill which produced Citation into a new and superb receiver: the Harman-Kardon 930. We say with full confidence that the Harman-Kardon 930 creates new standards for the entire industry to emulate.

479.95



HARMAN-KARDON 330A
100 WATT AM/FM/STEREO FM
SOLID STATE RECEIVER

The Harman-Kardon 330A is an updated version of the world's largest selling receiver, the 330. It provides increased power, sensitivity and ultra-wideband sound without an increase in price! The superior sound of the 330A is a direct result of its wideband design. Some manufacturers clip off the high and low frequencies beyond 20 and 20,000 Hz. Careful listening tests reveal that the clipping produces distortion in the audible frequencies which mutes the sound. The 330A faithfully reproduces frequencies well beyond the usually accepted limits of

human hearing to give extra realism to the sound you can hear. That's why the 330A's sound is cleaner, more transparent, more sharply defined. You can hear, and feel the difference. The 330A delivers a degree of excellence never before attainable at such modest cost. Only Harman-Kardon, leader in solid state engineering and styling, could develop the 330A — high fidelity that looks as magnificent as it sounds.

239.95



HARMAN-KARDON 630
TWIN POWERED AM/FM STEREO
FM SOLID-STATE RECEIVER

Harman-Kardon introduces the 630 Twin Powered Receiver — the first high performance stereo receiver in the medium price field. It's been a long time coming ... and the music lover is certain to be enthusiastic over its superior performance and features.

Just connect this superb instrument with the finest speakers and turntable

for a critical listening test. Listen. The "veil" that is often present in medium price receivers is gone! Sound quality is crystal clear and totally transparent. You can now pick out individual instruments due to the sharp, clear transients and rapid recovery time.

359.95

TRADEWINDS IMPORTS

Hand-Carved Book Holders
now open 105 S. Allen St.

Spaghetti Dinner

with meat sauce & bread only \$1.00
Chili - 50c a bowl
noon to 8 p.m.

Village Inn 1767 N. Atherton

SPRING TERM RUSH!

Why not rush fraternities this spring?

Rush this term is more relaxed, and you'll get a better chance to see the houses. We bet you like what you see.

Fraternity rush -

203 E Hub or phone 865-3455



cork

1'x3'x1/2" inch
\$1.00
2'x3'x1" inch
\$4.00

sofa & chair

127 e. beaver
237-6612



Hi Kids,
here's the
latest
festival
news!

Festival people
first meeting -
WED. Apr. 4
Newcomers
interested in:

medical work for
Festival - contact
Free U office,
being a marshall -
meeting - Apr. 17,
or exhibiting and
selling arts and
crafts - call 5-3204

Meetings
S-205
Human
Develop
ment
South

EUNUCH STUDIOS



HIGH-FIDELITY
HOUSE

101 HEISTER ST.

