

First Annual Orchid Show To Exhibit Floral Culture

The First Annual Orchid Show, sponsored by the Central Pennsylvania Orchid Society in cooperation with the University, will be held at the Conference Center March 12-14.

The show will be open to faculty, students and the general public on March 13, from 10:30 a.m.-9 p.m., and on Sunday, March 14, from 10 a.m.-5 p.m.

Flowering orchid plants from the University green-

houses as well as those of amateur and professional growers in the central Pennsylvania area will be exhibited.

There will also be exhibits of orchid prints, paintings, and photographs; of orchid culture, including potting and growing procedures; and of examples of the florists' art using orchids.

Any person complying with the following rules of the show may exhibit: all entries must

be ready for judging by 8 a.m., Saturday, March 13; exhibitors must stage their own exhibits, and may set them up between 3 p.m. and 9 p.m. Friday, March 12; all plants entered in competitive classes must have been in the entrant's possession for at least one month prior to March 12; all plants entered should be labeled as to name and cross. There are no entry fees for exhibitors and no admission fee for the public.

Judging of the exhibits will be done by official American Orchid Society judges, except in special open classes 24 and 27, which will be judged by qualified floral judges. No exhibitors will be permitted in the show area while judging is in progress. The judging will take place Saturday, March 13, from 8 a.m.-10 a.m. Show winners will receive the following awards:

- Best Plant in Show—Trophy
- Best Plant Grown by an Amateur—Plaque
- Best Display (Amateur Class)—Trophy
- Best Educational Exhibit—Plaque
- Best Orchid Society Exhibit—Trophy

Million Dollar Structure

Spring May Bring Church Completion

By ANN WORRALL

The Rev. Dale S. Bringman has predicted that the new Grace Lutheran Church will reach completion shortly after Easter of this year. Plans for the million-dollar stone structure which have been in the making during Bringman's eight years as pastor in State College, were only realized in December 1963 when construction was begun at 400 Beaver Ave.

Bringman praised the new site as being in a more central location to the campus and as providing more extensive parking facilities. The present Grace Lutheran Church is located at College Avenue and Atherton Street.

The architecture, contemporary in form, was designed by Harold E. Wagoner of Philadelphia. In the new church, Wagoner has attempted to portray an open sweeping movement and a fluidity of shape suggestive of something "not so much built, as sculptured, made by hand."

The worship sanctuary, which seats 800, is a circular room so designed that the 133 stained glass windows will cast their colors over its white interior on a sunny day. A unique feature here is the free-standing altar.

In the domed ceiling, as in a planetarium, tiny spotlights are arranged pinpointing the constellations seen on Christmas Eve in this latitude.

A copy of French sculpture Rodin's "The Down-thrust Hand" and an ancient symbol of God reaching out to man, will appear in one of the east windows.

Multi-roomed

The many-room structure includes a kitchen which opens out into a fellowship hall, complete with stage and lighting system for dramatic productions, a fireside room, a concrete ramp for attendants confined to wheelchairs and a soundproof room for weekly Sunday broadcasts on WRSC.

Catering particularly to the students are lounges, a kitchenette and study rooms. The Lutheran Church sponsors both an on and off-campus ministry.

When questioned as to the contemporary form and the open sweeping design, Bringman emphasized the fact that each worshiper should find his own meaning. However, in a sermon prepared for delivery on November 15, 1964, he noted three interpretations of the design, "the alwayness of the Almighty, the realness of the community."

Fund Drive

Funds for the new church were provided by the local congregation numbering about 1,130 mem-

Interviewers For Marines Now in HUB

The Marine Corps Officer Selection Team from Pittsburgh will be at the Hetzel Union Building until Friday.

The team is interviewing students who are interested in receiving a commission in the U.S. Marine Corps.

Programs for seniors and recent graduates are the Officers Candidate Course and the Aviation Officer Candidate Course which requires successful completion of a 10-week training period after graduation and leads to a commission.

The Women Officer Candidate Course is a program available for junior, senior and graduate women.

All preliminary training is conducted at Quantico, Va. After graduation, for those who qualify, aviation training is conducted at Pensacola, Fla. This leads to the "Wings of Gold" and the designation of Naval Aviator for the Marine officer.

There are several programs available, according to Captain Robert Stauffer, officer in charge of the team. Programs for undergraduates are Platoon Leaders Class (Ground) and Platoon Leaders Class (Aviation). The programs have two six-week training periods which lead to a commission upon graduation.

HUB Committee To Discuss Trip

The Hetzel Union Building Travel Committee is again working to sponsor a trip to New York City.

This time the purpose will be to see the Broadway musical, "Golden Boy," starring Sammy Davis, Jr.

Robert Katzenstein, committee chairman, said the trip has been scheduled for the weekend of April 2-4. Further details of the event will be discussed at a meeting today at 7 p.m. in 214 Boucke.

Programs for seniors and recent graduates are the Officers Candidate Course and the Aviation Officer Candidate Course which requires successful completion of a 10-week training period after graduation and leads to a commission.

The Women Officer Candidate Course is a program available for junior, senior and graduate women.

All preliminary training is conducted at Quantico, Va. After graduation, for those who qualify, aviation training is conducted at Pensacola, Fla. This leads to the "Wings of Gold" and the designation of Naval Aviator for the Marine officer.

CENTURION

Our Company is celebrating its 100th year in the life insurance business. Age alone is no criterion of maturity, of course. But if you check into our experience and examine our reputation, you'll see why we're proud of the record.

We rank in the top 2% of all life companies in the United States in assets, but growth means much more to our company than just being big. Among other things, it means responsibility to our clients and policyowners, providing insurance that can be tailored to their ever-changing needs, and prompt, personal service.

An integral part of the company's growth is its training program, which has the reputation of being one of the finest in the business. For college students, we have a Campus Internship Program to start their training—and income—while they're still at school.

It could pay you to inquire.

Robert A. Szezyler
Campus Supervisor
103 E. Beaver Ave.
AD 8-0544 State College

PROVIDENT MUTUAL LIFE
INSURANCE COMPANY OF PHILADELPHIA

SCHOLARSHIP

Delta Delta Delta is presenting a \$100 scholarship for the fall term 1965 to any girl who is eligible.

Applications can be obtained at the Office of Student Aid in Willard Building and must be completed and returned by May 3, 1965.

S.C.A.I.A. — S.S.L.A. — S.S.A.E

present the

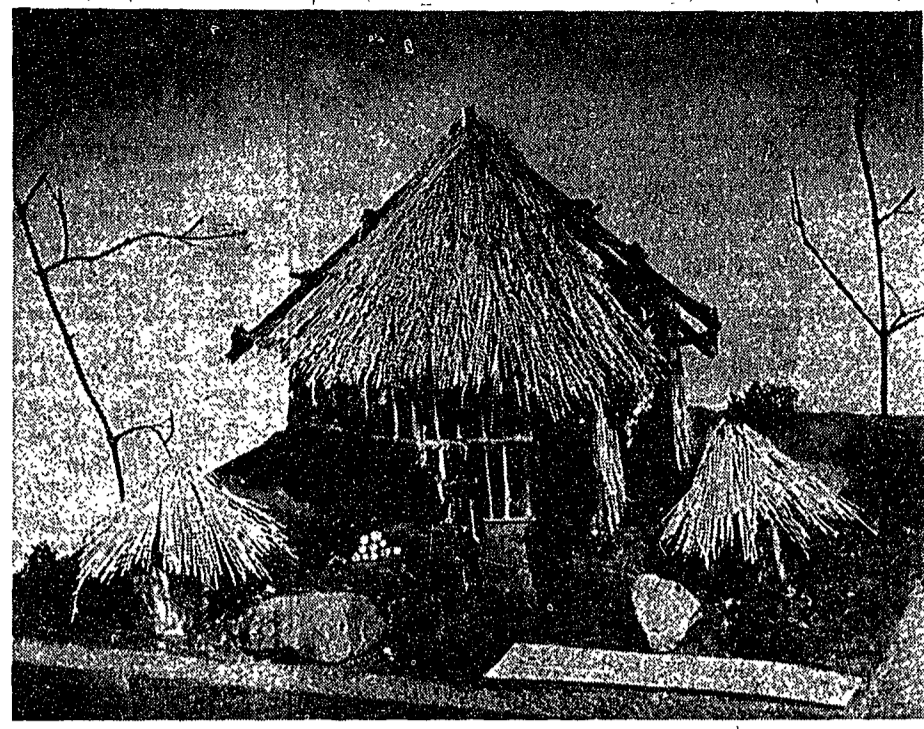
Traditional and Exciting BEAUX ARTS BALL

Costume Theme—**Hysterical History**

Friday March 5 8 p.m.

Woodman Hall 112 W. Hamilton

Tickets at 3rd Floor Sackelt



Primitive Shelters on Display

Forty-five models representing types of shelters developed by primitive cultures throughout the world are on exhibition through March 10 in the Engineering Exhibition Hall of Hammond.

These models were developed by architectural engineering students as part of

work in Architecture 24—basic design—under the direction of Robert J. Napier, assistant professor of architecture, and William S. Semple, visiting critic from Texas.

The study is intended to help beginning students realize that principles of observable structural behaviors were established long ago,

and techniques in nature of materials and their geometry were developed to solve the problems of spanning space. Reproductions of these models, along with accompanying diagrams and analyses, are planned for a publication to be jointly sponsored by the architecture and architectural engineering departments.

English Instructors Plan 6-Week Summer Institute

Forty high school English teachers will take part in a special six-week institute at the University this summer as part of a nationwide program.

This program is attempting to raise the competence of these English teachers by offering them, as the formal course work of the Institute, three concurrent courses in composition, language and literature.

Specialists from the English faculty will conduct the courses. The Institute has been certified for six semester hours of credit at either the graduate or undergraduate level.

The Institute will be held from June 28 - Aug. 7 under the sponsorship of the U.S. Office of Education. Each of the 40 participating English teachers will receive a stipend of \$75 a week plus \$15 weekly for each dependent.

Members of the Penn State faculty served on the national working staff which organized the first institutes and provided the impetus for the present program.

The Institute is open to any high school teacher experienced in teaching English in grades nine through 12 within the geographical limits of the United States.

North Council Will Sponsor Prexy Dinner

North Halls Men's Residence Council will sponsor a special Presidential Dinner at 5:15 to 8:15 in Warnock dining hall. Guests of honor will be President and Mrs. Eric A. Walker.

The President and his wife will join area students in their regular dining hall procedures and the normal dining hall meal.

President and Mrs. Walker will be joined at their guest table by area administrators and several students.

An informal reception will follow the dinner, when the President will be available to talk and meet with students from the English of the College Entrance

Examination Board.

The first series served as pilot programs for nationwide institutes made possible by the amended National Defense Education Act, which provides a grant of \$46,539 to the University for the Institute.

No tuition or fees will be charged, but participants must pay housing and food costs from their stipend. They will live in university residence halls to assure their maximum participation.

This summer's institute will be the second held by the University. The University took part in the first series of English institutes, sponsored by the Commission on English of the College Entrance

INTERNATIONAL STUDENT ID CARD

for discounts in USA and 28 countries. STUDENT SHIPS to Europe, CHARTER FLIGHTS within Europe.

Write: Dept. CP
U.S. National Student Association
265 Madison Ave. New York, N.Y. 10016

JOBS IN GERMANY-SWITZERLAND 1965

EARN EXPENSES — SEE EUROPE

ROUND TRIP JET OR STUDENT SHIP - JET RETURN

Make Inquiry at once
Jobs Limited

DEADLINE MARCH 15

Jenn State Travel
116 W. COLLEGE AVE. 238-0528

Conflict Exams For Finals Period

The courses listed below are those in which conflict examinations have been established during the final exam period for the Winter Term 1965, (Thursday, March 18, Friday, March 19, and Saturday, March 20). Department heads and instructors have been informed of the names of those students authorized to take conflict exams.

Students who filed requests for conflict examinations may obtain a copy of their revised final examination schedule at the Scheduling Office, 2 Willard. If an instructor does not receive notification that a student has been assigned to a conflict exam, this copy of the conflict request may be used to certify that the request has been authorized.

Internship Established In Dietetics

To help meet the pressing need for dietitians in Pennsylvania's state-owned institutions, an administrative dietetic internship program has been established.

ANIMAL SCIENCE	422	By Appt
BIOCHEMISTRY	3	By Appt
BIOLOGICAL SCIENCE	1	Mar 19 6 213 B L
BOTANY	2	Mar 19 2 1 Sparks
CERAMIC TECHNOLOGY	121	By Appt
CHEMISTRY	11	By Appt
CHEMISTRY	457	Mar 18 5 204 F L
CLOTHING AND TEXTILES	301	By Appt
ECONOMICS	14.4	By Appt
ELECTRICAL ENGINEERING	415	Mar 18 6 208 Boucke
ENGINEERING	41	Mar 18 6 225 E E W
ENGINEERING MECHANICS	43	By Appt
ENGINEERING MECHANICS	470	Mar 18 2 202 E E W
ENGLISH	408	By Appt
ENGLISH	410	By Appt
ENGLISH	5	Mar 18 4 1 Sparks
ENGLISH	17	Mar 18 4 1 Sparks
ENGLISH	19	Mar 18 4 1 Sparks
HORTICULTURE	52	By Appt
INDUSTRIAL ENGINEERING	131	By Appt
INTERNATIONAL UNDERSTANDING	315.1	By Appt
MATHEMATICS	39	By Appt
MATHEMATICS	42	Mar 20 6 104 O L
MECHANICAL ENGINEERING	405	Mar 18 6 104 O L
MECHANICAL ENGINEERING	22	Mar 20 6 152 H B
METALLURGY	153	By Appt
METALLURGY	403	By Appt
METROLOGY	300.2	Mar 18 2 211 M E
PHYSICAL SCIENCE	300.2	Mar 18 2 211 M E
PHYSICS	284	By Appt
PHYSICS	285	Mar 18 6 103 O L
PLANT PATHOLOGY	457	By Appt
ZOOLOGY	422	By Appt
ZOOLOGY	450	By Appt

- BICYCLE -
PARTS
REPAIRS • ACCESSORIES
Western Auto
112 S. FRAZIER ST.

NEW COLLEGE DINER
Downtown Between the Movies
ALWAYS OPEN

Bus. Ad. Majors

If you are interested in working for B.A. Bulletin, your college magazine, in either a managerial or writing position call Ron Roman, editor, 238-2557 after 11:30 p.m., or Don Shapiro, business manager, 238-9308. Along with a position on the Bulletin Staff—you will also be appointed to the Business Student Council.

NOW \$1.00

If you need to earn

\$110 A WEEK OR MORE THIS SUMMER

remember this interview date **MARCH 8**

Good Humor world's largest ice cream specialties manufacturer will hold on-campus interviews on this date.

REGISTER NOW!

Your Summer Placement Director or Student Aid Officer will set up an interview schedule for you. If you're selected your job is reserved until school closes. And you may start work as early as April 1st.

EARNINGS ARE BIG WITH GOOD HUMOR

Of the students working six or more weeks' last Summer —

- 2 out of 3 earned \$110 or more a week
- 1 out of 2 earned \$118 or more a week
- 1 out of 4 earned \$133 or more a week

HOW TO QUALIFY FOR INTERVIEW

1. Minimum age, 18
2. Have a valid driver's license in State you'll be working, and be able to drive a "stick" transmission.
3. Pass a physical examination.

Equal Opportunity Employer

國三千里歌舞團

SPECIAL
SPECIAL RUNS ALL WEEK
JOE'S 1-Hour CLEANERS
Across from Atherton Hall

MEN'S or LADIES TOPCOATS - Reg. \$1.50
(WITH EXCEPTION OF TRENCH COATS)

Good news to you lotus-eaters and sabbatites... "The Lodge" is having Chinese food tonight. As always, our cook has done himself proud by producing the greatest Won Ton soup, Fried Rice, Chop Suey, Chow Mein, Sweet 'n Sour spareribs, Egg Rolls... and all the other staples of good Chinese food. (you can even set your fortune told... cheap)

The Nittany Lodge
113 Heister St.
238-8408